

160 Veranda Street  
 Portland, Maine 04103  
 T: 207.221.2240  
 F: 207.221.2246  
 Web: www.allied-eng.com



Owner

**PAYSON-SMITH HALL  
 CHEMISTRY LAB  
 RENOVATION**

96 Falmouth Street, Portland ME  
 04101

NO.	DESCRIPTION	DATE



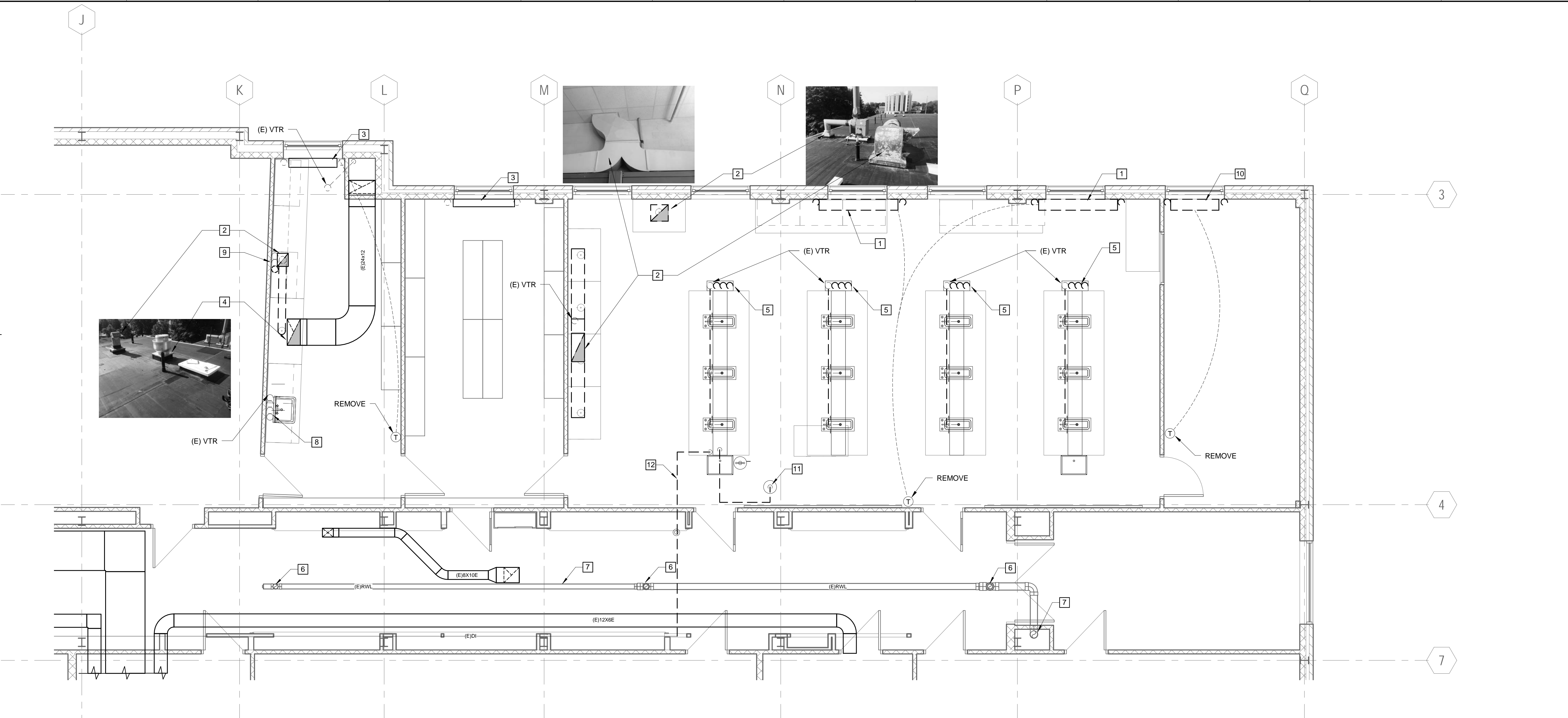
CONTENT: PLUMBING AND MECHANICAL FLOOR PLANS - DEMOLITION	
DRAWN BY:	SGH
PROJECT NO:	14-075-00
DATE:	01/09/2015
REVISED:	
SCALE:	AS NOTED
<b>PD1.0</b>	
Project Phase BID DOCUMENTS	
<small>COPYRIGHT © 2014 BY LAVALLEE BRENSINGER PROFESSIONAL ASSOCIATION. ALL RIGHTS RESERVED. NO REPRODUCTION WITHOUT PERMISSION.</small>	

**DEMOLITION NOTES:**

1. REMOVE UNIT VENTILATOR AND ASSOCIATED COMPONENTS, CAP STEAM AND CONDENSATE PIPING BELOW.
2. REMOVE HOOD AND ASSOCIATED PIPING AND DUCTWORK COMPLETE.
3. STEAM RADIATOR TO REMAIN.
4. EXISTING KITCHEN EXHAUST SYSTEM TO REMAIN.
5. REMOVE (E) V, (E)NG, (E)HW AND (E)CW PIPING IN LAB, (E) V PIPING 12" BELOW ROOF AND (E)VTR SHALL REMAIN FOR REUSE.
6. (E) ROOF DRAIN AND PIPING TO REMAIN.
7. (E) RWL TO REMAIN.
8. (E)HW, (E)CW, (E)NG AND (E)V TO REMAIN.
9. (E)CW, (E)NG AND (E)V TO REMAIN.
10. REMOVE STEAM RADIATOR AND ASSOCIATED COMPONENTS COMPLETE. CAP STEAM AND CONDENSATE PIPING BELOW.
11. REMOVE EMERGENCY EYEWASH AND ASSOCIATED COMPONENTS, REMOVE FLOOR DRAIN, PIPING TO BE REMAIN FOR REUSE.
12. REMOVE (E)D PIPING TO CORRIDOR.

**GENERAL NOTES:**

1. MODIFICATIONS TO PIPING SERVING PREP ROOM SHALL NOT BE PERFORMED ABOVE CLASSROOM 207 CEILING.
2. SEAL HOLES IN FLOOR WITH FIRESTOPPING.



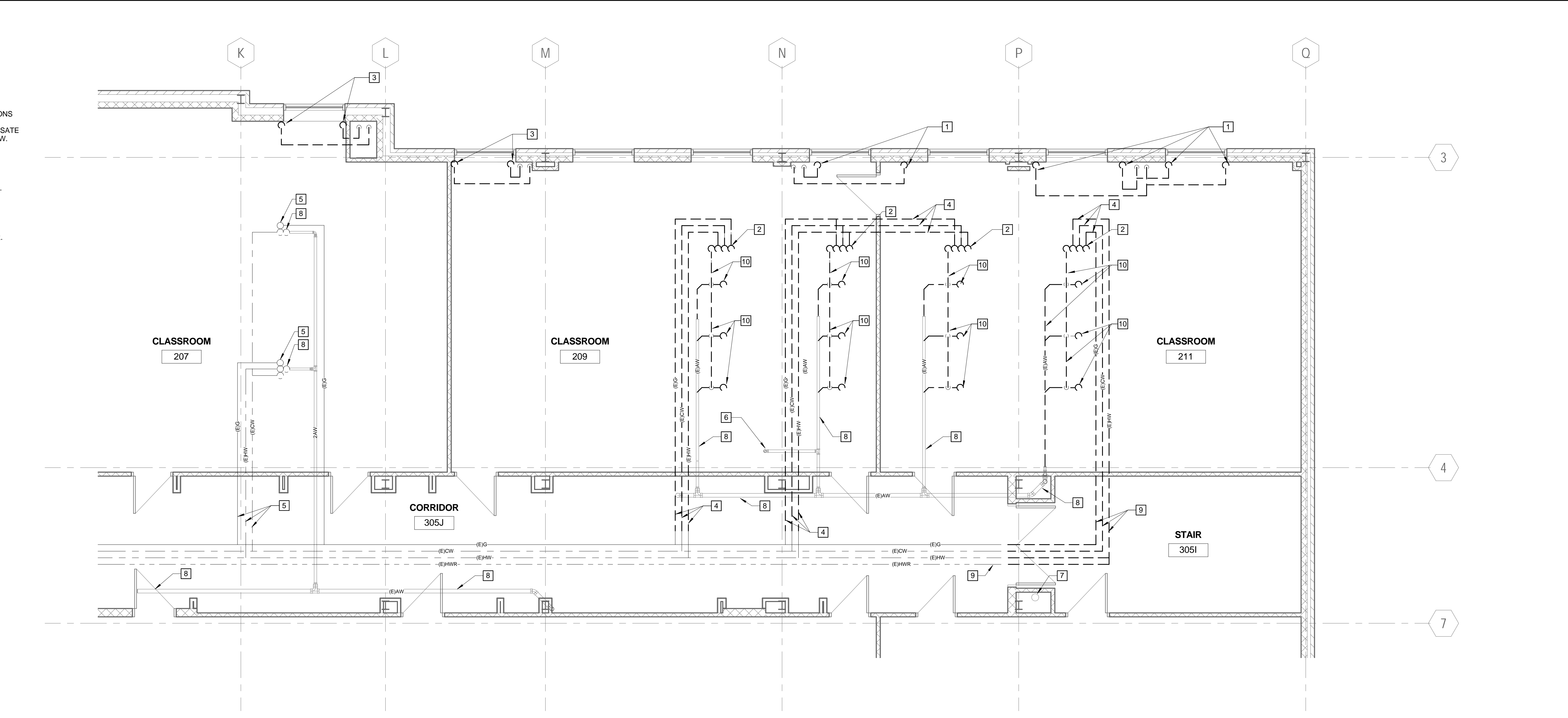
E1 THIRD FLOOR PLAN - PLUMBING AND HVAC DEMOLITION  
 1/4" = 1'-0"

**DEMOLITION NOTES:**

1. REMOVE STEAM AND CONDENSATE PIPING PENETRATIONS THROUGH THIRD FLOOR AND PIPING IN SECOND FLOOR CEILING CAVITY. CAP AND ABANDON STEAM AND CONDENSATE RISERS IN PLACE FOR CONTINUED USE ON FLOORS BELOW.
2. REMOVE (E)CW, (E)HW AND (E)NG PIPE PENETRATIONS THROUGH FLOOR.
3. STEAM PIPING TO REMAIN.
4. REMOVE (E)HW, (E)CW AND (E)NG PIPING BACK TO CORRIDOR.
5. (E)HW, (E)CW AND (E)NG PIPING TO REMAIN FOR REUSE.
6. REMOVE (E) FLOOR DRAIN, REUSE (E) PIPING.
7. (E)RWL DROP TO REMAIN.
8. (E)AW PIPING TO REMAIN.
9. (E)HW, (E)HW, (E)CW AND (E)NG IN CORRIDOR TO REMAIN. CUT AND REMOVE PIPING IN STAIRWAY.
10. REMOVE (E)AW PIPE PENETRATIONS THROUGH FLOOR. REMOVE (E)AWV AND (E)AW BACK TO MAINS.

**GENERAL NOTES:**

1. CLASSROOM 207 SHALL REMAIN UNDISTURBED DURING REMODEL OF SPACES ABOVE.
2. SEAL HOLES IN FLOOR WITH FIRESTOPPING.



J1 SECOND FLOOR PLAN - PLUMBING DEMOLITION  
 1/4" = 1'-0"

N:\Projects\2014\14-075 - USM Payson 405 Laboratory Renovation\001 Drawing\14-075\2014.dwg  
 1/8/2015 9:03:24 AM