

Owner

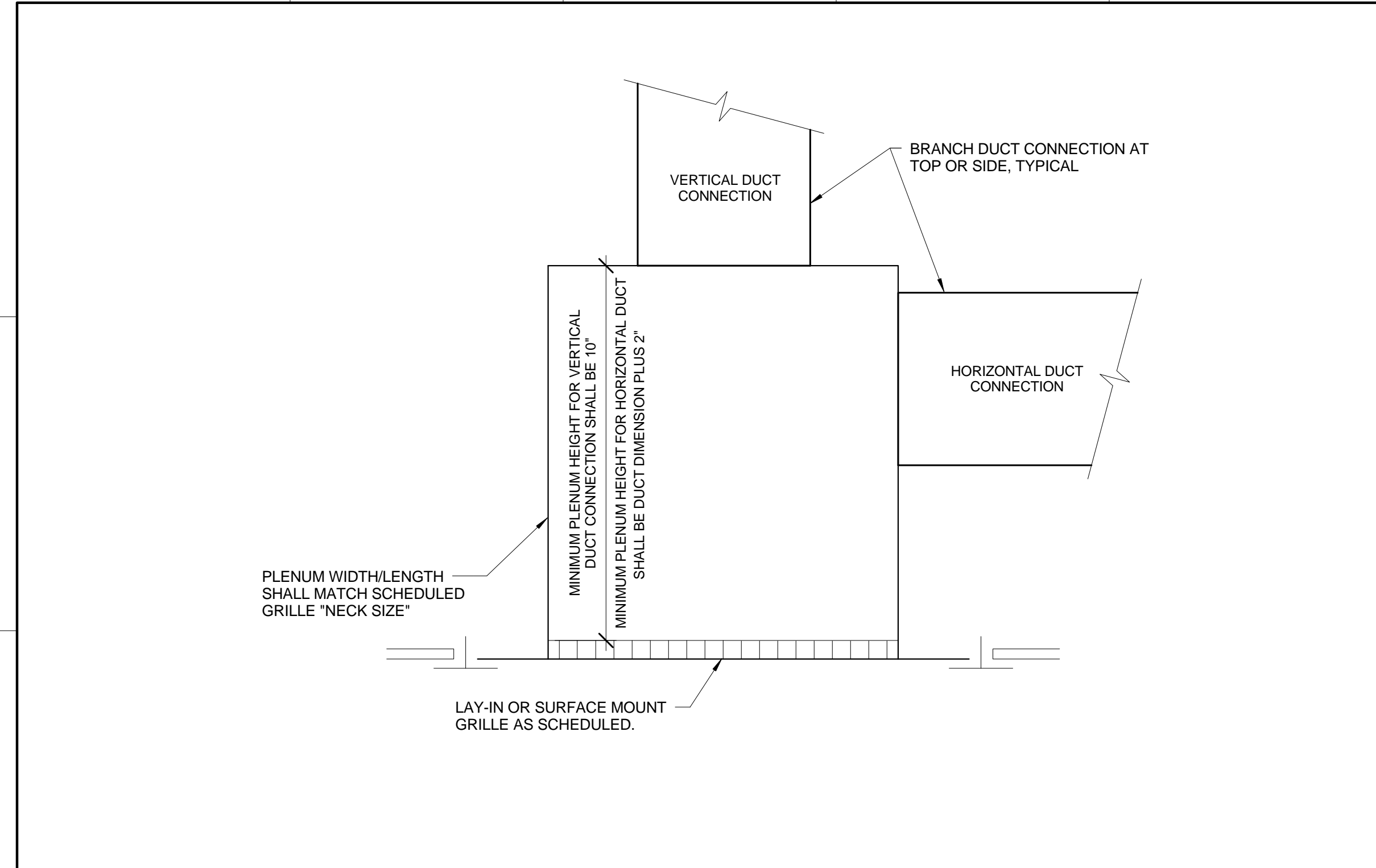
**PAYSON-SMITH HALL
CHEMISTRY LAB
RENOVATION**

96 Falmouth Street, Portland ME
04101

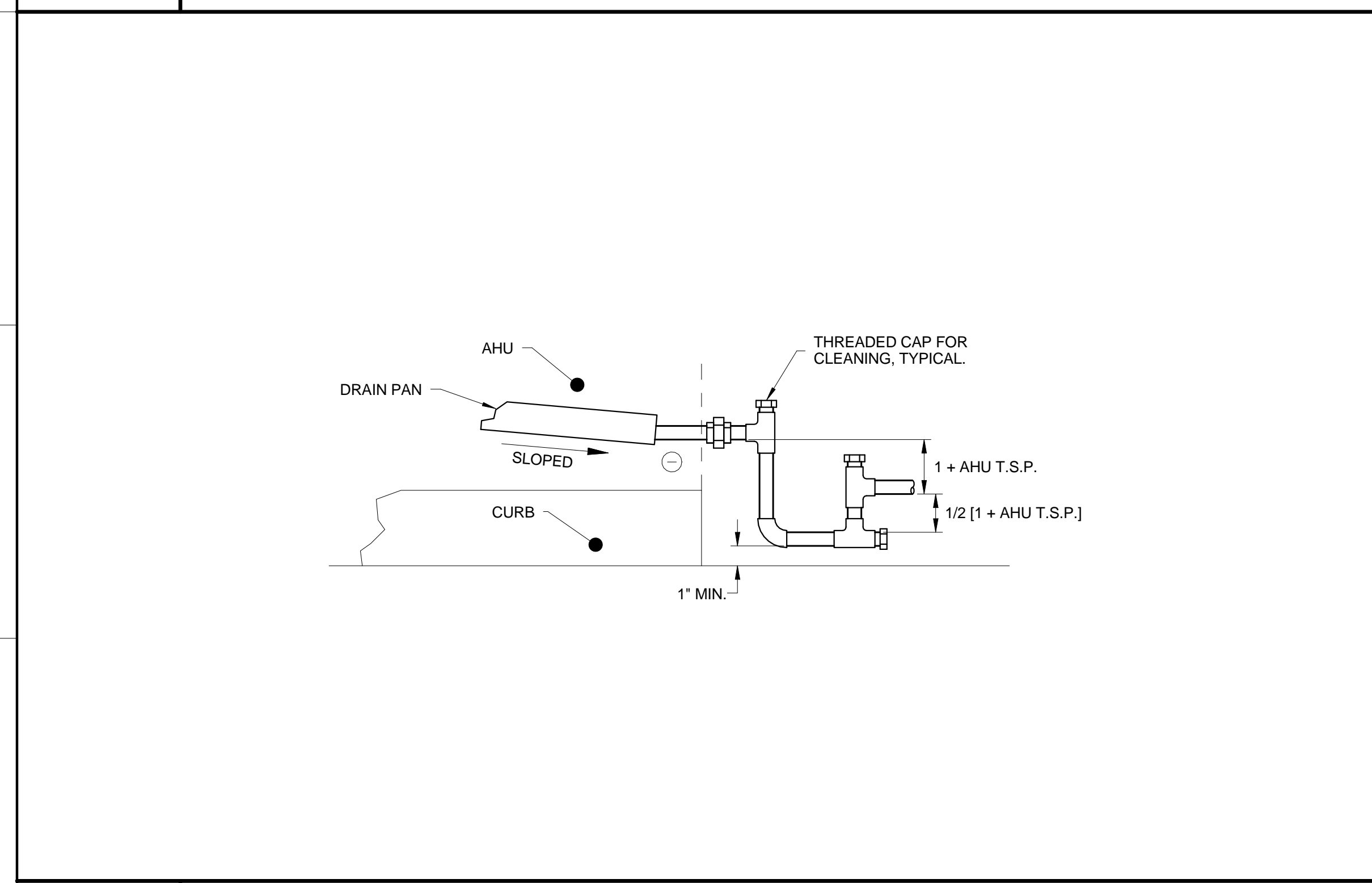
NO.	DESCRIPTION	DATE



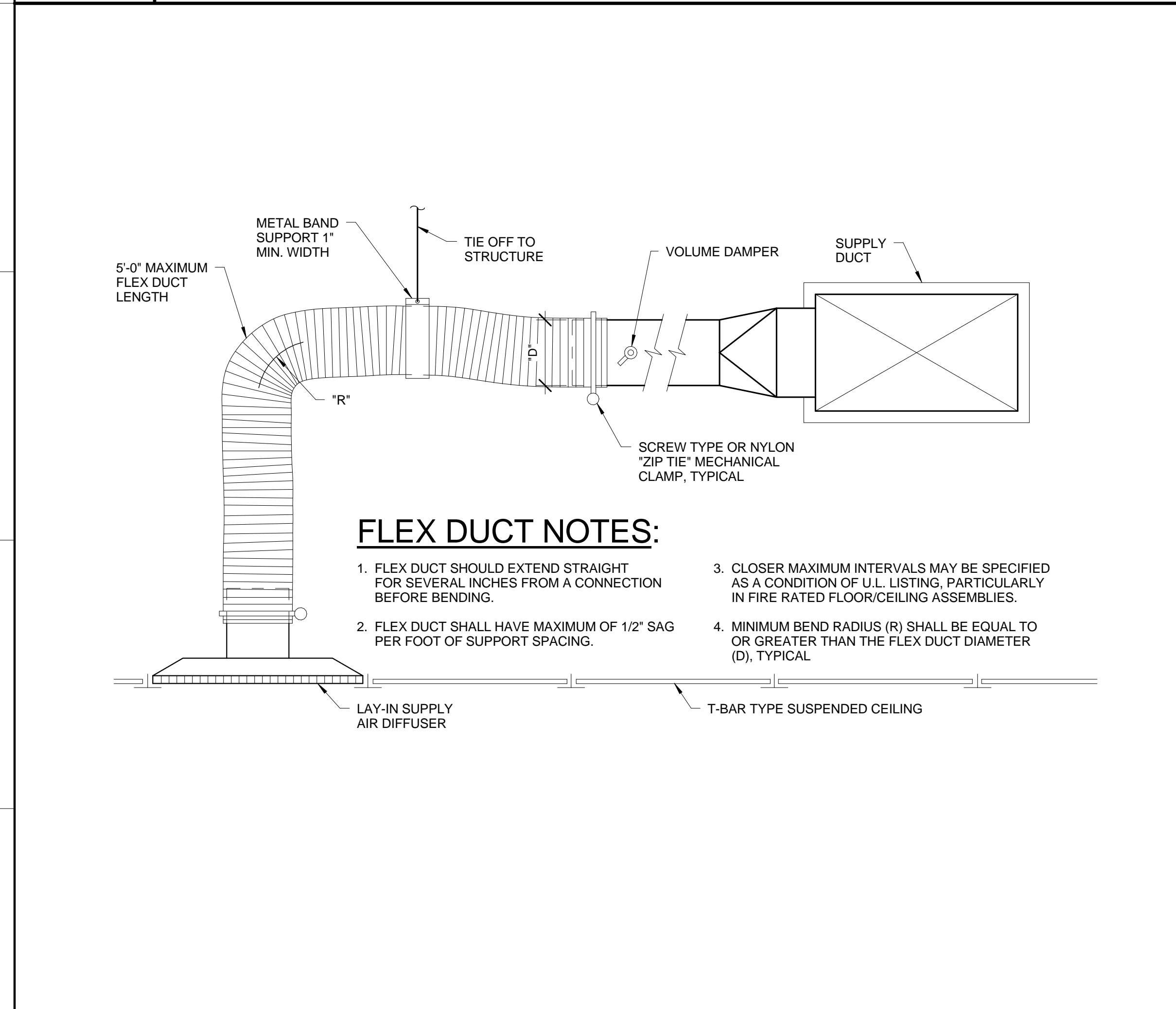
CONTENT:	
MECHANICAL DETAILS AND SCHEDULES	
DRAWN BY:	Author
PROJECT NO.:	14-075-00
DATE:	01/09/2015
REVISED:	
SCALE:	AS NOTED
M5.0	
Project Phase	
BID DOCUMENTS	
<small>COPYRIGHT © 2014 BY LAVALLEE BRENSINGER PROFESSIONAL ASSOCIATION. ALL RIGHTS RESERVED. NO REPRODUCTION WITHOUT PERMISSION.</small>	



C1 DETAIL - RETURN AIR REGISTER BOOT



F1 DETAIL - MUA CONDENSATE PIPING



J1 DETAIL - SUPPLY AIR BRANCH CONNECTION

TAG	SERVES	MANUFACTURER	MODEL	VOLTS	PHASE	HEAT INPUT (KW)	AMPS	NO. OF ELEMENTS	TEMP RISE (DEG-F)	WATER STORAGE (GAL)	HEIGHT (INCHES)	DIA (INCHES)	NOTES
WH-1	LAB AND PREP	AO SMITH	DVE 120-12	208	3	6.0	16.7	3.0	90	119	62 1/4"	29 1/2"	1

NOTES:
1. WATER HEATER TO HAVE DRAIN PAN FIT TO ROOM

TAG	MANUFACTURER-MODEL	TYPE	DRIVE	CFM	SP (IN WC)	EFFECTIVE PLUME HEIGHT (10MPH WIND)	NOZZLE VELOCITY (FFM)	MAX RPM	MAX BHP	MOTOR HP	MOTOR SPEED	STARTER FURN BY	DISC SWITCH FURN BY	VOLTS/PH	WEIGHT (LBS.)	DAMPER	SOUND POWER
EF-1	GREENHECK VEKTOR H-10-6	HI PLUME LAB EXHAUST	BELT	710	3/4"	14.9 FT.	3,350	2,323	0.47	3/4	1,760	DIV 26	FAN. MFR.	208/3/60	370	GRAVITY	65 dBA, 76 LWA
EF-2	GREENHECK VEKTOR H-10-7	HI PLUME LAB EXHAUST	BELT	885	3/4"	15.1 FT.	3,111	2,424	0.58	3/4	1,760	DIV 26	FAN. MFR.	208/3/60	370	GRAVITY	66 dBA, 78 LWA
EF-3	GREENHECK VEKTOR H-10-7	HI PLUME LAB EXHAUST	BELT	885	3/4"	15.1 FT.	3,111	2,424	0.58	3/4	1,760	DIV 26	FAN. MFR.	208/3/60	370	GRAVITY	66 dBA, 78 LWA

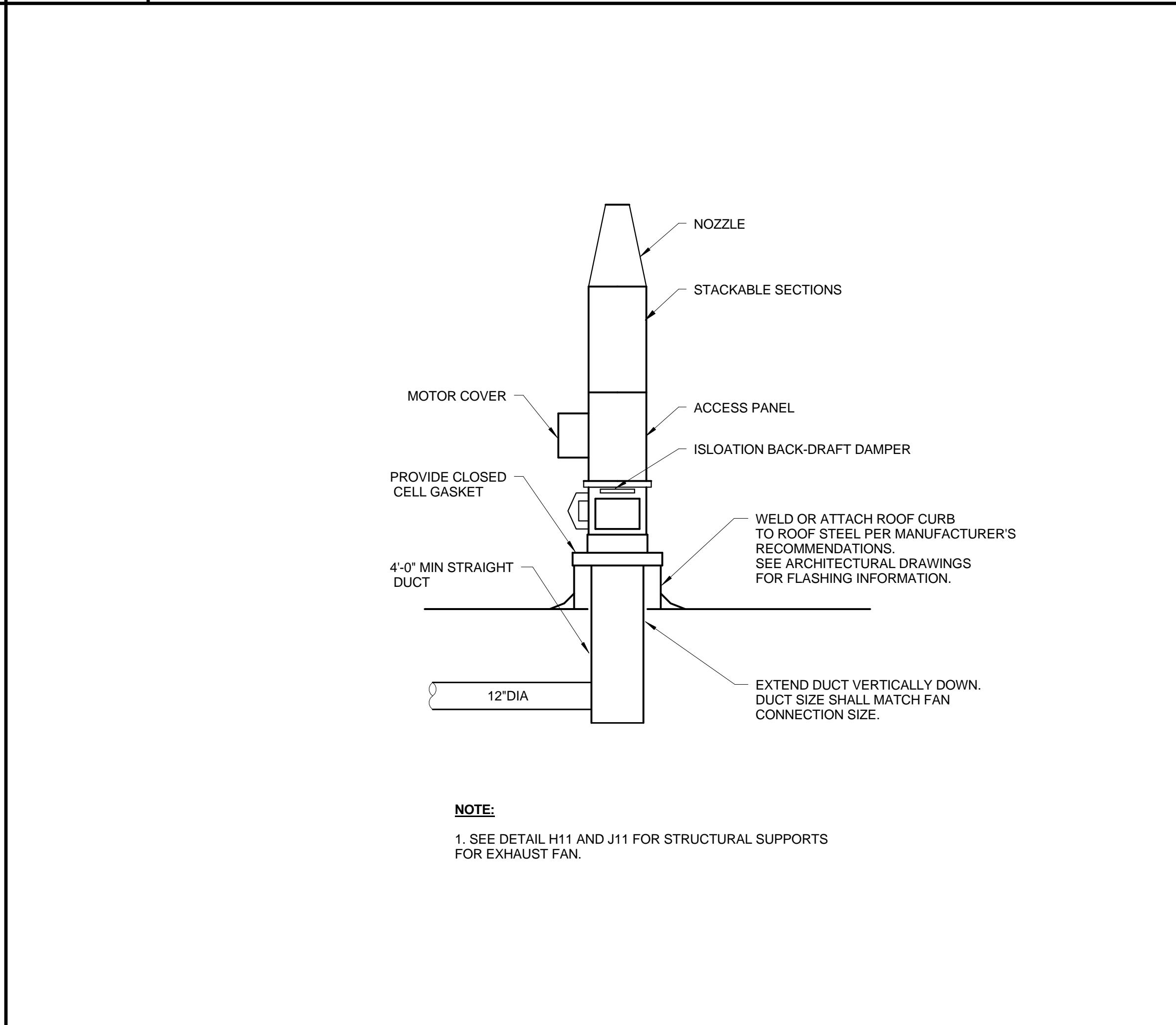
NOTES:
1. FAN SHALL BE SELECTED AT "MEDIUM" DRIVE LOSS
2. FAN SELECTION IS SIZED FOR REDUCED NOISE LEVELS (FAN AVAILABLE MEETING PERFORMANCE AT 66 dBA - NOT ACCEPTABLE). MAXIMUM SOUND POWER AS INDICATED.

TAG	PRICE MODEL	TYPE	NECK SIZE	FACE SIZE	CFM RANGE	MAX TOTAL P.D. (IN.W.C.)	MAX NC LEVEL	BORDER TYPE	BLOW
S-1	SCDA	SO. CEILING SUPPLY DIFFUSER	8" DIA	24" X 24"	151-275	0.07"	19	LAY-IN	4-WAY, ADJUSTABLE
S-2	FRFDA	HI-VOLUME, LO-VELOCITY RADIAL AIR DIFF	8" DIA	24" X 24"	200-300	0.10"	23	LAY-IN	SEE NOTE ON PLANS, ADJUSTABLE
E-1	630	ALUM. RETURN GRILLE, 3/4" SPACING, 35 DEG VANES	22" X 10"	22" X 10"	140-550	0.03"	27	LAY-IN	

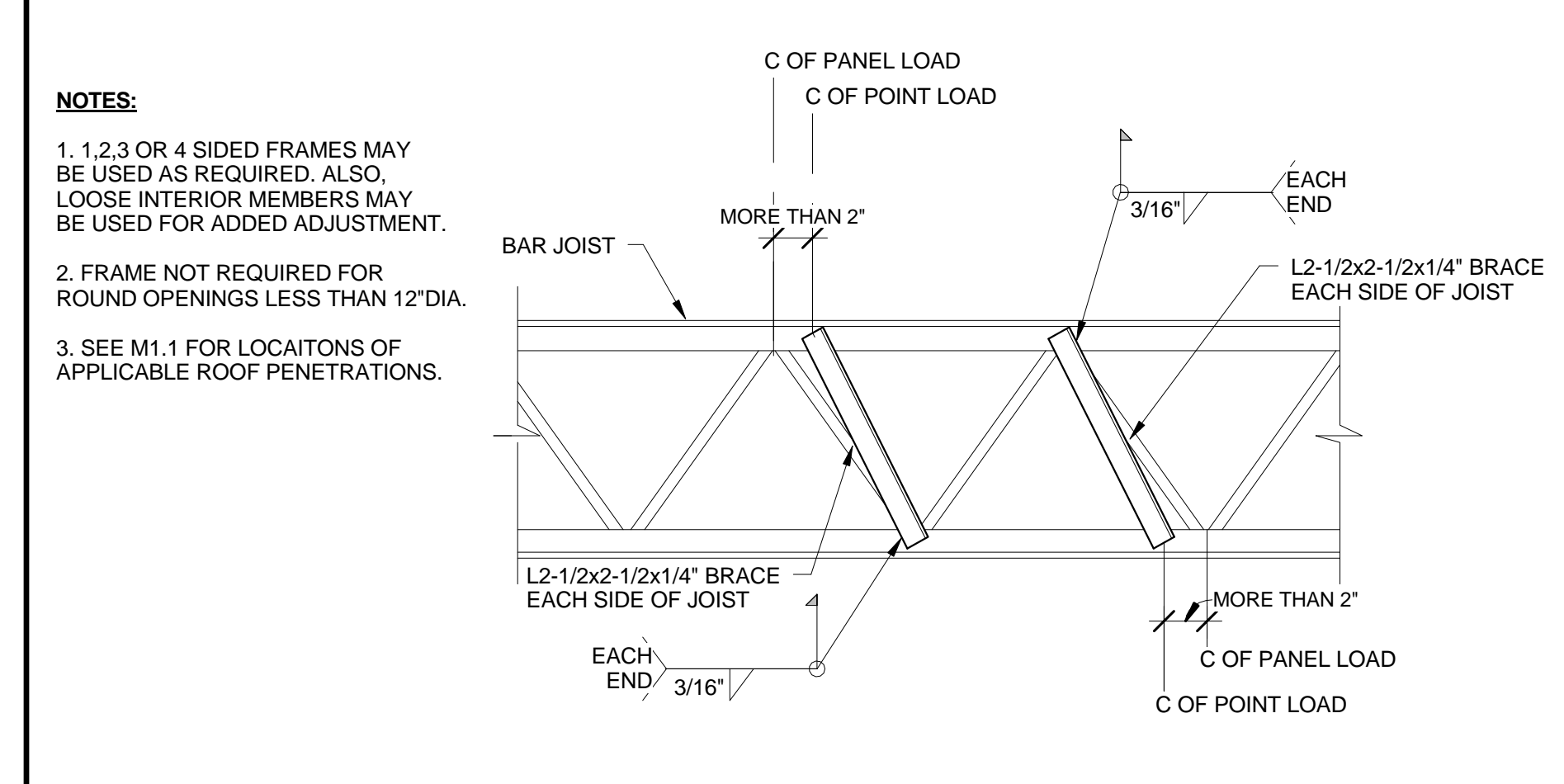
TAG	EQUIPMENT	FURNISHED BY	MANUFACTURER	CFM	S.P. (IN. W.C.)	DUCT CONN	BRANCH SIZES							NOTES		
							CW W/STOP	HW W/STOP	TW	NAT GAS W/STOP	COMP AIR	VAC	INDIRECT WASTE		VENT	WASTE
P-1	CLASSROOM LAB SINK	SINK DIV 11 / FAUCET DIV 22	SEE SPEC 224000				3/8"	3/8"						1-1/2"	1-1/2"	
P-2	PREP ROOM LAB SINK	SINK DIV 11 / FAUCET DIV 22	SEE SPEC 224000				3/8"	3/8"						1-1/2"	1-1/2"	
P-3	LAB CUP SINK	SINK DIV 11 / FAUCET DIV 22	SEE SPEC 224000				1/2"							1-1/2"	1-1/2"	
FH-1	5'-0" FUME HOOD	DIV 11	SEE SPEC 115313	295	0.07"	8"	1/2"	1/2"	1/2"	1/2"	1/2"	1/2"	1/2"	1-1/2"	1-1/2"	NOTE 1
FH-2	4'-0" FUME HOOD	DIV 11	SEE SPEC 115313	250	0.07"	8"	1/2"	1/2"	1/2"	1/2"	1/2"	1/2"	1/2"	1-1/2"	1-1/2"	NOTE 1
CA-1	AIR COMPRESSOR	DIV 22	GAST	5												50 PSIG
VP-1	VACUUM PUMP	DIV 22	GAST	5												19" Hg
A	COMP AIR TURRET	DIV 22	SEE SPEC 224000	1									1/2"			1/2" CA BRANCH PIPE
V	VAC TURRET	DIV 22	SEE SPEC 224000	1									1/2"			1/2" VAC BRANCH PIPE
G	NAT GAS TURRET	DIV 22	SEE SPEC 224000	1									1/2"			1/2" NG BRANCH PIPE
SS-1	SAFETY STATION EYEWASH/SHOWER	DIV 22	SEE SPEC 224000				1"	1"	1-1/4"							TMV-2
DH-1	DRENCH HOSE	DIV 22	SEE SPEC 224000				1/2"	1/2"	1/2"							TMV-3
FD-1	FLOOR DRAIN	DIV 22					1/2"	1/2"						1-1/2"	1-1/2"	NOTE 2
DW	DISHWASHER	OWNER												1/2"		AIR GAP CONNECTION
RO	RO UNIT	OWNER					1/2"									SEE DETAIL C1/P5.0

NOTES:
1. INTEGRAL CUP SINK AND GAS, AIR AND VACUUM OUTLETS.
2. WITH TRAP PRIMER CONNECTION

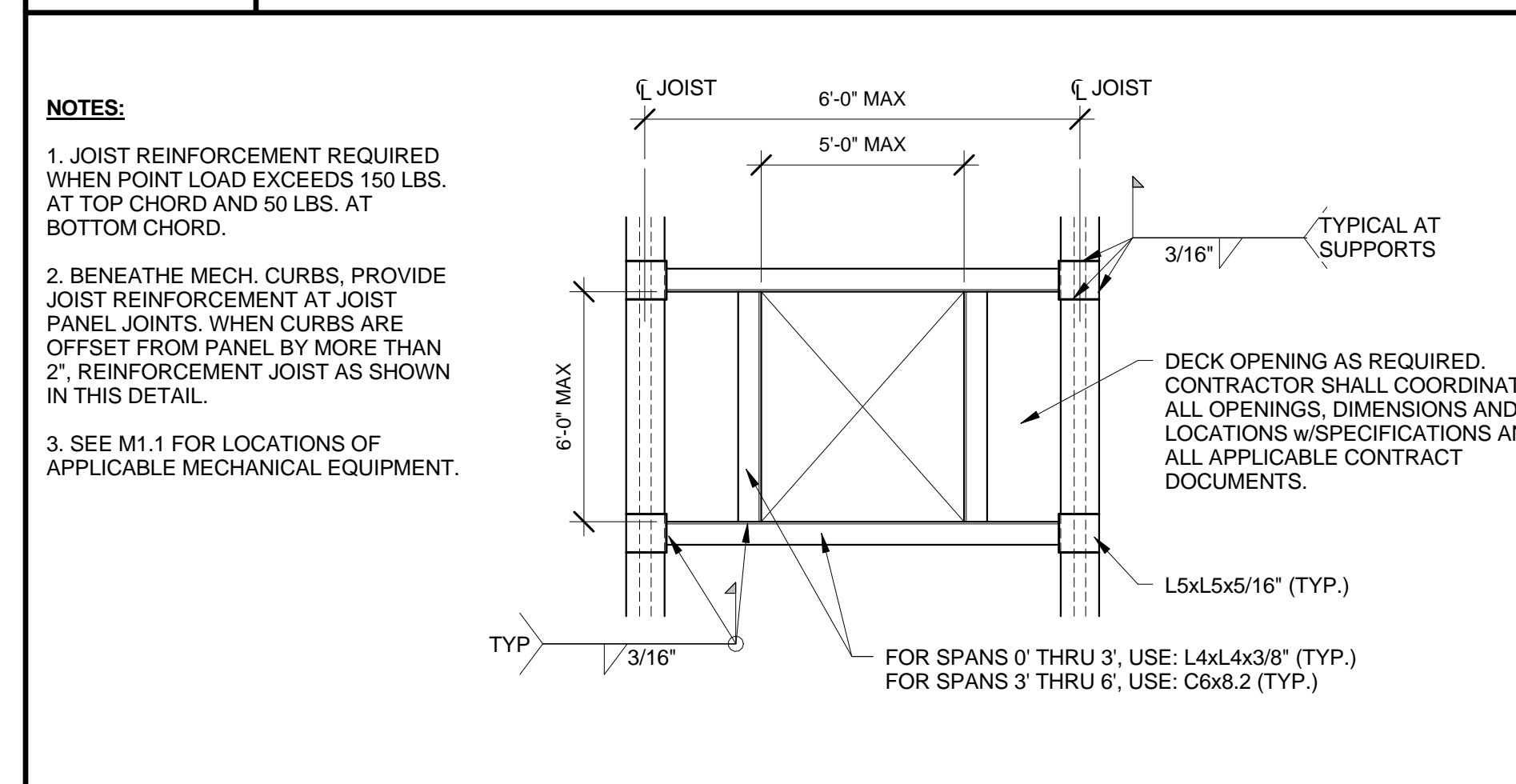
F6 MECHANICAL SCHEDULES



J6 DETAIL - HOOD EXHAUST FAN



H11 DETAIL - TRUSS FIELD MODIFICATION FOR POINT LOAD > 200#



J11 DETAIL - TYPICAL FRAMED OPENING IN ROOF DECK U.N.O.