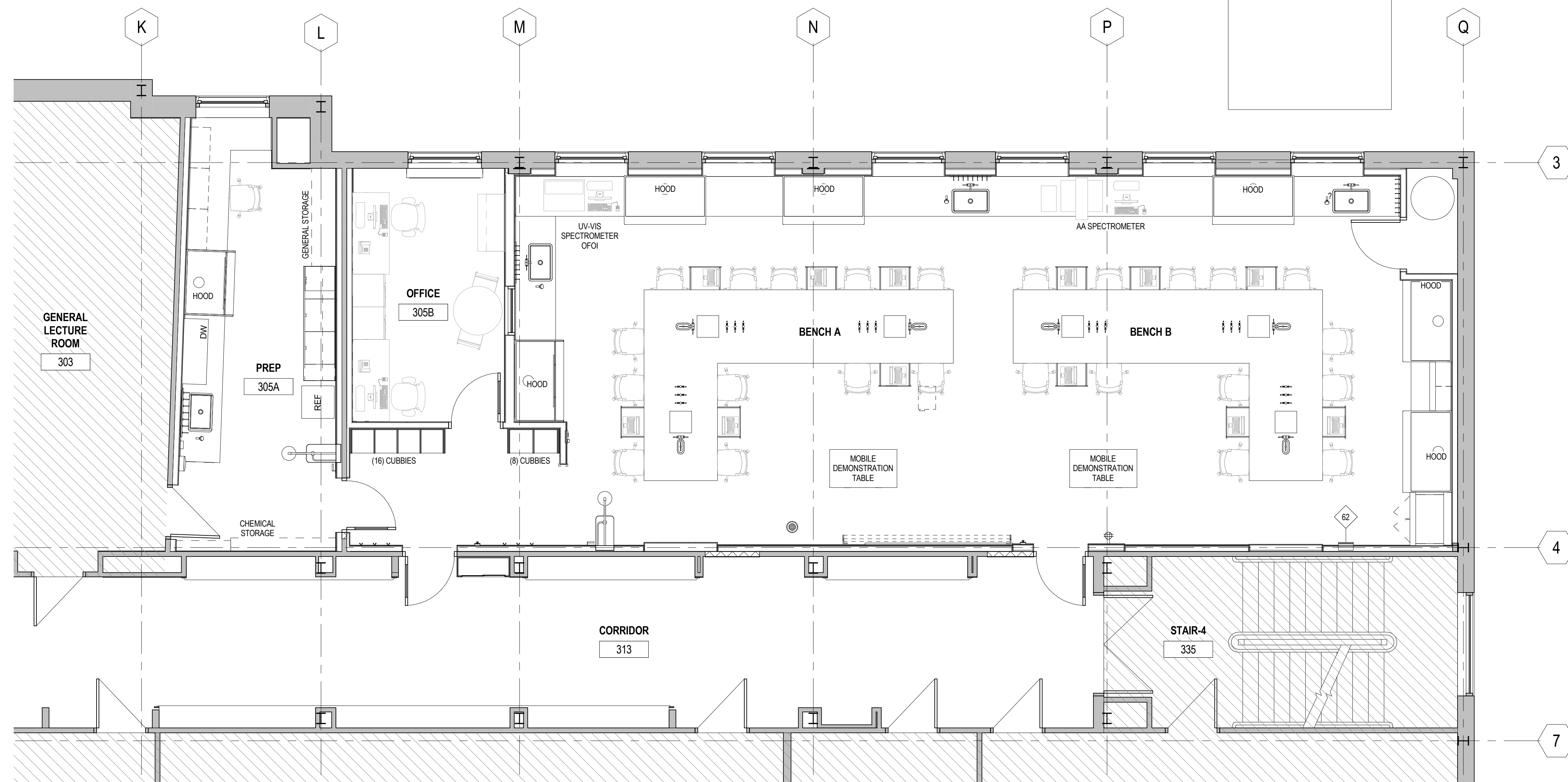




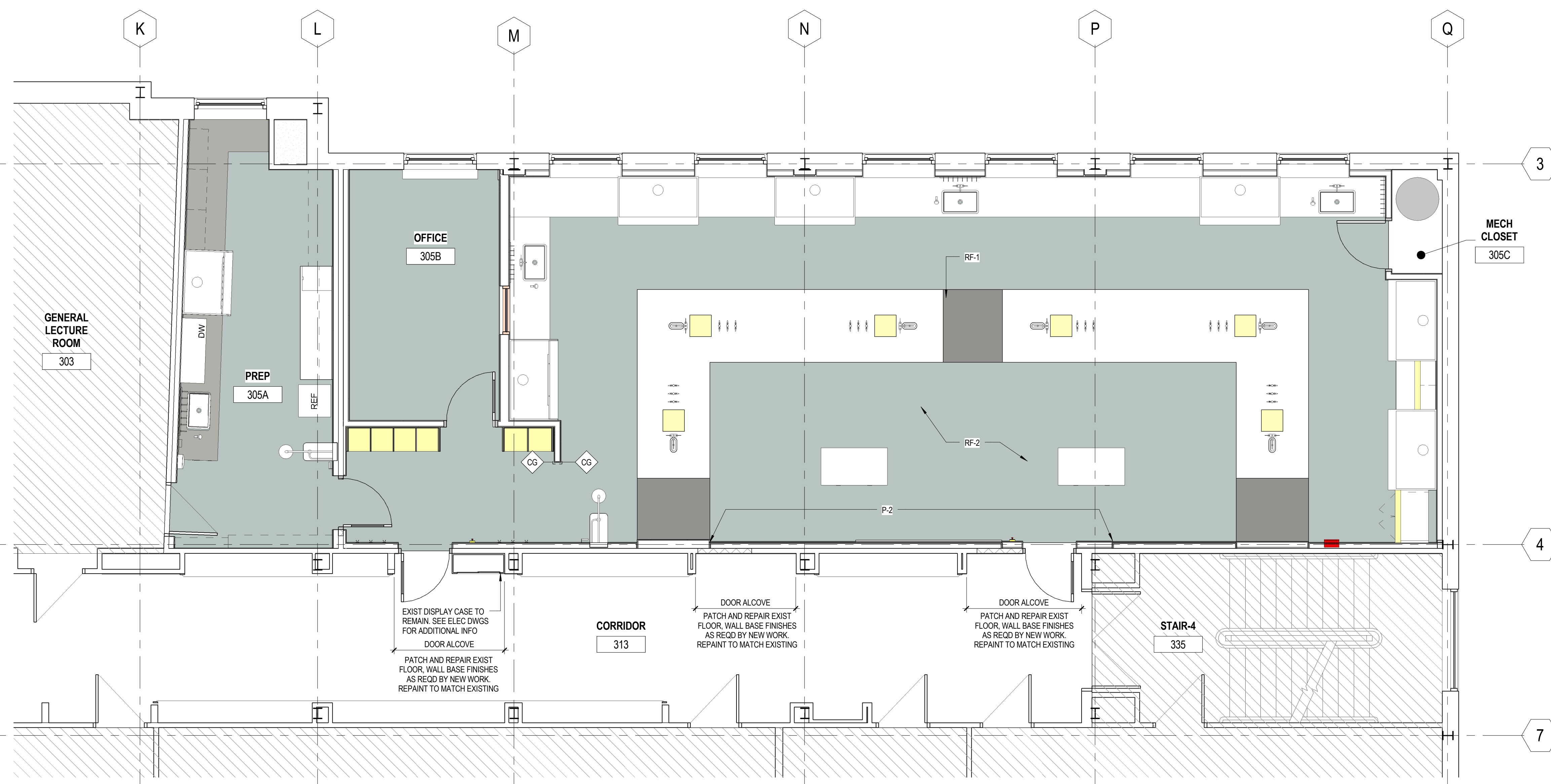
**GENERAL NOTES**  
 1. ALL FURNITURE & EQUIPMENT SHOWN IN HALFTONE ON THIS SHEET IS SHOWN FOR INFORMATION ONLY. THESE ARE BY SEPARATE CONTRACT I.E. NOT TO BE BID AS PART OF THIS CONTRACT



FINISH LEGEND	
09 65 00 RESILIENT FLOORING	10 26 01 WALL PROTECTION PANEL
RF-1 TYPE: RUBBER SHEET MANUF: NORA RUBBER SERIES: NORAPLAN DEGREE WIDTH/SIZE: 4' WIDE ROLLS COLOR: 6329 DENVER	CG-1 TYPE: CORNER GUARDS NOTES: SEE FLOOR PLAN FOR TYPE CG COLOR CHART P-1 XXXX #0000
RF-2 TYPE: RUBBER SHEET MANUF: NORA RUBBER SERIES: NORAPLAN DEGREE WIDTH/SIZE: 4' WIDE ROLLS COLOR: 6330 JUNEAU	12 36 00 EPOXY RESIN
ICB-1 TYPE: INTEGRAL COVE BASE HEIGHT: 6"	ER-1 TYPE: MOLDED EPOXY RESIN COUNTERTOP MANUF: KEVAURNEE SERIES: KEMRESIN COLOR: GREY
09 90 00 PAINT and COATING	12 24 00 WINDOW TREATMENTS
P-1 TYPE: PAINT MANUF: PITTSBURGH PAINTS COLOR: PPG 5088B 72/945 (RL 1 464) FINISH: EPOXY	WT-1 TYPE: MANUAL SHADES @ OFFICE & PREP MANUF: MECHOSHADE SERIES: MECHO 5 SERIES COLOR: TBD
P-2 TYPE: PAINT MANUF: PITTSBURGH PAINTS COLOR: PPG 1218-3 LIVELY LAUGH LRV68 FINISH: EPOXY	WT-2 TYPE: MOTOR SHADES @ CHEMISTRY LAB MANUF: MECHOSHADE SERIES: MECHO 5 SHADE & BLACKOUT COLOR: TBD
P-3 TYPE: PAINT MANUF: TBD COLOR: TBD FINISH: -	MISCELLANEOUS
	TBD TO BE DETERMINED
	PTM PATCH TO MATCH
	ETR EXISTING TO REMAIN
	SC SEALED CONCRETE

**GENERAL NOTES:**  
 1. REFER TO FINISH SCHEDULE FOR MORE INFORMATION. REFER TO AI DRAWINGS FOR FLOOR PATTERNS AND ACCENT WALL LOCATIONS.  
 2. HM DOOR FRAMES AND WINDOW FRAMES ARE TO BE PTD TO MATCH ADJACENT WALLS, UCN.  
 3. ALL GWB CEILINGS AND SOFFITS SHALL BE PAINTED FLAT P-1 UNLESS NOTED OTHERWISE ON THE REFLECTED CEILING PLAN. REFER TO R.C.P FOR ALL NOTATIONS REGARDING ACCENT SOFFITS AND GWB CEILING PAINTS.  
 4. ALL EXPOSED STEEL COMPONENTS ARE TO BE PAINTED.  
 5. ALL FINISHED FLOORING SHALL EXTEND BENEATH CASEWORK, MILLWORK, AND PLUMBING FIXTURES U.N.O.  
 6. ALL SHEET FLOORING SEAMS SHALL BE WELDED WITH MATCHING WELD COLORS.  
 7. NO TRANSITION STRIPS REQUIRED BETWEEN RESILIENT FLOORINGS.  
 8. WINDOW SILLS SHALL BE ER-1.  
 9. ALLOW ADDITIONAL LEAD TIME FOR ORDERING, SHIPPING, AND FABRICATION OF SPECIFIED INTERIOR FINISH MATERIALS IN MANUFACTURER AVAILABLE SHEET SIZES. **SUBSTITUTIONS WILL NOT BE ACCEPTED.**  
 10. ALL CASEWORK FINISHES ARE TO BE BY LABORATORY FURNITURE VENDOR. SEE SPECIFICATION FOR MANUFACTURER.

ID FINISH SCHEDULE								
ROOM #	ROOM NAME	FLOOR	BASE	WALLS	Casework Finish	Countertop Material	Windows	COMMENTS
305	CHEMISTRY LAB	RF-1/RF-2	ICB-1	P-1, P-2	BY VENDOR	ER-1	WT-2	
305A	PREP	RF-2	ICB-1	P-1	BY VENDOR	ER-1	WT-1	
305B	OFFICE	RF-2	ICB-1	P-1	BY VENDOR	-	WT-1	
305C	MECH CLOSET	RF-1	ICB-1	P-1	-	-	-	
313	CORRIDOR	ETR	PTM	PTM	-	-	-	



UNIVERSITY OF SOUTHERN MAINE

**PAYSON-SMITH HALL  
 CHEMISTRY LAB  
 RENOVATION**

96 Falmouth Street, Portland, ME,  
 04101

NO.	DESCRIPTION	DATE

CONTENT:  
 INTERIOR DESIGN PLANS

DRAWN BY: Author

PROJECT NO: 14-049-00

DATE: 01/09/2015

REVISED:

SCALE: As indicated

**ID1.1**

Project Phase  
**BID DOCUMENTS**

COPYRIGHT © 2014 BY LAVALLEE BRENSINGER PROFESSIONAL ASSOCIATION. ALL RIGHTS RESERVED. NO REPRODUCTION WITHOUT PERMISSION.