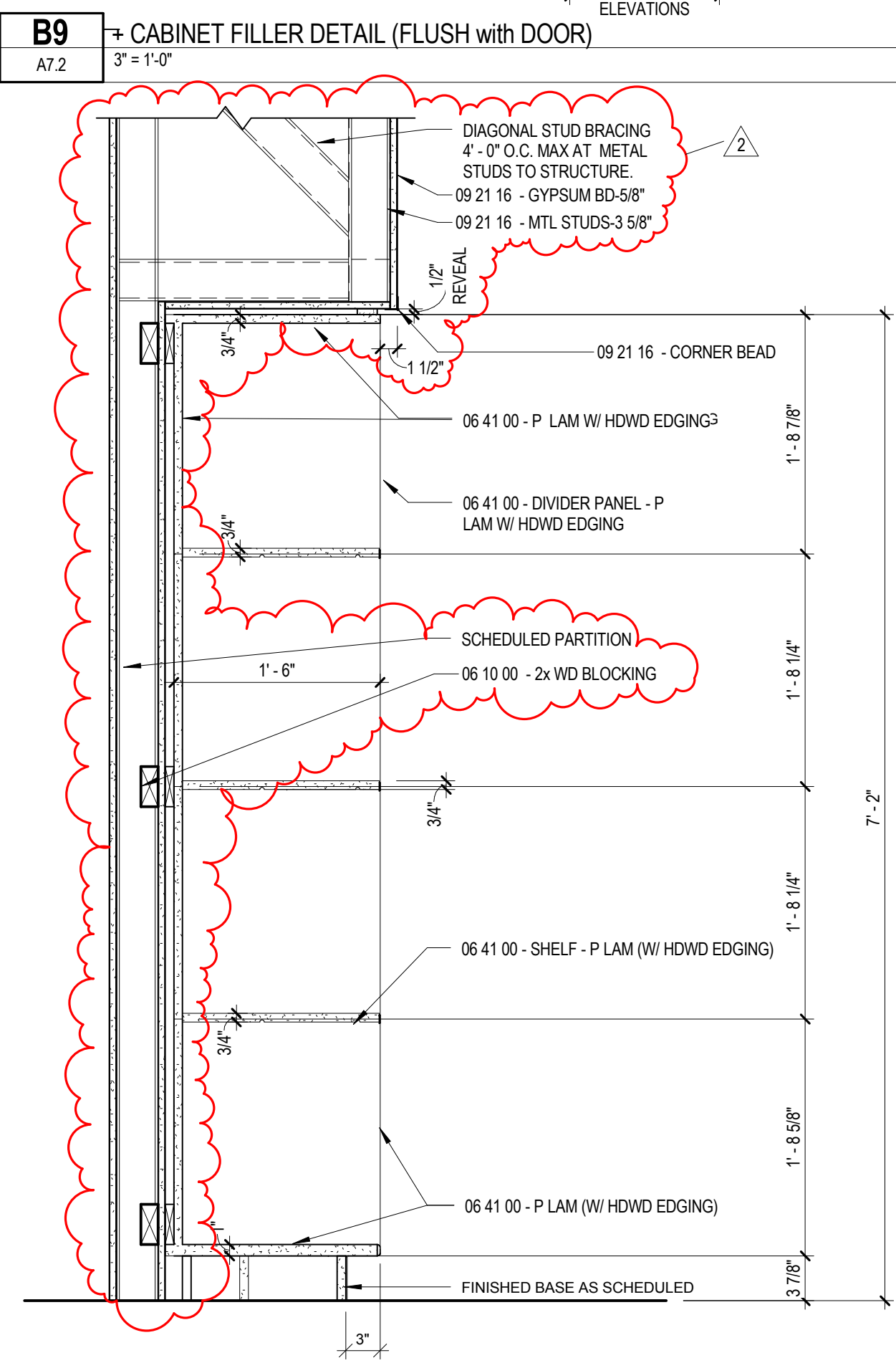
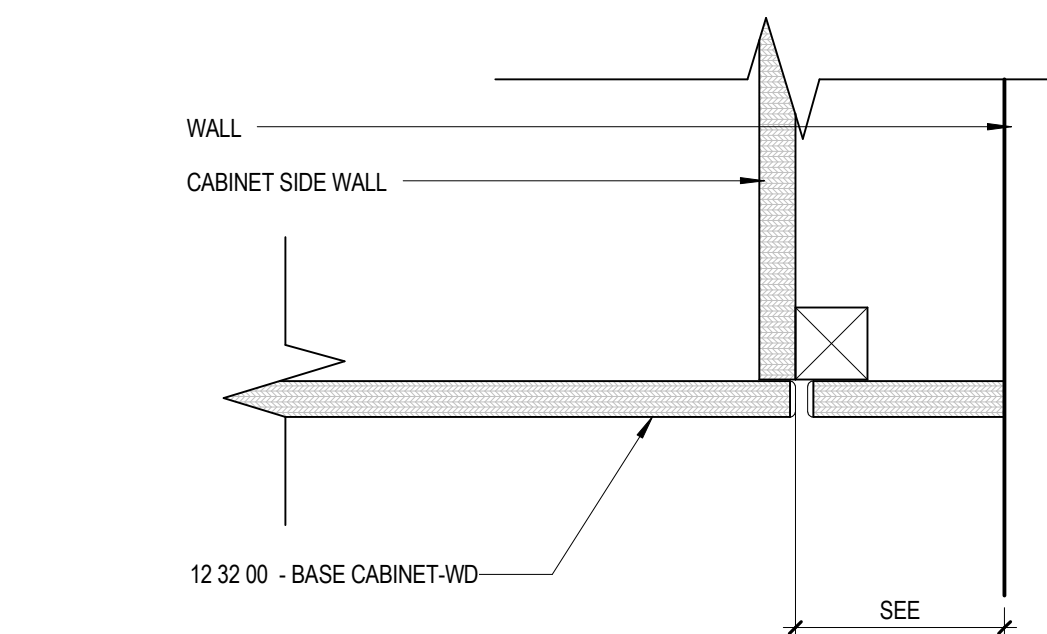
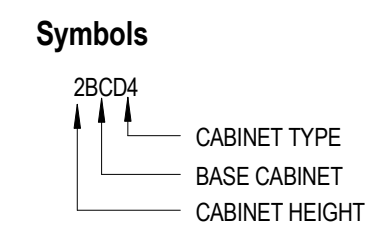




BASE CABINET LEGEND			
CASEWORK TYPE	UNDER 3'-0" (36") COUNTERTOP HEIGHT 1"	UNDER 2'-10" (34") COUNTERTOP HEIGHT 2"	TYPE NOTES
BC			HINGED SINGLE DOOR
BCBC			BLIND CORNER CABINET
BCD			HINGED SINGLE DOOR WITH DRAWER
BCD4			(4) DRAWERS
BCFH			FUME HOOD BASE CABINET - HINGED SINGLE OR DOUBLE DOOR. SEE INTERIOR ELEVATIONS
BCSC			SOLVENT STORAGE BASE CABINETS
BCVP			VACUUM PUMP STORAGE BASE CABINETS
BCSB			SINK BASE CABINETS
BCLD			LAPTOP DRAWER BASE CABINETS - TWO PULLOUT TRAYS
UPPER CABINET LEGEND			DOUBLE HINGED DOORS WOOD FRAMED SASH AND GLASS WITH TWO ADJUSTABLE SHELVES
WCG			

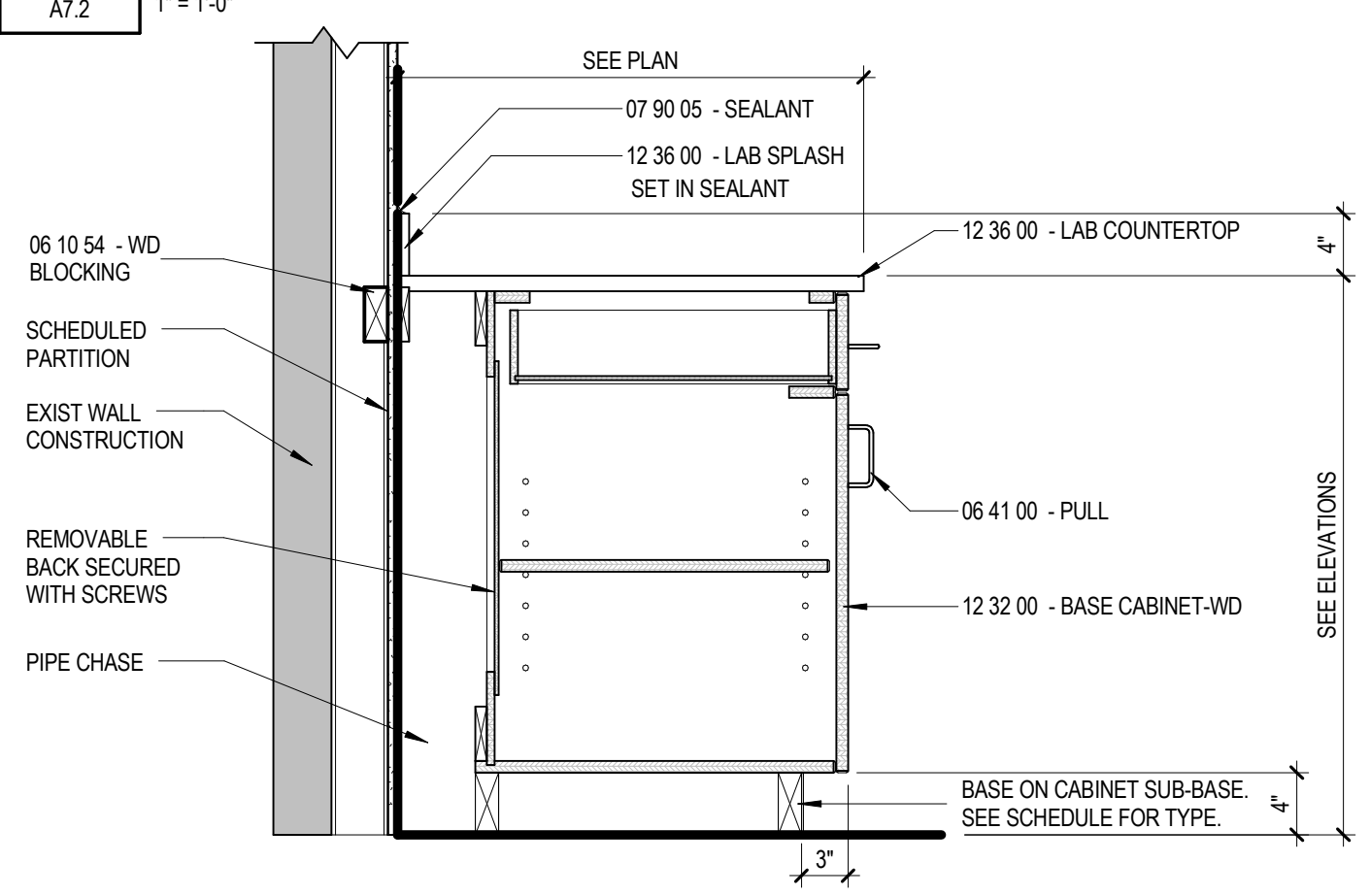
**MILLWORK - CASEWORK - COUNTERTOP NOTES:**

- General Notes
- Verify all conditions and dimensions in the field prior to fabrication.
  - Verify sizes and requirements of all Owner furnished equipment to be set into millwork and casework.
  - To the extent mechanical and electrical information indicated on architectural drawings, it is provided for convenience only and is not necessarily intended to represent all work required.
- Cabinets
- Finish exposed cabinet sides at ends, knee spaces, appliance recesses, etc to match face.
  - Return finish valance end panels to wall at exposed ends.
  - Recess base kickboard 3" at exposed ends where base cabinets are constructed with separate bases.
  - Provide complete base kickboards scribed to uneven floors.
  - Provide matching scribes to within 1/16" of adjacent surfaces.
  - Provide matching fillers (face and upper cabinet top & bottom) where required.
  - Provide and install locks per specification for all doors and drawers in Lab 305.
- Countertops
- All countertops to be 1" thick molded epoxy resin unless noted otherwise (U.N.O.)
  - Return side splash to align with edge of countertop nosing.

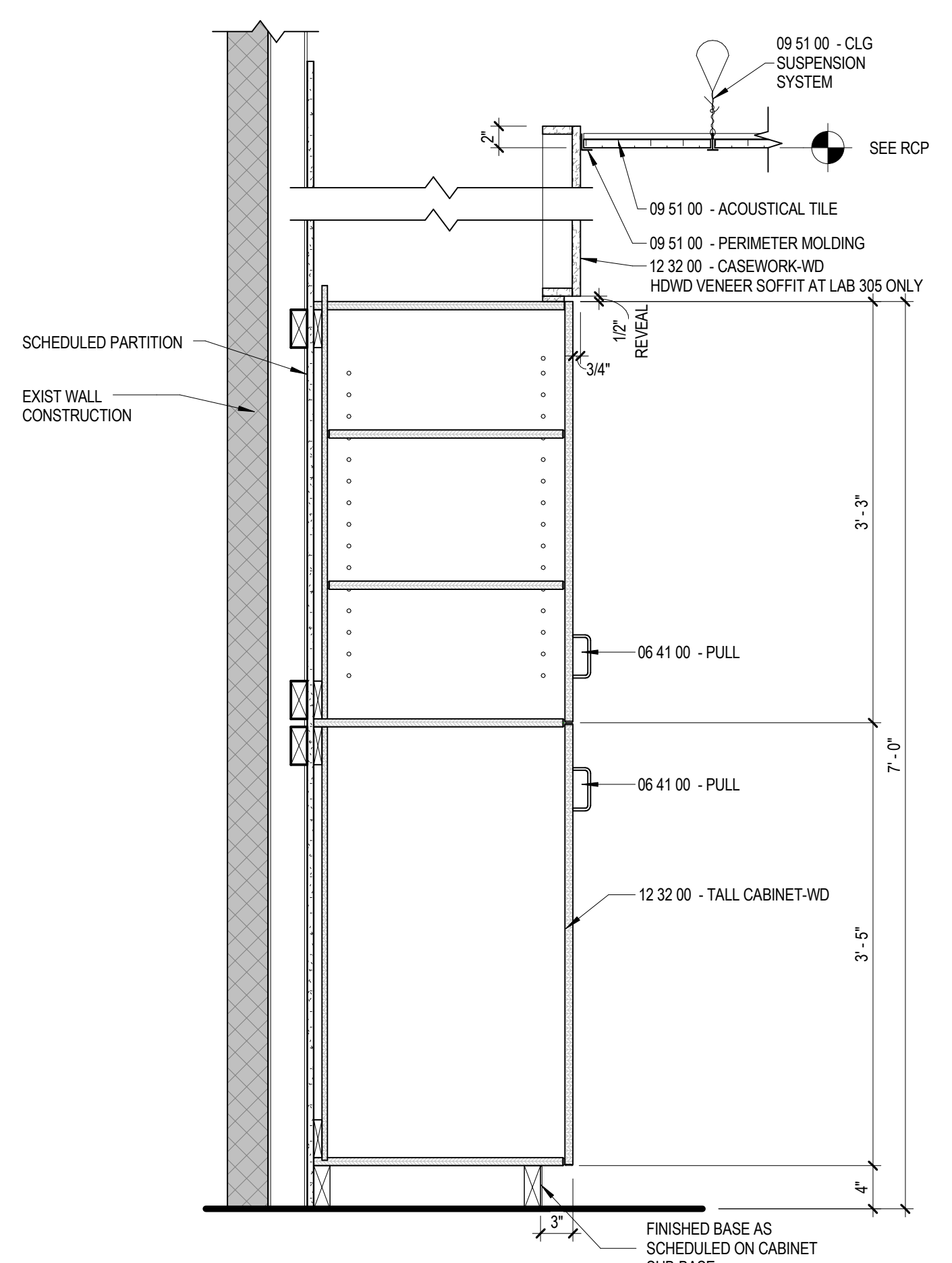


**E7** WALL CABINET SECTION (WCG)  
A7.2 1" = 1'-0"

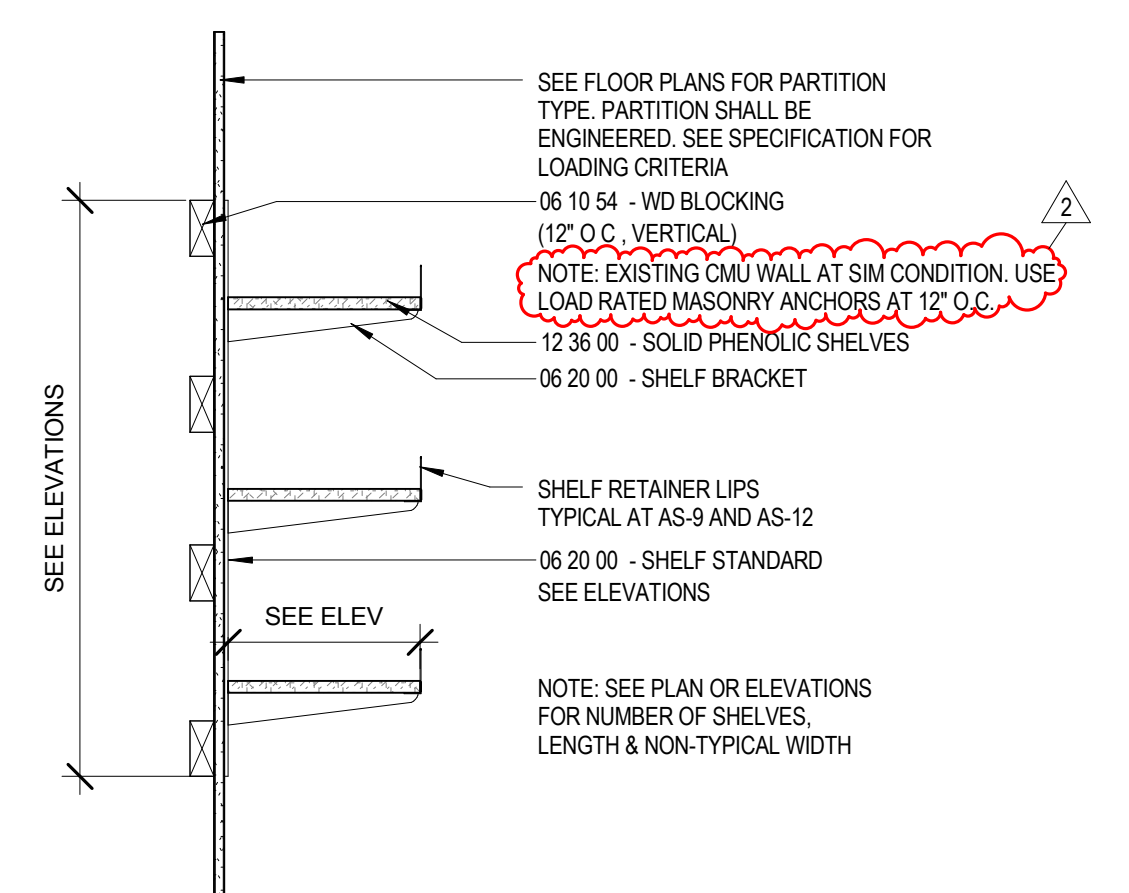
**E9** SHELVING  
A7.2 1" = 1'-0"



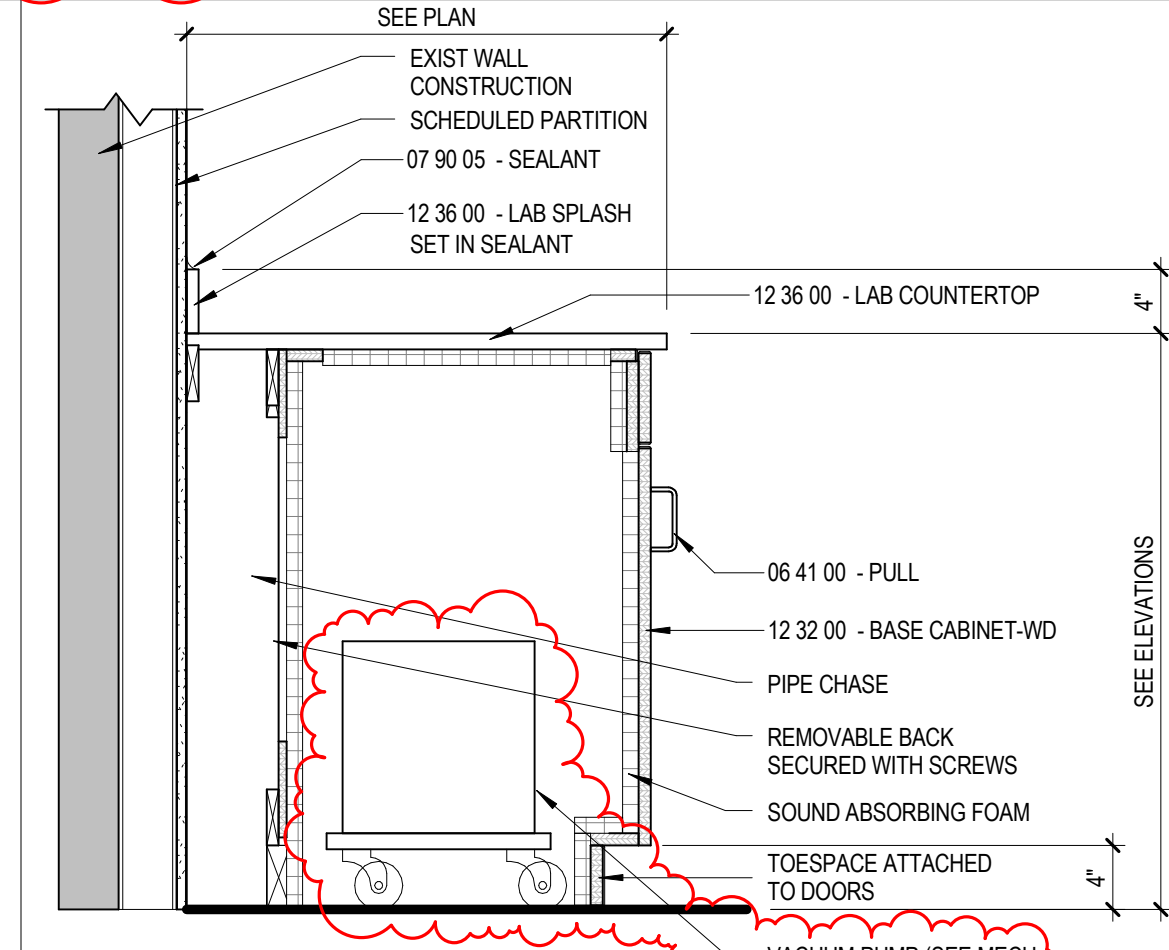
**G9** + BASE CABINET SECTION w DRAWER SECTION (BCD)  
A7.2 1" = 1'-0"



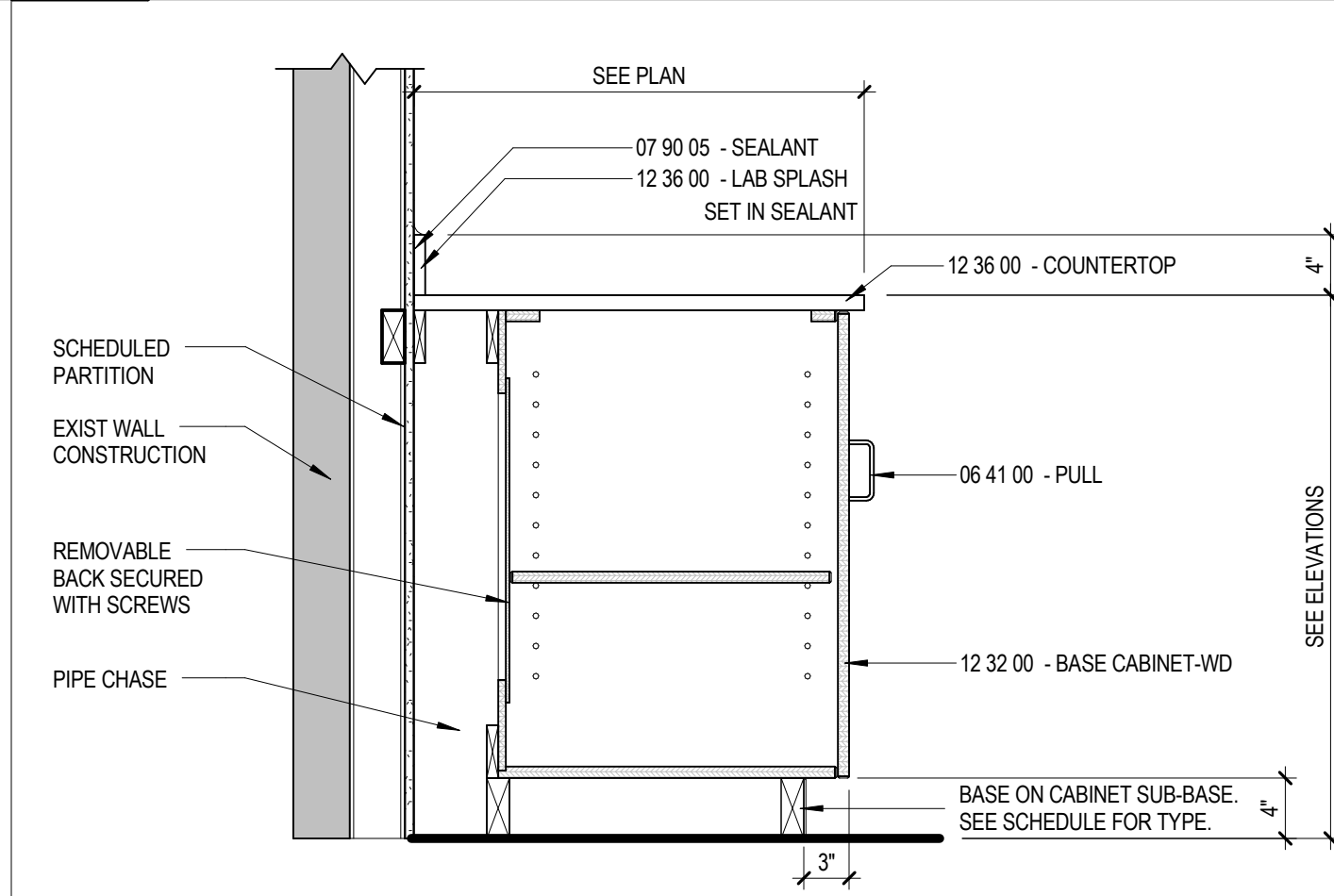
**E12** TALL STORAGE CABINET LOW-HIGH DOORS (TC4D)  
A7.2 1" = 1'-0"



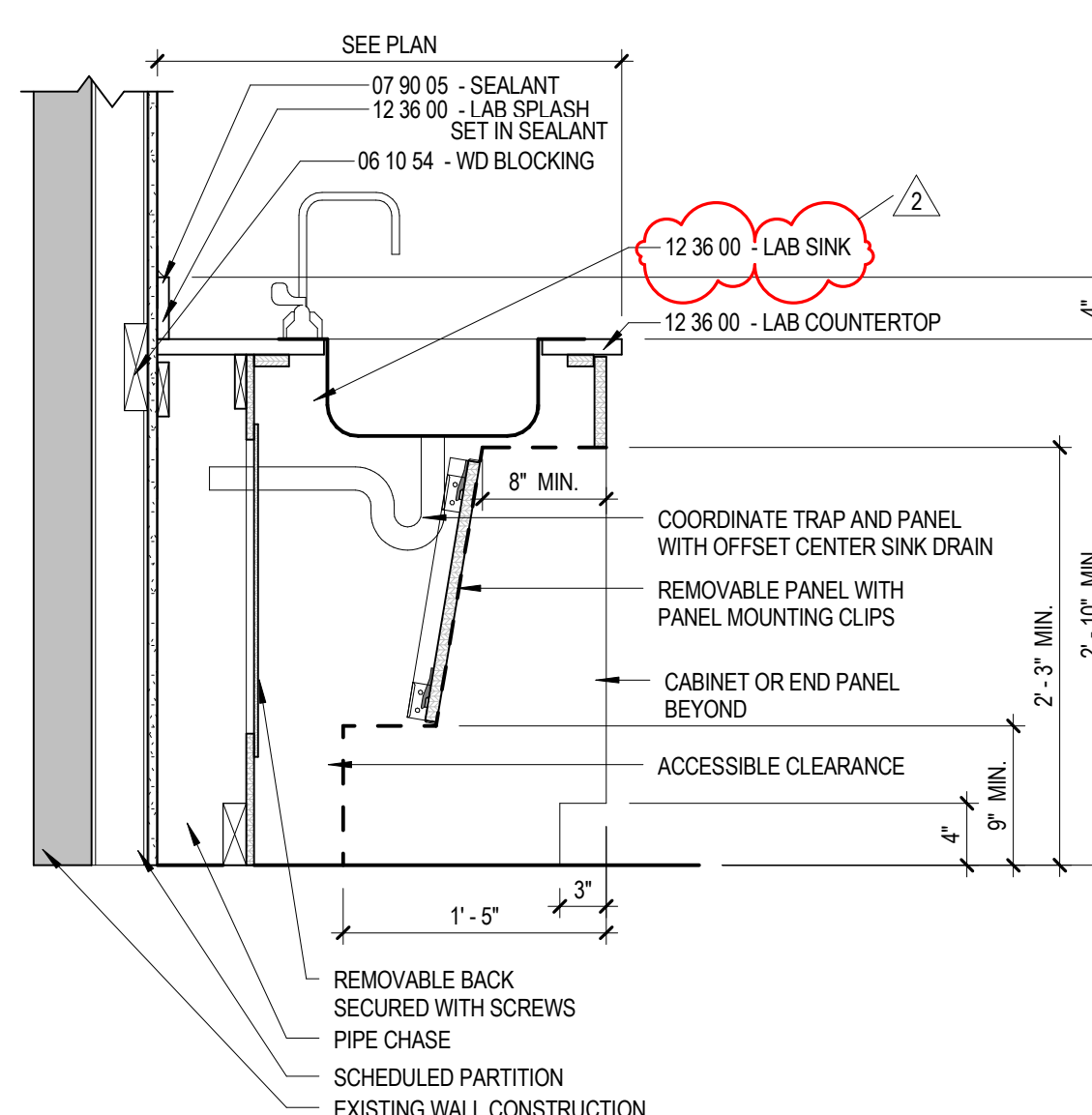
**G1** ADJUSTABLE SHELVING (AS)  
A7.2 1" = 1'-0"



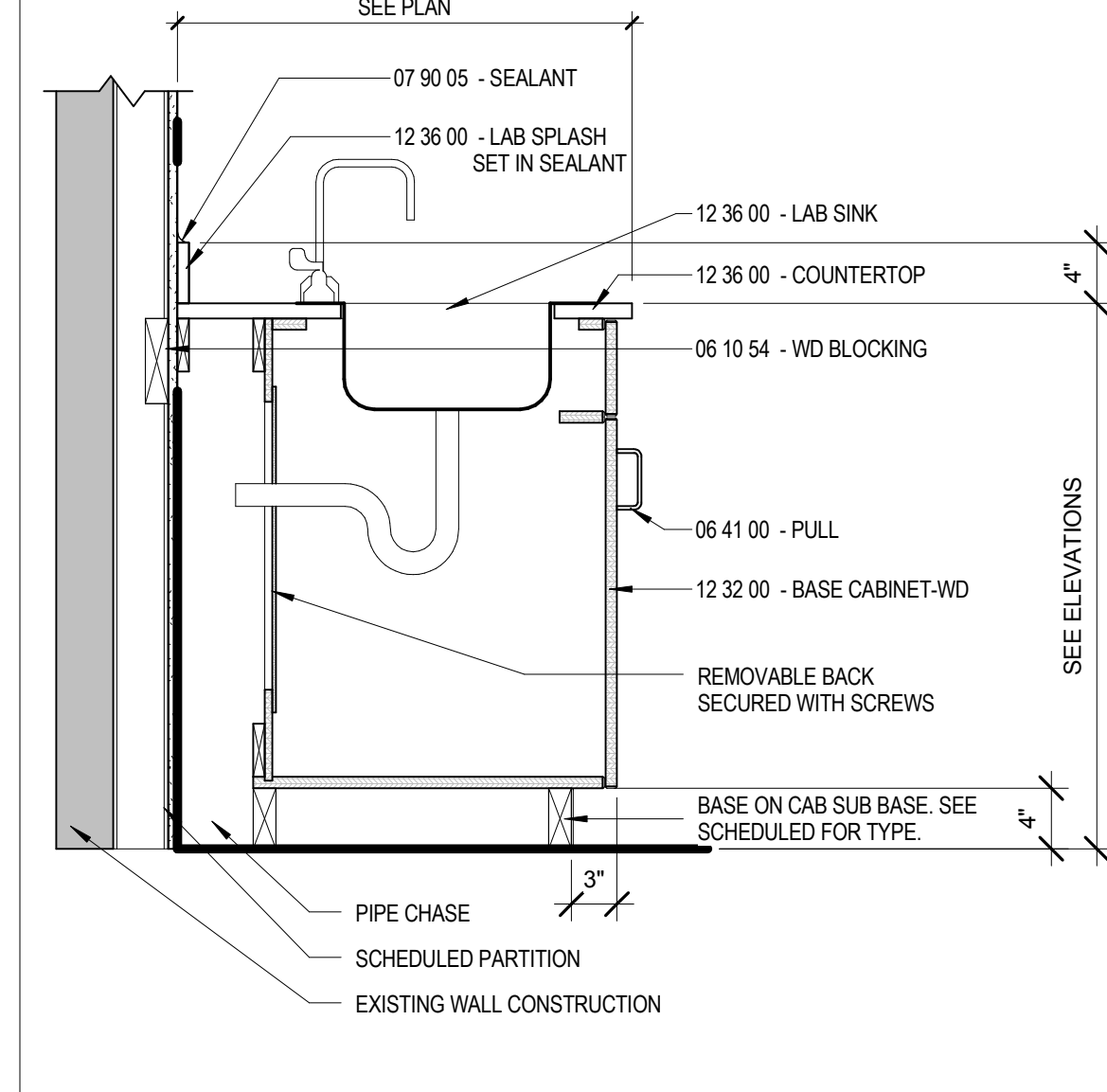
**G3** + BASE CABINET SECTION VACUUM PUMP (BCVP)  
A7.2 1" = 1'-0"



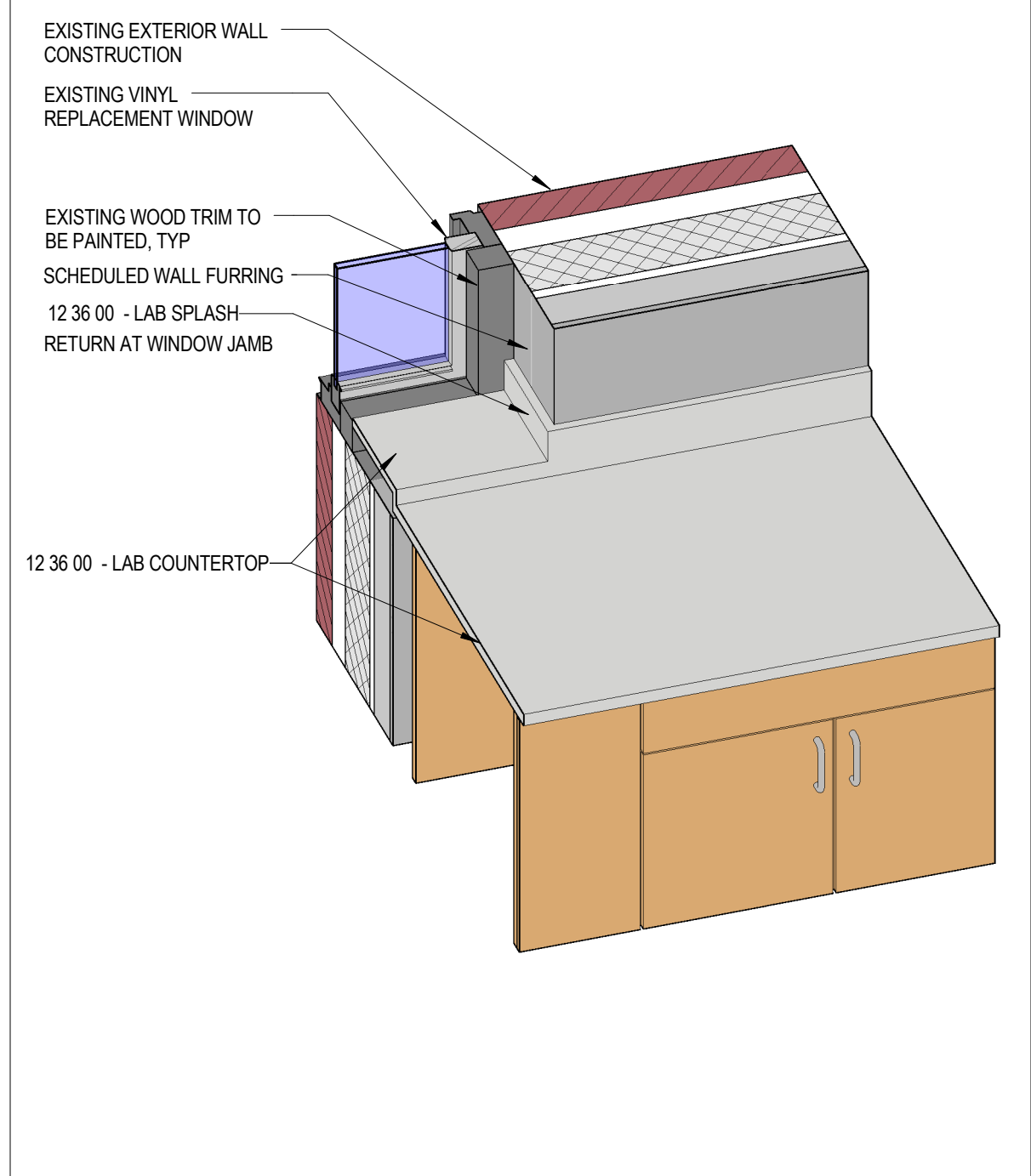
**G6** + BASE CABINET SECTION (BC)  
A7.2 1" = 1'-0"



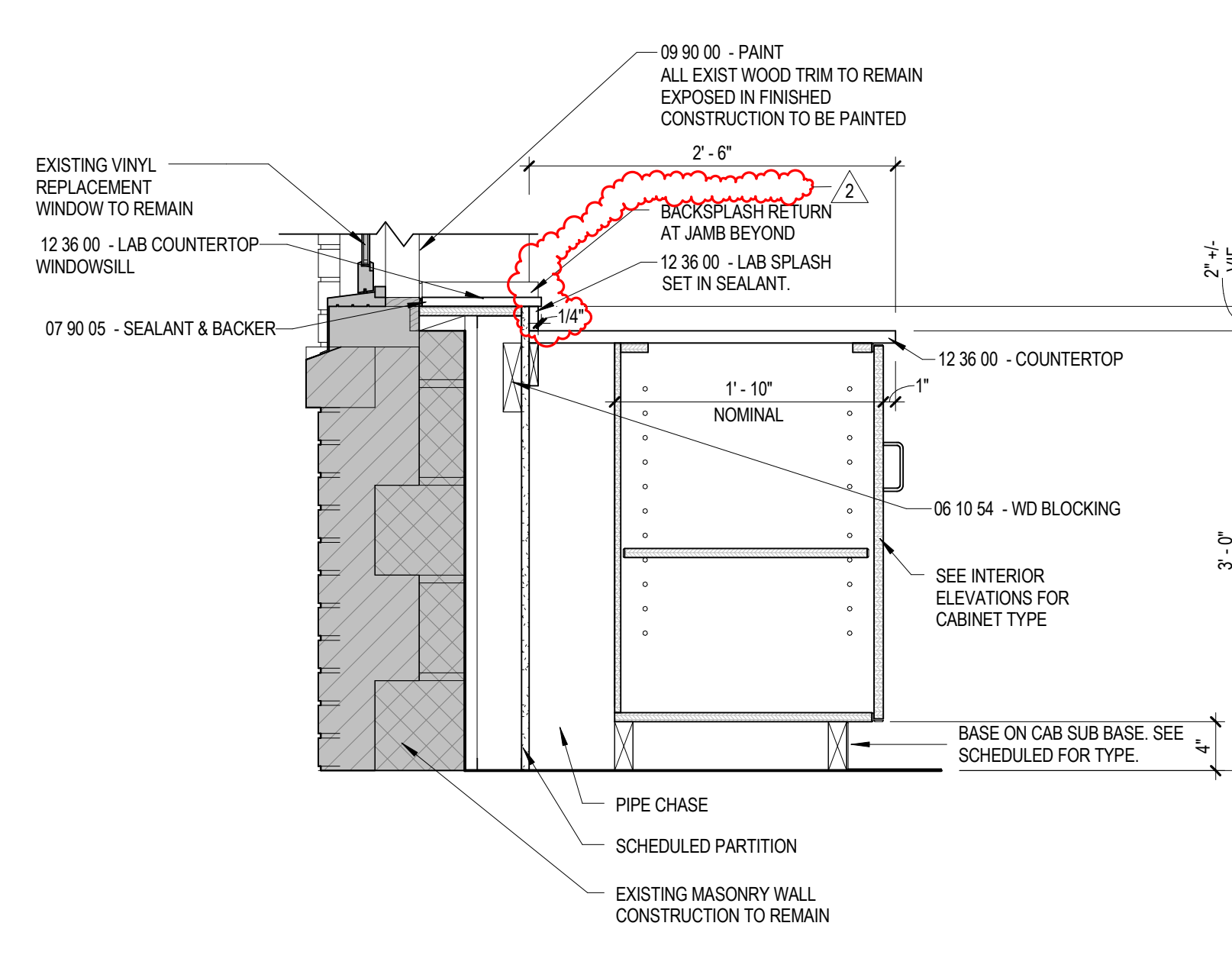
**J1** BASE CABINET SECTION w ACCESSIBLE SINK W/O DOORS  
A7.2 1" = 1'-0"



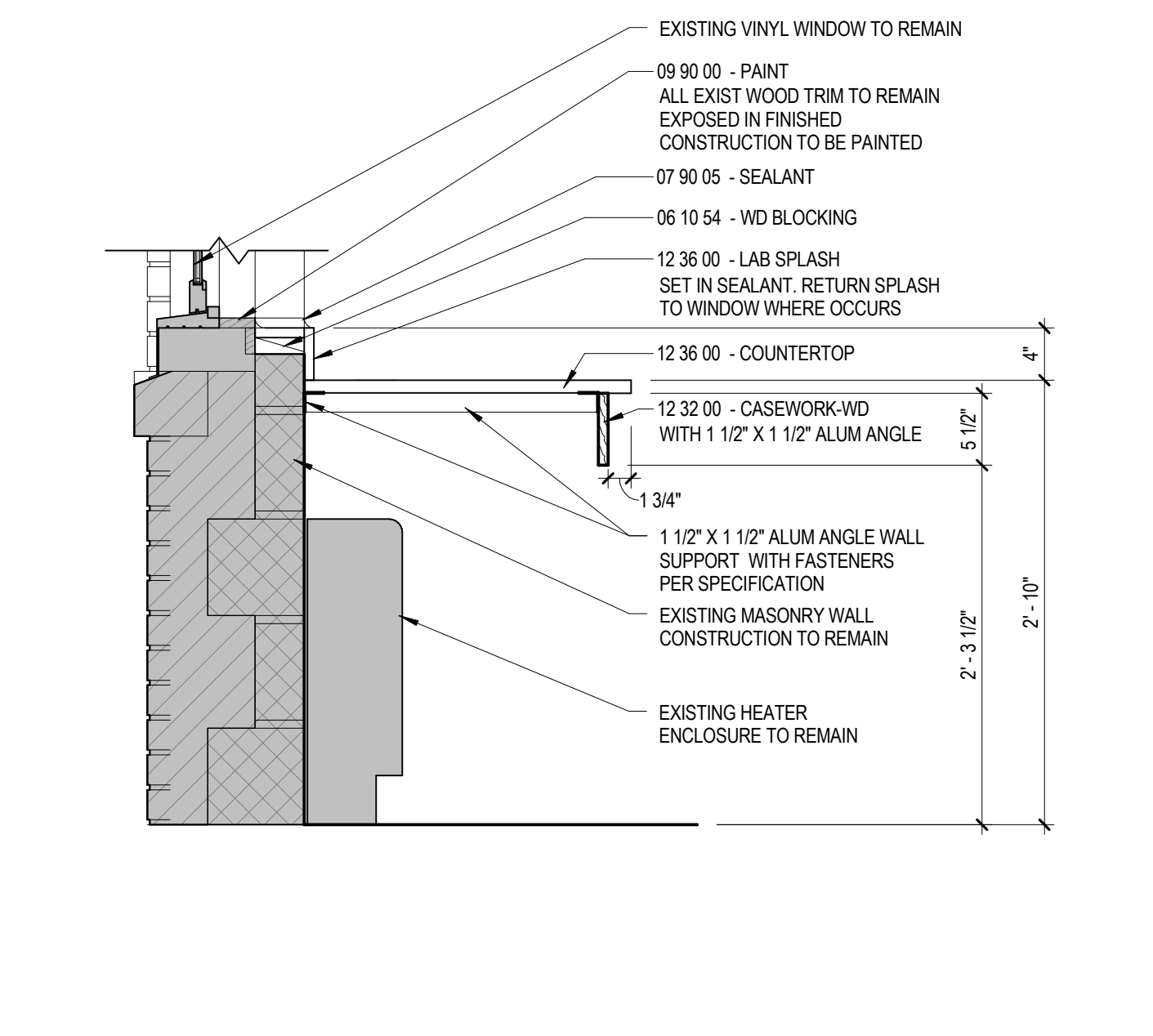
**J3** + BASE CABINET SECTION w SINK (BCSB)  
A7.2 1" = 1'-0"



**J6** ISOMETRIC OF LAB 305 WINDOW SILL  
A7.2



**J8** COUNTER SECTION AT WINDOW (LAB 305)  
A7.2 1" = 1'-0"



**J12** COUNTER SECTION AT WINDOW (PREP ROOM 305A)  
A7.2 1" = 1'-0"

A  
B  
C  
D  
E  
F  
G  
H  
I  
J

UNIVERSITY OF SOUTHERN MAINE

**PAYSON-SMITH HALL  
CHEMISTRY LAB  
RENOVATION**

96 Falmouth Street, Portland, ME, 04101

NO.	DESCRIPTION	DATE
1	Addendum No. 1	01/23/2015
2	Addendum No. 2	01/26/2015

G

CONTENT:

MILLWORK DETAILS

DRAWN BY:	Author
PROJECT NO:	104-00-00
DATE:	01/09/2015
REVISED:	
SCALE:	As indicated

**A7.2**

Project Phase  
**BID DOCUMENTS**  
COPYRIGHT © 2014 BY LAVALLEE BRENSINGER PROFESSIONAL ASSOCIATION. ALL RIGHTS RESERVED. NO REPRODUCTION WITHOUT PERMISSION.

C:\Projects\14-049 USN Payson Lab\_Cameral.Rev.2015\_mme.makant  
1/26/2015 9:42:48 AM