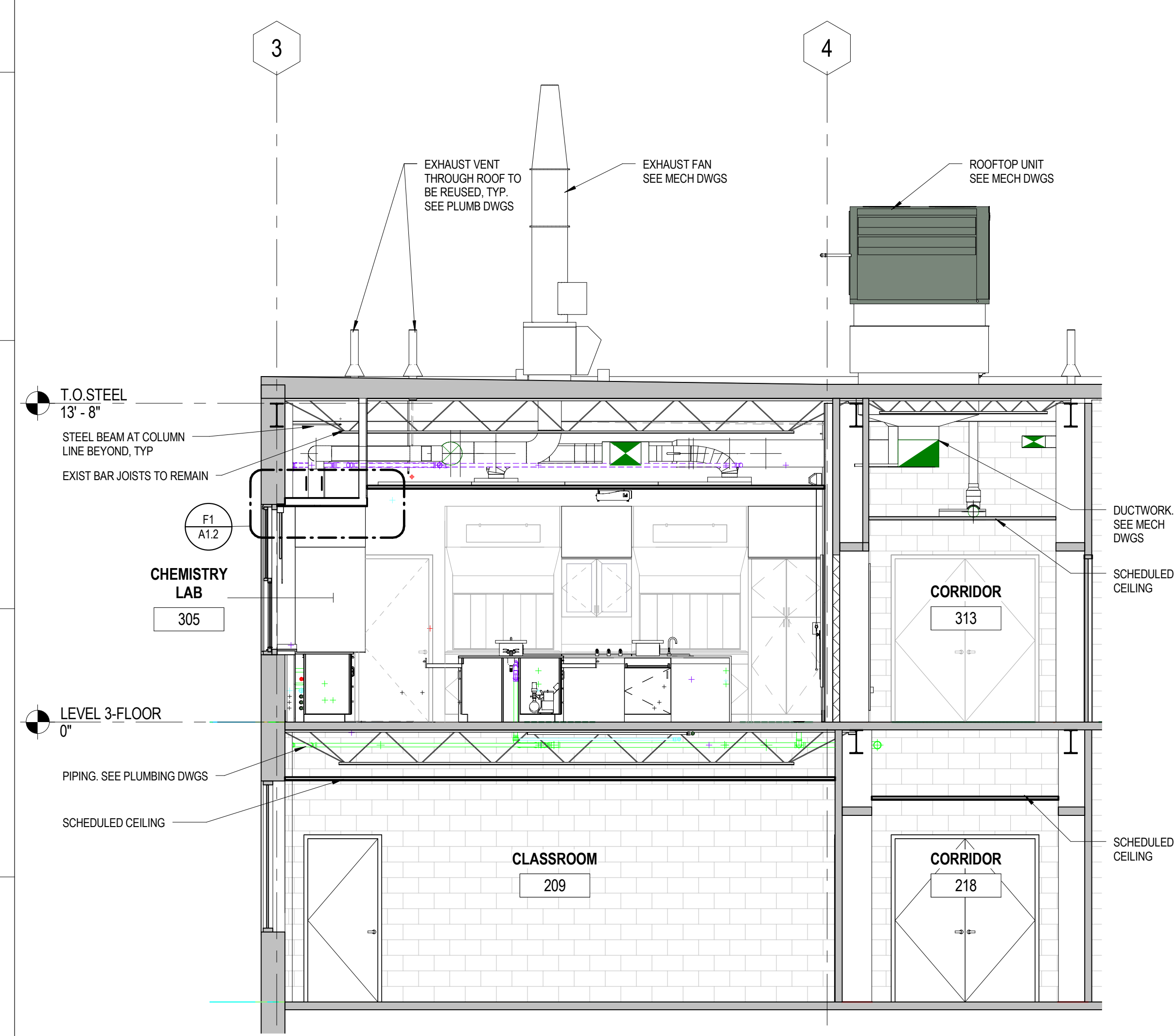
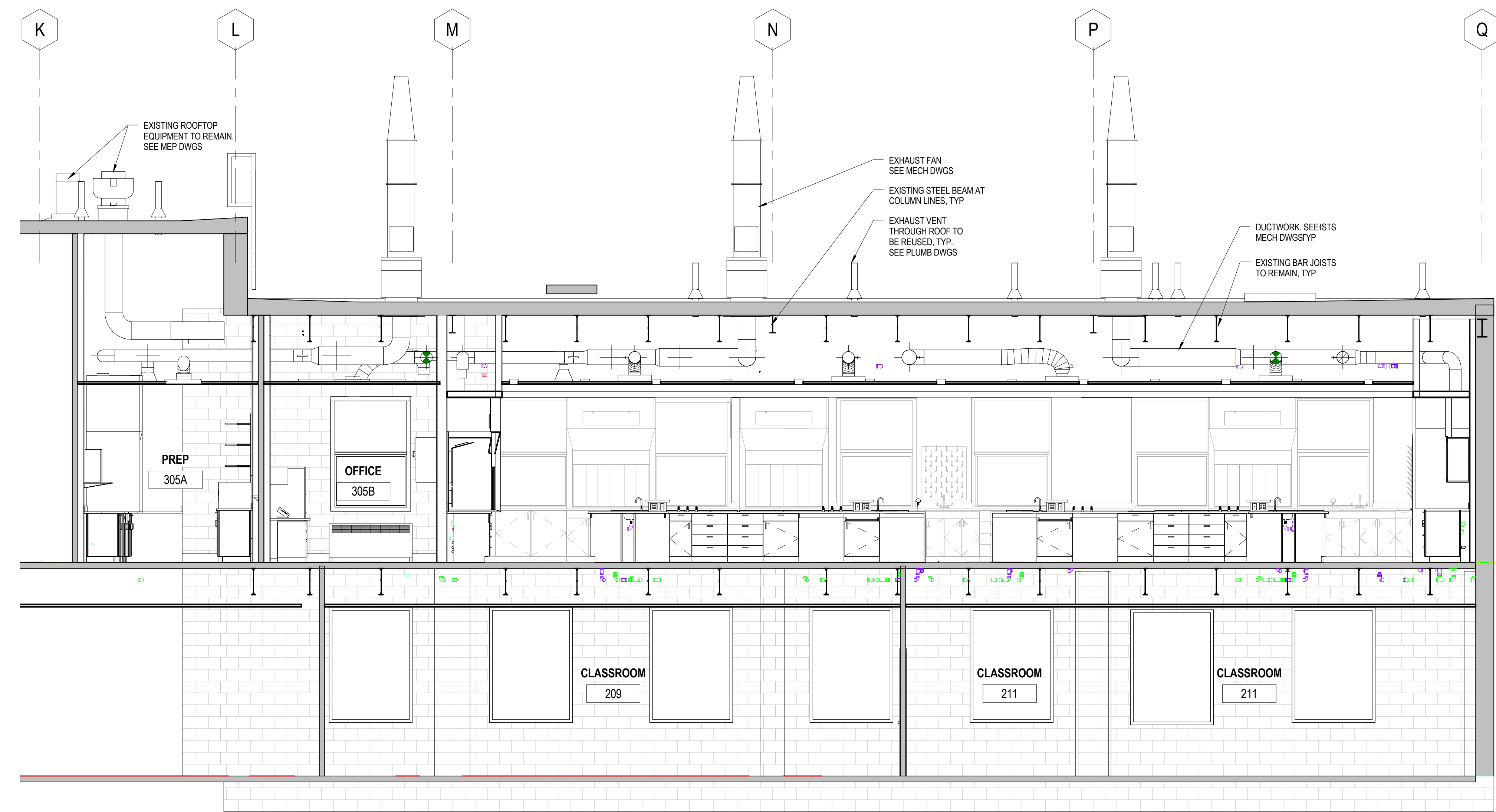


E6 PARTIAL BUILDING SECTION - CORRIDOR 313
 A2.1 1/4" = 1'-0"



J1 PARTIAL BUILDING SECTION - LAB 305 - NORTH/SOUTH
 A2.1 1/4" = 1'-0"



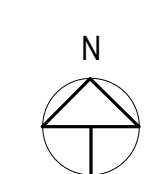
J6 PARTIAL BUILDING SECTION - LAB 305 - EAST/WEST
 A2.1 1/4" = 1'-0"

UNIVERSITY OF SOUTHERN MAINE

**PAYSON-SMITH HALL
 CHEMISTRY LAB
 RENOVATION**

96 Falmouth Street, Portland, ME,
 04101

NO.	DESCRIPTION	DATE



CONTENT:
 PARTIAL BUILDING SECTIONS

DRAWN BY: Author

PROJECT NO: 14-049-00

DATE: 01/09/2015

REVISED:

SCALE: 1/4" = 1'-0"

A2.1

Project Phase
BID DOCUMENTS

COPYRIGHT © 2014 BY LAVALLEE BRENSINGER PROFESSIONAL ASSOCIATION. ALL RIGHTS RESERVED. NO REPRODUCTION WITHOUT PERMISSION.

1/9/2015 2:26:44 PM C:\Projects\14-049 USM Payson Lab_Cameral.Revit.2014_mae_mahant.rvt