

HARRIMAN

AUBURN PORTLAND MANCHESTER

UNIVERSITY OF SOUTHERN MAINE CENTRAL HEAT PLANT UPGRADES

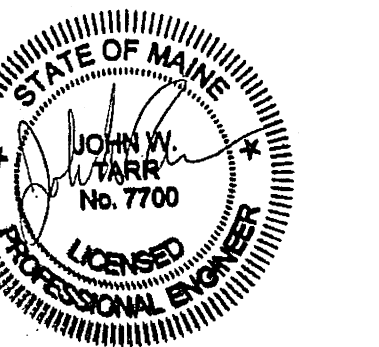
PORTLAND, ME

Harriman Project No. 14411

Key Plan Prog North



Mark	Date	Description
-	09-19-14	PROGRESS REVIEW
-	09-26-14	PROGRESS REVIEW
-	10-03-14	PROGRESS REVIEW
-	10-10-14	FINAL REVIEW
-	10-23-14	100% REVIEW
-	10-31-14	ISSUED FOR BID

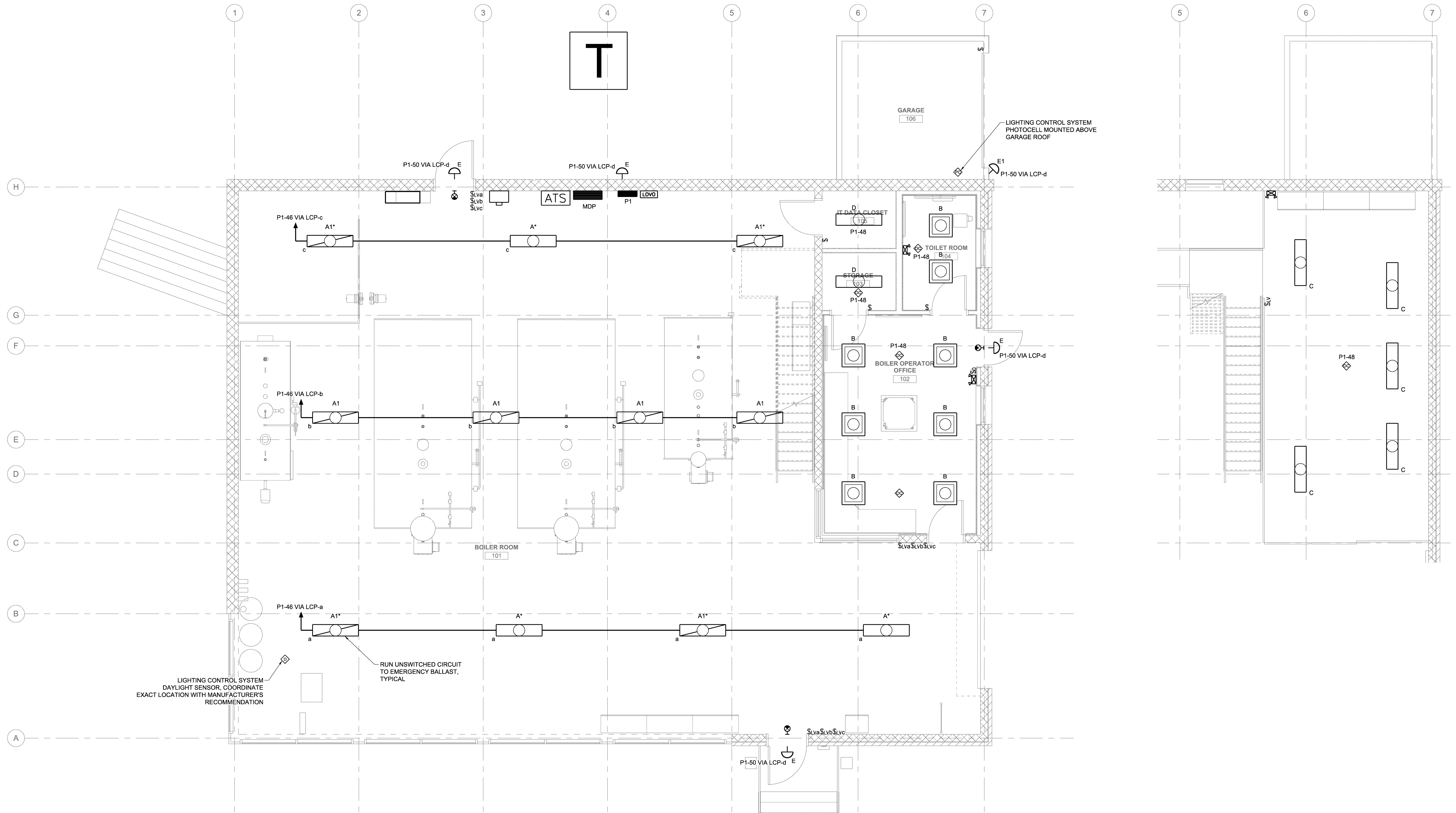


Drawing Scales 1/4" = 1'-0" 0 2' 4' 6'

PA/PE: JWT © 2014 Harriman Associates
Drawn By: BSO

LIGHTING FLOOR PLANS

E10.1



ALTERNATE #2

UNDER ALTERNATE #2 DELETE ALL TYPE A* AND A1* FIXTURES. ALSO DELETE THE LIGHTING CONTROL SYSTEM AND ALL SYSTEM COMPONENTS. INSTALL SIX EXISTING HIGHBAY T5 TROFFERS, THREE IN THE FRONT AISLE AND THREE IN THE BACK AISLE. ALL REUSED FIXTURES SHALL BE RELAMPED WITH NEW T5 LAMPS. REPLACE BALLASTS IN TWO OF THESE EXISTING FIXTURES. IN FOUR OF THESE EXISTING FIXTURES PROVIDE BODINE EMERGENCY BALLASTS TO OPERATE ONE LAMP EACH. PROVIDE NEMA-1 ENCLOSURES MOUNTED ON TOP OF FIXTURES AND MAKE ALL CONNECTIONS AS REQUIRED. LOW VOLTAGE SWITCHES SHALL BE REPLACED WITH THREE-WAY AND FOUR-WAY LINE VOLTAGE SWITCHES PROVIDING THE SAME CONTROL AND FUNCTION. PROVIDE TIME CLOCK AND PHOTOCELL AS DETAILED BELOW FOR EXTERIOR LIGHTING CONTROL. LOCATE PHOTOCELL HIGH ON BUILDING NORTH WALL SO AS TO AVOID INTERFERENCE FROM ARTIFICIAL LIGHTING.

NOTES

1. PROVIDE NUMBER OF CONTACTS AS REQUIRED
2. LIGHTING CONTACTOR - 30A-120V COIL
3. PHOTOCELL - 120V - 2000W - TURN LOCK

LIGHTING CONTROL SYSTEM DAYLIGHT SENSOR. COORDINATE EXACT LOCATION WITH MANUFACTURER'S RECOMMENDATION

RUN UNSWITCHED CIRCUIT TO EMERGENCY BALLAST, TYPICAL

LIGHTING CONTROL SYSTEM PHOTOCELL MOUNTED ABOVE GARAGE ROOF