

ALTERNATE #1:
REMOVE EXISTING FOUNDATION TO 12" BELOW GRADE. DIV. 2 DEMOLITIONS BACKFILL WITH 6" COMPACTED SAND AND 6" LOAM AND SEED - DIV. 31.

BASE BID:
REMOVE EXISTING STACK (DIV. 2 DEMOLITION)

REMOVE EXISTING STAIRS (DIV. 2 DEMOLITION)

SAW-CUT AND REMOVE EXISTING BITUMINOUS PAVEMENT

NEW CONCRETE STAIRS (SEE STRUCTURAL PLANS)

NEW STRUCTURAL CONCRETE SLAB ELEV. 32.0 (FLUSH WITH FLOOR) (SEE STRUCTURAL PLANS)

NEW CONCRETE PAVEMENT

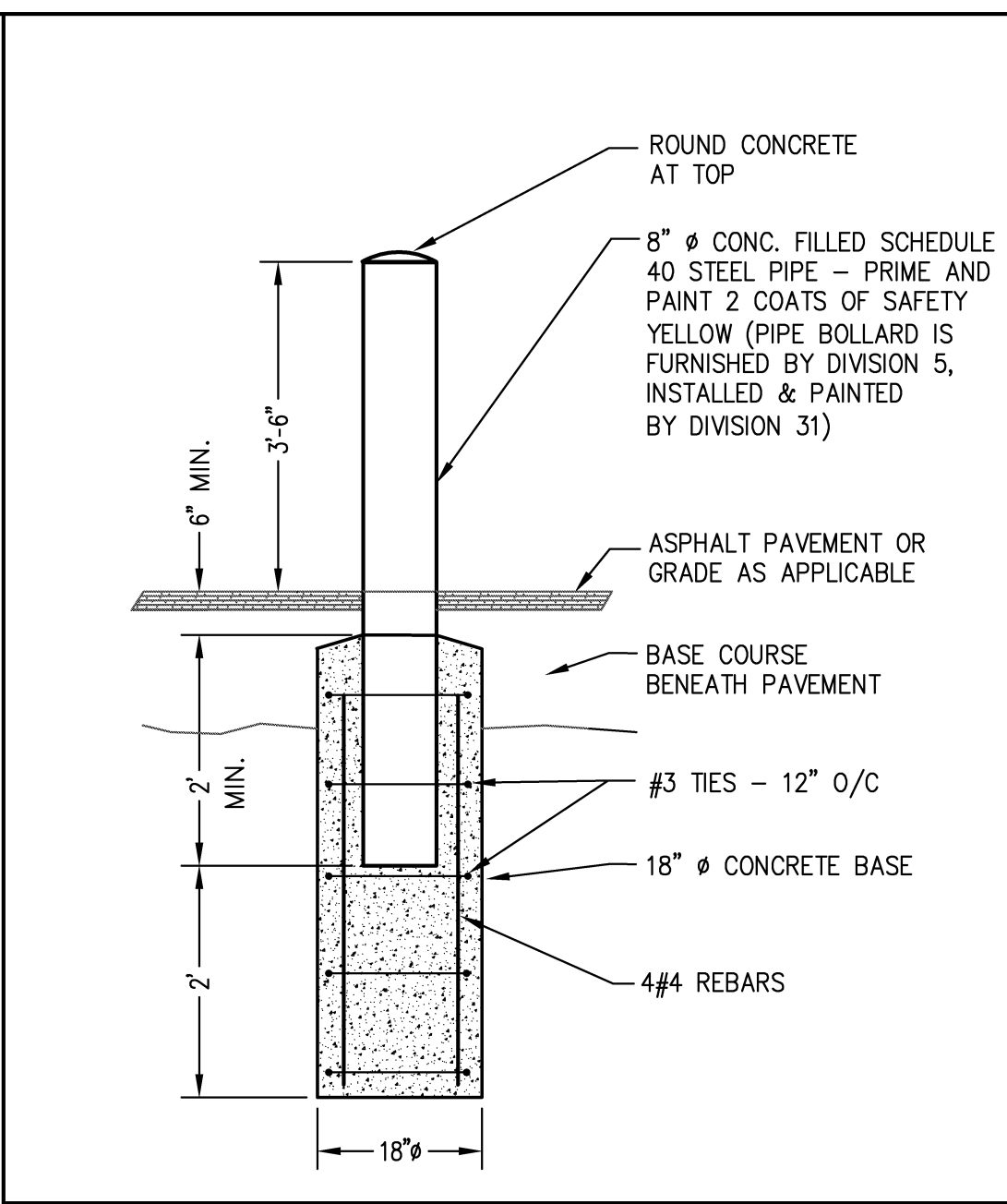
RE-GRADE EXISTING LOADING AREA TO HAVE A MAXIMUM 1% CROSS SLOPE

SAW-CUT AND REMOVE BITUMINOUS PAVEMENT RECONSTRUCT PAVEMENT AND GRAVEL TO NEW GRADE

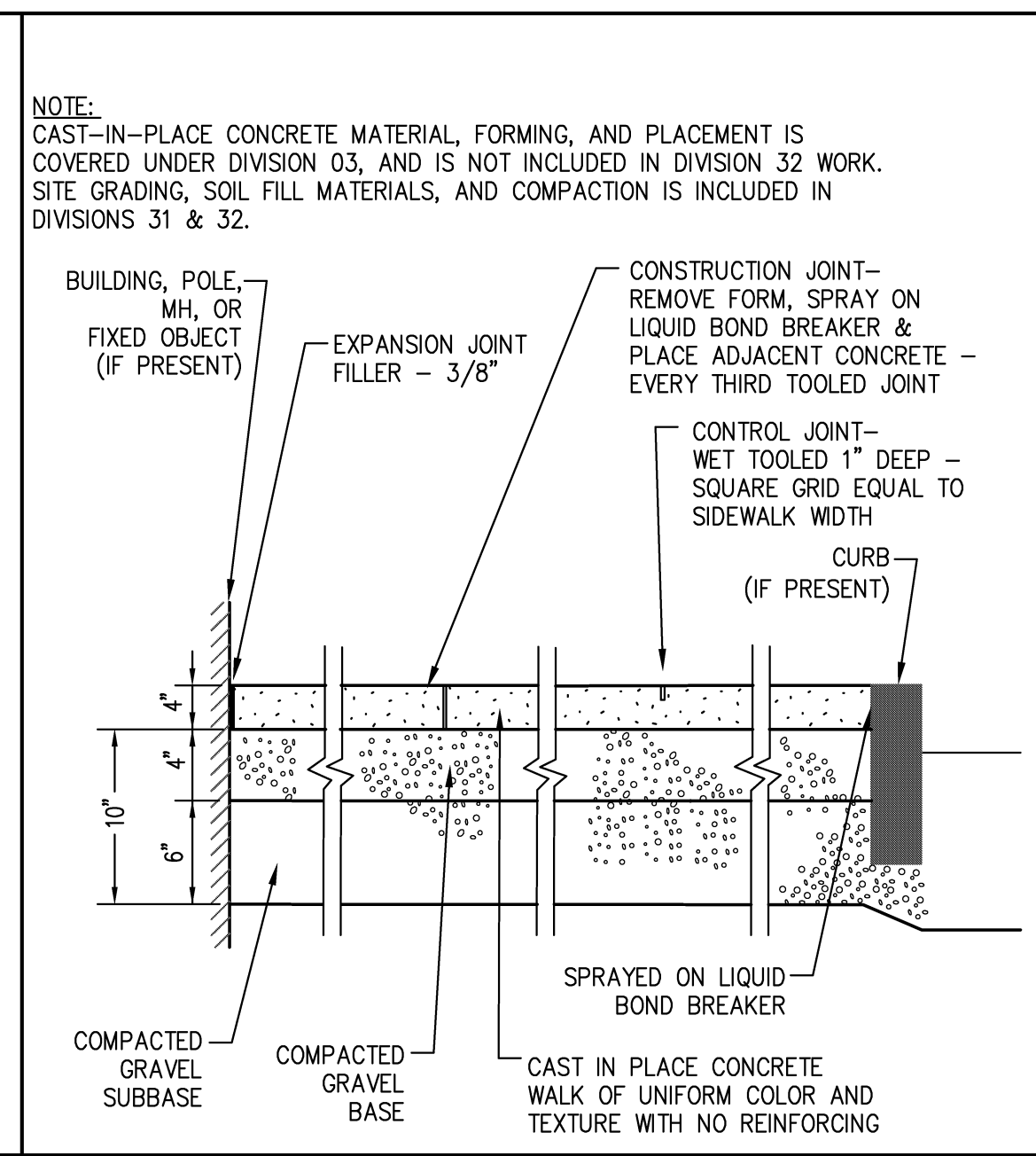
NEW PAINT STRIPING TO MATCH EXISTING

EXISTING	PROPOSED
	BUILDING
	BIT. CONC. PAVEMENT
	CURB
	BOLLARDS
	CONTOUR
	SPOT ELEVATION
	GRADE TO DRAIN
	CATCH BASIN/RAIN INLET
	STEAM MANHOLE
	STORM DRAIN MANHOLE
	SEWER MANHOLE
	UTILITY POLE
	GUY
	LIGHT POLE
	TRANSFORMER PAD
	STORM DRAIN
	UNDERDRAIN
	SANITARY SEWER
	WATER LINE
	IRRIGATION LINE
	GAS, PROPANE
	STEAM LINE
	UNDERGROUND COMMUNICATION LINE
	UNDERGROUND ELECTRICAL
	UNDERGROUND LIGHTING
	AERIAL ELECTRICAL, TELEPHONE, AND CABLE
	PROPERTY LINE
	NOTED (CB/DI)
	NOTED (STMH)
	NOTED (DMH)
	NOTED (SMH)

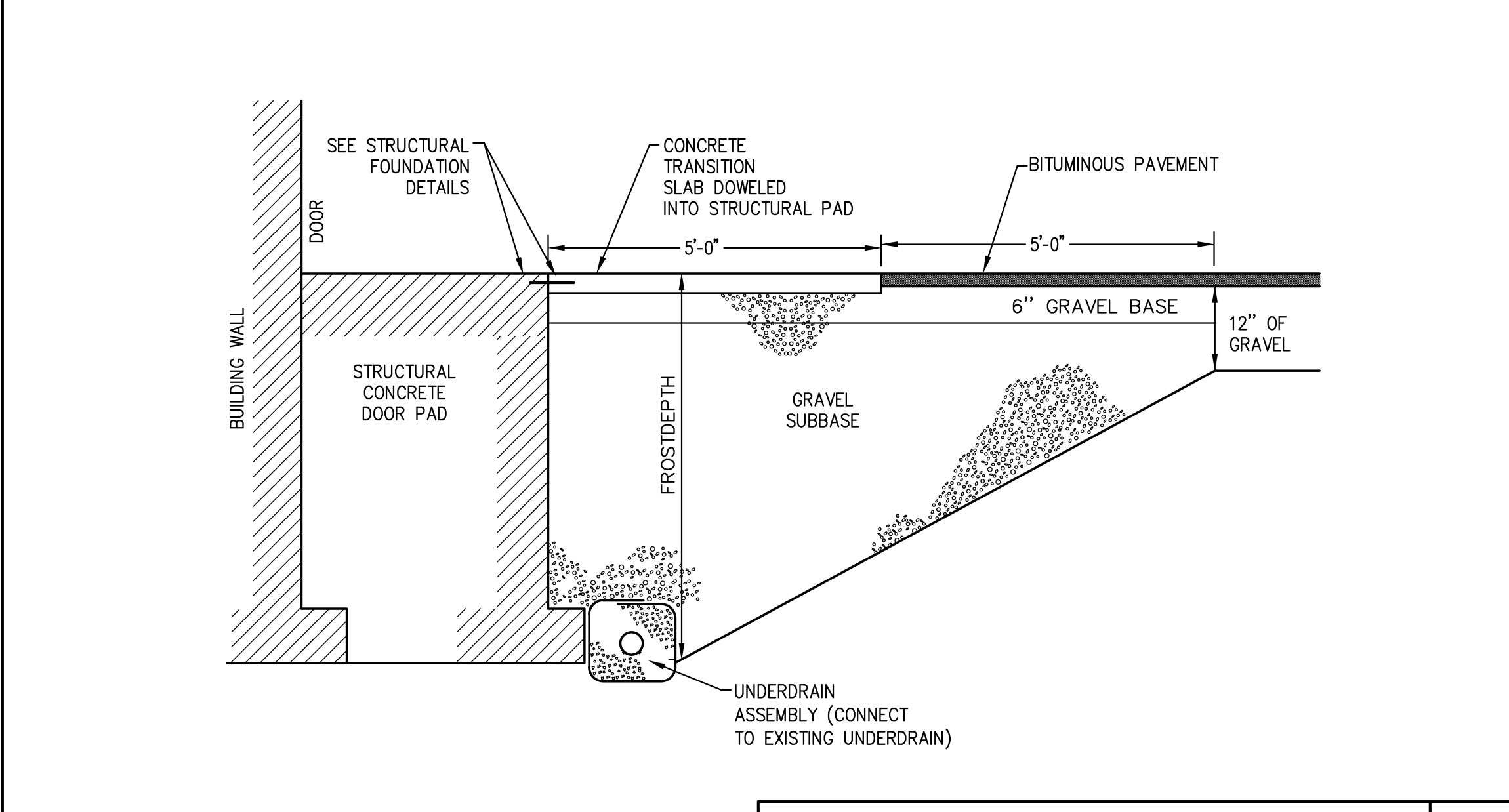
STANDARD SITE LEGEND
NOT TO SCALE **A5**



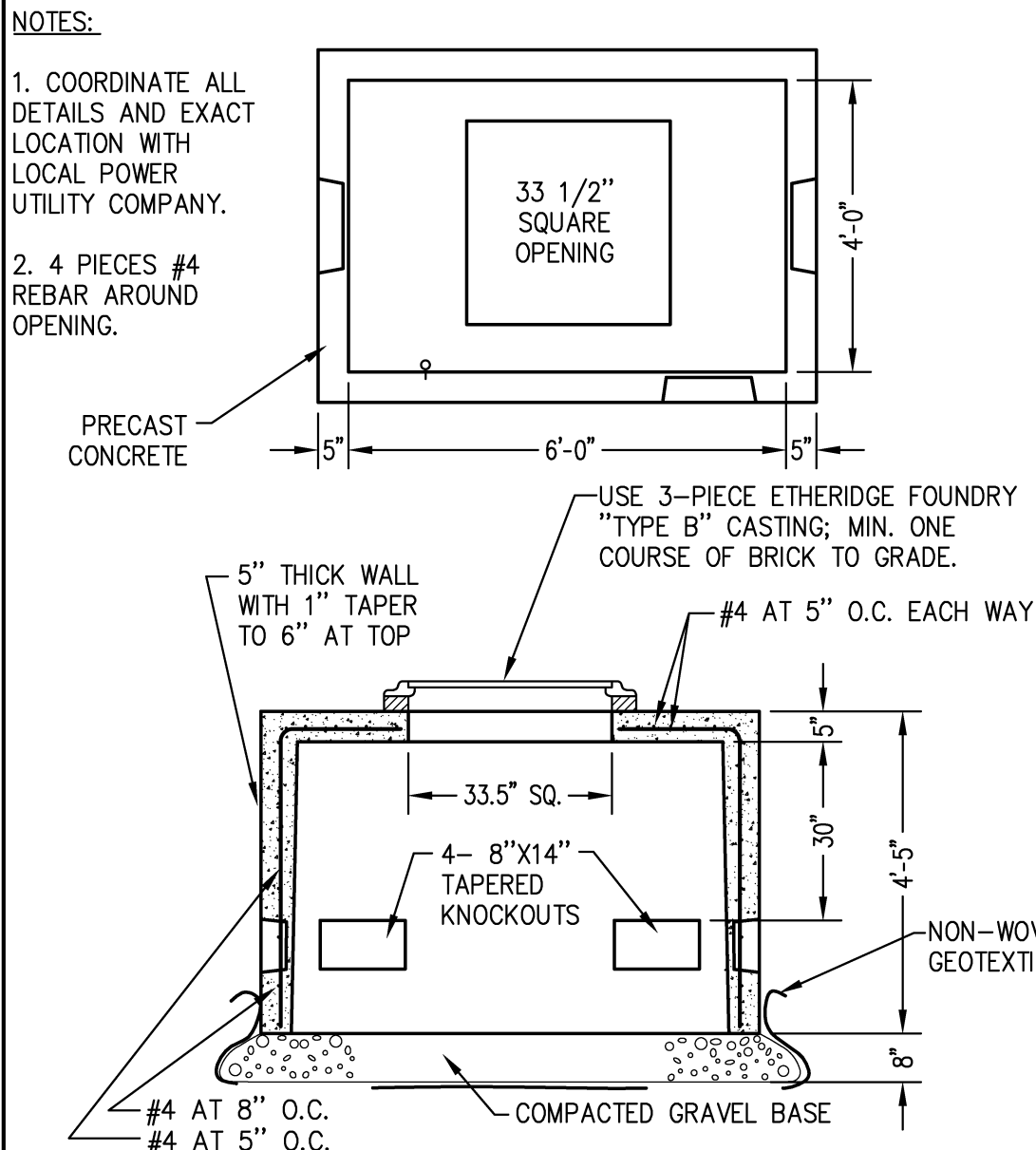
PIPE BOLLARD DETAIL
NOT TO SCALE **D2**



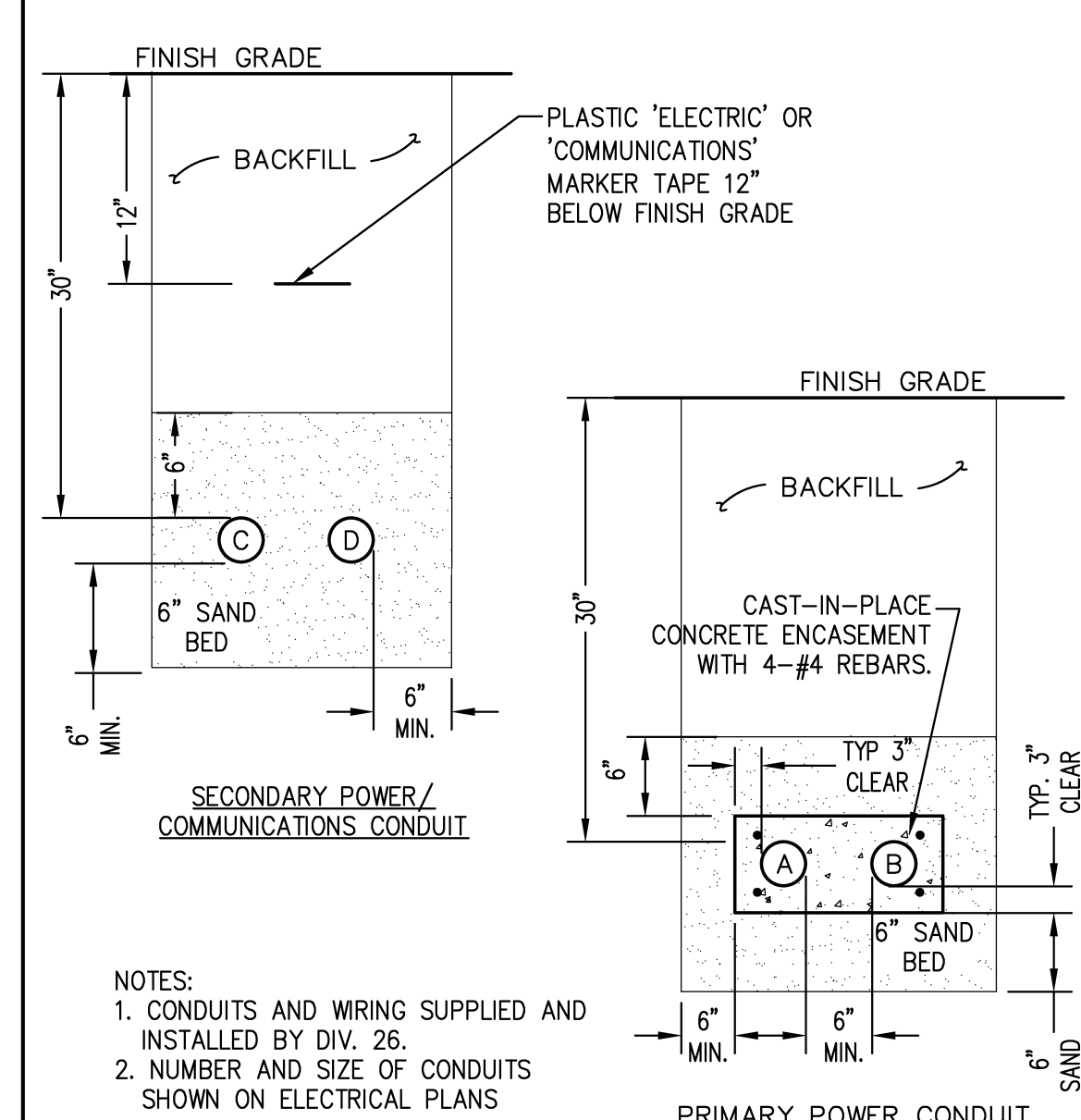
C.I.P. CONCRETE PAVEMENT
NOT TO SCALE **D1**



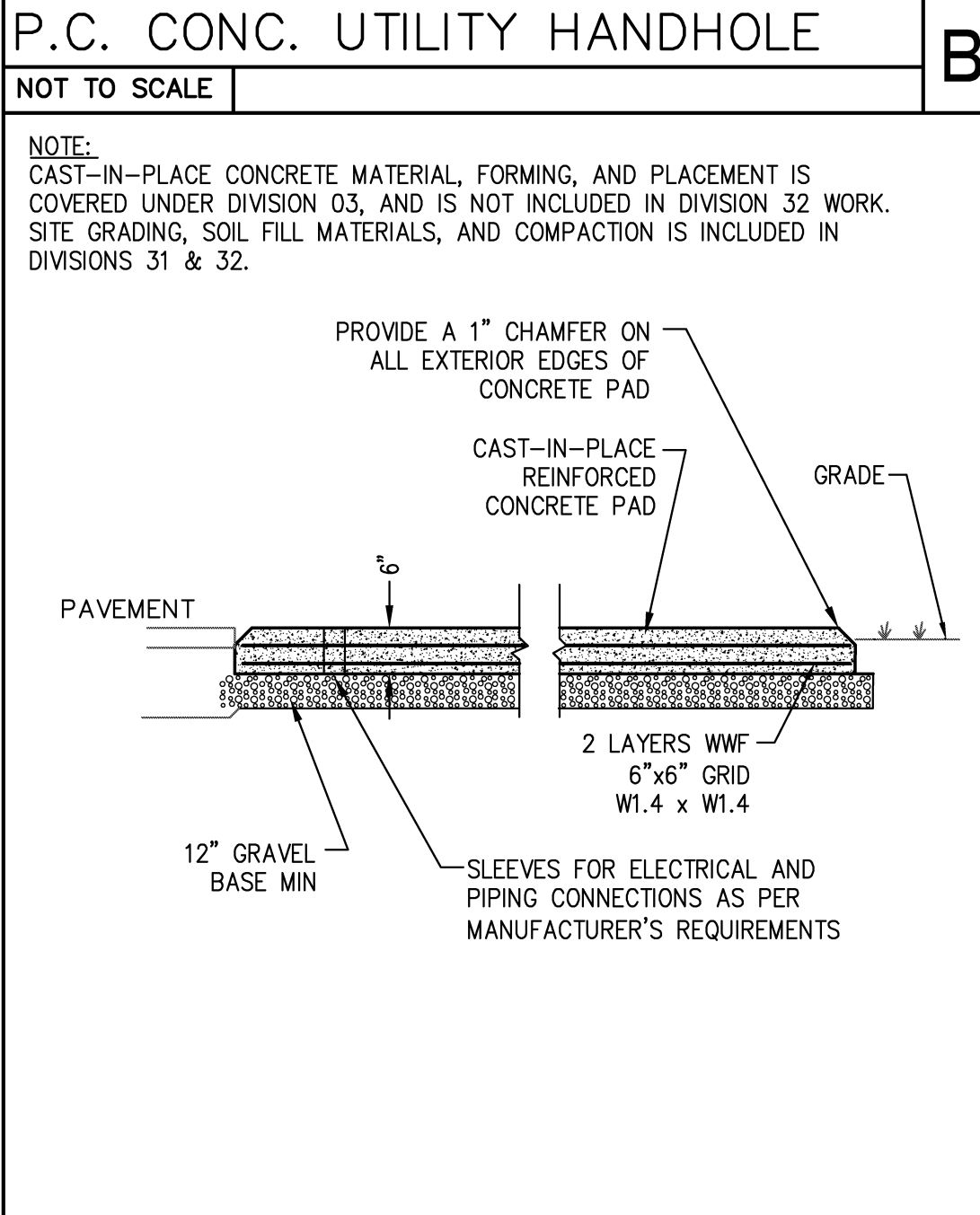
DOORWAY WALK SECTION
NOT TO SCALE **C1**



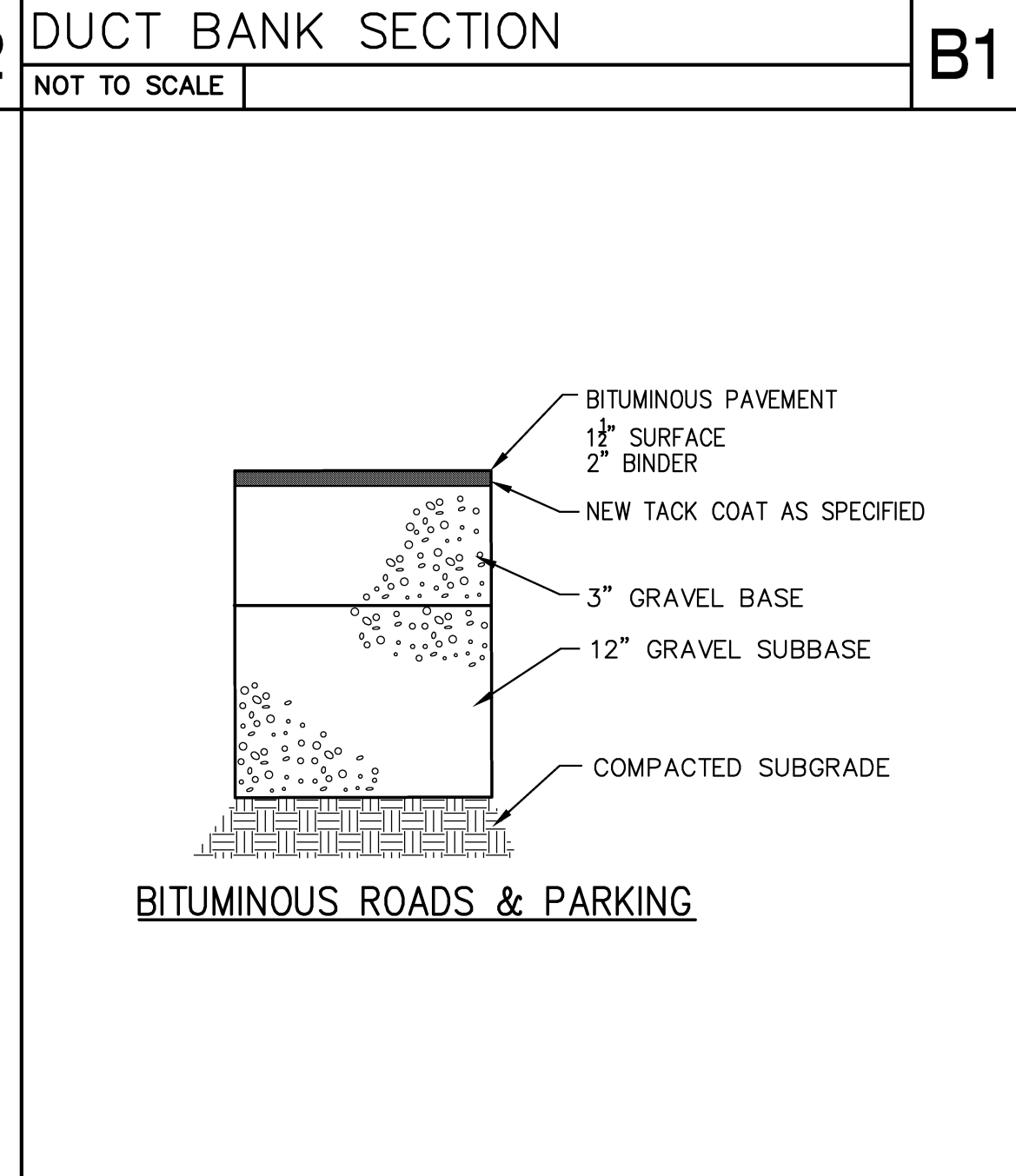
P.C. CONC. UTILITY HANDHOLE
NOT TO SCALE **B2**



DUCT BANK SECTION
NOT TO SCALE **B1**



GENERATOR PAD
NOT TO SCALE **A2**



BITUMINOUS PAVEMENT DETAILS
NOT TO SCALE **A1**

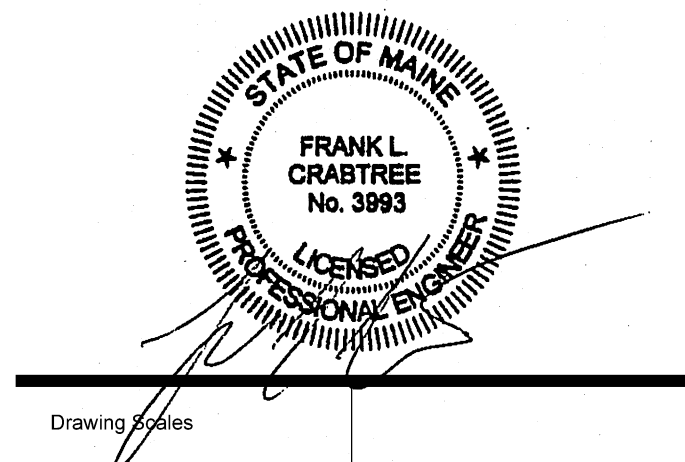


UNIVERSITY OF SOUTHERN MAINE CENTRAL HEAT PLANT UPGRADES

Project Location
Harriman Project No. 14411
Key Plan

NOTES:
1. NO SURVEY HAS BEEN PERFORMED.
2. LOCATIONS ARE APPROXIMATE AND WERE OBTAINED FROM G.I.S. INFORMATION.
3. CONTOURS AND ELEVATIONS ARE APPROXIMATE AND WERE OBTAINED FROM G.I.S. INFORMATION.

Issues and Revisions
Mark Date Description
08-25-14 REVISED SCHEMATIC DESIGN
09-05-14 DESIGN DEVELOPMENT
09-19-14 PROGRESS REVIEW
09-26-14 PROGRESS REVIEW
10-03-14 PROGRESS REVIEW
10-10-14 FINAL REVIEW
10-23-14 100% REVIEW
10-31-14 ISSUED FOR BID



PA/PE: FLC © 2014 Harriman Associates
Drawn By: PLS

SITE OVERVIEW PLAN

C00.1