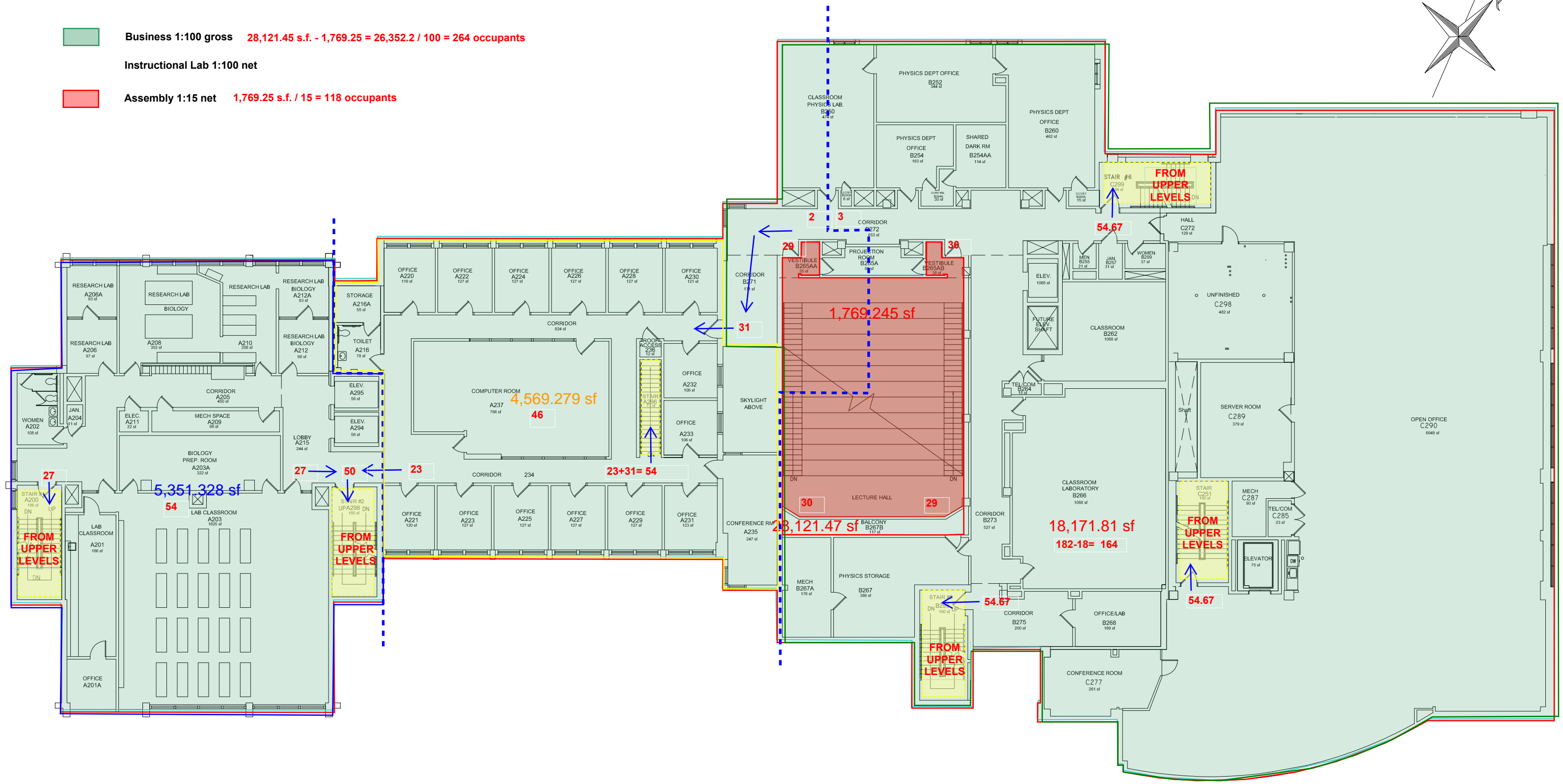


- █ **Business 1:100 gross** $28,121.45 \text{ s.f.} - 1,769.25 = 26,352.2 / 100 = 264 \text{ occupants}$
- Instructional Lab 1:100 net**
- █ **Assembly 1:15 net** $1,769.25 \text{ s.f.} / 15 = 118 \text{ occupants}$



Egress Review 05/01/14

SCIENCE BUILDING (SCI) (6P013)
70 FALMOUTH STREET, PORTLAND CAMPUS
A WING- TOWER / PLANETARIUM, B WING BIO-SCIENCE AND C WING RESEARCH

SECOND FLOOR PLAN
FACILITIES MANAGEMENT UPDATE 11-22-2010