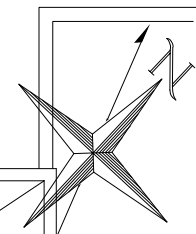
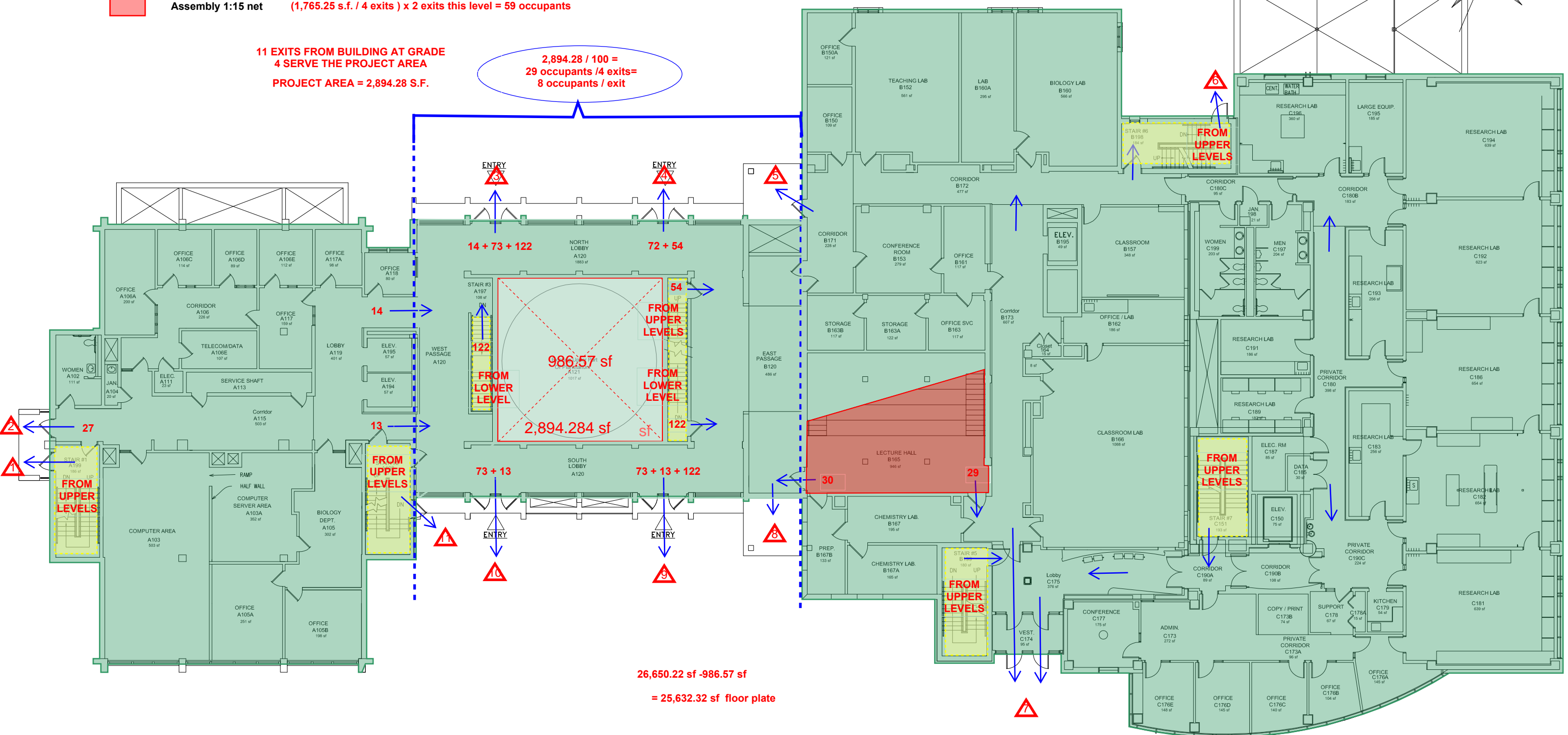


- Business 1:100 gross 25,632.32 sf floor plate - 946 Assembly = 246 occupants
- Instructional Lab 1:100 net
- Assembly 1:15 net (1,765.25 s.f. / 4 exits) x 2 exits this level = 59 occupants



11 EXITS FROM BUILDING AT GRADE
4 SERVE THE PROJECT AREA
PROJECT AREA = 2,894.28 S.F.

2,894.28 / 100 =
29 occupants / 4 exits =
8 occupants / exit



26,650.22 sf - 986.57 sf
= 25,632.32 sf floor plate

Egress Review 05/01/14

SCIENCE BUILDING (SCI)(6P013)
70 FALMOUTH STREET, PORTLAND CAMPUS
A WING- TOWER / PLANETARIUM, B WING BIO-SCIENCE AND C WING RESEARCH

FIRST FLOOR PLAN
FACILITIES MANAGEMENT UPDATE 11-22-2010