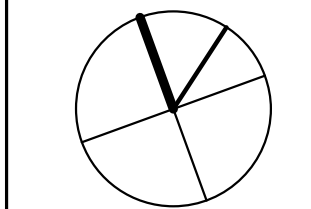




49 DARTMOUTH STREET
PORTLAND, MAINE 04101
207-775-1059
www.pdtarchts.com

**COPYRIGHT 2014
PDT Architects**
Reuse or reproduction of the
contents of this document is not
permitted without written
permission of PDT Architects.

SCIENCE BUILDING LOBBY RENOVATION 2014-007
University of Southern Maine



JOB NO.
14052

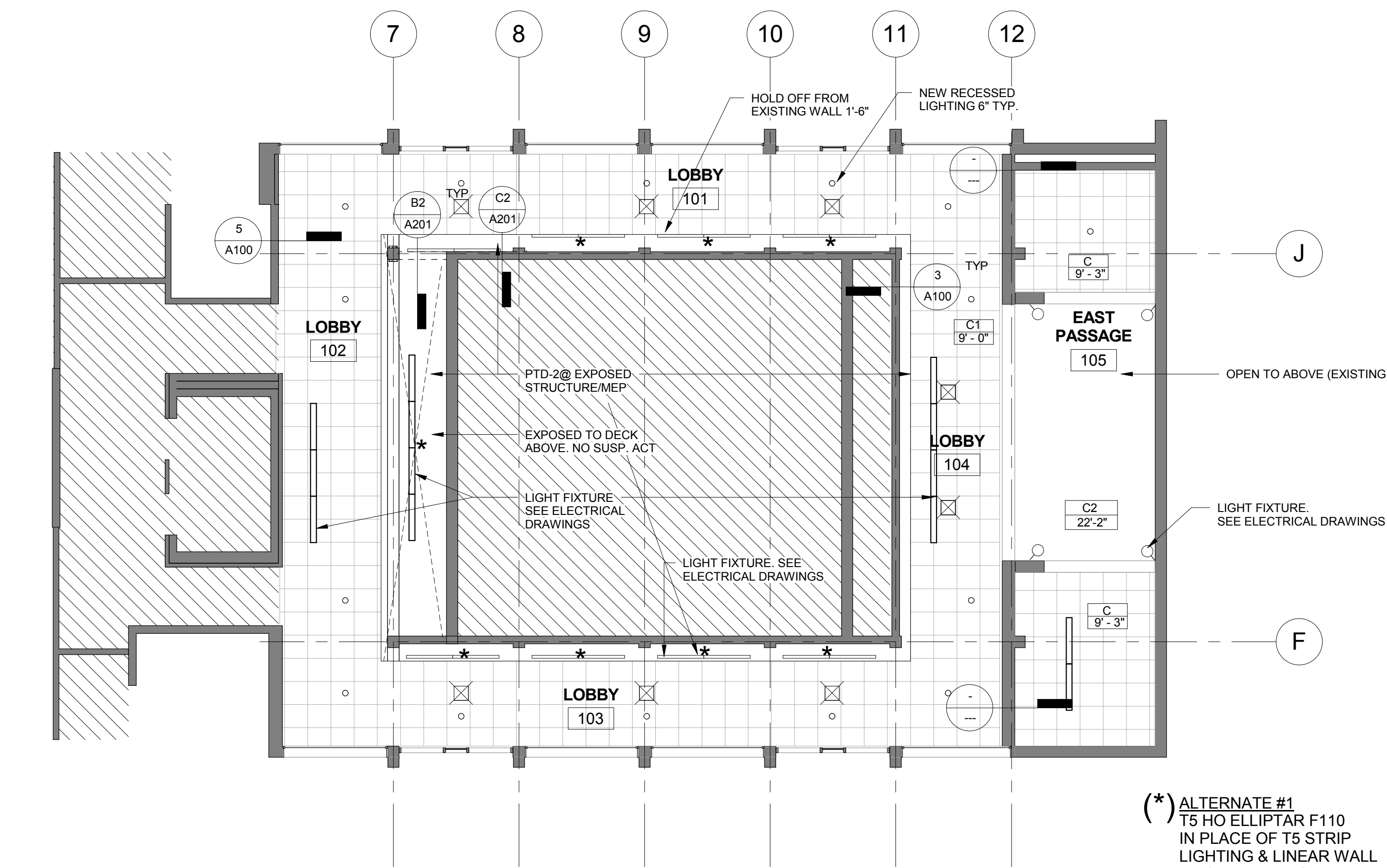
DRWN. CHK
AHC

SCALE:
As indicated

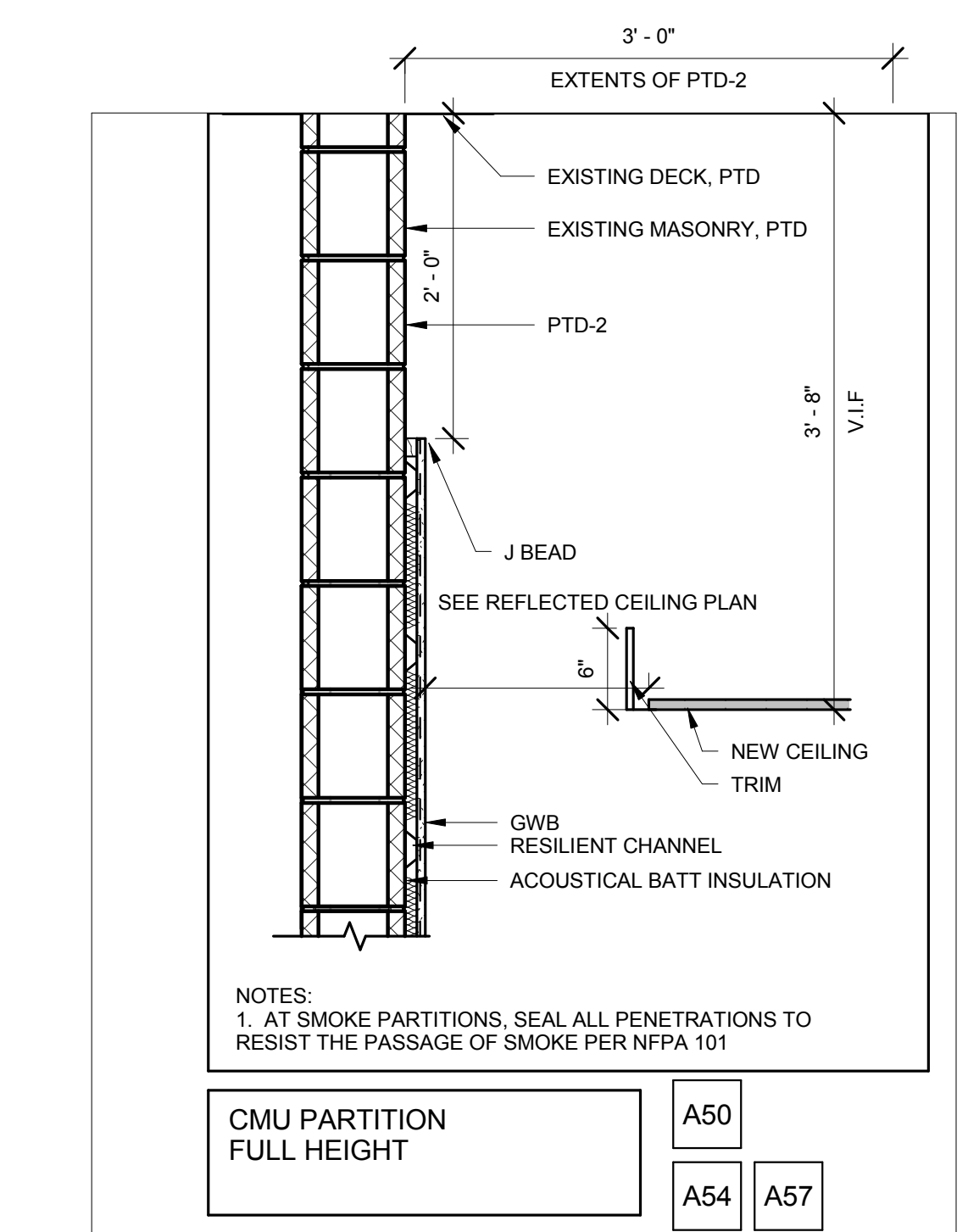
ISSUE STATUS
CONSTRUCTION
ISSUE DATE
05-30-2014

TITLE
NEW RCP AND
FLOOR PLAN

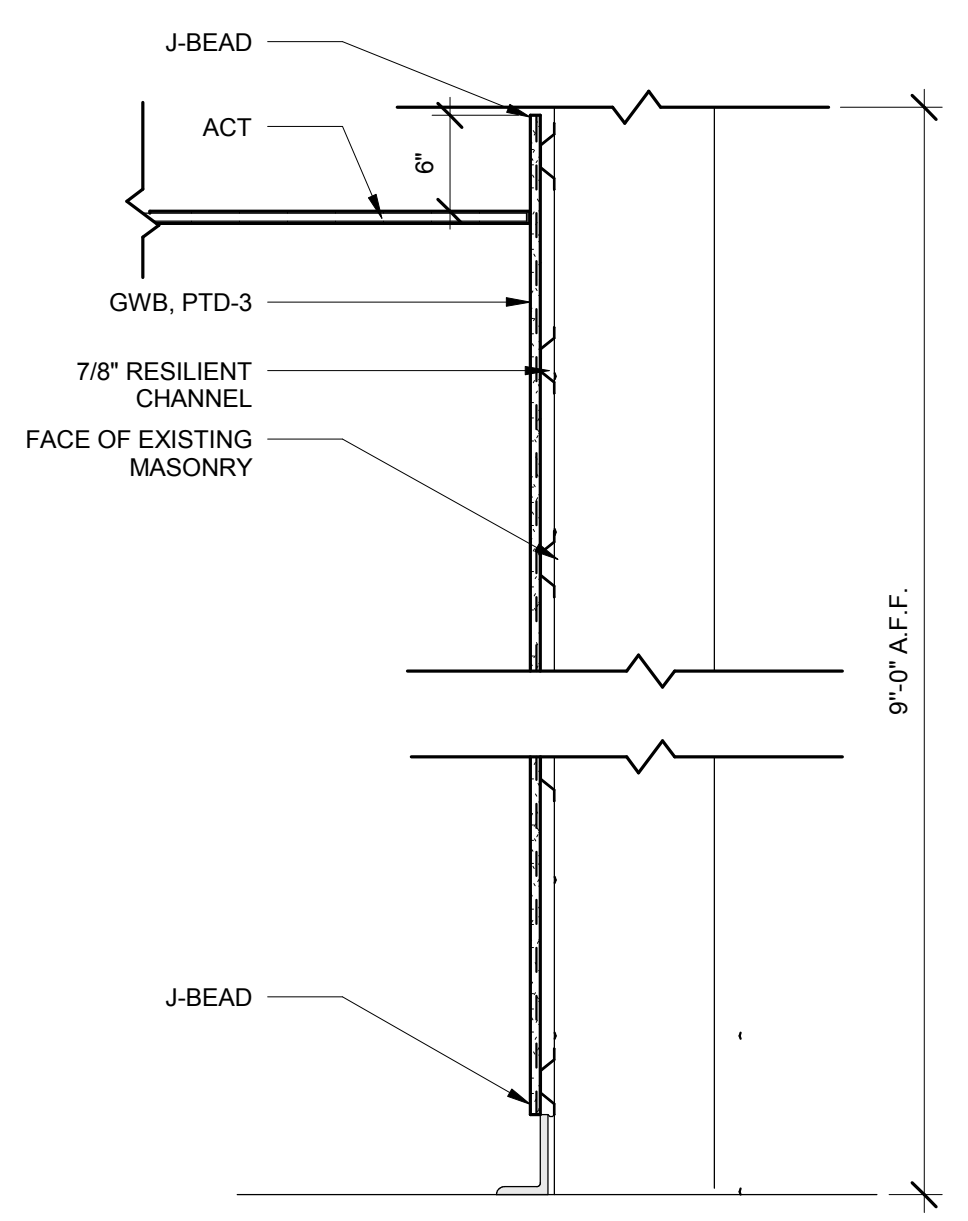
SHEET
A100



2 FIRST FLOOR CEILING PLAN
1/8" = 1'-0"

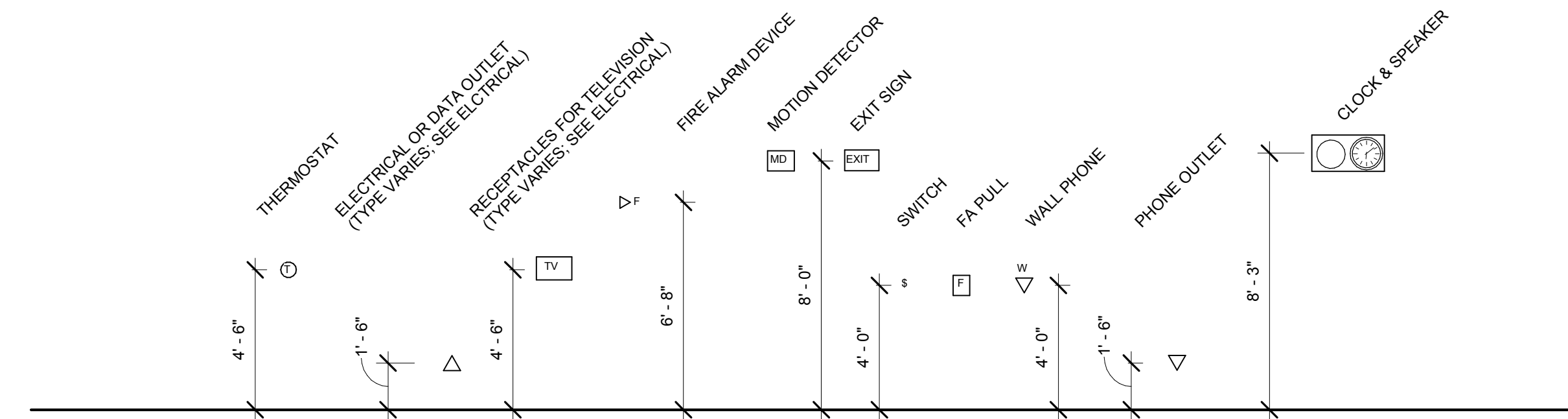


3 WALL SECTION AT LOBBY CORE
1" = 1'-0"

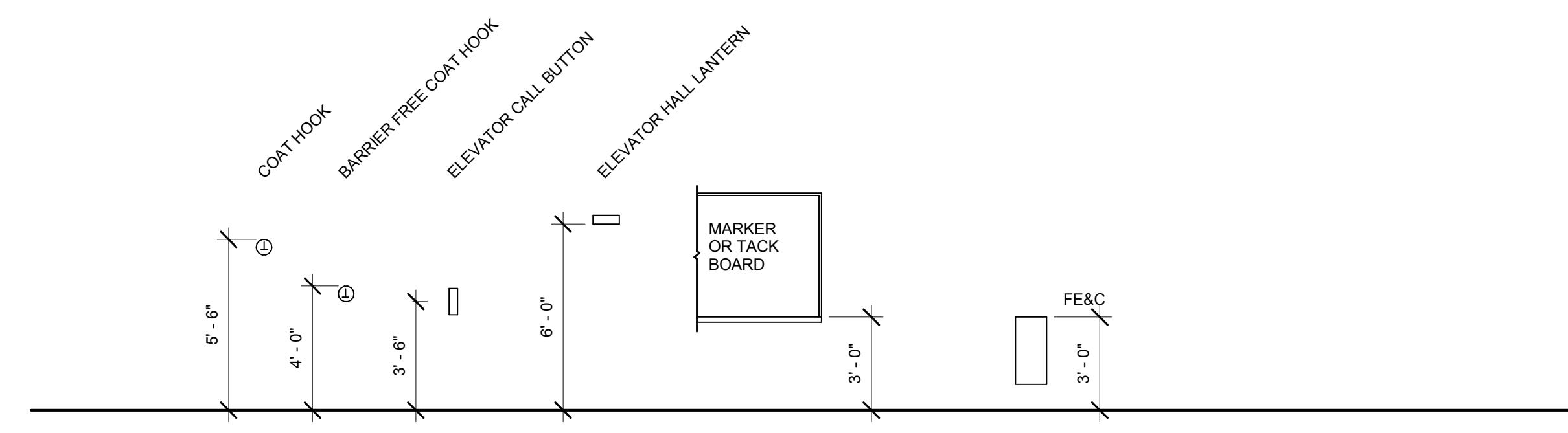


5 WALL SECTION AT ALARM PANELS
1" = 1'-0"

(***ALTERNATE #1**
T5 HO ELLIPTICAL F110
IN PLACE OF T5 STRIP
LIGHTING & LINEAR WALL
WASH FIXTURES WHERE
INDICATED



1 FIRST FLOOR PLAN
1/8" = 1'-0"



4 MOUNTING HEIGHTS
1/4" = 1'-0"

MOUNTING HEIGHT GENERAL NOTES:
1. SEE MECHANICAL, ELECTRICAL, AND TECHNOLOGY DRAWINGS FOR SPECIFIC FIXTURE OR DEVICE LOCATION AND DESIGNATION AND ADDITIONAL MOUNTING REQUIREMENTS.
2. COORDINATE LOCATION OF ALL RECEPTACLES, FIXTURES OR DEVICES WITH INTERIOR ELEVATIONS AND CASEWORK LOCATIONS.
3. REFER TO MANUFACTURER'S INSTRUCTIONS FOR SPECIFIC ADA REQUIRED MOUNTING HEIGHTS AS APPLICABLE.

GENERAL PATCHING AND REPAIRING NOTES

- Where new construction either infills or abuts existing construction, the finished faces shall align, and the surfaces shall be finished to match.
- Patch and level existing floors to receive new finishes as indicated in the room finish schedule.
- After removal of building components, any resulting holes shall be patched.
- Maintain existing fire- or smoke-ratings as indicated.
- Patches shall be flush with adjacent surfaces and finished to match.
- After demolition, provide interior masonry cleaning to remove all remnants of paint, drywall, and other miscellaneous items from the existing brick veneer.

