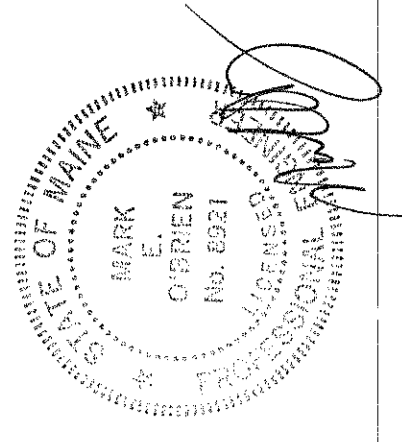




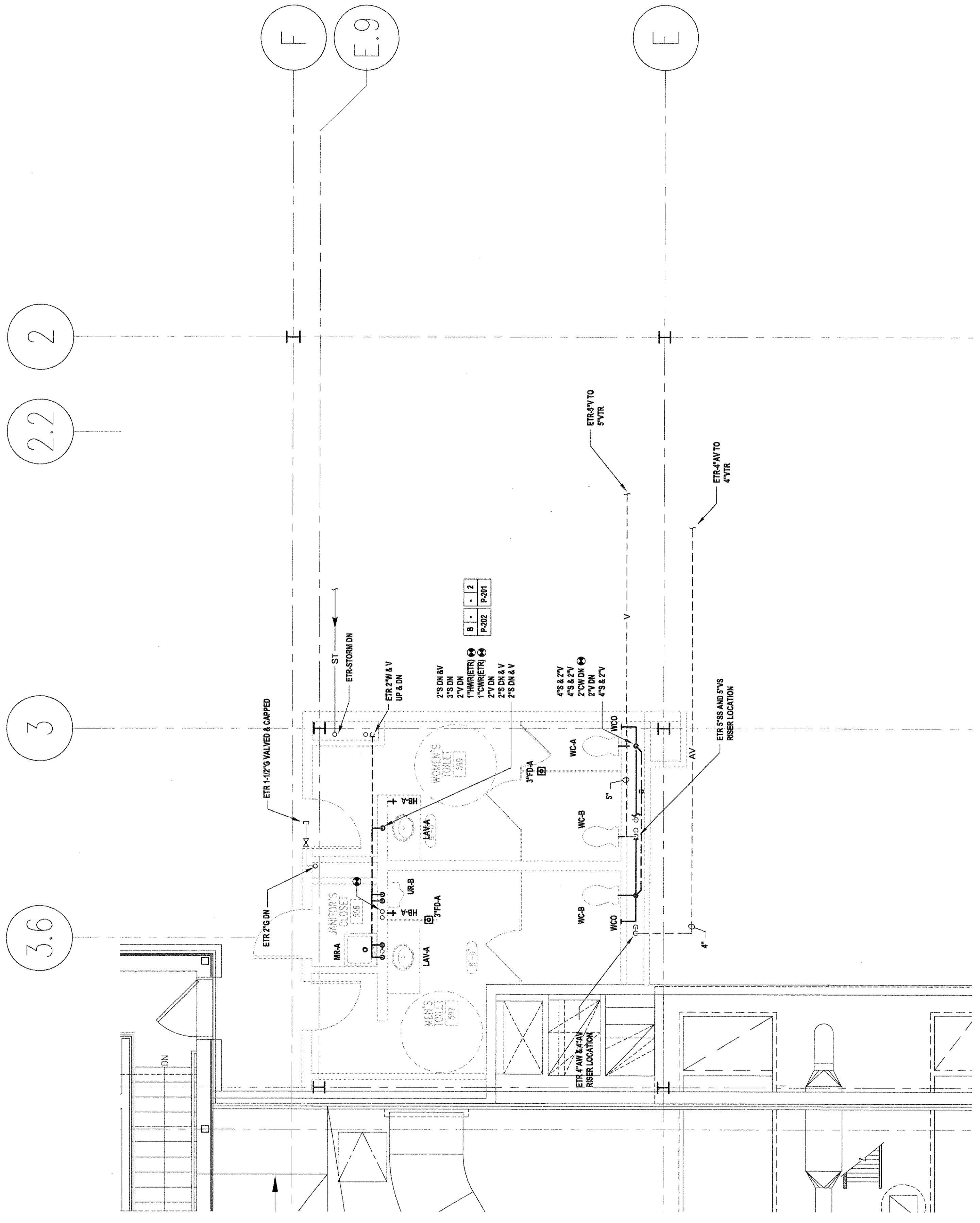
USM
 BIO-SCIENCE BUILDING TOILET ROOM FIT-UP
 SECOND, THIRD AND FIFTH FLOORS
 70 FALMOUTH STREET, PORTLAND, ME



10/10/2013	ISSUED FOR CONSTRUCTION
MARK DATE	DESCRIPTION:
ISSUE LOG	
△	= CLOUDED CHANGE

SCALE	1/4"=1'-0"
DRAWN BY	JMS
CHECKED BY	RM
PROJECT/ENGINEER	DJO
PROD. MGR.	RM
JOB NO.	11082.04
© SYMMES, MAINI & MCKEE ASSOCIATES, INC. 2012	

**PLUMBING
 FIFTH FLOOR PLAN**



B3 FIFTH FLOOR PLAN
 1/4"=1'-0"