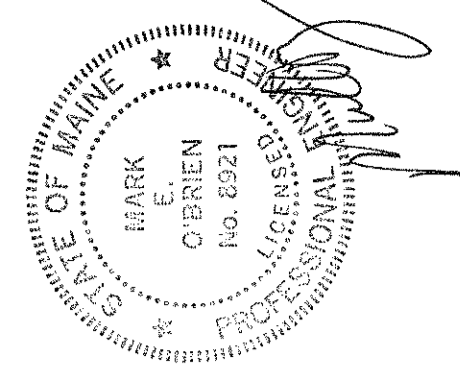


SYMMES MAINI & MCKEE ASSOCIATES
 1000 Massachusetts Avenue
 Cambridge, Massachusetts 02138
 P: 617.547.5400 F: 617.648.4920



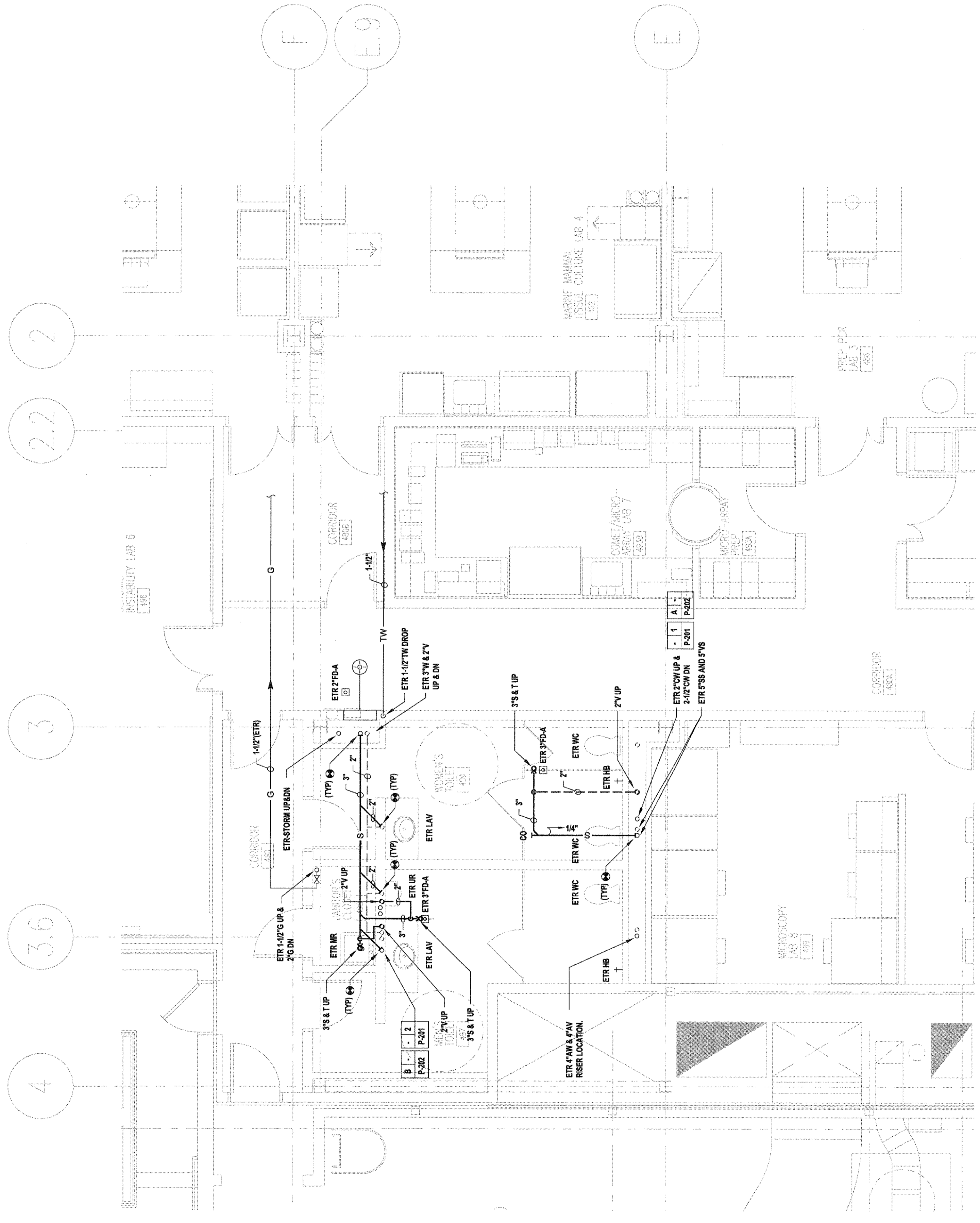
USM
 BIO-SCIENCE BUILDING TOILET ROOM FIT-UP
 SECOND, THIRD AND FIFTH FLOORS
 70 FALMOUTH STREET, PORTLAND, ME



MARK DATE	ISSUED FOR CONSTRUCTION
10.10.2013	ISSUED FOR CONSTRUCTION
	DESCRIPTION
	ISSUE LOG
	△ = CLOUDED CHANGE

SCALE	1/4"=1'-0"
DRAWN BY	JMS
CHECKED BY	RBN
PRODUCED BY	DJD
PROJ. MGR.	RCH
JOB NO.	11082.04
© SYMMES, MAINI & MCKEE ASSOCIATES, INC. 2012	

PLUMBING
 FOURTH FLOOR PLAN



B3 FOURTH FLOOR PLAN
 1/4"=1'-0"