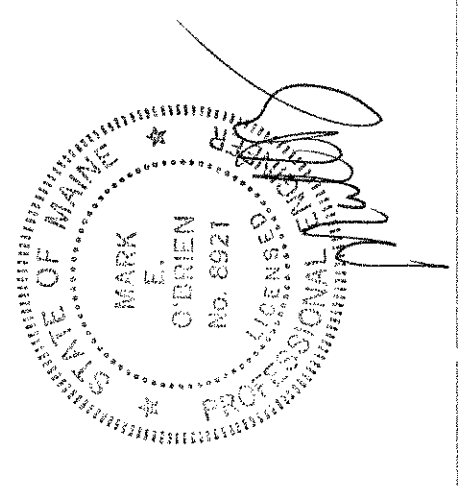


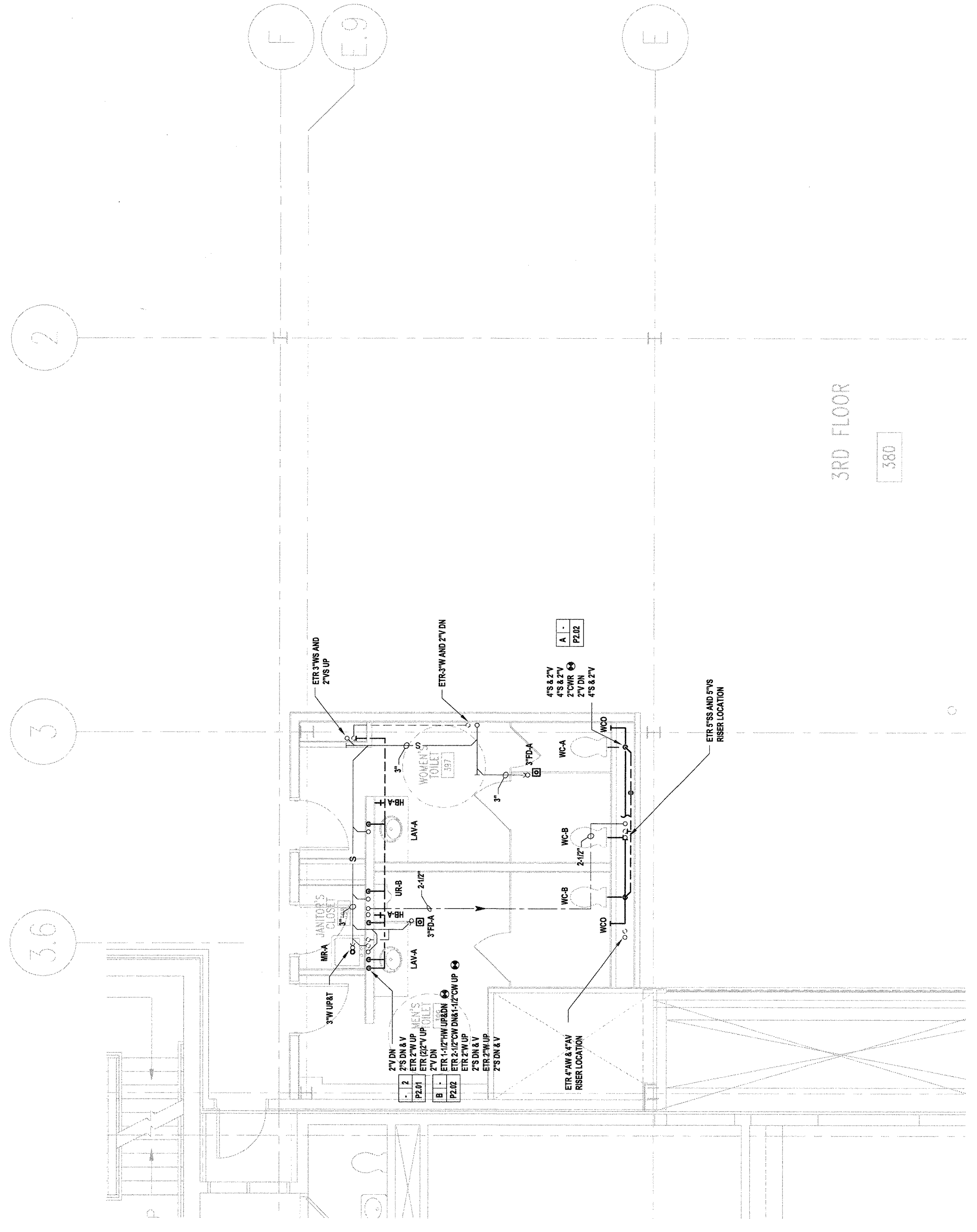
USM
 BIO-SCIENCE BUILDING TOILET ROOM FIT-UP
 SECOND, THIRD AND FIFTH FLOORS
 70 FALMOUTH STREET, PORTLAND, ME



10/10/2013	ISSUED FOR CONSTRUCTION
MARK DATE	DESCRIPTION
ISSUE LOG	
△	= CLOUDED CHANGE

SCALE	1/4"=1'-0"
DRAWN BY	JMS
CHECK BY	FRM
PROD. ARCH/ENGR.	DJO
PROD. MGR.	RCH
JOB NO.	11092.04
© SYMMES, MAINI & MCKEE ASSOCIATES, INC. 2012	

**PLUMBING
 THIRD FLOOR PLAN**



B3 THIRD FLOOR PLAN
1/4"=1'-0"