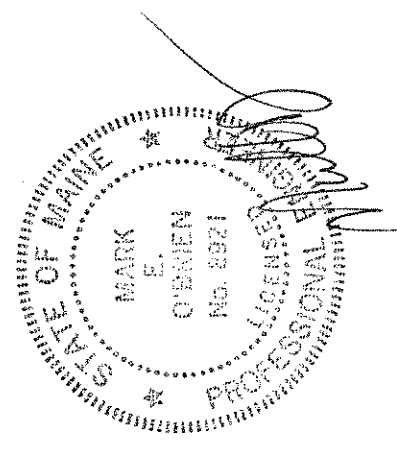




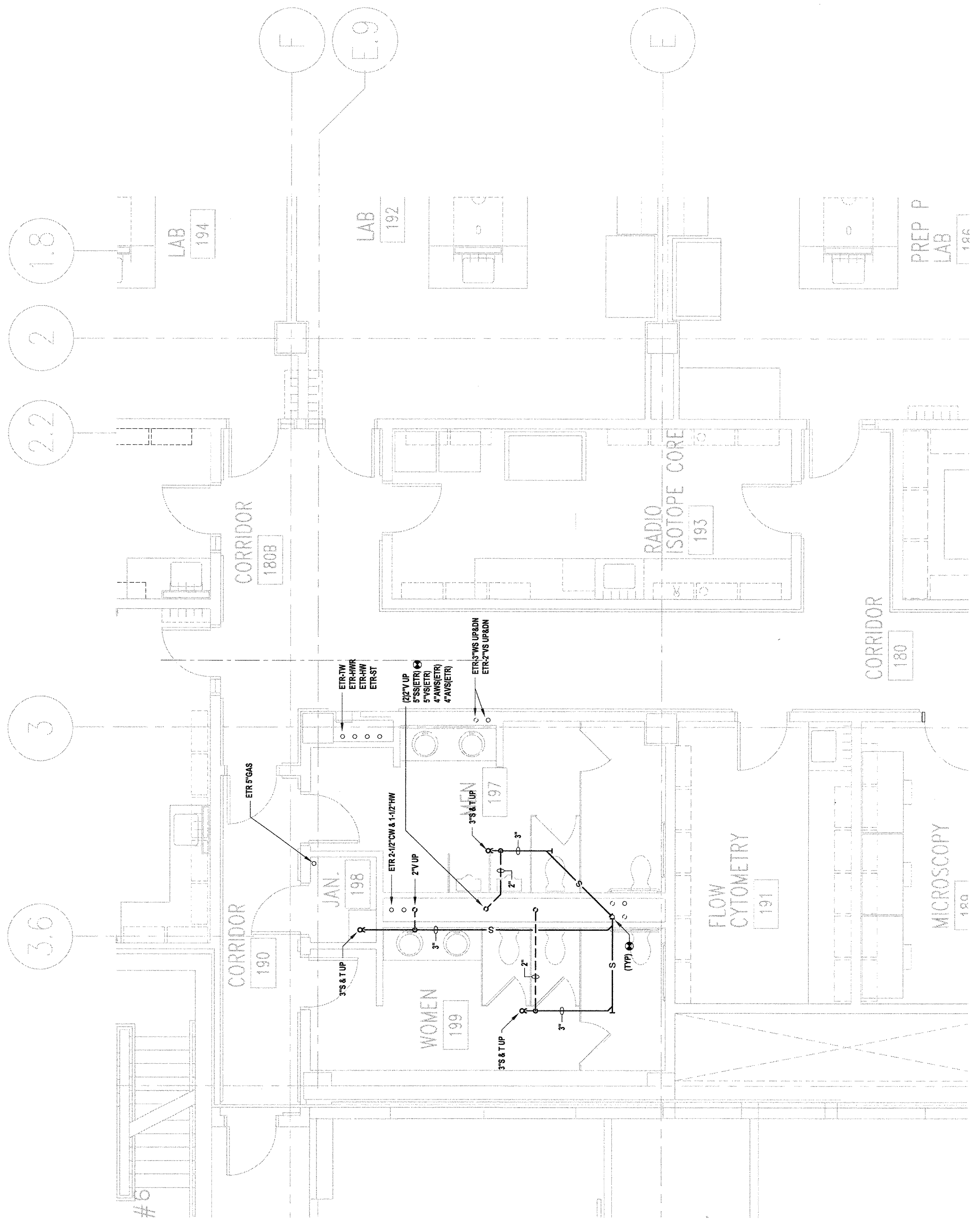
USM
 BIO-SCIENCE BUILDING TOILET ROOM FIT-UP
 SECOND, THIRD AND FIFTH FLOORS
 70 FALMOUTH STREET, PORTLAND, ME



10/10/2013	ISSUED FOR CONSTRUCTION
MARK DATE	DESCRIPTION
ISSUE LOG	
△	CHANGED CHANGE

SCALE	1/4"=1'-0"
DRAWN BY	JMS
CHECKED BY	RBM
PROJ. ARCHENGR.	DJO
PROJ. MGR.	RCH
JOB NO.	11882.04
© SYMMES, MAINI & MCKEE ASSOCIATES, INC. 2012	

**PLUMBING
 FIRST FLOOR PLAN**



B3 FIRST FLOOR PLAN
 TOILET ROOM FIT-UP

F — E — D — C — B — A