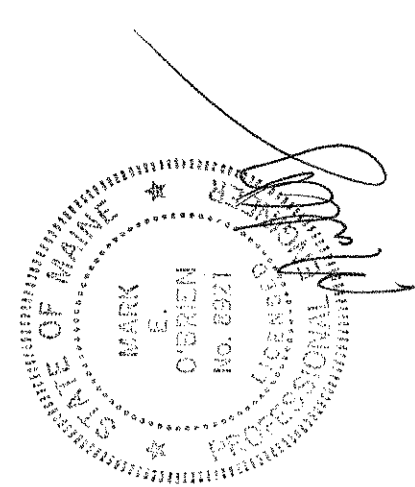




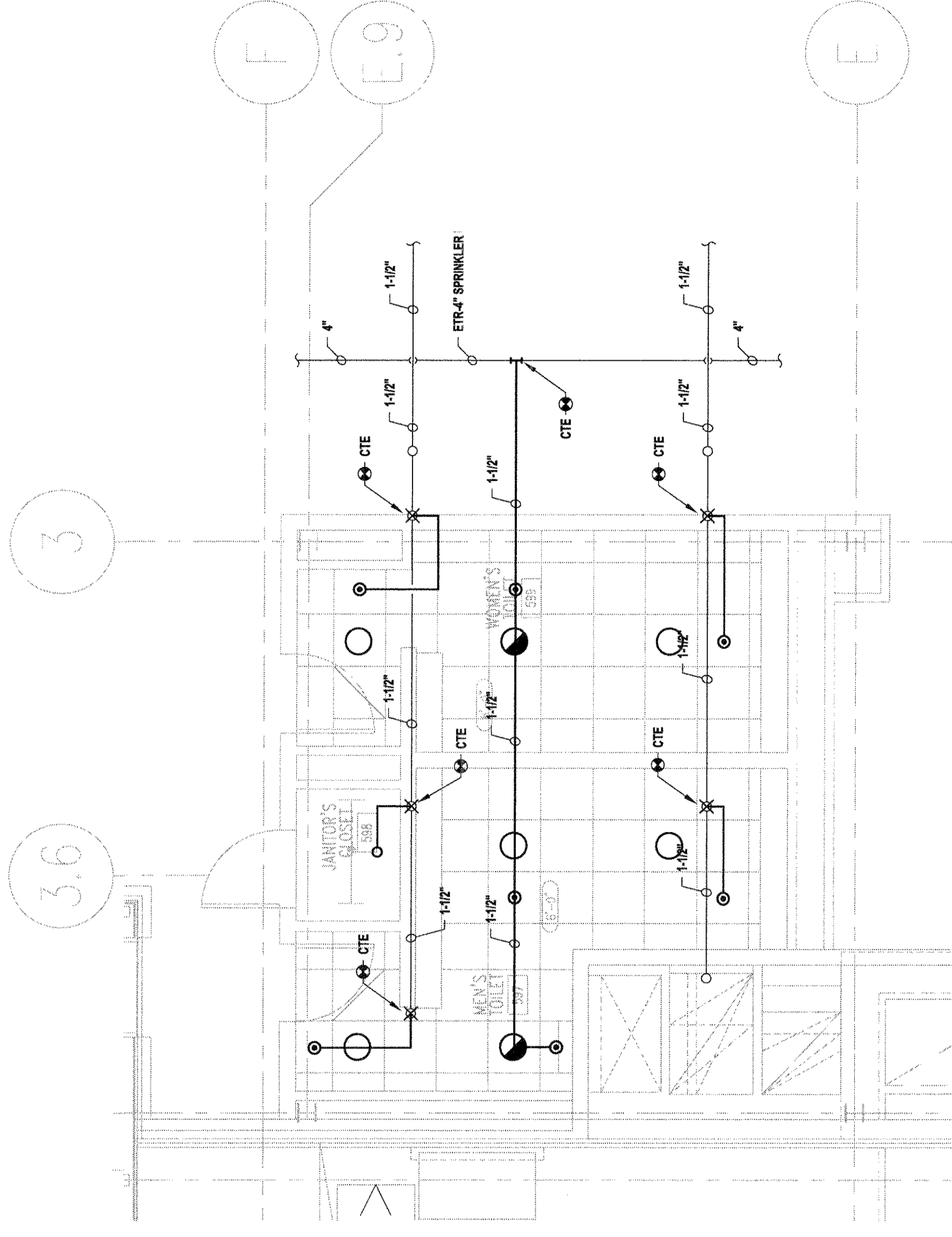
USM
 BIO-SCIENCE BUILDING TOILET ROOM FIT-UP
 SECOND, THIRD AND FIFTH FLOORS
 70 FALMOUTH STREET, PORTLAND, ME



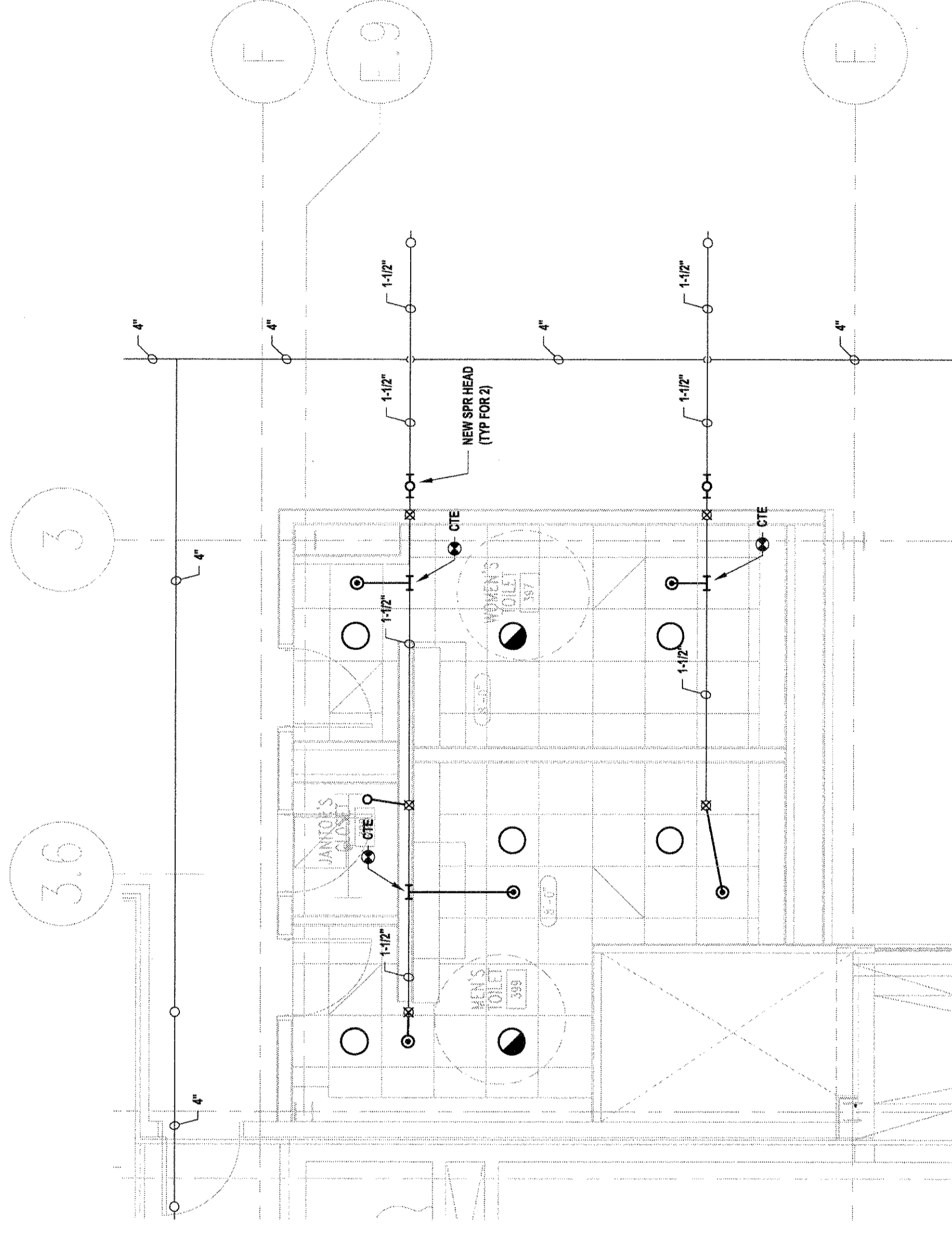
10/03/13	ISSUED FOR CONSTRUCTION
MARK DATE	DESCRIPTION
ISSUE LOG	
△	= CLOUDED CHANGE

SCALE	AS NOTED
DRAWN BY	JMS
CHECK BY	RBM
PROD. ARCH/ENGR	DJO
PROJ. MGR.	RCH
JOB NO.	11082.04
© SYMMES MAINI & MCKEE ASSOCIATES, INC. 2012	

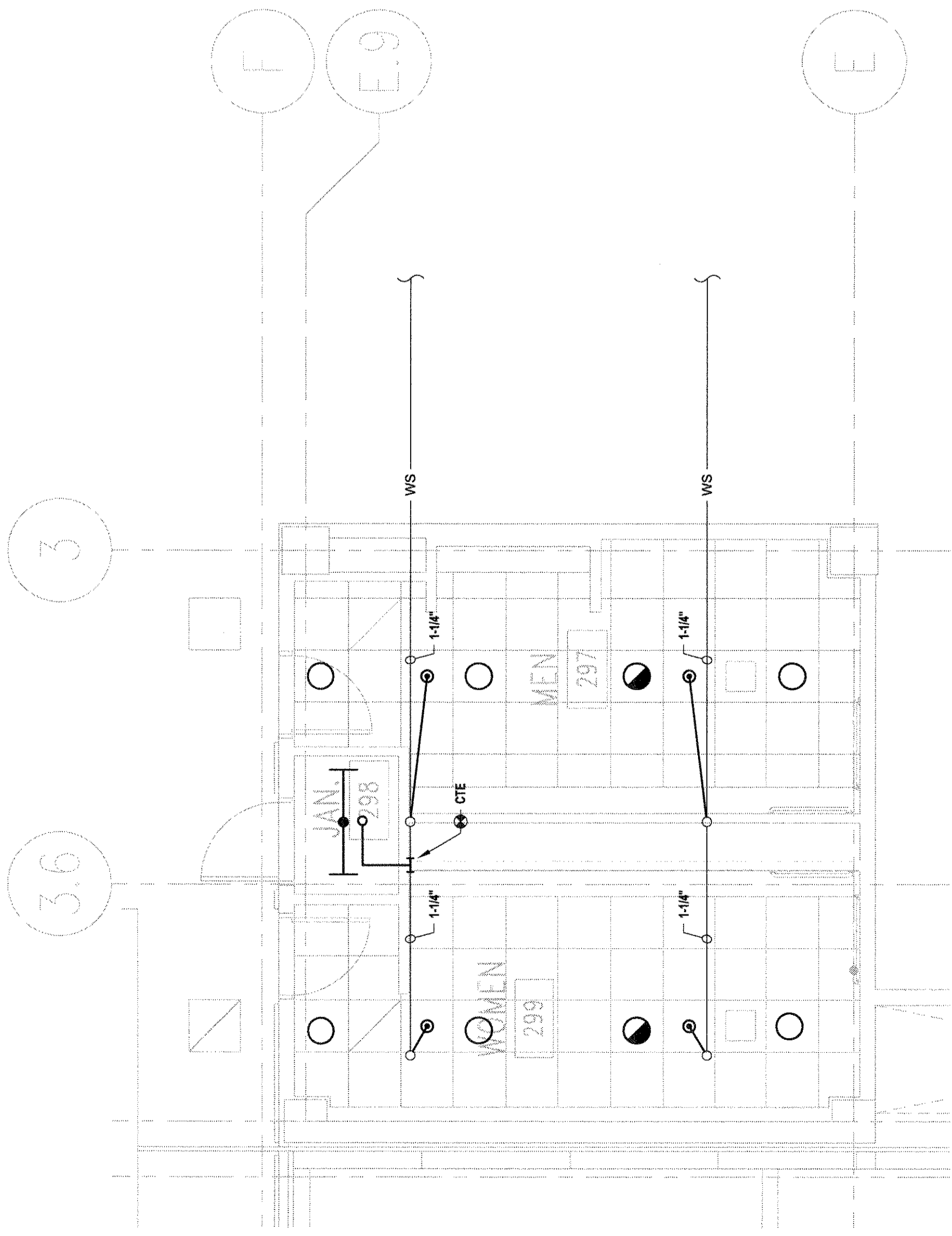
**ENLARGED
 FIRE PROTECTION
 2ND, 3RD AND 5TH
 FLOOR PLANS**



3 FIFTH FLOOR REFLECTED CEILING PLAN
 1/4" = 1'-0"



2 THIRD FLOOR REFLECTED CEILING PLAN
 1/4" = 1'-0"



1 SECOND FLOOR REFLECTED CEILING PLAN
 1/4" = 1'-0"