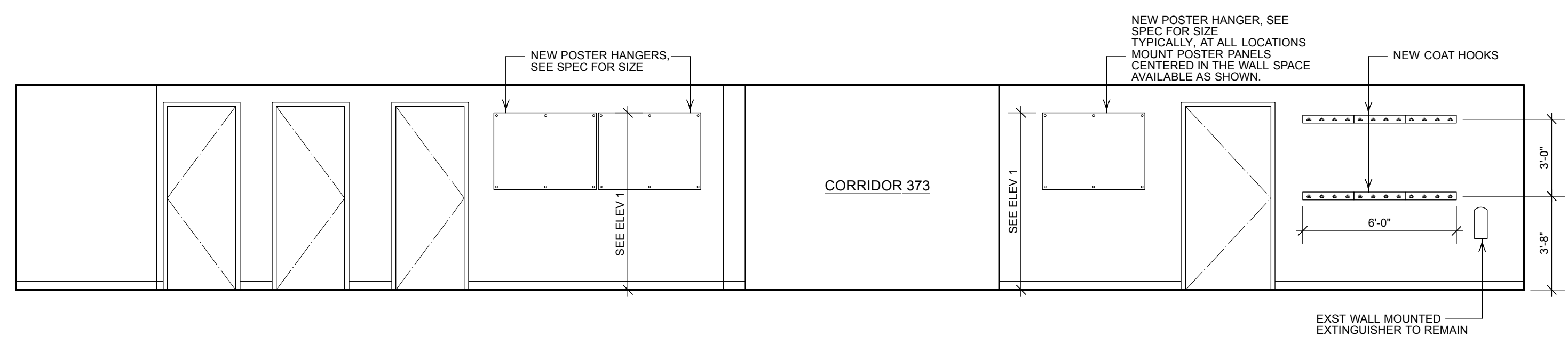
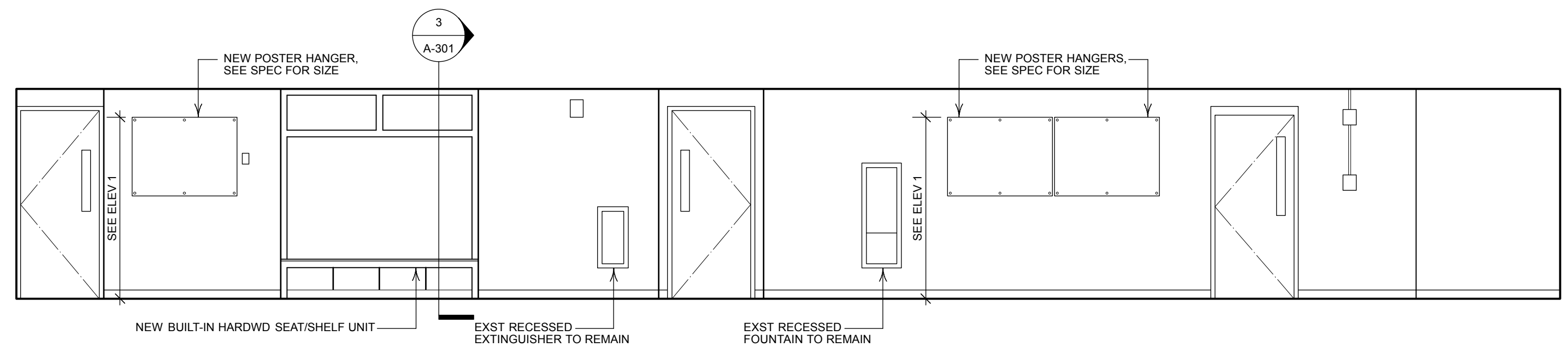


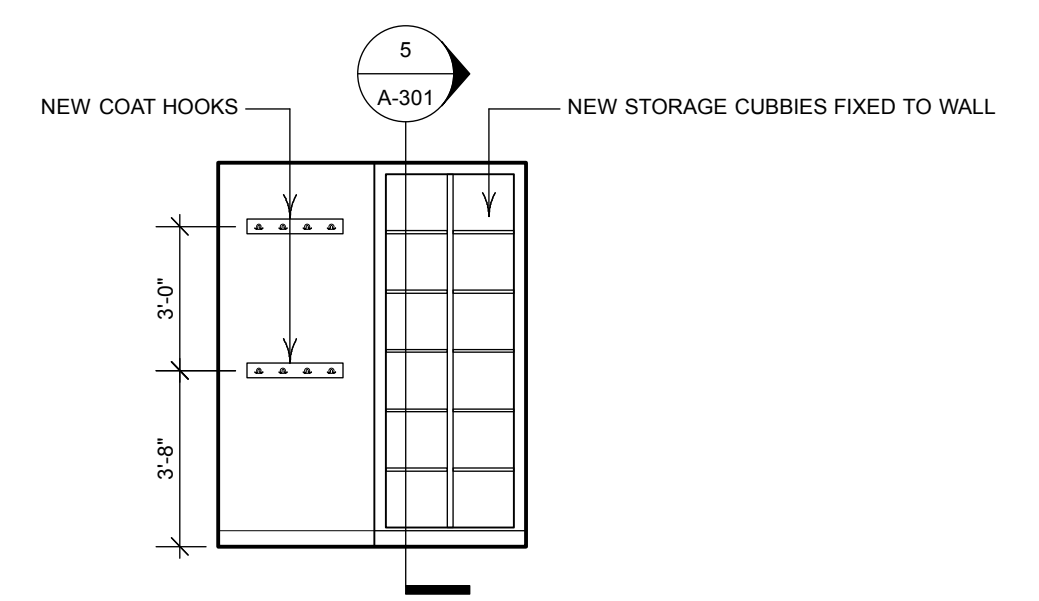
6 SOUTH WALL CHEM LAB 352
Scale: 1/4" = 1'-0"



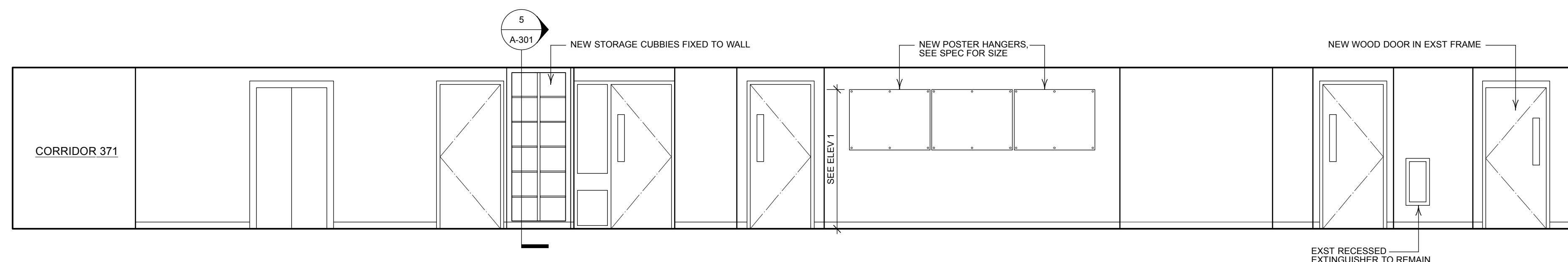
5 EAST WALL CORRIDOR 371
Scale: 1/4" = 1'-0"



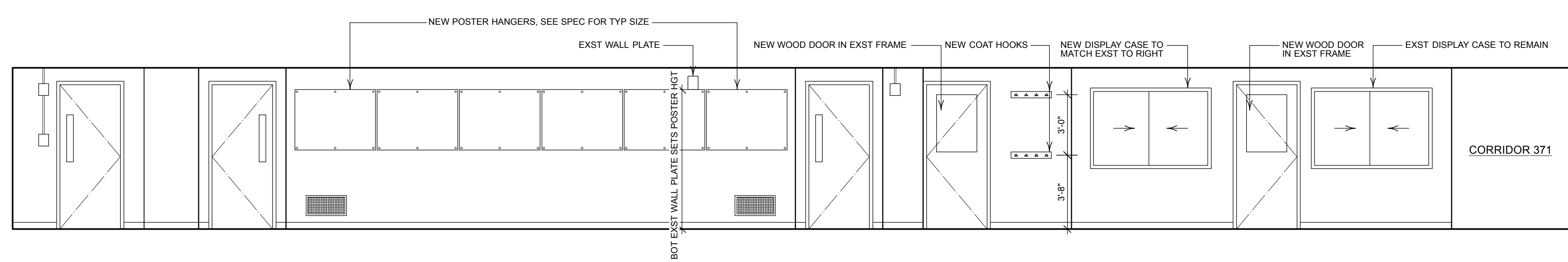
4 WEST WALL CORRIDOR 371
Scale: 1/4" = 1'-0"



3 EAST WALL CORRIDOR 373
Scale: 1/4" = 1'-0"



2 NORTH WALL CORRIDOR 373
Scale: 1/4" = 1'-0"



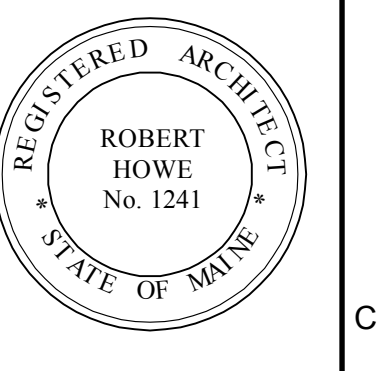
1 SOUTH WALL CORRIDOR 373
Scale: 1/4" = 1'-0"

HKTA Architects, Inc.
462 Congress Street, Suite 502
Portland, Maine 04101
phone: 207.774.6016
email: info@hkta.com

HKTA / architects

Allied Engineering
Structural Mechanical
Electrical Commissioning

160 Veranda Street
Portland, Maine 04103
T: 207.221.2260
F: 207.221.2266
Web: www.allied-eng.com



Science "B" 3rd Flr Renovation
USM Science Building B-Wing
70 Falmouth St.
Portland Maine

Project ID	-
CAD File Name	-
Drawn By	-
Checked By	-
Issue Date:	04-02-2013
Plot Date:	-
Reviewed by	-
Designed by	HKTA
Submitted By	-
Drawing Code	-
Sheet Title	INTERIOR ELEVATIONS