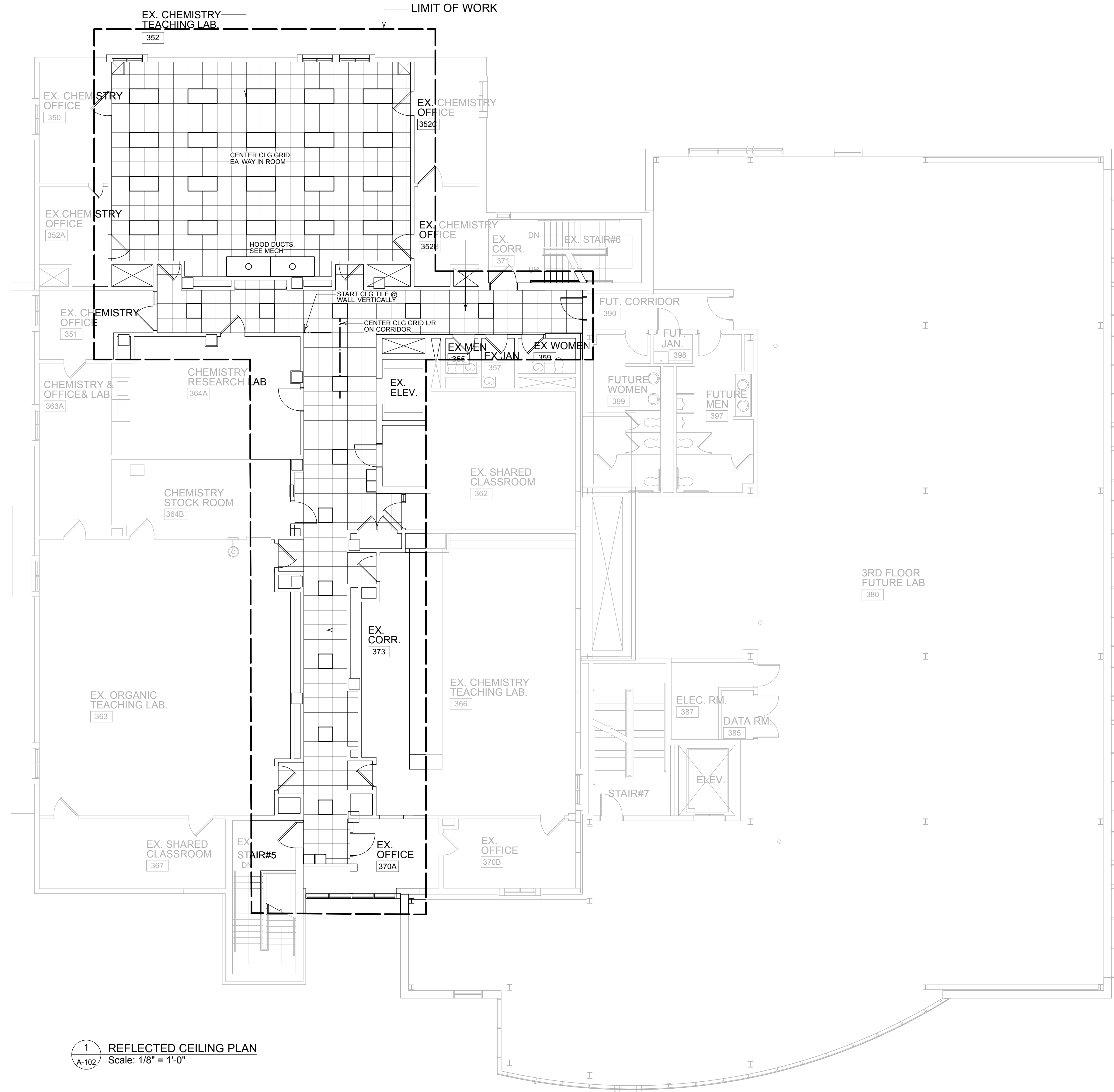
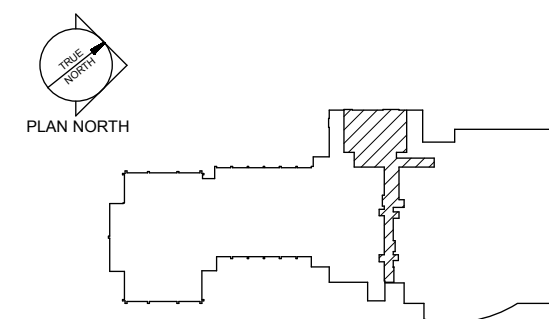


CEILING NOTES

1. CONSTRUCT OPENINGS IN NEW CEILING IN TEACHING LAB 352 TO MATCH EXISTING AT CORNERS ON NORTH SIDE (WINDOW SIDE) FOR ACCESS TO EXISTING VENTILATION GRILLES.
2. PROVIDE NEW METAL CEILING GRID AND ACOUSTIC TILE CEILINGS AT HEIGHT TO MATCH EXISTING HEIGHT IN ALL SPACES - TYPICAL.
3. SEE MECHANICAL DRAWINGS FOR ALL CEILING MOUNTED MECHANICAL ITEMS, COORDINATE CEILING GRID W/ MECH.
4. NEW LIGHTING LAYOUT SHOWN THIS SHEET REFERENCES ACTUAL LAYOUT OF ALL ELECTRICAL CEILING MOUNTED ITEMS SHOWN ON ELECTRICAL DRAWINGS, COORDINATE CEILING GRID W/ ELEC.
5. SEE SHEET M -101, COORDINATE SPRINKLER HEAD LOCATIONS IN ACCORDANCE WITH NOTES ON M - 101 AND CENTER ALL HEADS IN NEW CEILING TILES.



1 REFLECTED CEILING PLAN
 A-102 Scale: 1/8" = 1'-0"

Design Firm

HKTA Architects, Inc.
 462 Congress Street, Suite 502
 Portland, Maine 04101
 phone: 207.774.6016
 fax: 207.774.6018
 email: info@hkta.com

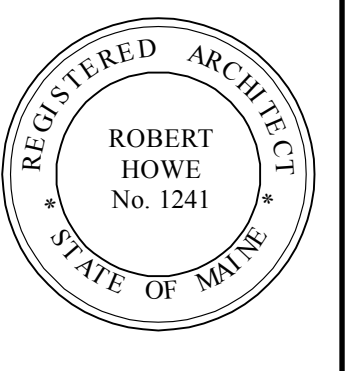
HKTA / architects

Consultant

Allied Engineering
 Structural Mechanical
 Electrical Commissioning

160 Veranda Street
 Portland, Maine 04103
 T: 207.221.2260
 F: 207.221.2266
 Web: www.allied-eng.com

Allied Project No. 12073



Project Title

Science "B" 3rd Flr Renovation
 USM Science Building B-Wing
 70 Falmouth St.
 Portland Maine

Mark	Date	Description

Issue/Revision	For Construction
Project ID	-
CAD File Name	-
Drawn By	-
Checked By	-
Issue Date:	04-02-2013
Plot Date:	-
Reviewed by	-
Designed by	HKTA
Submitted By	-
Drawing Code	-
Sheet Title	REFLECTED CLG PLAN

Drawing No.

A-102
 of Total Sheets