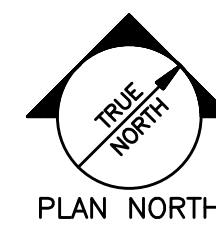
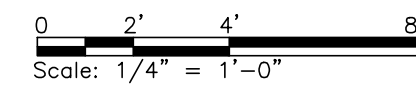
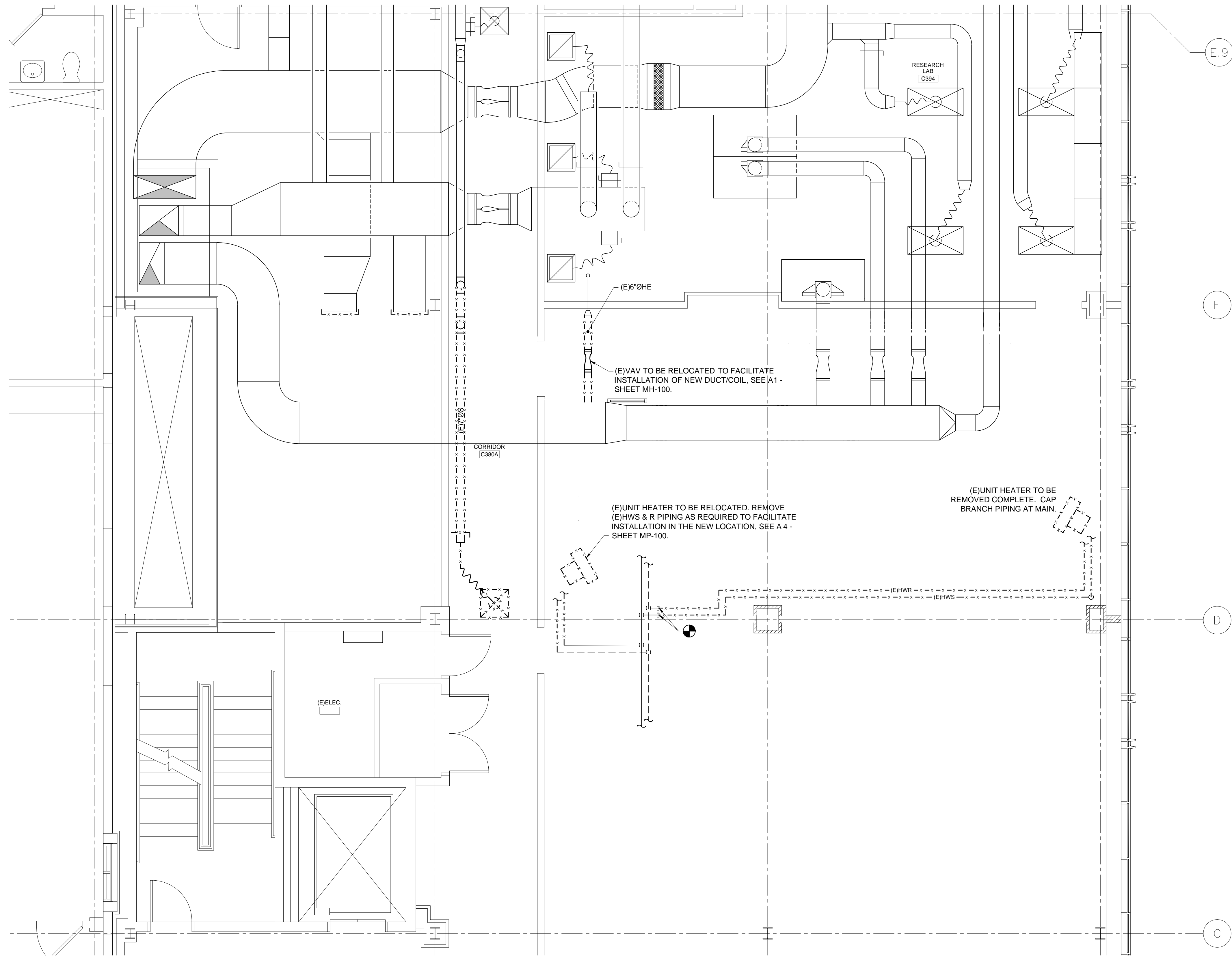


N:\Projects\2014\14003 - USM Bio Science\00 Drawing Files\14003M.dwg Mar 27, 2014 - 8:31am

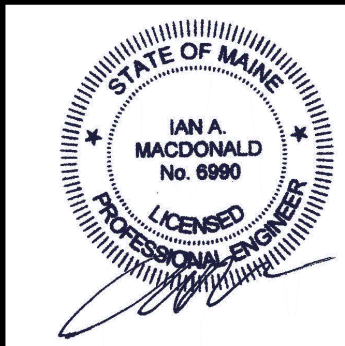


MECHANICAL DEMOLITION PART PLAN

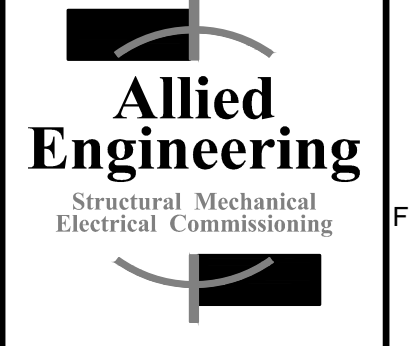
UNIVERSITY OF SOUTHERN MAINE BIO-SCIENCE
~ 3rd FLOOR LAB FIT-UP
PORTLAND, MAINE

Date: 3/28/2014
Drawn By: REW
Checked By: IAM
Project Mgr: IAM
Project No: 14003
Cad File: 14003M.dwg
Graphic Scale: 0 1"

REVISIONS		NUMBER	DATE	BY	DESCRIPTION



160 Veranda Street
Portland, Maine 04103
T: 207.221.2260
F: 207.221.2266
Web: www.allied-eng.com



HKTA / architects
452 Congress Street, Suite 302
Portland, Maine 04101
Phone: 207.771.6916
Fax: 207.771.2266
email: hkta@hkta.com

MD-100

A1 MECHANICAL DEMOLITION PLAN

1/4" = 1'-0"