

APPLICANT:
UNIVERSITY OF MAINE SYSTEM FOR THE UNIVERSITY OF SOUTHERN MAINE
96 FALMOUTH STREET
PORTLAND, ME 04104
PH: 207-760-4160

ARCHITECT:
HKTA/ARCHITECTS
482 CONGRESS STREET
PORTLAND, ME 04101

LEGEND

- EXIT ACCESS
- EXIT ROUTE
- EXIT STAIR
- NON-RATED WALL
- EMERGENCY LIGHT FIXTURE
- EXIT SIGN NEW
- EXIT SIGN EXISTING

BIO-SCIENCES LABORATORY FIT-UP
UNIVERSITY OF SOUTHERN MAINE
PORTLAND, MAINE

SCOPE OF WORK: NEW INTERIOR FIT-UP CONSTRUCTION FOR BIOLOGY RESEARCH LABORATORY

DESIGN CRITERIA
OCCUPANCY USE GROUP: IBC B BUSINESS
NFPA 101 NEW BUSINESS

BUILDING CONSTRUCTION TYPE: II B

BUILDING HEIGHT: 5 STORIES, 65'

BUILDING AREA: PARTIAL THIRD FLOOR PROJECT AREA FIT-UP 891 S.F.

PARTIAL THIRD FLOOR PROJECT AREA OCCUPANCY: 9 (100 G.S.F. PER OCCUPANT)

APPLICABLE CODES:
IBC 2009
NFPA 101 2012
NFPA 13
NFPA 45
MAINE STATE PLUMBING CODE
ADA/ADAAG GUIDELINES 2010
MAINE HUMAN RIGHTS ACT

FIRE PROTECTION: FULLY SPRINKLERED PER NFPA 13
APPROVED SUPERVISED FIRE ALARM SYSTEM

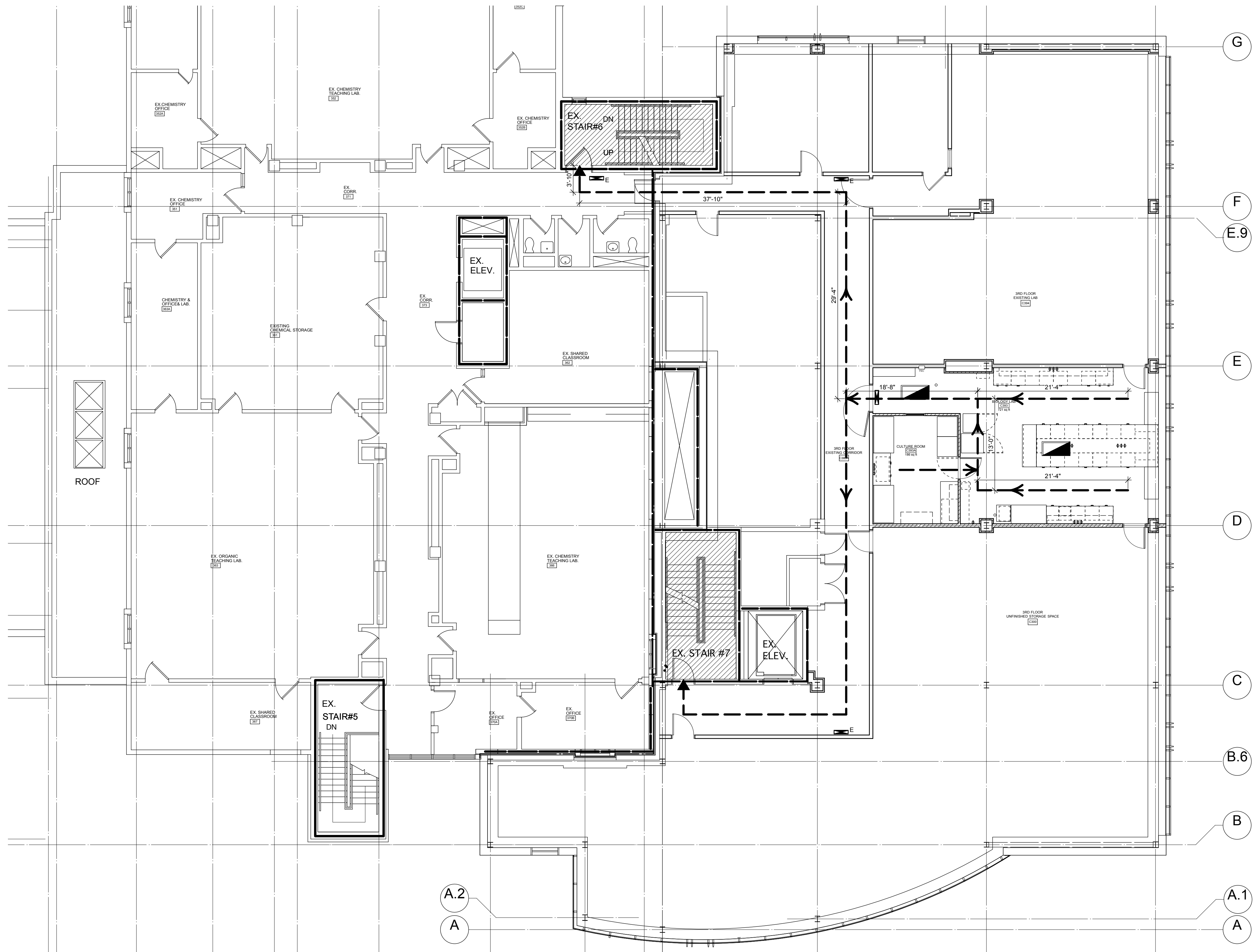
SITE CRITERIA: EXISTING BUILDING

LIFE SAFETY EXITS PROVIDED:
PARTIAL THIRD FLOOR PROJECT AREA - 2 EXISTING EGRESS STAIRS

PATH OF TRAVEL REQUIREMENTS PER NFPA: NEW BUSINESS
DEAD END PROTECTED: 50'
COMMON PATH OF TRAVEL PROTECTED: 100'
MAXIMUM TRAVEL PROTECTED: 300'
CORRIDOR FIRE RESISTANCE RATING: NONE

GAS USAGE WITHIN LAB: NO BOTTLED GASES

TRAVEL DISTANCE FROM MOST REMOTE POINT TO POINT OF EXIT ACCESS - 124'
SEE DIMENSIONED ROUTE ON THIS PLAN.



1 LIFE SAFETY PLAN - FOR INFORMATIONAL PURPOSES ONLY
LS-101 Scale: 1/8" = 1'-0"



REVISIONS		NUMBER	DATE	BY	DESCRIPTION

Date: 3/28/2014	Drawn By: WGC
Checked By: REH	Project Mgr: IAM
Project No: 14003	Cad File: HKTA 2014001
Graphic Scale: 0 1"	Scale: 1"