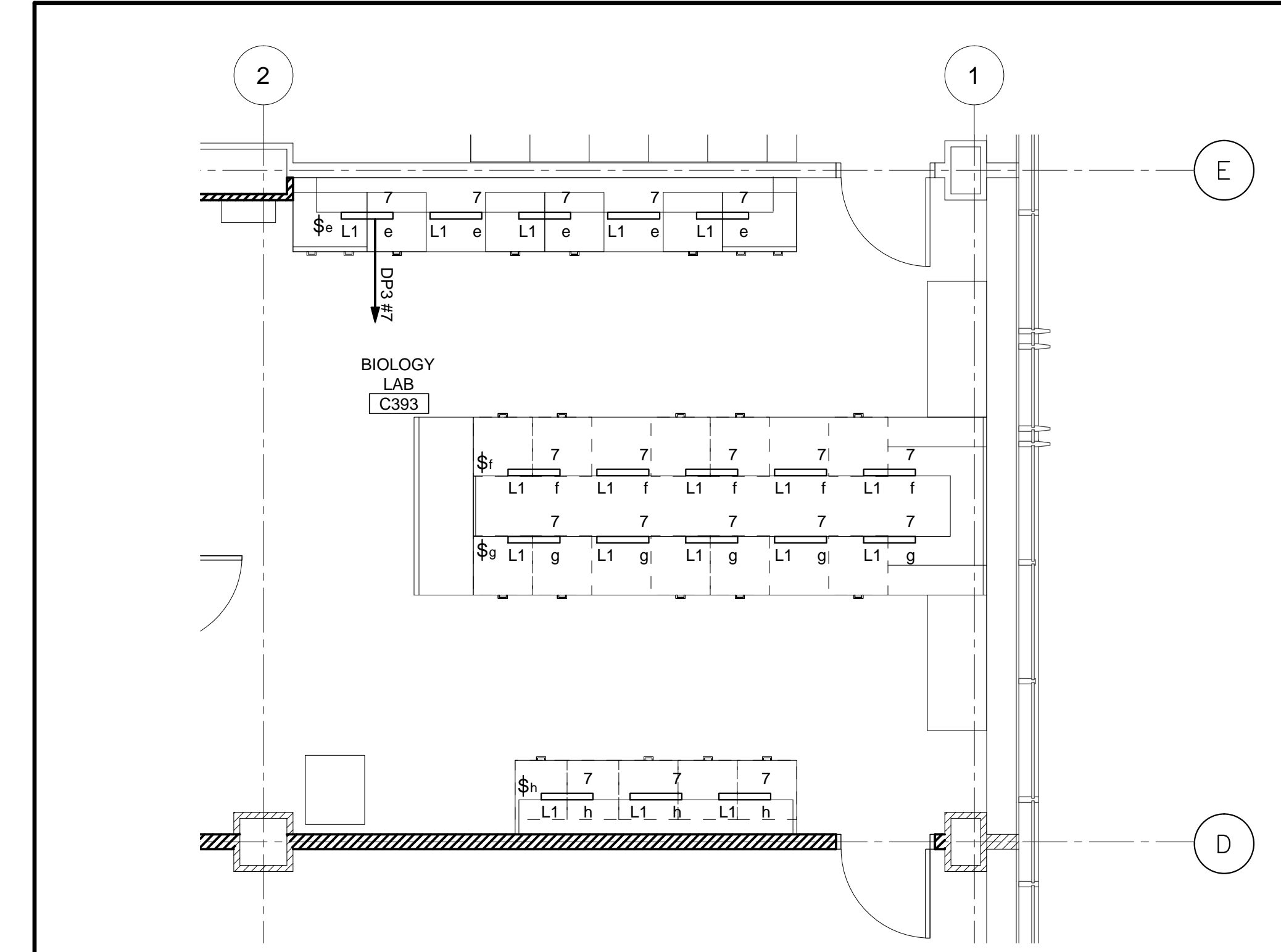
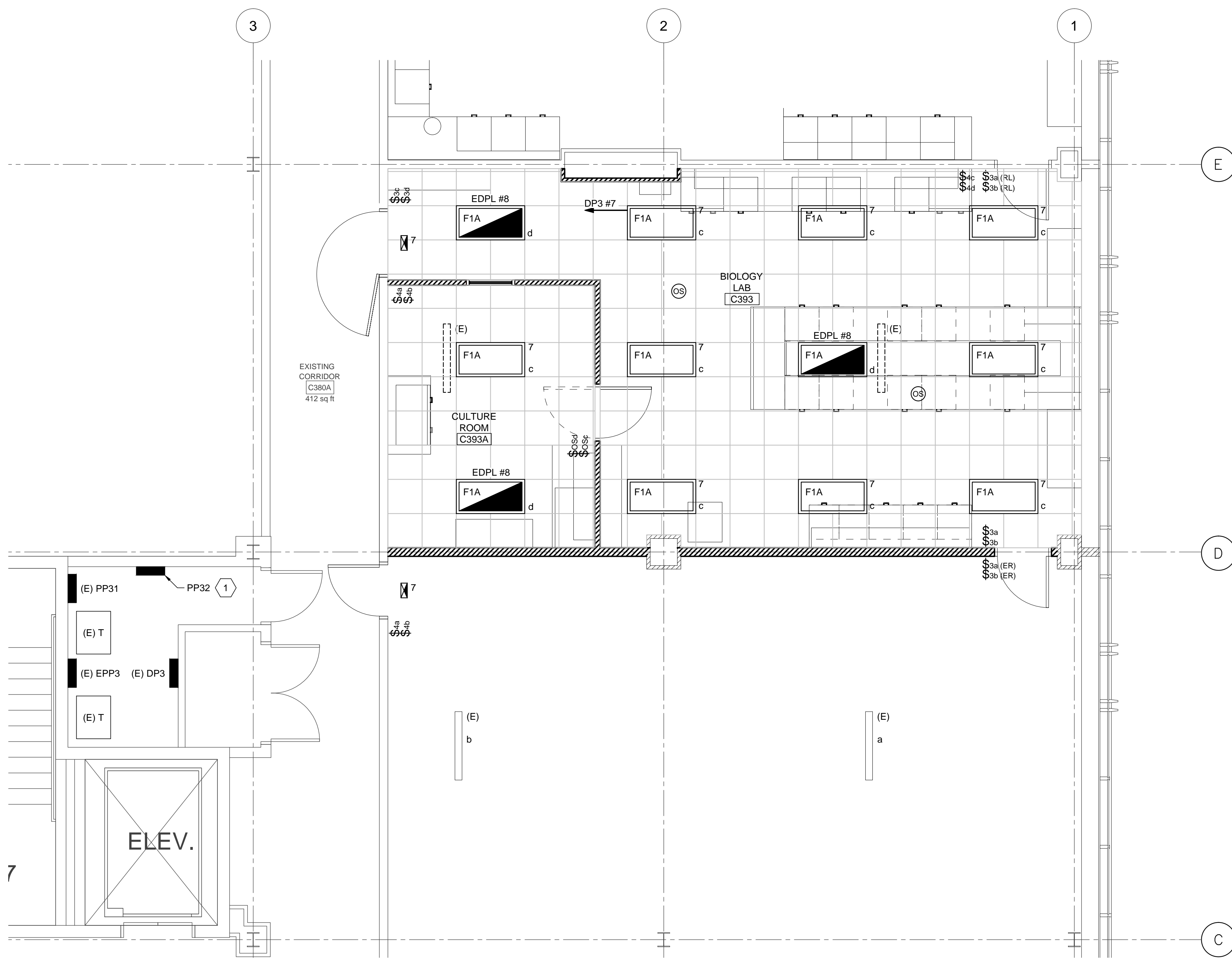
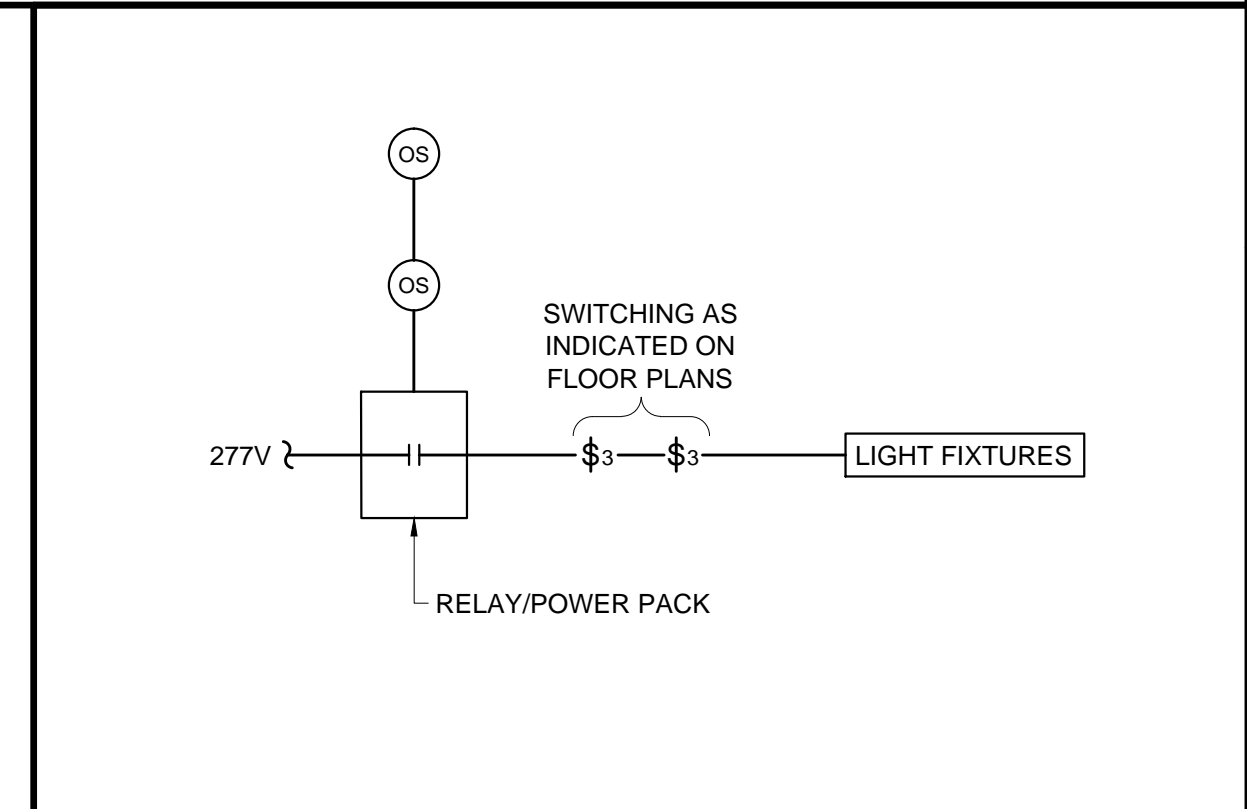


N:\Projects\2014\14003 - USM Bio Science\00 Drawing Files\14003E.dwg Mar 27, 2014 - 10:13am



C7 UNDERCABINET LIGHTING DETAIL
SCALE: 1/4"=1'-0"



F9 TYPICAL OCCUPANCY SENSOR CONNECTION
NO SCALE

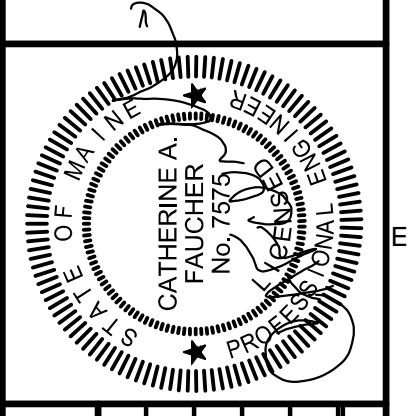
- LIGHTING PLAN**
- 1 REMOVE EXISTING SWITCH AND LIGHT FIXTURES.
 - 2 PROVIDE EMERGENCY SHUNT RELAY TO BYPASS SWITCHING FOR LIGHTING CONNECTED TO THE LIFE SAFETY BRANCH. CIRCUIT EDPL-8 IS THE EXISTING LIFE-SAFETY BRANCH CIRCUIT THAT SERVES THE EXISTING CORRIDOR.

A9 LIGHTING KEYED NOTES
NO SCALE

A1 LIGHTING PLAN
SCALE: 1/4"=1'-0"

HKTA Architects, Inc.
452 Congress Street, Suite 502
Portland, Maine 04101
HKTA architects
Phone: 207.774.6616
Fax: 207.774.0128
email: hktat@aol.com

Allied Engineering
Structural Mechanical
Electrical Commissioning
160 Veranda Street
Portland, Maine 04103
T: 207.221.2260
F: 207.221.2266
Web: www.allied-eng.com



REVISIONS		DESCRIPTION
NUMBER	DATE	BY

Date: 3/28/2014
Drawn By: GMC
Checked By: SRM
Project Mgr: IAM
Project No: 14003
Cad File: 14003E.DWG
Graphic Scale: 0 1"

LIGHTING PLAN
UNIVERSITY OF SOUTHERN MAINE BIO-SCIENCE
~3rd FLOOR LAB FIT-UP
PORTLAND, MAINE
© 2014 ALLIED ENGINEERING, INC.

EL-100