

ID		Nominal Size		Location	Door Style	Glass	Door Frame			Fire Rating	Hdwr	Openings	Door Data							
Prefix	Mark	Width	Height		Door Operation	Door Matl	Door Type	Frame Matl	Frame Type	Head Detail	Jamb Detail	Sill Detail	Frame	Door Slab	HW Set See Spec	RO Width Nom.	RO Height Nom.	Accessories	Comments	
3	80A	1	3'8"	7'0"	1 3/4"	C393	Swing Simple	WD	B	Safety	HM	2	2/A-401	1/A-401						
3	80A	2	3'0"	7'0"	1 3/4"	C300	Swing Simple	WD	EXST		HM	EXST	2/A-401	1/A-401						EXST DOOR IN CORR. C380A
3	92		3'0"	7'0"	1 3/4"	C393	Swing Simple	WD	C		HM	1	2/A-401	1/A-401						
3	93A		3'0"	7'0"	1 3/4"	C393A	Swing Simple	WD	A	Safety	HM	1	2/A-401	1/A-401						ARMOR PLATE DOUBLE ACTING

ID		Nominal Size		Location	Window Style	Glass	Frame Details			Code	Openings	Window Data				
Prefix	Mark	Unit Width	Unit Height		Sash Operation	Frame Matl	Window Type	Head Detail	Jamb Detail	Sill Detail	Egress Window	RO Width	RO Height	Rough Sill Hgt	Accessories	Comments
3	93	A	2'10"	3'10"	C393	Fixed Glass	H.M.	FG	Safety			2'10"	3'10"	34"		

Room	Room Name	Floor	Wall	North	East	South	West	Ceiling	Remarks
C393	BIOLOGY LAB	VCT	PGB	PGB	PGB	PGB	PGB	ACT1	
C393A	CULTURE ROOM	VCT	PGB	PGB	PGB	PGB	PGB	ACT1	

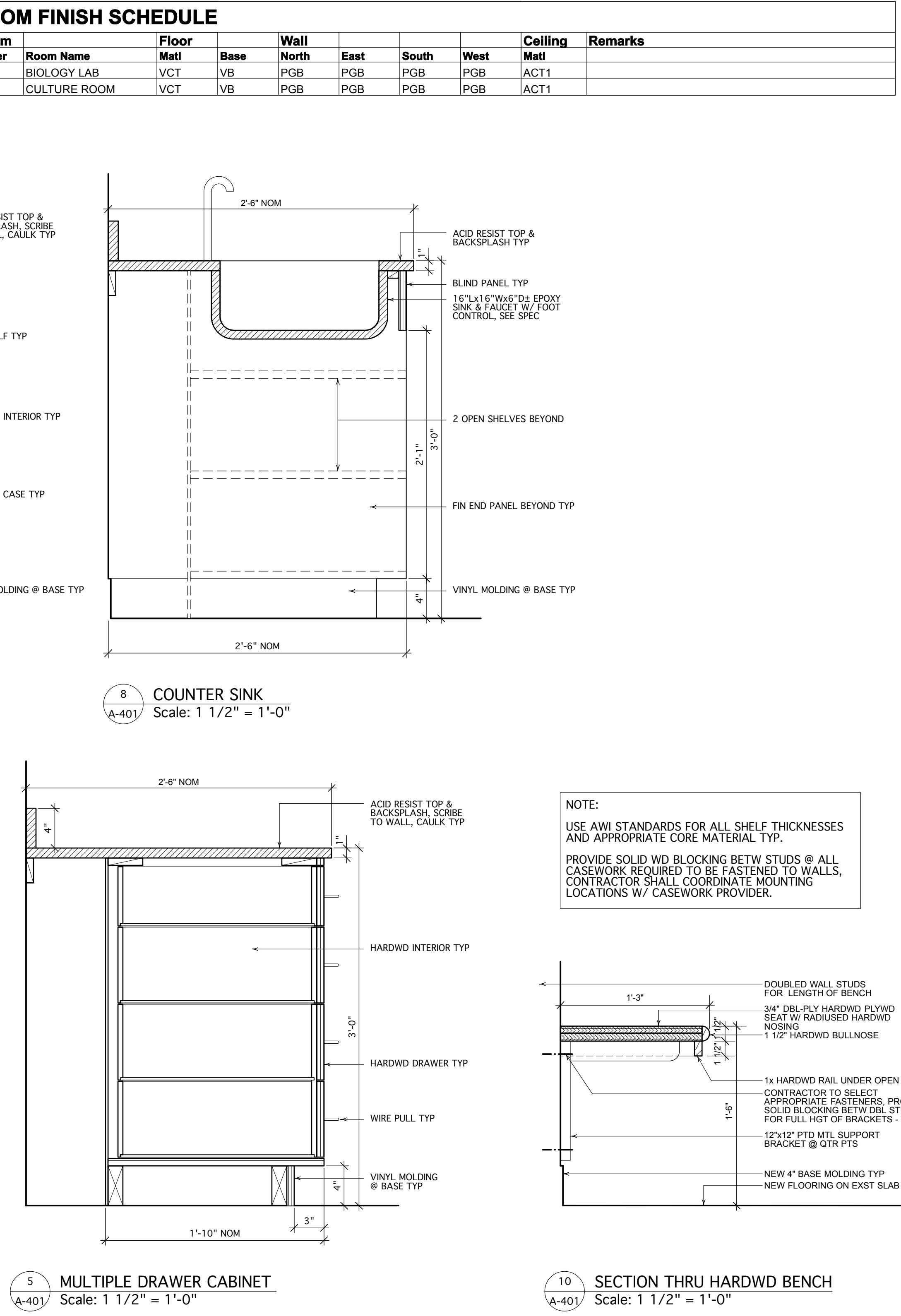
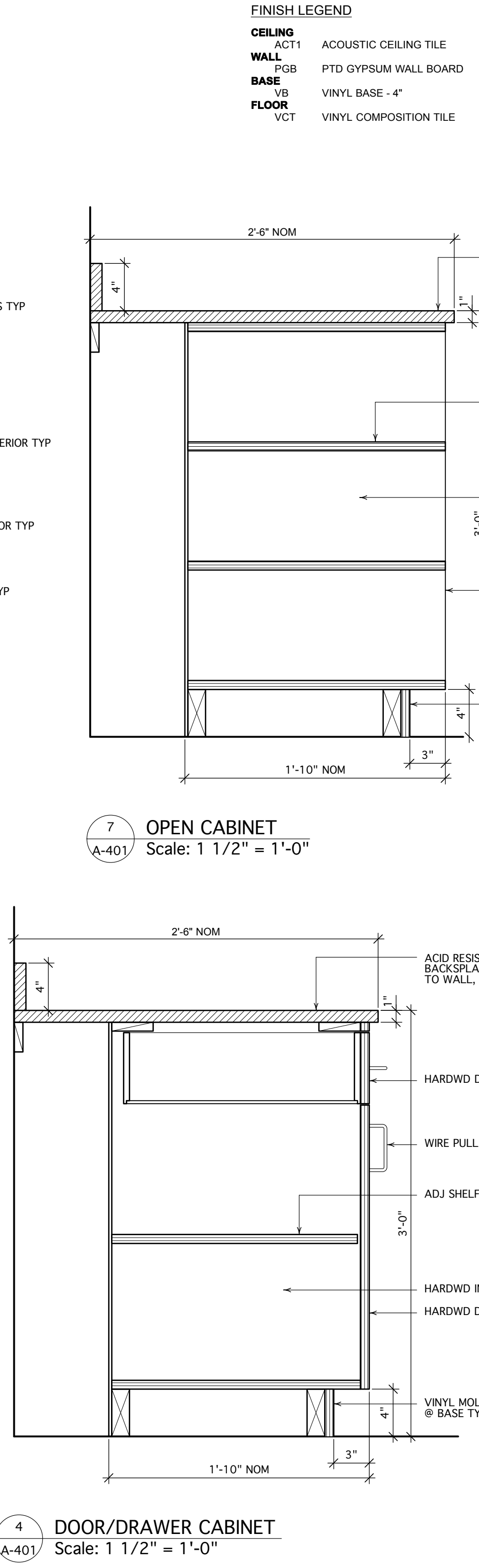
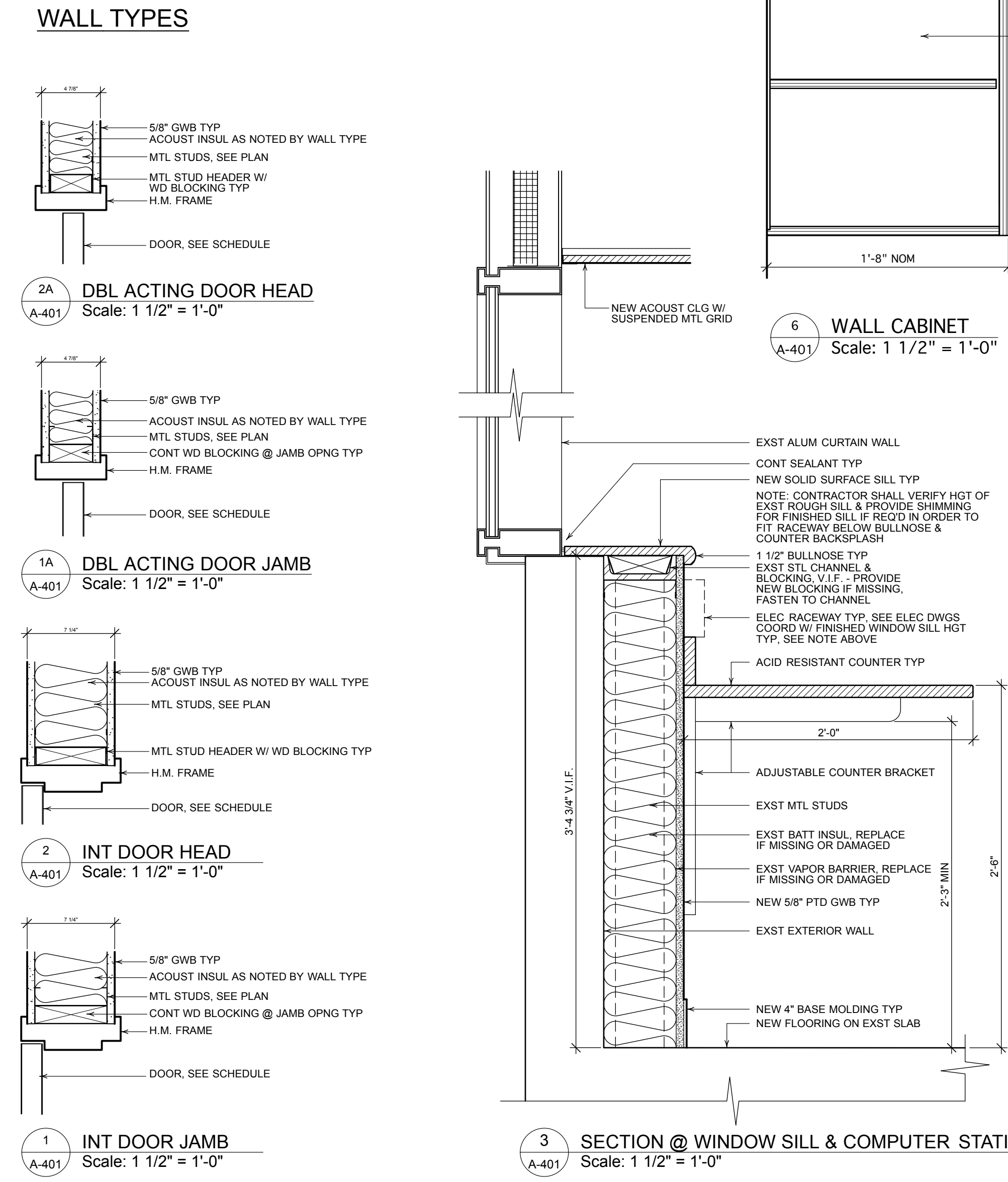
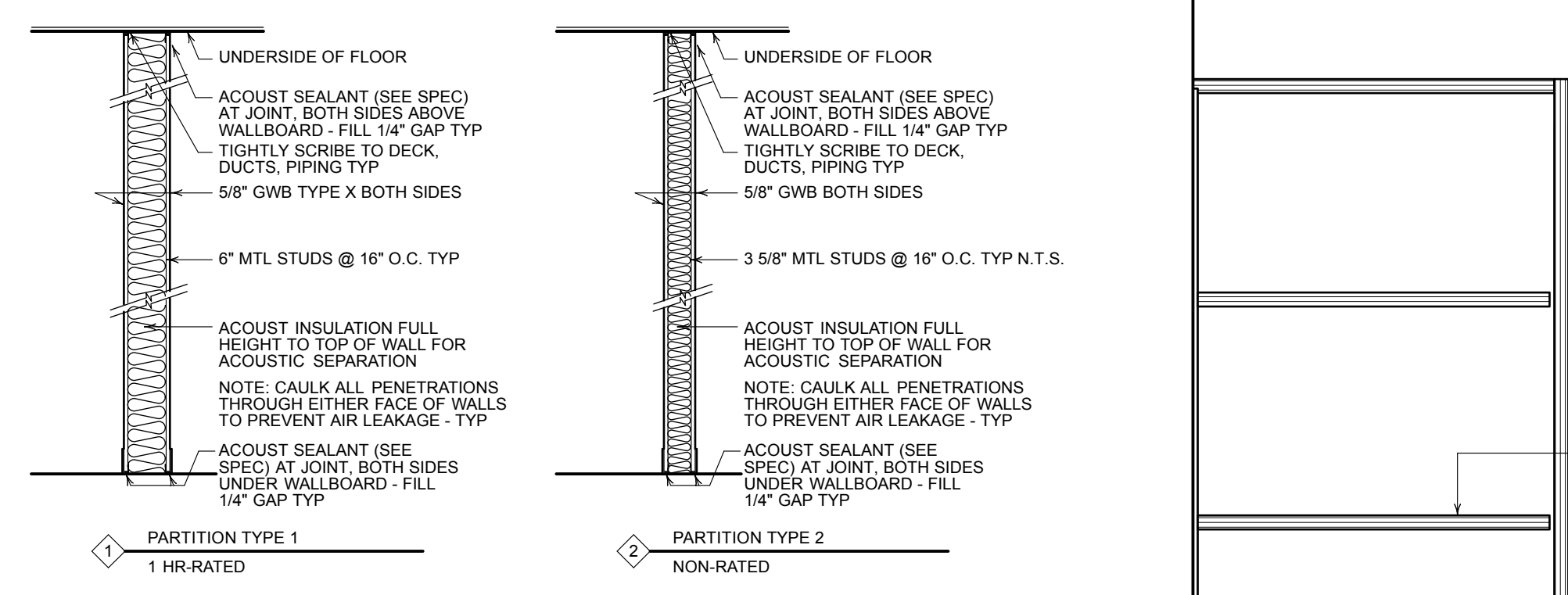
FINISH LEGEND

CEILING
 ACT1 ACOUSTIC CEILING TILE

WALL
 PGB PTD GYPSUM WALL BOARD

BASE
 VB VINYL BASE - 4"

FLOOR
 VCT VINYL COMPOSITION TILE



HKTA Architects, Inc.
 465 Congress Street, Suite 502
 Portland, Maine 04101
 Phone: 207.774.6016
 Fax: 207.774.6168
 Email: info@hkta.com

HKTA architects

Allied Engineering
 Structural Mechanical
 Electrical Commissioning

160 Veranda Street
 Portland, Maine 04103
 T: 207.221.2260
 F: 207.221.2266
 Web: www.allied-eng.com

REGISTERED ARCHITECT
 ROBERT HOWE
 No. 1241
 STATE OF MAINE

NO.	DATE	BY	DESCRIPTION

Date: 3/28/2014
 Drawn By: WGC
 Checked By: REH
 Project Mgr: IAM
 Project No: 14003
 Cad File: HKTA 2014001
 Graphic Scale: 0 1'

DOORS, ARCH DETAILS, SCHEDULES
 THIRD FLOOR

UNIVERSITY OF SOUTHERN MAINE BIO-SCIENCE
 -THIRD FLOOR LAB RENOVATION - BIOLOGY
 PORTLAND, MAINE

A-401