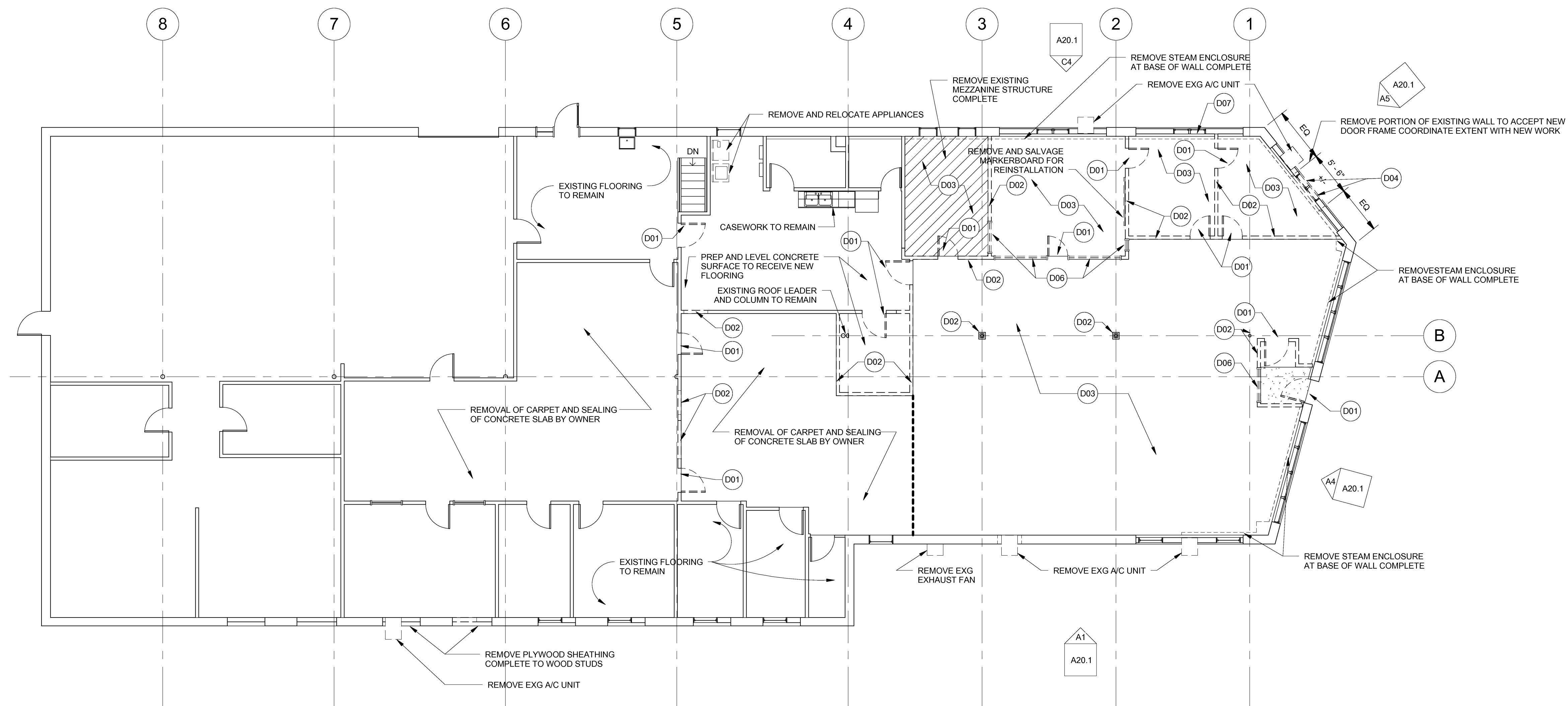


D1 DEMOLITION CEILING PLAN
SCALE: 1/16" = 1'-0"

DEMOLITION KEY	
CODE	DESCRIPTION
D01	REMOVE DOOR AND FRAME COMPLETE
D02	REMOVE STUD PARTITION (TRIM, BASE, ETC.) COMPLETE
D03	REMOVE AND SALVAGE CARPET FLOORING; CLEAN AND PREP TO RECIEVE FLOOR COVERING, REMOVE EXG WALL BASE
D04	REMOVE WINDOW, TRIM AND ACCESSORIES COMPLETE
D05	REMOVE SUSPENDED CEILING SYSTEM COMPLETE, AND ANY AND ALL CEILINGS ATTACHED OR SUSPENDED FROM ROOF STRUCTURE
D06	REMOVE BORROWED LIGHT AND TRIM
D07	REMOVE WOOD PANELING

- DEMOLITION NOTES**
1. ALL DASHED LINES INDICATE EXISTING CONSTRUCTION TO BE DEMOLISHED. U.M.O.
 2. DEMOLITION SHEETS SHOW THE GENERAL SCOPE OF DEMOLITION WORK. REFER TO SPECIFIC DISCIPLINES FOR ADDITIONAL INFORMATION. CONSULT ALL DRAWINGS AND COORDINATE WORK TO ESTABLISH EXTENTS OF DEMOLITION WORK.
 3. FIELD VERIFY ALL CONDITIONS AND NOTIFY ARCHITECT OF ANY DEVIATIONS FROM THE DRAWINGS.
 4. DEMOLITION TO BE ACCOMPLISHED TO RECEIVE NEW WORK AS SET FORTH IN THE CONTRACT DOCUMENTS. REFER TO STRUCTURAL, MECHANICAL, PLUMBING, ELECTRICAL AND FIRE PROTECTION DRAWINGS FOR ADDITIONAL WORK. COORDINATE ALL REQUIRED DEMOLITION IN ALL DISCIPLINES.
 - 5.



A1 DEMOLITION FLOOR PLAN
SCALE: 1/8" = 1'-0"

HARRIMAN
Architects + Engineers

46 Harriman Drive
Auburn, ME 04210
207.784.5100 tel

123 Middle Street
Portland, ME 04101
207.775.0053 tel

One Perimeter Road
Manchester, NH 03103
603.626.1242 tel

www.harriman.com
© 2012

Project Title

**USM
25 BEDFORD STREET
RENOVATION**

PORTLAND, ME

Harriman Project No. 11711

Key Plan

Drawing Scales

As indicated

0 4' 8' 12'

1/8" = 1'-0"

0 8' 16' 24'

1/16" = 1'-0"

Graphic Scale

Graphic Scale

Mark	Date	Description
	04/02/2012	ISSUED FOR BID
	03/12/2012	95% REVIEW
	03/02/2012	75% REVIEW
	02/17/2012	PROGRESS REVIEW

Issue Dates

Drawing Status

Drawing Title

**DEMOLITION FLOOR &
CEILING PLAN**

PA / PE: MDL Drawn By: BSL

Drawing Number

A05.1