

GENERAL NOTES:

- SEE G001 FOR PROJECT GENERAL NOTES
- SEE G001 FOR PROJECT GENERAL NOTES
- REFER TO SHEET G001 FOR TYPICAL MOUNTING HEIGHTS OF PLUMBING FIXTURES, RESTROOM ACCESSORIES & MISCELLANEOUS ITEMS.
- REFER TO G001 FOR WALL LEGEND.
- REFERENCE DETAILS FOR ADDITIONAL DIMENSIONAL INFORMATION.
- DOOR JAMBS SHALL BE LOCATED 6" FROM CORNER IN STUD PARTITIONS, UNLESS INDICATED OTHERWISE.
- EXCEPT WHERE FLOORS ARE TO BE SLOPED, MOUNT FLOOR DRUMS 1/8" BELOW FINISHED FLOOR ELEVATION.
- RE AE601 FOR WINDOW TYPES.
- FIELD VERIFY ALL LAYOUTS & DIMENSIONS PRIOR TO PROCEEDING WITH THE WORK. NOTIFY THE ARCHITECT IN WRITING OF ANY DISCREPANCIES OR INCONSISTENCIES.
- TOILET ACCESSORY DIMENSIONS AND CLEAR DIMENSIONS ARE FROM FACE OF FINISH.
- ELEVATIONS ARE SHOWN FROM WINDOW TAG SIDE OF GLAZING.

FLOOR PLAN K N NOTES:

- F1** PATCH WALL TO MATCH EXISTING ADJACENT CONSTRUCTION AND FINISHES, INCLUDING AND FIRE RATINGS THE EXISTING PARTITION MAINTAINS.
- F2** SINK, RE PLUMB.
- F3** FLOOR TILE TO BE PATCHED TO MATCH EXISTING QUARRY TILE WHERE DAMAGED BY PARTITION REMOVAL.
- RELOCATED DOOR OPERATOR.

GENERAL DEMOLITION NOTES:

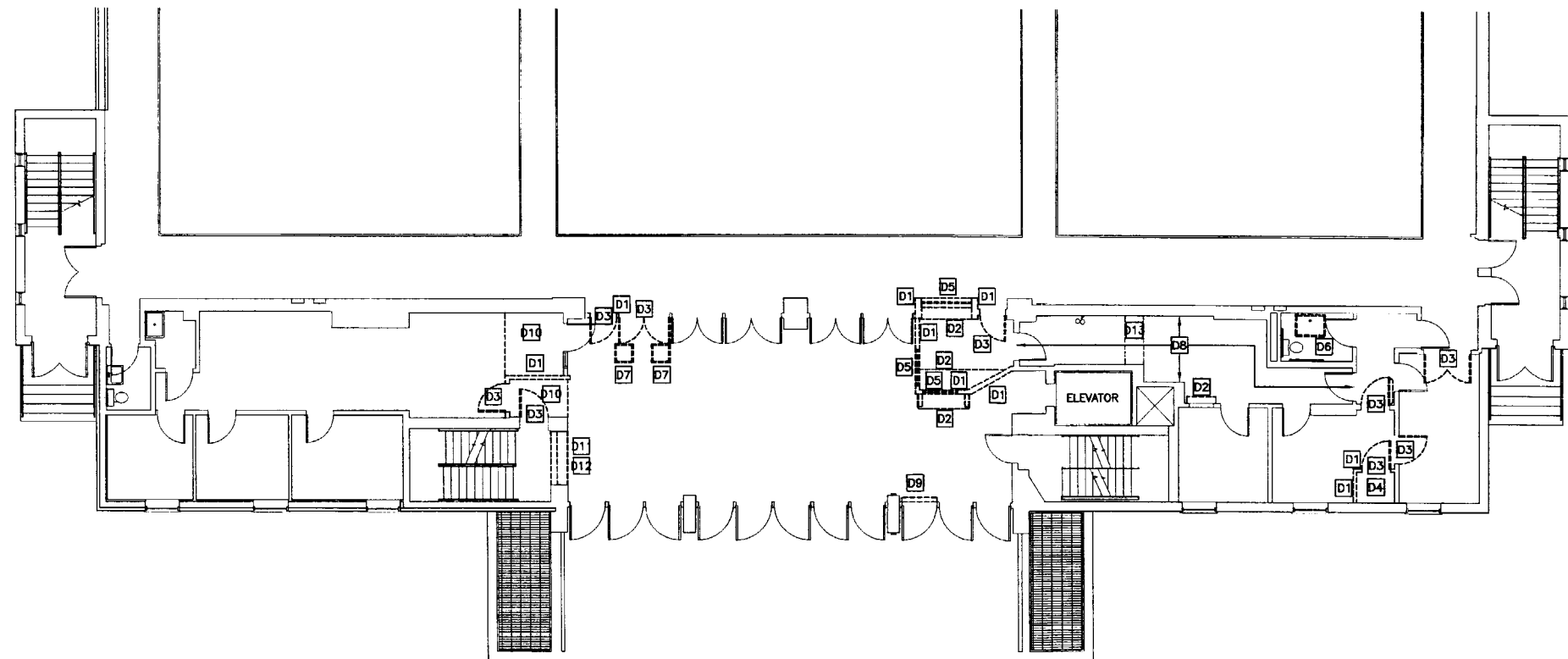
- COORDINATE EXTENT OF DEMOLITION WITH LOCATIONS OF PARTITIONS DESCRIBED ON PLANS AND WITH LOCATIONS OF FINISHES NOTED AS EXISTING TO REMAIN.
- ANY WALL, PARTITION OR SURFACE DISTURBED BECAUSE OF NEW WORK OR DEMOLITION SHALL BE PATCHED AND FINISHED CONTINUOUSLY TO THE NEAREST CORNER UNLESS NOTED OTHERWISE, MATCH EXISTING ADJACENT CONSTRUCTION FINISHES, CONTINUITY AND FIRE RATINGS UNLESS NOTED OTHERWISE.
- PROTECT ALL FINISHES, MATERIAL AND EQUIPMENT NOTED AS EXISTING TO REMAIN. CONTRACTOR SHALL BE RESPONSIBLE TO REPLACE ALL FINISHES, MATERIAL AND EQUIPMENT DAMAGE DURING CONSTRUCTION.
- FOR EXTENTS OF CEILING GRID REMOVALS AND ADJUSTMENTS REFER TO SHEET AE???
- DIMENSIONS INDICATED ± ARE EXISTING CONDITION DIMENSIONS TO BE VERIFIED IN FIELD.

DEMOLITION PLAN KEY NOTES:

- D1** REMOVE PARTITION COMPLETE.
- D2** REMOVE EXISTING CASEWORK COMPLETE.
- D3** REMOVE DOOR, FRAME AND HARDWARE COMPLETE. SALVAGE FOR RE-USE.
- D4** REMOVE CEILING TILE AND GRID ASSEMBLY COMPLETE. COORDINATE EXTENTS OF REMOVAL WITH PARTITION LOCATIONS AND EXISTING FINISHES TO REMAIN.
- D5** REMOVE GLAZING PANE AND FRAME COMPLETE.
- REMOVE FIXTURE. CLEAN AND RETURN TO OWNER.
- D7** REMOVE EXISTING LIGHT FIXTURE ABOVE. RETURN TO OWNER.
- REMOVE CARPET
- REMOVE DOOR OPERATOR AND ACCESSORIES. SALVAGE FOR RE-USE.
- OWNER TO REMOVE ALL FLOOR FINISHES IN THIS AREA.
- D11** REMOVE UNIT HEATER. RETURN TO OWNER.
- D12** REMOVE DISPLAY CASE COMPLETE.
- D13** REMOVE CEILING TILE AND GRID ASSEMBLY AS NEEDED FOR CONSTRUCTION OF NEW GWB WALL. CUT GRID AND CEILING TILE AS NEEDED FOR REINSTALLATION.

G1 FLOOR PLAN

1/8" = 1'-0"

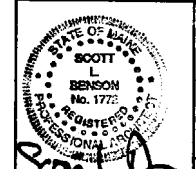


A1 DEMOLITION PLAN

1/8" = 1'-0"



ARCHITECTURE ENGINEERING PLANNING
SMRT
144 Fore Street, P.O. Box 618
Portland, Maine 04104
Tel: (207) 772-3846
Fax: (207) 772-1070



PROJECT TITLE:
**UNIVERSITY OF SOUTHERN MAINE
SULLIVAN GYMNASIUM RENOVATIONS**
PORTLAND, MAINE

CURRENT ISSUE STATUS:
**ISSUED FOR PERMITTING/PRICING
8-25-06**

NO.	DATE	DESCRIPTION
0	8-25-06	ISSUED FOR PERMITTING/PRICING

GRAPHIC SCALE:
0" 1"

SCALE: AS NOTED

PROJECT MANAGER: SLB

JC/DRAWN BY: TCM/TCM

A/E OF RECORD: SLB

CAD FILE: A-101-06104

PROJECT NO: 06104

DATE: 8-25-06

SHEET TITLE:
PLANS

SHEET No
A-101

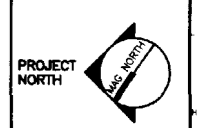
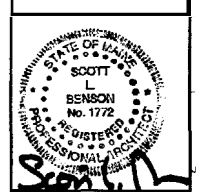
PROCESS PRINT

GENERAL NOTES:

SEE G1001 FOR PROJECT GENERAL NOTES



ARCHITECTURE ENGINEERING PLANNING
S.M.R.T.
144 Fore Street, P.O. Box 418
Portland, Maine 04104
Tel.: (207) 772-3846
Fax: (207) 772-1079



UNIVERSITY OF SOUTHERN MAINE
SULLIVAN GYMNASIUM RENOVATIONS
PORTLAND, MAINE
PROJECT TITLE:
CURRENT ISSUE STATUS:
**ISSUED FOR PERMITTING/PRICING
8-25-06**

REFLECTED CEILING NOTES

1. FIRE SPRINKLERS SHALL BE LOCATED IN ALIGNMENT WITH OTHER CEILING ITEMS, TYPICALLY.
2. FIRE SPRINKLERS SHALL BE CENTERED IN CEILING TILE.
3. FIRE SPRINKLERS SHALL BE PLACED IN COORDINATE WITH LIGHT FIXTURE POSITIONS INDICATED.
4. ALIGN CEILING ITEMS AS SHOWN, WITH COMMON CENTERLINES, TYPICALLY, CENTER ITEMS IN CEILINGS, OR IN AREAS UNLESS INDICATED OTHERWISE.
5. REFER TO ROOM FINISH SCHEDULE FOR CEILING HEIGHTS AND CEILING FINISHES TO BE PROVIDED.
6. EXCEPT WHERE INDICATED, CENTER CEILING GRIDS IN ROOMS. USE HALF TILES OR GREATER PERIMETERS AS POSSIBLE.

SYMBOL LEGEND

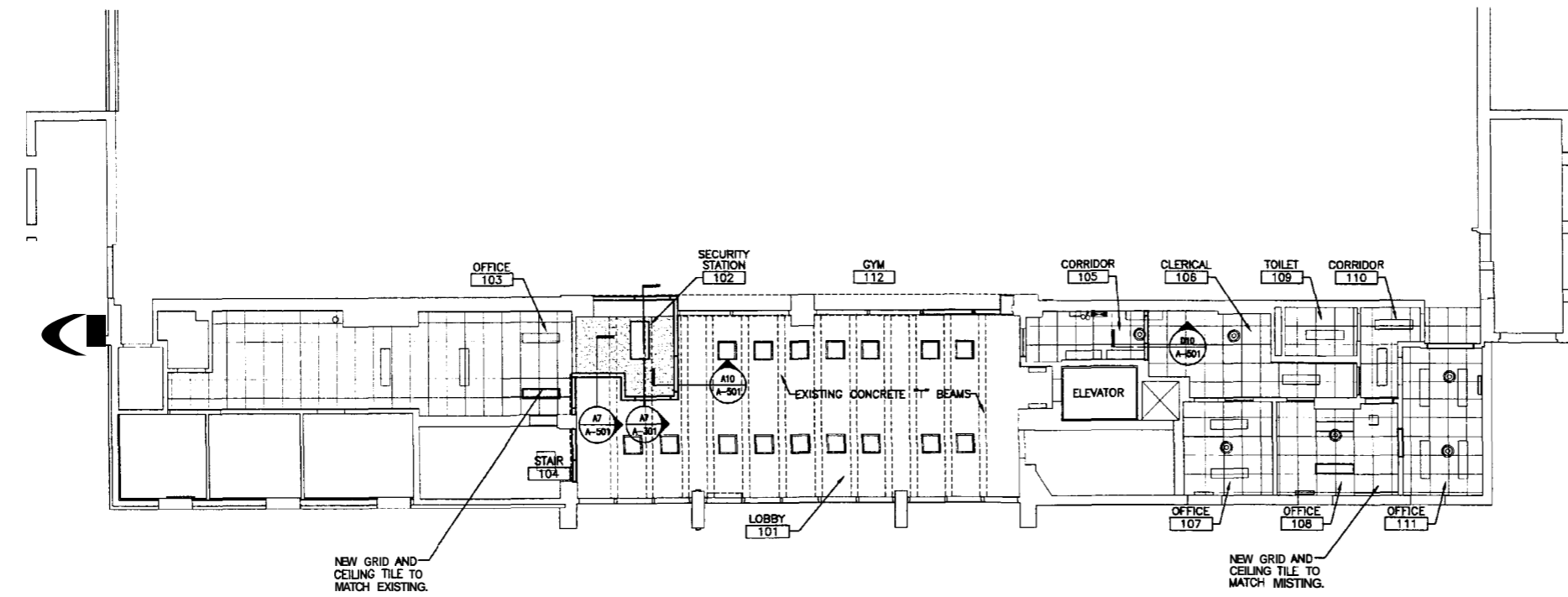
- 2x4 SUSPENDED CEILING PANEL AND GRID ASSEMBLY.
- GWB CEILING.
- 2x2 LAY-IN LIGHT FIXTURE.
- 2x4 LAY-IN LIGHT FIXTURE.
- 1x4 LIGHT FIXTURE.
- FLOURESCENT STRIP FIXTURE.
- DOWN LIGHT.
- CEILING MOUNTED EXIT LIGHT.
- RETURN AIR GRILLE.
- SUPPLY AIR GRILLE.
- EXHAUST AIR GRILLE.
- SPRINKLER HEM.
- CEILING MOUNTED SPEAKER.
- CEILING MOUNTED SMOKE DETECTOR.

REV	DESCRIPTION	DATE
0	ISSUED FOR PERMITTING/PRICING	8-25-06

GRAPHIC SCALE:
0" 1"
SCALE: AS NOTED
PROJECT MANAGER: SLB
JC/DRAWN BY: TCM/TCM
A/E OF RECORD: SLB
CAD FILE: A-102-06104
PROJECT NO: 06104
DATE: 8-25-06
SHEET TITLE:

PLANS
SHEET No.
A-102

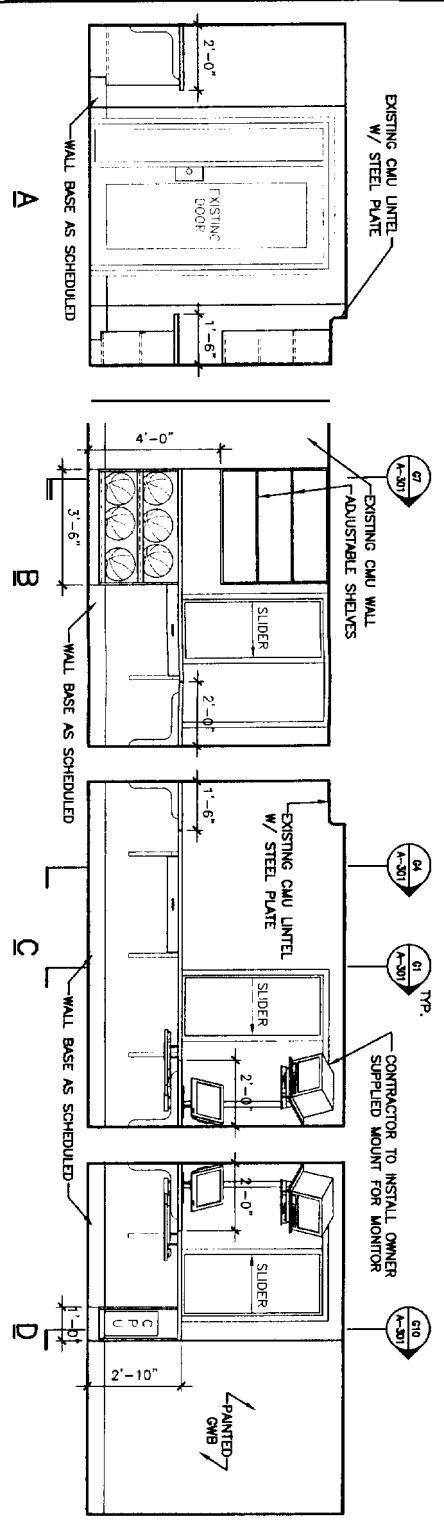
G1 -



A1 REFLECTED CEILING PLAN
1/8" = 1'-0"

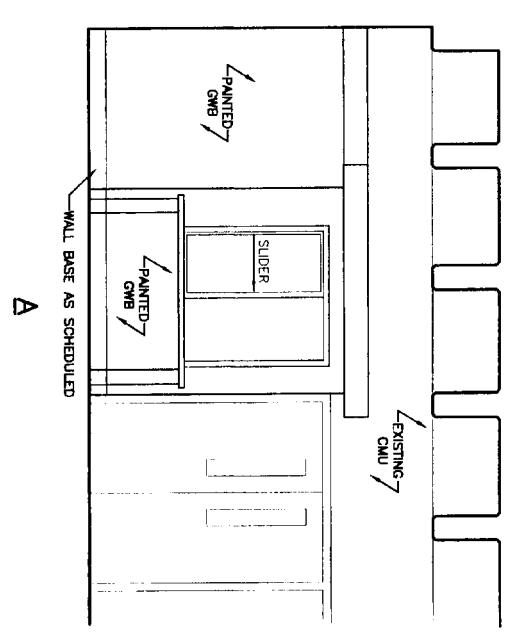
GENERAL NOTES:

1. SEE 0001 FOR PROJECT GENERAL NOTES



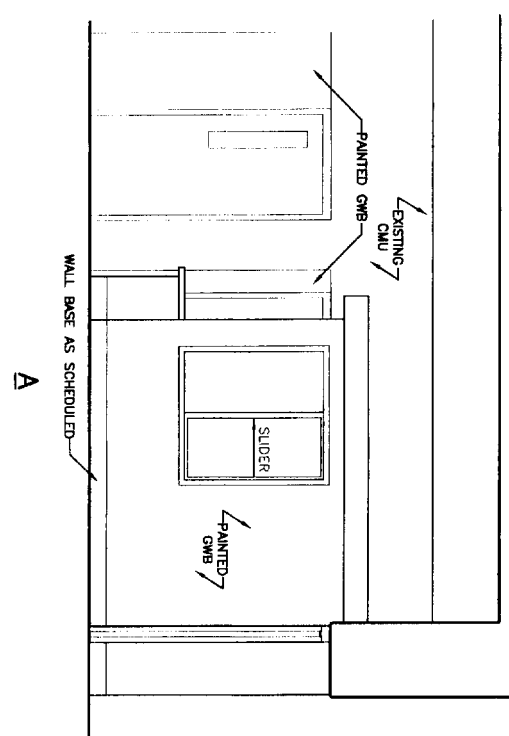
J5 INTERIOR ELEVATION - SECURITY STATION 102

3/8" = 1'-0"



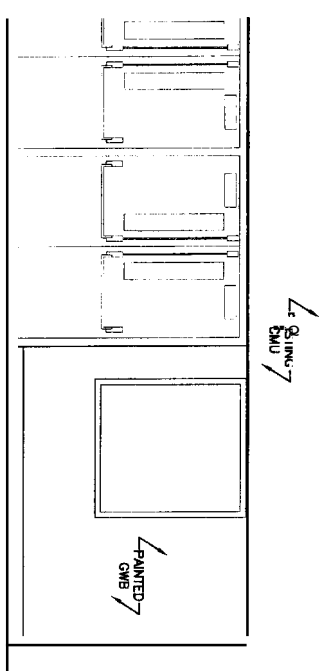
E5 INTERIOR ELEVATION - LOBBY 101

3/8" = 1'-0"



E9 INTERIOR ELEVATION - LOBBY 101

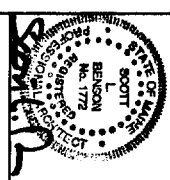
3/8" = 1'-0"



A9 INTERIOR ELEVATION - GYM 112

3/8" = 1'-0"

J1	-	J5	INTERIOR ELEVATION - SECURITY STATION 102
E1	-	E5	INTERIOR ELEVATION - LOBBY 101
A1	-	A5	INTERIOR ELEVATION - LOBBY 101
		A9	INTERIOR ELEVATION - GYM 112



ARCHITECTURE ENGINEERING PLANNING
 SMRT
 144 Fore Street/P.O. Box 618
 Portland, Maine 04104
 tel. (207) 772-3846
 fax. (207) 772-1070

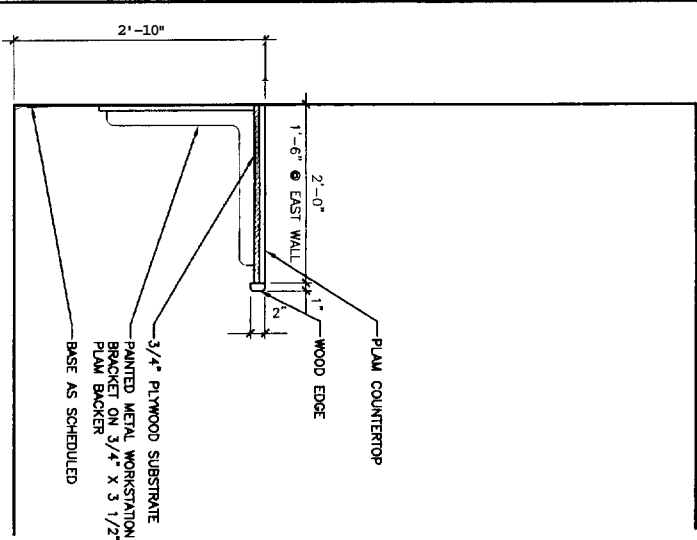


**UNIVERSITY OF SOUTHERN MAINE
 SULLIVAN GYMNASIUM RENOVATIONS**
 PORTLAND, MAINE

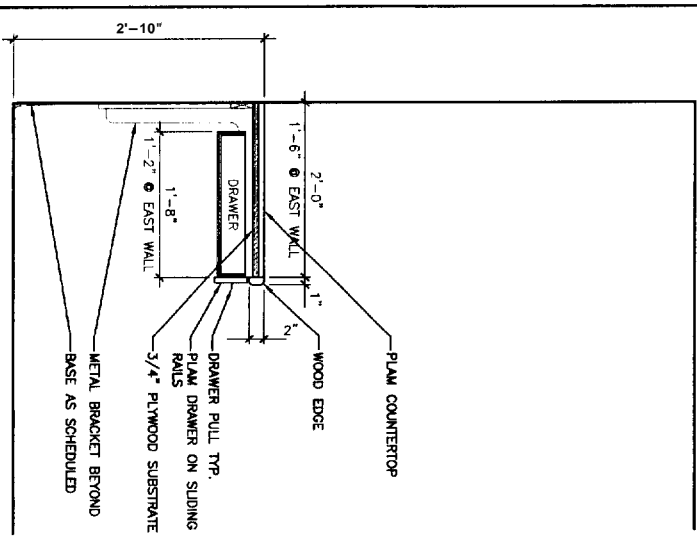
**ISSUED FOR PERMITTING/PRICING
 8-25-08**

PROJECT TITLE:	UNIVERSITY OF SOUTHERN MAINE SULLIVAN GYMNASIUM RENOVATIONS	
CURRENT ISSUE STATUS:	ISSUED FOR PERMITTING/PRICING 8-25-08	
DATE:	8-25-08	
REV:	DESCRIPTION DATE	
0	ISSUED FOR PERMITTING/PRICING	8-25-08

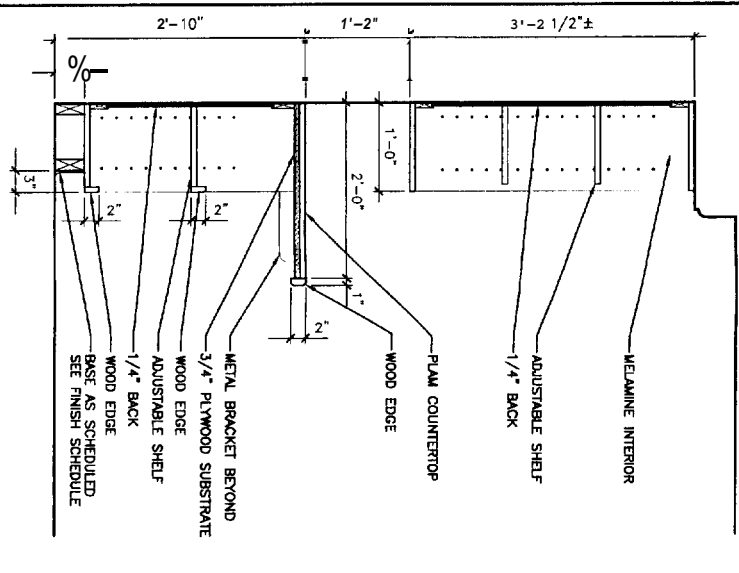
SHEET NO. **A-201**



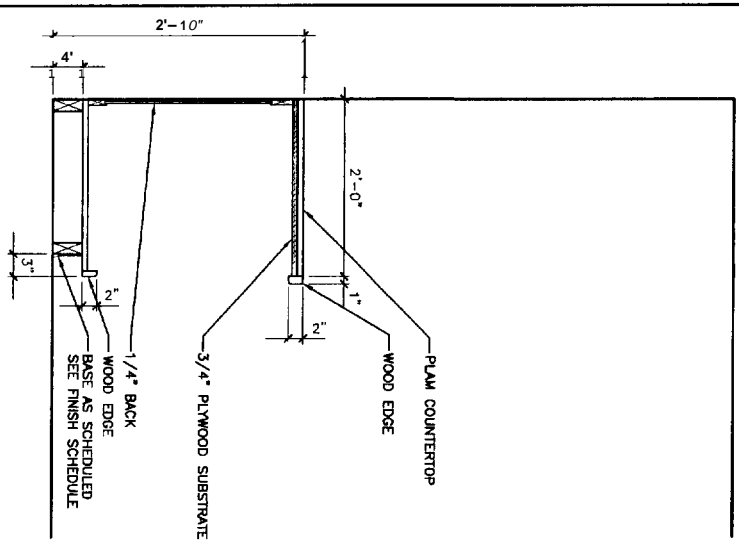
G1 MILLWORK SECTION
1/2" = 1'-0"



G4 MILLWORK SECTION
1/2" = 1'-0"



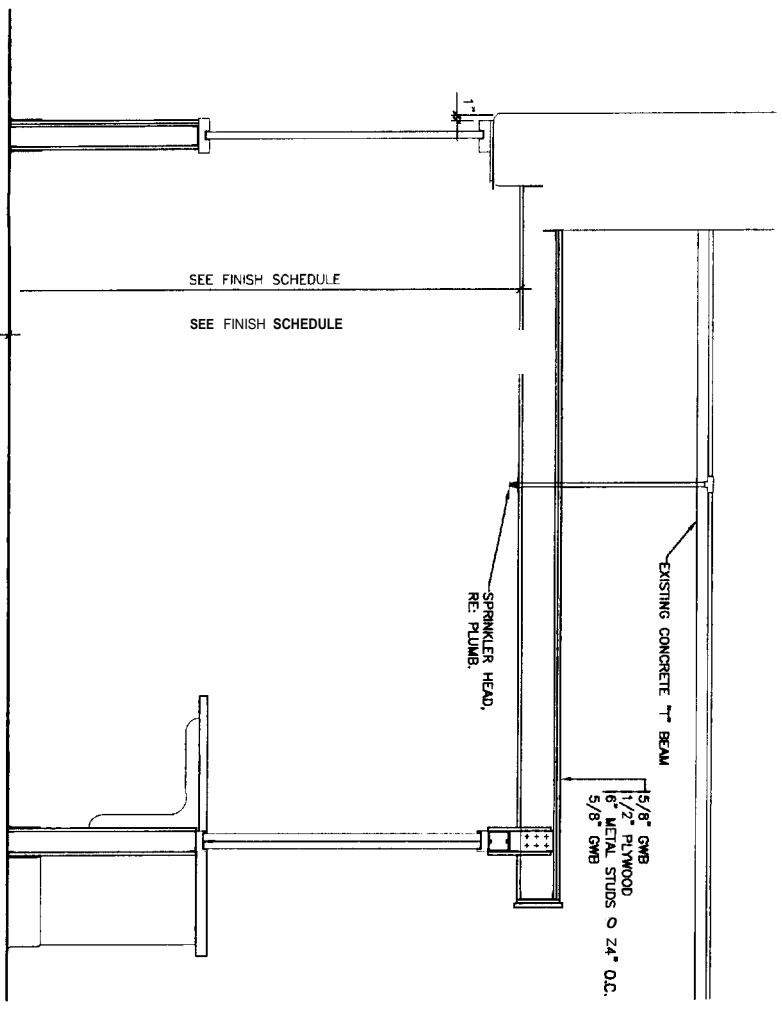
G7 MILLWORK SECTION
1/2" = 1'-0"



G10 MILLWORK SECTION
1/2" = 1'-0"

D1	-	D4	-
	.		.

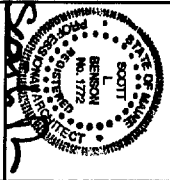
A1	-	A4	-
.	.	.	.



A7 SECTION @ SECURITY STATION
3/4" = 1'-0"



ARCHITECTURE ENGINEERING PLANNING
SMRT
144 Fore Street/P.O. Box 618
Portland, Maine 04104
tel. (207) 772-3846
fax. (207) 772-1070



**UNIVERSITY OF SOUTHERN MAINE
SULLIVAN GYMNASIUM RENOVATIONS**
PORTLAND, MAINE
CURRENT ISSUE STATUS:
**ISSUED FOR PERMITTING/PRICING
8-25-06**

REV	DESCRIPTION	DATE
0	ISSUED FOR PERMITTING/PRICING	8-25-06

SECTIONS
SHEET No. **A-301**

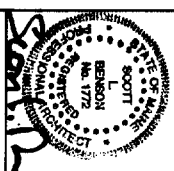
GENERAL NOTES:

1. SEE G001 FOR PROJECT GENERAL NOTES



ARCHITECTURE ENGINEERING PLANNING

SHRIT
144 Fore Street/P.O. Box 618
Portland, Maine 04104
tel. (207) 772-3846
fax. (207) 772-1070



PROJECT TITLE:
**UNIVERSITY OF SOUTHERN MAINE
SULLIVAN GYMNASIUM RENOVATIONS**
PORTLAND, MAINE

CURRENT ISSUE STATUS:
ISSUED FOR PERMITTING/PRICING
8-25-08

REV	DESCRIPTION	DATE
0	ISSUED FOR PERMITTING/PRICING	8-25-08

GRAPHIC SCALE:
0' 1'

SCALE: AS NOTED

PROJECT MANAGER: SLB

CD/DESIGNER: TCD/TCL

A/E OR RECORD: SLB

CAD FILE: A-501-08104

PROJECT NO.: 08104

DATE: 8-25-08

SHEET TITLE:

SECTIONS & DETAILS

SHEET NO. A-501

<p>K1 HEAD DETAIL</p>	<p>K4 HEAD DETAIL</p>	<p>K7 HEAD DETAIL</p>	<p>K10 HEAD DETAIL</p>
<p>G1 JAMB DETAIL</p>	<p>G4 JAMB DETAIL</p>	<p>G7 PLAN DETAIL</p>	<p>G10 JAMB DETAIL</p>
<p>D1 SILL DETAIL</p>	<p>D4 SILL DETAIL</p>	<p>D7 PLAN DETAIL</p>	<p>D10 SECTION</p>
<p>A4 PLAN DETAIL</p>	<p>A7 SECTION</p>	<p>A10 SECTION</p>	<p>A1 SECTION</p>

SCHEDULE NOTES:

- ① NEW VCT AT DEMO'D AREAS.
- ② RESILIENT BASE AT NEW CONSTRUCTION & AREAS OF REPAIR.
- ③ CONTINUE MISTING GRID & TILE THROUGH DEMO'D AREA.
- ④ RE-USE DOOR & FRAME. SEE HARDWARE SET FOR ACCESSORIES TO REMAIN OR REPLACE.
- ⑤ PATCH QUARRY TILE WHERE NEEDED.
- ⑥ RE-USE EXISTING HARDWARE.
- ⑦ RE-USE MISTING DOOR AND FRAME, NEW HARDWARE.
- ⑧ MATCH EXISTING FRAME MATERIAL AND SIZE.

ROOM FINISH SCHEDULE											
ROOM NUMBER	ROOM NAME	FLOOR	BASE	WALLS				CEILING		ROOM NUMBER	REMARKS
				NORTH	SOUTH	EAST	WEST	MATERIAL	HEIGHT		
101	LOBBY	EXIST*	EXIST	PT GWB & EXIS	EXIST	PT GWB	EXIST	EXIST	EXIST	101	*SEE NOTE (5)
102	SECURITY STATION	EXIST	RB	PT EXIST	PT GWB	PT GWB	PT GWB	GWB	7'-8"	102	
103	OFFICE	VCT*	RB**	EXIST	PT GWB & EXIS	EXIST	PT GWB & EXIS	EXIST***	EXIST	103	*SEE NOTES (1) (2) (3)
104	STAIR	VCT*	RB*	EXIST	PT GWB & EXIS	PT GWB	PT GWB	EXIST	EXIST	104	*SEE NOTES (1) (2)
105	CORRIDOR	VCT	RB	EXIST	PT GWB	EXIST	EXIST	EXIST	EXIST	105	
106	CLERICAL	VCT	RB	PT GWB & EXIS	EXIST	EXIST	PT EXIST	EXIST	EXIST	106	
107	OFFICE	EXIST	EXIST	EXIST	EXIST	EXIST	EXIST	EXIST	EXIST	107	
108	OFFICE	EXIST	EXIST	EXIST	PT GWB & EXIS	PT GWB & EXIS	EXIST	ACT	EXIST	108	
109	TOILET	EXIST	EXIST	EXIST	EXIST	PT EXIST	EXIST	EXIST	EXIST	109	
110	CORRIDOR	EXIST	EXIST	EXIST	EXIST	EXIST	PT GWB & EXIS	EXIST	MIST	110	
111	OFFICE	EXIST	EXIST	PT GWB & EXIS	MIST	PT GWB & EXIS	MIST	EXIST	MIST	111	
112	GYM	MIST	RB*	EXIST	EXIST	EXIST	EXIST	MIST	EXIST	112	*SEE NOTE (2)

DOOR SCHEDULE													
DOOR NUMBER	DOOR				GLAZING	FRAME				HWS	FIRE RATING (MIN.)	DOOR NUMBER	REMARKS
	SIZE	MATERIAL	ELEVATION			MATERIAL	ELEVATION	HEAD	JAMB				
101a	2'-9"x7'-0"x1 3/4" (2)	HM	NL2	EXIST	HM*	2	K7/A-501	-	-	-	*	101a	*SEE NOTES (6) (8)
101b	2'-9"x7'-0"x1 3/4"	HM	NL2	EXIST	HM*	1	K7/A-501	D7/A-501	-	-	1	101b	
101c	EXIST	EXIST	EXIST	EXIST	EXIST	EXIST	EXIST	EXIST	-	-	*	101c	RE-LOCATE HANDICAP DOOR OPERATOR
102	EXIST	EXIST	EXIST	EXIST	EXIST	EXIST	EXIST	EXIST	-	-	2	102	
103	3'-0"x7'-0"x1 3/4" *	HM	FG	EXIST	HM*	3	K10/A-501	G10/A-501	-	-	2	103	*SEE NOTE (4)
104	3'-0"x7'-0"x1 3/4" *	HM	NL1	EXIST	HM*	3	K10/A-501	G10/A-501	-	-	3	104	*SEE NOTE (4)
106	3'-0"x3'-6"x1 3/4" (2)*	WD	D	N/A	HM*	3	K10/A-501	G10/A-501	-	-	EXIST	106	*SEE NOTE (4)

GENERAL NOTES:

SEE G001 FOR PROJECT GENERAL NOTES

DOOR ABBREVIATIONS

AL/ALUM	ALUMINUM
HM	HOLLOW METAL
INS	INSULATED
S/S	STAINLESS STEEL
STL	STEEL
TEMP	TEMPERED GLASS
WIRE	WIRE GLASS

DOOR NOTES

- SEE SPECIFICATIONS FOR HARDWARE SET DESCRIPTIONS.
- SEE TITLE SHEET G001 FOR STANDARD ABBREVIATIONS.
- ALL SWINGING DOORS TO BE 1-3/4" THICK (JNO).
- ALL DOORS SHALL BE 3/4" UNDERCUT (TYPICAL) EXCEPT WHEN THERE IS A BOTTOM FRAME OR SILL THRESHOLD OR SPECIFICALLY NOTED OTHERWISE.
- ALL DOORS WITH BOTTOM FRAMES OR SILL THRESHOLDS SHALL HAVE MANUFACTURERS RECOMMENDED STANDARD UNDERCUT.
- GLAZING NOTED ON DOOR SCHEDULE IS FOR THE DOOR AND SIDELIGHTS IN THE FRAME (TYPICAL).

FINISH ABBREVIATIONS

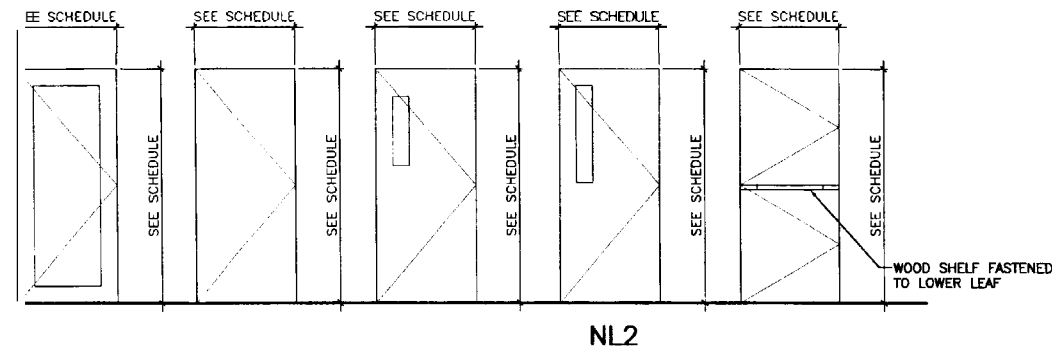
ACT	ACOUSTICAL CEILING TILE
B.O.S.	BOTTOM OF STRUCTURE
CBM	CEMENT BOARD
CLF	CARPENTRY FENCE
CPT	
CT	CERAMIC TILE
U P	EXPOSED STRUCTURE
GWB	GYP/WALLBOARD
INS	INSULATED PANELS
INS PNL	METAL ACOUSTICAL SECURITY CEILING
MAC	PRE-CAST PANELS
PC	PRE-FINISHED BY MANUFACTURER
PF	
PTD	PAINTED
QT	QUARRY TILE
RES	RESIN
VCT	VINYL TILE

FINISH NOTES:

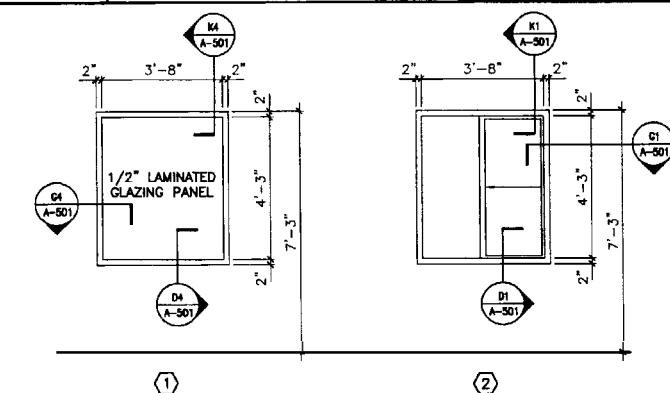
- SEE SPECIFICATIONS FOR ADDITIONAL INFORMATION REGARDING FINISH MATERIALS.
- REFER TO PARTITION LEGEND FOR TYPE OF GWB COMPOSITION REQUIRED. *ABUSE RESIST. *MOISTURE RESISTANT* OR OTHER (TYPICAL).

G1 SCHEDULES

NONE

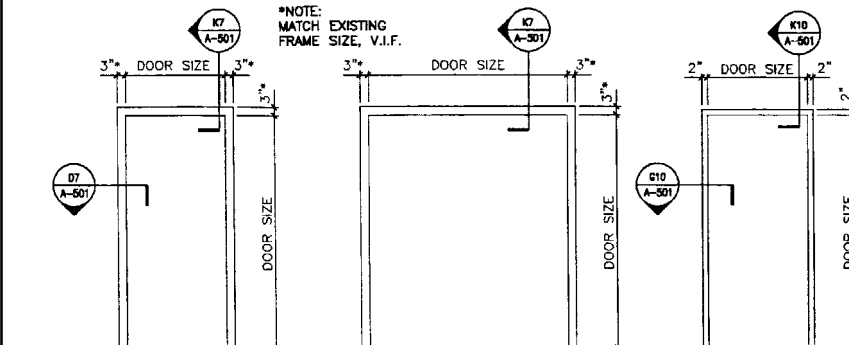


D1 - D4



A1 WINDOW FRAME ELEVATIONS

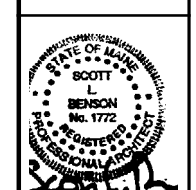
D7 DOOR TYPE ELEVATIONS



A7 DOOR FRAME ELEVATIONS



ARCHITECTURE ENGINEERING PLANNING
144 Fore Street P.O. Box 618
Portland, Maine 04104
Tel: (207) 772-3646
Fax: (207) 772-1070



UNIVERSITY OF SOUTHERN MAINE
SULLIVAN GYMNASIUM RENOVATIONS
PORTLAND, MAINE
CURRENT ISSUE STATUS:
ISSUED FOR PERMITTING/PRICING
8-25-06

GRAPHIC SCALE:	0" = 1"
CALC:	AS NOTED
PROJECT MANAGER:	SLB
DESIGNER/DRAWN BY:	TCM/TCM
DATE OF RECORD:	SLB
NO. FILE:	A-501-061
PROJECT NO.:	06104
DATE:	8-25-06
SHEET TITLE:	

SCHEDULES & DETAILS
SHEET No. **A-601**

AIR DISTRIBUTION SYMBOLS

	RECTANGULAR DUCT (FIRST NUMBER IS SIDE SHOWN) DIMENSIONS IN INCHES
	12 INCH ROUND DUCT
	MOTORIZED DAMPER
	FLEXIBLE DUCT
	DUCT FLEXIBLE CONNECTOR (FC)
	DUCT DROPS AND RISES IN DIRECTION OF AIR FLOW
	RETURN DUCT TURNED UP OR DOWN (DASHED)
	SUPPLY DUCT TURNED UP OR DOWN (DASHED)
	EXHAUST DUCT TURNED UP OR DOWN (DASHED)
	ACOUSTICAL LINING (DUCT DIM. FOR NET FREE AREA)
	ROUND DUCT ELBOW DOWN
	ROUND DUCT ELBOW UP
	SQUARE TO ROUND TRANSITION
	CAP (DUCT AND/OR PIPE)
	INDICATES DUCT, PIPING, EQUIPMENT TO BE REMOVED.
	EA EXHAUST AIR
	RA RETURN AIR
	SA SUPPLY AIR
	VOLUME DAMPER
	FIRE DAMPER
	SMOKE DAMPER
	COMBINATION SMOKE/FIRE DAMPER
	RECTANGULAR ELBOW W/TURNING VANES
	DIRECTION OF AIR FLOW (IN)
	DIRECTION OF AIR FLOW (OUT)
	HUMIDISTAT OR HUMIDITY SENSOR
	THERMOSTAT (T-STAT) OR TEMP. SENSOR
	SMOKE DETECTOR
	DIFFUSER, REGISTER OR GRILLE TAG
	CFM AIR FLOW QUANTITY
	FINNED TUBE TAG
	LENGTH OF FINNED ELEMENT
	DETAIL NO. SHEET NO. WHERE DETAIL IS LOCATED
	EQUIPMENT TAG EQUIPMENT NO.

PIPING SYSTEMS

101 HF	10:1 HF	GR	GRAVITY STEAM CONDENSATE RETURN	MV	MEDICAL VACUUM	TWS	TEMPERED CHILLED WATER SUPPLY
AV	ACID VENT	GLY	GLYCOL	NZNP	NON-PROCESS NITROGEN	TWR	TEMPERED CHILLED WATER RETURN
AD	ACID DRAIN	GV	GAS VENT	H2	PROCESS NITROGEN	VAC	PLANT VACUUM
AD	ACID DRAIN (BELOW SLAB)	H	HYDROGEN	NG	NATURAL GAS	ZB	ZONE VALVE BOX
BA	BREATHING AIR	H2O2	HYDROGEN PEROXIDE	HNG	HIGH PRESSURE NATURAL GAS	TEMP	DOMESTIC HOT WATER (TEMP 'F)
CD	CONDENSATE DRAIN	HCR	HOT/ CHILLED WATER RETURN	NO2	NITROUS OXIDE	TEMP	RECIRC. DOMESTIC HOT WATER (TEMP 'F)
CCA	COMPRESSED DRY AIR	HCS	HOT/ CHILLED WATER SUPPLY	NEG. SOLV.	NEGATIVE SOLVENT DRAIN		DOMESTIC COLD WATER
CHWS	CHILLED WATER SUPPLY	HCV	HOUSE CLEAN VACUUM	NPW	NON POTABLE COLD WATER		DOMESTIC HOT WATER
CHWR	CHILLED WATER RETURN	HG	HOT GAS	O2	OXYGEN	RCW	RECIRCULATED DOMESTIC HOT WATER
CWS	CONDENSER WATER SUPPLY	HPS	HIGH PRESSURE STEAM	DFA	OIL FREE COMPRESSED AIR	S, W or KW	S SANITARY. W WASTE & KW KITCHEN WASTE
CWR	CONDENSER WATER RETURN	HPR	HIGH PRESSURE CONDENSATE RETURN	PCWR	PROCESS COOLING WATER RETURN	S, W or KW	S SANITARY. W WASTE & KW KITCHEN WASTE (MIST.)
CB	DISTRIBUTION VALVE BOX	HWS	HOT WATER SUPPLY	PC	WMPED STEAM CONDENSATE	S, W or KW	S SANITARY. W WASTE & KW KITCHEN WASTE (BELOW SLAB)
DIS	DEIONIZED WATER SUPPLY	HWR	HOT WATER RETURN	PD	PUMPED DISCHARGE	S, W or KW	S SANITARY. W WASTE & KW KITCHEN WASTE (BELOW SLAB-EXIST.)
DIR	DEIONIZED WATER RETURN	IAD	ISOPROPYL ALCOHOL DRAIN	POS. SOLV.	POSITIVE SOLVENT DRAIN	SD	SD STORM DRAIN
EKOD	EK DRAIN	LPG	LIQUID PROPANE GAS	PW	POTABLE WATER	SD	SD STORM DRAIN (MET.)
ESEW	EYEWASH	HLP	HIGH PRESSURE LIQUID PROPANE GAS	R	RELIEF LINE	SD	SD STORM DRAIN (BELOW SLAB)
FCS	FREE COOLING SUPPLY	LPS	LOW PRESSURE STEAM	RL	REFRIGERANT LIQUID	SD	SD STORM DRAIN (BELOW SLAB-EXIST.)
FCR	FREE COOLING RETURN	LPR	LOW PRESSURE RETURN	RS	REFRIGERANT SUCTION	V	V SANITARY VENT
FOS	FUEL OIL SUPPLY	M	MEDICAL AIR	SLD	MIXED SOLVENT DRAIN	V	V SANITARY VENT (EXIST.)
FOR	FUEL OIL RETURN	MPS	MEDIUM PRESSURE STEAM	SV	SOLVENT	V	V SANITARY VENT (BELOW SLAB)
FOV	FUEL OIL VENT	MPR	MEDIUM PRESSURE RETURN	SP	SPRINKLER	V	V SANITARY VENT (BELOW SLAB-EXIST.)

PIPING SYMBOLS

	UNION		ORIFICE FLOWMETER
	FLANGE		FLEXIBLE PIPE CONNECTOR
	PIPE ANCHOR		EXPANSION JOINT
	PIPE GUIDE OR SLEEVES		STEAM TRAP (FLOAT AND THERMOSTATIC INDICATED TO THERMOSTAT, BT, BUCKET TRAP, TD, THERMODYNAMIC TRAP)
	PIPE ELBOW TURNED DOWN		CONCENTRIC REDUCER/INCREASER
	PIPE ELBOW TURNED UP		ECCENTRIC REDUCER/INCREASER
	PIPING TEE-DOWN		HOSE BIBB
	PIPING TEE-UP		WALL HYDRANT
	PIPE RISER		DIRECTION OF FLOW
	FLOOR CLEAN OUT		FIRE DEPARTMENT CONNECTION
	CLEAN OUT		PUMP
	WALL CLEAN OUT		WATER HAMMER SUPPRESSER
	PIPE PITCHES DOWN		FINNED TUBE BASEBOARD
	GENERIC VALVE - SEE SPECIFICATIONS FOR TYPE		DIFFERENTIAL PRESSURE TRANSMITTER
	GATE VALVE		SPRINKLER HEAD
	BALL VALVE		GAS TURRET
	BUTTERFLY VALVE (MANUAL)		MEDICAL OXYGEN OUTLET
	2-WAY C O W L VALVE		MEDICAL VACUUM INLET
	3-WAY C O W L VALVE		MEDICAL AIR OUTLET
	BALANCING VALVE (CIRCUIT SETTER)		NITROUS OXIDE OUTLET
	CHECK VALVE		
	PLUG VALVE		
	GLOBE VALVE		
	NEEDLE VALVE		
	BACK FLOW PRMNTER		
	SOLENOID VALVE		
	PRESSURE REDUCING OR REGULATING VALVE		
	PRESSURE RELIEF VALVE		
	STRAINER		
	STRAINER W/BLOWDOWN		
	MANUAL AIR VENT		
	AUTOMATIC AIR VENT		
	PRESSURE SWITCH		
	FLOW SWITCH		
	PRESSURE GAUGE AND COCK		
	THERMOMETER AND WELL		
	TEMPERATURE & PRESSURE TAP (PETE'S PLUG)		
	HOSE END DRAIN VALVE WITH CAP		

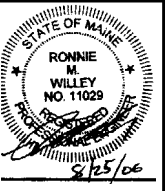
ABBREVIATIONS

AAV	AUTOMATIC AIR VENT	DIW	DOWN IN WALL	OA	OUTSIDE AIR
ACC	AIR COOLED CONDENSER	DN	DOWN	DBD	OPPOSED BLADE DAMPER
ACU	AIR CONDITIONING UNIT	DS	DOWNSPOUT	OED	OPEN ENDED DUCT
AD	ACCESS DOOR	DT	DROP AND TRANSITION	P-#	PLUMBING FIXTURE TAG
AE	ACID EXHAUST	DWG	DRAWING	PAE	PROCESS ACID EXHAUST
AFF	ABOVE FINISHED FLWR	DWH	DOMESTIC WATER HEATER	PHE	PROCESS HEAT EXHAUST
AFWS	AIR FLOW MEASURING STATION	EA	EXHAUST AIR	PSE	PROCESS SOLVENT EXHAUST
AHU	AIR HANDLING UNIT	EF	EXHAUST FAN	PP	POLY-PROWE
AP	ACCESS PANEL	ENC	ENCLOSURE	PPE	PRE PURCHASED EQUIPMENT
ATC	AUTOMATIC TEMPERATURE CONTROL	ER	EXHAUST REGISTER	PRS	PRESSURE REDUCING STATION
AV	AIR VENT	(E)	EXISTING	PRV	PRESSURE REDUCING VALVE
BA	BREATHING COMPRESSED AIR	EXIST.	EXISTING	PVD	PNEUMATIC VOLUME DAMPER
BB	BASEBOARD	FBG	FURNISHED BY OWNER	(R)	REMOVE
EDD	BACKDRAFT DAMPER	FBP	FACE AND BYPASS	M	RETURN AIR
BG	BLAST GATE	FC	FLEXIBLE CONNECTION	RD	ROOF DRAIN
BFP	BACKFLOW PRMNTER	FCC	FLOOR CLEANOUT	(REL.)	RELOCATED
BLDG	BUILDING	FD-#	FLOOR DFVN TAG	RF	RETURN FAN
BOD	BOTTOM OF DUCT	FD	FIRE DAMPER	RG	RETURN GRILLE
BOP	BOTTOM OF PIPE	FG	FIBERGLASS	RHC	REHEAT COIL
BTU	BRITISH THERMAL UNIT	F & T	FLOAT AND THERMOSTATIC	RM	ROOM
CBG	COUNTER BALANCED DAMPER	FO	FLAT OVAL	RPZ	REDUCED PRESSURE ZONE BFP
CD	CEILING DIFFUSER	FRHB	FREEZE RESISTANT HOSE BIBB	RR	RETURN REGISTER
CF	CAPPED FOR FUTURE	FTR	FINNED TUBE RADIATION	RV	RUEF VALE
CFM	CUBIC FEET PER MINUTE	FS	FLOW SWITCH	SA	SUPPLY AIR
CLG	CEILING	GC	GENERAL CONTRACTOR	SCV	SELF CONTAINED VALVE
CO	CLEANOUT	GPM	GALLONS PER MINUTE	SD	SMOKE DETECTOR
CONT	CONTINUATION	H	HUMIDIFIER	SF	SUPPLY FAN
CWRD	CWRDINATE	HB	HOSE BIB	SG	SUPPLY GRILLE
CP	CONDENSATE PUMP & RECENER	HRU	HEAT RECOVERY UNIT	SR	SUPPLY REGISTER
CT	COOLING TOWER	HTR	HEATER	SS	STAINLESS STEEL
CTE	CONNECT TO EXISTING	H & V	HEATING AND VENTILATION	TE	TEMPERATURIZED ELEMENT (SENSOR)
CU	COPPER	HVAC	HEATING, VENTILATING AND AIR CONDITIONING	TG	TRANSFER GRILLE
CUH	CABINET UNIT HEATER	HW	HOT WATER	TOD	TOP OF DUCT
CV	CONTROL VALVE	HX	HEAT EXCHANGER	TOP	TOP OF PIPE
CW	COLD WATER	IN WG	INCHES WATER GAUGE	TTS	TIGHT TO STEEL
CW-P	CITY WATER-PROCESS	LD	LINED DUCT	TV	TURNING VANE(S)
DC	DOUBLE CONTAINED	MAU	MAKE UP AIR UNIT	TYP	TYPICAL
DDC	DIRECT DIGITAL CONTROL	MAX	MAXIMUM	UH	UNIT HEATER
DIA	DIAMETER	MBH	1000 BTU/HR.	UIC	UP IN CHASE
DIC	DOWN IN CHASE	ME	MECHANICAL ENGINEER	UW	UP IN WALL
		MFR	MANUFACTURER	UV	UNIT VENTILATOR
		MIN	MINIMUM	VAV	VARIABLE AIR VOLUME BOX
		MD	MOTOR OPERATED DAMPER	VB	VACUUM BRMR
		MMV	MULTI-PURPOSE VALVE	VTR	VENT THRU ROOF
		MTD	MOUNTED	VD	MANUAL VOLUME DAMPER
		MUA	MAKE UP AIR	VCF	VALVED AND CAPPED FOR FUTURE
		NPW	NON-POTABLE WATER	VOC	VOLATILE ORGANIC COMPOUNDS
		NTS	NOT TO SCALE	VFD	VARIABLE FREQUENCY D.R.M
		P-#	PLUMBING FIXNRE TAG	W/	WITH
		PEA	ALKALI EXHAUST	WCO	WALL CLEANOUT
		PEH	HEAT EXHAUST	WH	WALL HYDRANT

GENERAL NOTE
 1. ALL GENERAL NOTES, SYMBOL LISTS, AND DETAILS ARE TO BE CONSIDERED AS APPLICABLE TO ALL HVAC AND PLUMBING DRAWINGS FOR THIS PROJECT. SYMBOLS AND ABBREVIATIONS SHOWN ON THIS SHEET ARE FOR REFERENCE ONLY AND DO NOT INDICATE THEIR INCORPORATION INTO THE DESIGN.



ARCHITECTURE ENGINEERING PLANNING
 SMART
 144 Fore Street/P.O. Box 618
 Portland, Maine 04104
 Tel. (207) 772-3344
 Fax. (207) 772-1070



UNIVERSITY OF SOUTHERN MAINE
 SULLIVAN GYMNASIUM RENOVATIONS
 PORTLAND, MAINE
 CURRENT ISSUE STATUS:
ISSUED FOR PERMITTING/PRICING
 8-25-06

REV.	DATE	DESCRIPTION
0	8-25-06	ISSUED FOR PERMITTING/PRICING

GRAPHIC SCALE:
 0" 1"

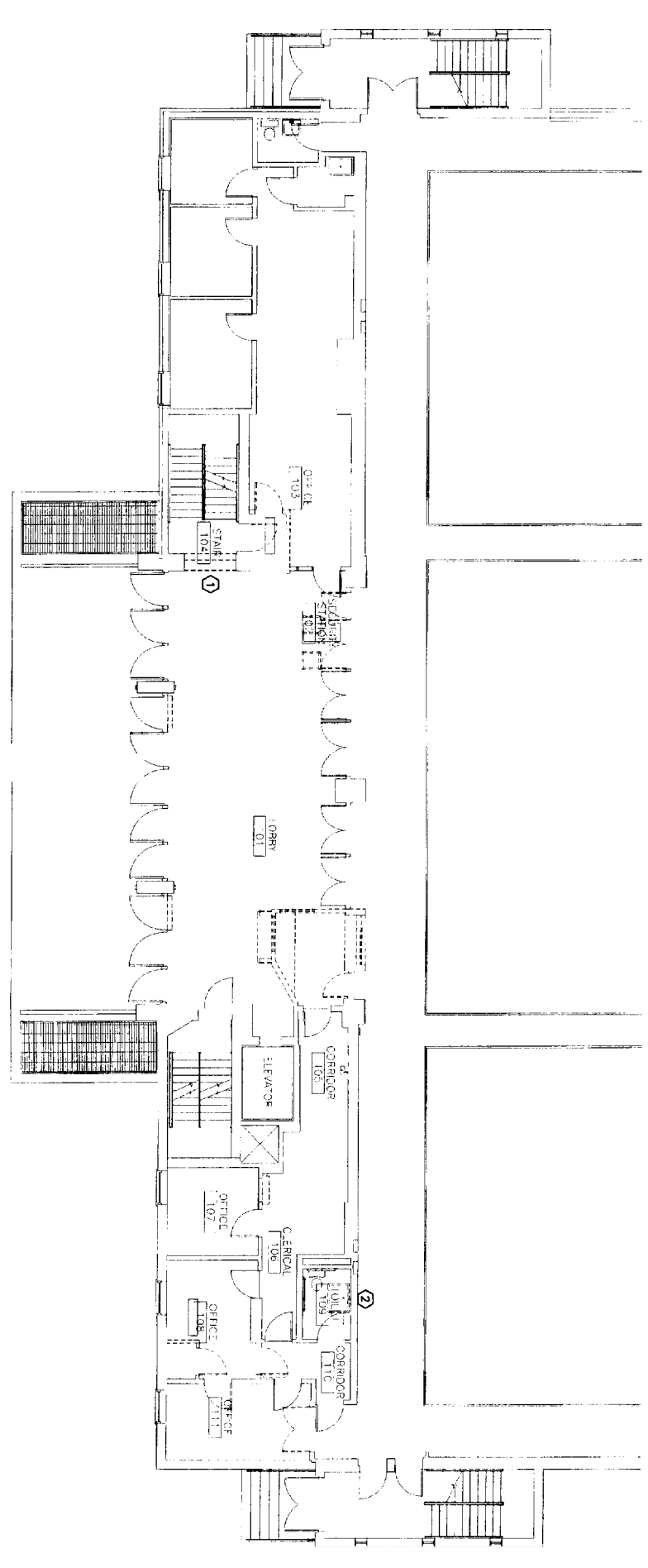
DATE: AS NOTED
 PROJECT MANAGER: SLB
 DRAWN BY: TCM/
 CHECKED BY: RMW
 W. FILE: M-001-06104
 PROJECT NO: 06104
 DATE: 8-25-06
 SHEET TITLE

LEGEND & ABBREVIATIONS
 SHEET No. **M-001**

PROCESS PRINT

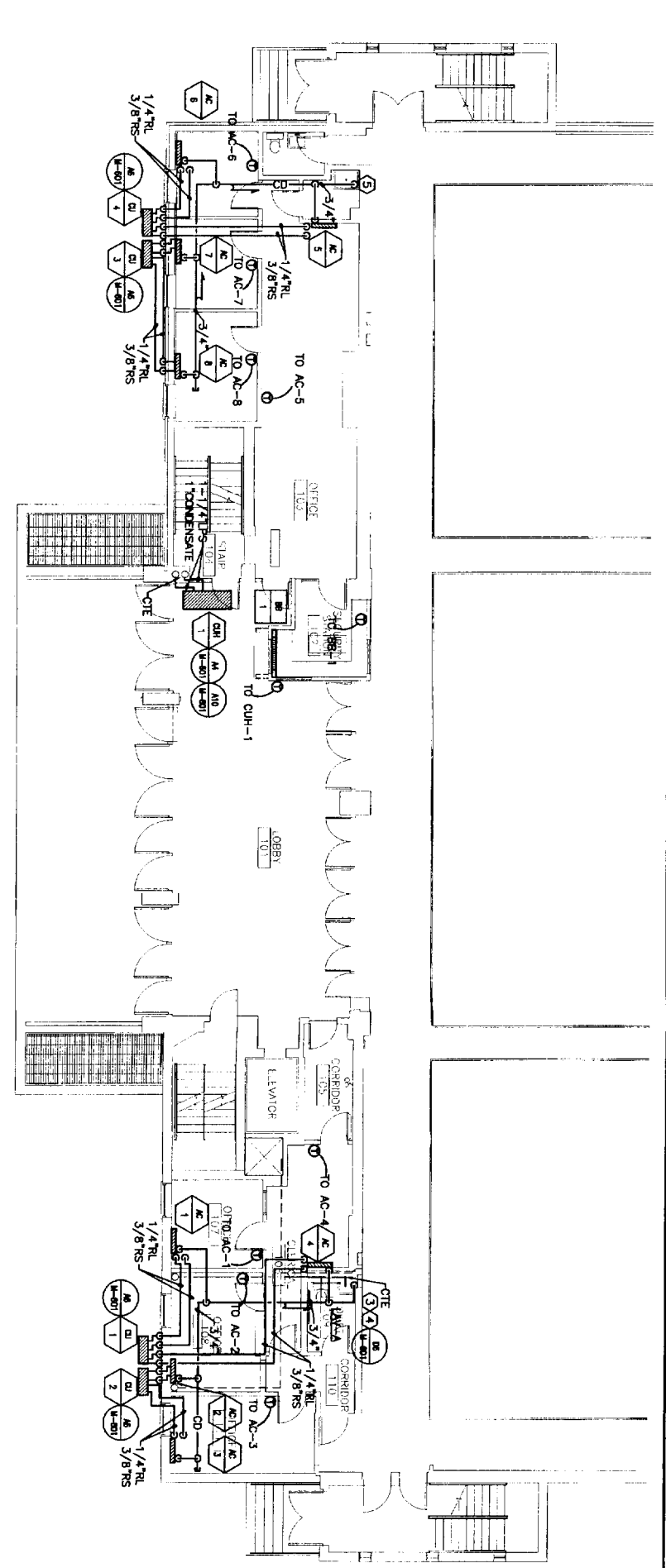
A1 DEMOLITION PLAN

1/8" = 1'-0"



G1 FLOOR PLAN

1/8" = 1'-0"



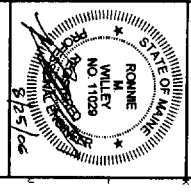
NOTE:
 1. SEE SHEET M-001 FOR LEGEND AND ABBREVIATIONS.
 2. CONDENSATE DRAIN PIPING TO BE TYPE L COPPER INSULATE WITH FLEXIBLE ELASTOMER.

KEYED NOTES:

- ① REMOVE EXISTING CUH; PREPARE PIPING FOR RECONNECTION OF CUH-1. MODIFY PIPING AS REQUIRED FOR ROUTING TO NEW CUH-1. REMOVALS SHALL INCLUDE ALL HANGERS, FASTENERS AND ASSOCIATED PARTS AND PIECES COMPLETE.
- ② REMOVE EXISTING INDUSTRIAL SINK. PREPARE PIPING FOR INSTALLATION AND CONNECTION TO NEW LAW-A. CUT SANITARY TO BELOW SLAB, CAP AND PATCH FLOOR TO MATCH.
- ③ SAW CUT FLOOR AS REQUIRED TO CONNECT NEW LAW-A DRAIN TO EXISTING SANITARY. CONNECT LAW-A DRAIN TO EXISTING IN CHASE.
- ④ CONDENSATE DRAIN TO TAIL PIECE ROUTE UNDER LAW-A. SLOPE DRAIN AT 1/8" PER FOOT. SEE DETAIL.
- ⑤ ROUTE CONDENSATE DRAIN TO JANITORS SINK. SLOPE DRAIN AT 1/8" PER FOOT.



ARCHITECTURE ENGINEERING PLANNING
 SWRT
 144 Fore Street/P.O. Box 618
 Portland, Maine 04104
 tel. (207) 772-3846
 fax. (207) 772-1070



PROJECT TITLE:
**UNIVERSITY OF SOUTHERN MAINE
 SULLIVAN GYMNASIUM RENOVATIONS**
 PORTLAND, MAINE

CURRENT ISSUE STATUS:
**ISSUED FOR PERMITTING/PRICING
 8-25-06**

REV	DESCRIPTION	DATE
0	ISSUED FOR PERMITTING/PRICING	8-25-06

SCALE: AS NOTED
 PROJECT MANAGER: SLE
 ITC/DRAWN BY: TCM/SAI
 I/E OF RECORD: RHW
 C/O FILE: M-101-061124
 PROJECT NO.: 06704
 DATE: 8-25-06
 SHEET TITLE:
**HVAC & PLUMBING
 PLANS**

SHEET NO.
M-101

SPECIFICATIONS AND NOTES

- GENERAL: ALL MEASUREMENTS AND EXISTING CONDITIONS IN THE FIELD. GENERAL SCHEMATIC LAYOUT IS INDICATED. ALL OFFSETS, OBSTRUCTIONS, AND EXISTING CONTRIBUTIONS AND CONSTRAINTS MUST BE FIELD VERIFIED.
- INSTALL ALL NEW AND RELOCATED EXISTING COMPONENTS IN ACCORDANCE WITH MANUFACTURER RECOMMENDATIONS, ALL LOCAL CODES AND STANDARDS.
- PERFORM PLUMBING WORK PER THE MAINT. MANUAL, PLUMBING RULES.
- COORDINATE ELECTRICAL POWER REQUIREMENTS FOR ALL MOTORS.
- THIS RENOVATION WORK WILL TAKE PLACE IN AN OCCUPIED BUILDING. INSTALLATIONS SHALL NOT AFFECT OPERATIONS. HOURS AVAILABLE TO PERFORM WORK (PREMIUM TIME) WILL NEED TO BE COORDINATED WITH THE UNIVERSITY OF SOUTHERN MAINE.
- SEAL ALL DUCT AND PIPE PENETRATIONS WITH FIRE SEALANT.
- EQUIPMENT LISTED IS THE BASIS OF DESIGN, OR APPROVED EQUAL.

PLUMBING PIPING

- PLUMBING FIXTURES
- FIXTURES TO BE COMMERCIAL GRADE, LOW CONSUMPTION, AND ADA COMPLIANT WHERE INDICATED ON THE PLANS AND WHERE REQUIRED BY CODE.
- LAVIDORES TO BE WALL MOUNTED WITH SENSOR OPERATED FAUCETS.
- WATER CLOSURES (OR APPROVED EQUALS):

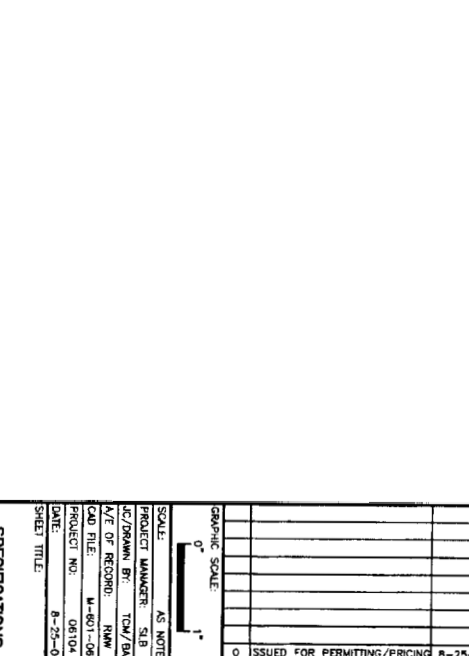
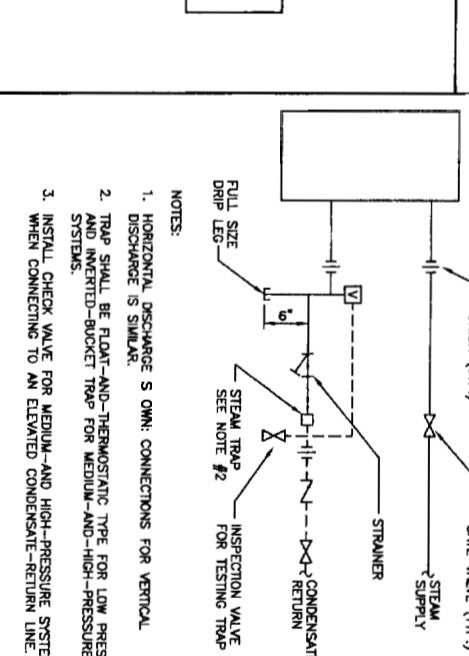
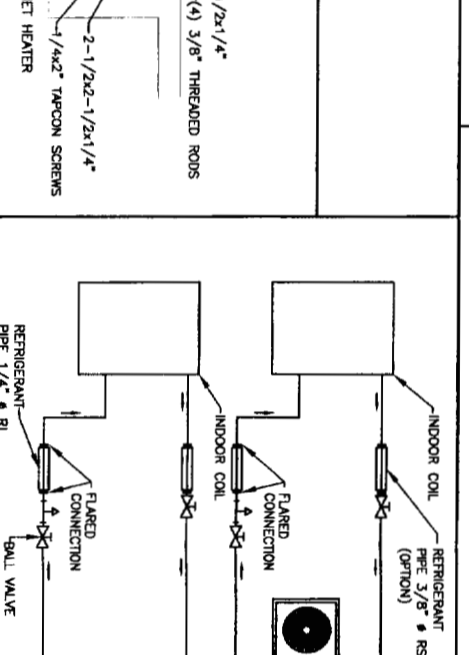
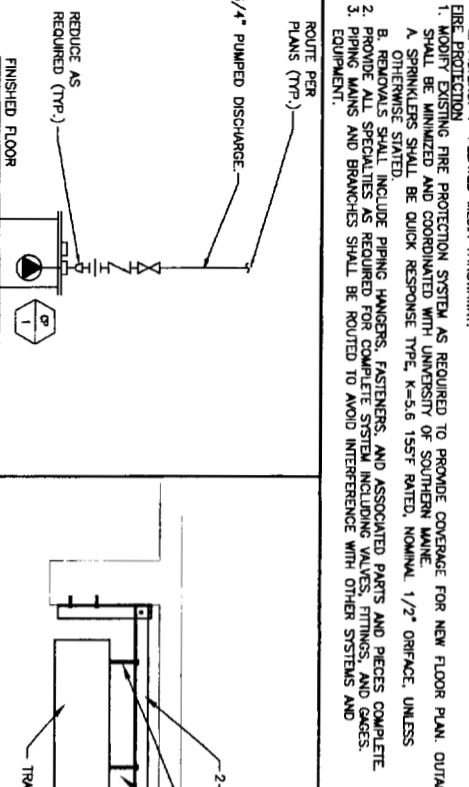
 1. VITREOUS CHINA, CHICAGO SYMBOLS SPECIMAN.
 2. FAUCETS: CHICAGO SYMBOLS SPECIMAN.
 3. CARRIERS AND SUPPORTS: ZURIN, CHICAGO, MCQUIRE

ERING, INSULATION

- FIBERGLASS INSULATION WITH ALL SERVICE JACKET, 25 FLAME SPREAD, 90 SMOKE DEVELOPED.
- DOMESTIC HOT WATER: RUNOUTS TO FIXTURES: 1/2" THICKNESS.
- DOMESTIC COLD WATER: RUNOUTS TO FIXTURES: 1/2" THICKNESS.
- LOW PRESSURE STEAM AND CONDENSATE:
 1. PIPING UP TO 1: 1/4" AND GREATER: 2" THICK
 2. REFRIGERANT PIPING: INSULATE WITH FLEXIBLE ELASTOMERIC EQUAL TO ARIMATEX. PROVIDE PVC COVER ON ALL OUTSIDE PIPING.

WALL-MOUNTED UNIT-SPLIT AIR CONDITIONING UNIT (SEE SCHEDULE ON PLANS)

- EVAPORATOR-FAN COMPONENTS
 - A. CABINET: ENAMELED STEEL WITH REMOVABLE PANELS ON FRONT AND ENDS IN COLOR SELECTED BY ARCHITECT, AND DISCHARGE DRAIN PANS WITH DRAIN CONNECTION.
 - B. REFRIGERANT COIL: COPPER TUBE, WITH MECHANICALLY BONDED ALUMINUM FINS, COMPLYING WITH ARI 210/240, AND WITH THERMAL-EXPANSION VALVE.
 - C. FAN: DIRECT DRIVE, CENTRIFUGAL FAN.
 - D. FILTERS: PERMANENT, OIL/COALESCER.
 - E. CASING: STEEL, FINISHED WITH BAKED ENAMEL IN COLOR SELECTED BY ARCHITECT, WITH REMOVABLE PANELS FOR ACCESS TO CONTROLS, WEEP HOLES FOR WATER DRAINAGE, AND MOUNTING HOLES IN BASE. PROVIDE BRASS SERVICE VALVES, FITTINGS, AND GAGE PORTS ON EXTERIOR OF CASING.
 - F. COMPRESSOR: HERMETICALLY SEALED WITH CRANKCASE HEATER AND MOUNTED ON VIBRATION ISOLATION. COMPRESSOR MOTOR SHALL HAVE THERMAL- AND CURRENT-SENSITIVE OVERLOAD DEVICES, START CONTROLS, RELAY, AND CONTROLLER.
 - G. MOTOR: PERMANENTLY LUBRICATED, WITH INTEGRAL THERMAL-OVERLOAD PROTECTION.
- CONDENSATE PUMP AND SUMP
 1. TWO-SPEED COMPRESSOR MOTOR WITH MANUAL-RESET HIGH-PRESSURE SWITCH AND AUTOMATIC-RESET LOW-PRESSURE SWITCH.
 2. REFRIGERANT COIL: COPPER TUBE, WITH MECHANICALLY BONDED ALUMINUM FINS, COMPLYING WITH ARI 210/240, AND WITH LIQUID SUBCOOLER.
 3. FAN: ALUMINUM-PROPPELLER TYPE, DIRECTLY CONNECTED TO MOTOR.
 4. MOTOR: PERMANENTLY LUBRICATED, WITH INTEGRAL THERMAL-OVERLOAD PROTECTION.
- ACCELERATING
 - A. THERMOSTAT: LOW VOLTAGE WITH SUBBASE TO CONTROL COMPRESSOR AND EVAPORATOR FAN. PROVIDE THERMOSTAT FOR EACH EVAPORATOR TO ALLOW INDIVIDUAL COMPONENTS.
 - B. AUTOMATIC-RESET THERM TO PREVENT RAPID CYCLING OF COMPRESSOR.
 - C. REFRIGERANT LINE KITS: SOFT-ANNEALED COPPER SUCTION AND LIQUID LINES FACTORY CLEANED, DRIED, PRESSURIZED, AND SEALED. FACTORY-INSULATED SUCTION LINE WITH FLARED FITTINGS AT BOTH ENDS.
 - D. PROVIDE CONDENSATE PUMP WITH EACH EVAPORATOR INDOOR UNIT.
- CABINET UNIT HEATER (SEE SCHEDULE ON PLANS)
 - A. EVAPORATOR-FAN COMPONENTS
 - B. CABINET: ENAMELED STEEL WITH WINGED BOTTOM PANEL. PANEL TO HAVE TAMPERPROOF SCREW FASTENERS AND THERMAL INSULATION. BOTTOM PANEL TO BE BOTTOM STAMPED LOWER TYPE. CABINET SHALL BE ADJUSTED AND THERMALLY INSULATED CALL FOR MECHANICALLY BONDED TO 1" COPPER TUBE. SINGLE ROW TUBE IN TUBE DISTRIBUTING TYPE.
 - C. FAN: FORWARD CURVE ALUMINUM CENTRIFUGAL FAN, WHEEL TO BE BURST TESTED TO 280 PSIG.
 - D. MOTOR: PERMANENT SPILT CAPACITOR TYPE WITH INTEGRAL THERMAL OVERLOAD PROTECTION. MOTORS TO BE CAPABLE OF STARTING AT 78% OF RATED VOLTAGE AND RUNNING AT 90% OF RATED VOLTAGE ON ALL SPEED SETTINGS.
 - E. FILTERS: 1" PLEATED MEDIA THROWAWAY.
- ERECTION/PROTECTION
 - A. ALL PIPING, PER PROTECTION SYSTEM AS REQUIRED TO PROVIDE COVERAGE FOR NEW FLOOR PLAN, OUTGAGES SHALL BE INSTALLED AND COORDINATED WITH UNIVERSITY OF SOUTHERN MAINE.
 - B. SPRINKLERS SHALL BE QUICK RESPONSE TYPE, K-5.8 157F RATED, NOMINAL 1/2" ORIFICE, UNLESS OTHERWISE STATED.
 - C. REMOVALS SHALL INCLUDE PIPING HANGERS, FASTENERS, AND ASSOCIATED PARTS AND PIECES COMPLETE.
 - D. PROVIDE ALL SPECIALTIES AS REQUIRED FOR COMPLETE SYSTEM INCLUDING VALVES, FITTINGS, AND GAGES.
 - E. PIPING MAINS AND BRANCHES SHALL BE ROUTED TO AVOID INTERFERENCE WITH OTHER SYSTEMS AND EQUIPMENT.



PLUMBING FIXTURE SCHEDULE

TAG	DESCRIPTION	FIXTURE	FAUCET/DRAIN	TRIM	SUPPORT	NOTES
LV-A	WALL-HUNG LAVATORY - ADA	AMERICAN STANDARD #0355.012 "LUCERNE" VITREOUS CHINA, 20"x18" (2) HOLES ON 4"	CHICAGO 800-3170P FAUCET, OFFSET FAUCETS, CHROME PLEATED FINISHES	MCQUIRE ANGLE STOPPS P-TRAP, ESCUTCHEONS AND RISERS-CHROME PLEATED	JAY R. SMITH #0700	①

NOTES: ① INSULATE EXPOSED PIPING - TRUEBERG #1026.

SPLIT-SYSTEM SCHEDULE

INDOOR SECTION TAG	OUTDOOR SECTION TAG	TYPE	TOTAL CAPACITY BRUH	EER	INDOOR SECTION			OUTDOOR SECTION			INDOOR SECTION MODEL NO.	OUTDOOR SECTION MODEL NO.	NOTES		
					CFM (DRY) HI-SPEED	FAN V/PH/Hz	FAN RLA	COMP LRA	MCA	V/PH/Hz					
AC-1	CU-1	WALL	8400	9.9	328	0.37	115/1/60	1.0	10	37	15	208/1/60	MITSUBISHI MS09HW	MITSUBISHI MUM1BNW	①
AC-2	CU-1	WALL	8400	9.9	328	0.37	115/1/60	-	-	-	-	-	MITSUBISHI MS09HW	MITSUBISHI MUM1BNW	①
AC-3	CU-2	WALL	8400	9.9	328	0.37	115/1/60	1.0	10	37	15	208/1/60	MITSUBISHI MS09HW	MITSUBISHI MUM1BNW	①
AC-4	CU-2	WALL	8400	9.9	328	0.37	115/1/60	-	-	-	-	-	MITSUBISHI MS09HW	MITSUBISHI MUM1BNW	①
AC-5	CU-3	WALL	8400	9.9	328	0.37	115/1/60	1.0	10	37	15	208/1/60	MITSUBISHI MS09HW	MITSUBISHI MUM1BNW	①
AC-6	CU-3	WALL	8400	9.9	328	0.37	115/1/60	-	-	-	-	-	MITSUBISHI MS09HW	MITSUBISHI MUM1BNW	①
AC-7	CU-4	WALL	8400	9.9	328	0.37	115/1/60	1.0	10	37	15	208/1/60	MITSUBISHI MS09HW	MITSUBISHI MUM1BNW	①
AC-8	CU-4	WALL	8400	9.9	328	0.37	115/1/60	-	-	-	-	-	MITSUBISHI MS09HW	MITSUBISHI MUM1BNW	①

NOTES: ① (2) AC UNITS PER (1) CU UNIT.

CABINET UNIT HEATER SCHEDULE

TAG	LOCATION	TYPE	CFM	HP	MBH	STEAM (LBS/HR)	STEAM PRESSURE (PSI)	WEIGHT (LBS)	VOLT/Ø	TYPICAL UNIT MFG. & MODEL NO.	NOTES
CUH-1	LOBBY	HORIZONTAL CABINET	720	1/8	5.11	53.2	250	115/1	115/1	FTB-120	

NOTES: ① SELECT CONTROL VALVE WITH SUFFICIENT PRESSURE DROP TO SUPPLY 2 PSI STEAM COIL.

ELECTRIC BASEBOARD SCHEDULE

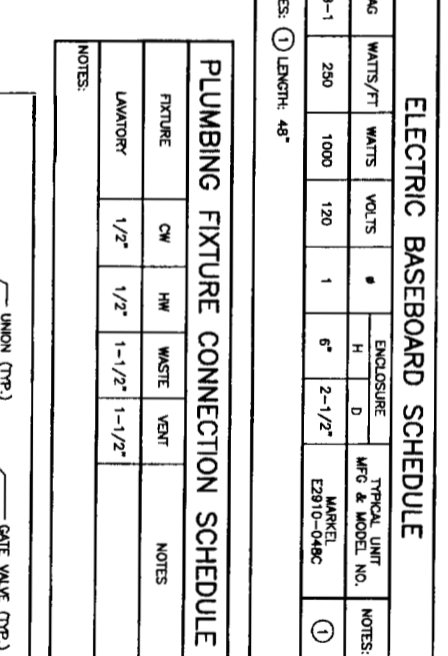
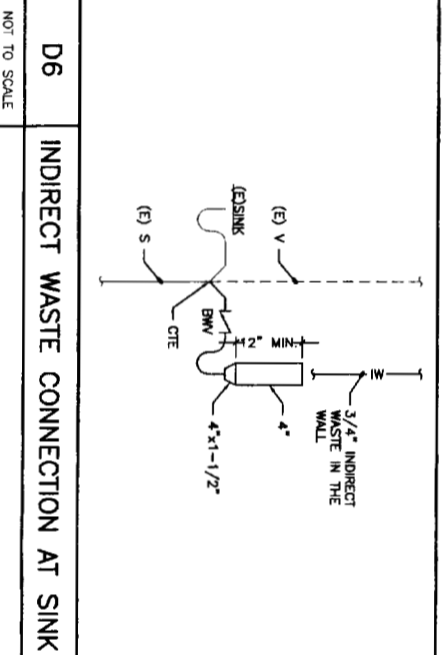
TAG	WATTS/FT	WATTS	VOLTS	Ø	ENCLOSURE H	D	TYPICAL UNIT MFG. & MODEL NO.	NOTES
BB-1	250	1000	120	1	6"	2-1/2"	EG910-D-8RC	①

NOTES: ① LENGTH: 48"

PLUMBING FIXTURE CONNECTION SCHEDULE

FIXTURE	CW	HW	WASTE	VENT	NOTES
LAVATORY	1/2"	1/2"	1-1/2"	1-1/2"	

NOTES:



NOTE:
1. SEE SHEET M-001 FOR LEGEND, ABBREVIATIONS.

PROJECT TITLE:
**UNIVERSITY OF SOUTHERN MAINE
SULLIVAN GYMNASIUM RENOVATIONS**
PORTLAND, MAINE

CURRENT ISSUE STATUS:
ISSUED FOR PERMITTING/PRICING
6-25-06

ARCHITECTURE ENGINEERING PLANNING

SMRT
144 Fore Street/P.O. Box 618
Portland, Maine 04104
tel. (207) 772 3846
fax. (207) 772 1070

SHEET No. **M-601**

DATE: 6-25-06

SCALE: AS NOTED

PROJECT MANAGER: S.L.B.

PROJECT NO.: M-601-0100

DATE: 6-25-06

PROJECT TITLE: **SULLIVAN GYMNASIUM RENOVATIONS**

REVISIONS:

REV	DESCRIPTION	DATE
0	ISSUED FOR PERMITTING/PRICING	6-25-06

LIGHTING

- 2x4 FLUORESCENT FIXTURE ASSOCIATED CONTROL DEVICE FIXTURE TYPE (SEE LIGHT FIXTURE SCHEDULE)
- 1x4 FLUORESCENT FIXTURE
- 2x2 FLUORESCENT FIXTURE
- FIXTURE WIRED TO UNSWITCHED NORMAL CIRCUIT
- FIXTURE WIRED TO UNSWITCHED EMERGENCY CIRCUIT
- FIXTURE WIRED TO SWITCHED EMERGENCY CIRCUIT
- DOWN LIGHT
- FLUORESCENT STRIP
- WALL MOUNTED FIXTURES
- TRACK LIGHTING
- POLE MOUNTED SITE LIGHTING FIXTURE
- FIXTURE TYPE (SEE LIGHT FIXTURE SCHEDULE)
- FLOODLIGHT
- WALL WASH LIGHT FIXTURE
- EXIT SIGN, CEILING MOUNTED, ARROW INDICATES EGRESS DIRECTION, SHADING INDICATES SIGN FACE
- EXIT SIGN, WALL MOUNTED, SHADING INDICATES SIGN FACE
- DUAL H.E.M. EMERGENCY LIGHT BATTERY PACK TD - TIME DELAY RESET
- REMOTE EMERGENCY LIGHTING HEAD
- WALL PACK
- 3-WAY TOGGLE SWITCH
- SINGLE POLE TOGGLE SWITCH INDICATES CONTROLLED FIXTURE
- 4-WAY TOGGLE SWITCH
- DUAL LEVEL SWITCHING
- DIMMER SWITCH, INCANDESCENT OR FLUORESCENT AS REQUIRED.
- TOGGLE SWITCH WITH PILOT LIGHT
- TIMER SWITCH, SPRING WOUND
- SINGLE POLE WOBBLE THROW TOGGLE SWITCH, CENTER POSITION OFF
- WEATHER PROOF
- EXPLOSION PROOF
- OCCUPANCY SENSOR SWITCH
- UNSWITCHED CONTINUATION OF BRANCH CIRCUIT
- HOME RUN
- OCCUPANCY SENSOR INDICATES CONTROLLED FIXTURE INDICATES AIMING DIRECTION
- OCCUPANCY SENSOR RELAY
- DAYLIGHT SENSOR LIGHTS CONTROLLED BY SENSOR

COMMUNICATION & DATA SYSTEMS

- TELEPHONE SYSTEM WALL JACK W-INDICATES WALL MOUNTED AT 60" AFF P-INDICATES PAYPHONE (2)-INDICATES 2 OUTLETS, SINGLE BOX
- DATA SYSTEM OUTLET
- COMBINATION VOICE/DATA SYSTEM OUTLET
- UNDERFLOOR TELEPHONE SYSTEM OUTLET
- UNDERFLOOR DATA SYSTEM OUTLET
- UNDERFLOOR VOICE & DATA OUTLET
- CABLE TELEVISION SYSTEM OUTLET, MOUNT 18" AFF UNLESS OTHERWISE NOTED
- CLOSED CIRCUIT TELEVISION OUTLET, MOUNT 18" AFF UNLESS OTHERWISE NOTED
- PAGING SYSTEM CONTROL PANEL AND PAGING WPU/IFIER
- PAGING SYSTEM SPEAKER, CEILING MOUNTED
- PAGING SYSTEM SPEAKER, WALL MOUNT AT 7'-6" AFF 1. FLUSH, 2. SURFACE, 3. HORN, 4. DUAL HORN
- VOLUME CONTROL
- INTERCOM SYSTEM HAND KEY
- CLOCK SPEAKER
- INTERCOM SYSTEM HAND SET
- WALL MOUNTED CLOCK

POWER

- NDN-FUSED SAFETY SWITCH NEMA ENCLOSURE RATING 30A
- FUSED SAFETY SWITCH, TOP NUMBER INDICATES SWITCH AMPERE RATING, LOWER NUMBER INDICATES FUSE RATING
- NEMA ENCLOSURE
- MAGNETIC MOTOR STARTER, FVNR UNLESS INDICATED OTHERWISE
- NEMA ENCLOSURE RATING
- NEMA SIZE (TYPICAL)
- COMBINATION CIRCUIT BREAKER/MAGNETIC MOTOR STARTER FIRST NUMBER INDICATE CIRCUIT BREAKER AMPERE RATING SECOND NUMBER INDICATES NEMA STARTER SIZE
- COMBINATION FUSED DISCONNECT/MAGNETIC MOTOR STARTER NUMBERS INDICATE DISCONNECT AMPERE RATING/FUSE RATING/NEMA STARTER SIZE
- NON-FUSED DISCONNECT/MAGNETIC MOTOR STARTER FIRST NUMBER INDICATES CIRCUIT BREAKER AMPERE RATING SECOND NUMBER INDICATES NEMA STARTER SIZE
- MANUAL MOTOR STARTER, TOGGLE OPERATED, 12 OR 3 POLE AS REQUIRED, OVERLOAD PROTECTION
- MANUAL MOTOR SWITCH, TOGGLE OPERATED, SINGLE P.M.E., 1 OR 2 POLE AS REQUIRED (NO OVERLOAD PROTECTION)
- ENCLOSED CIRCUIT BREAKER AMPERE RATING
- ELECTRIC MOTOR, NUMBER INDICATES HORSEPOWER RATING
- EXPLOSION PROOF MOTOR
- VARIABLE AIR VOLUME CONTROL ACTUATORS
- LOCAL SELECTOR SWITCH H/O/A - HAND/OFF/AUTO
- EMERGENCY OFF BREAK CLASS STATION
- PUSHBUTTON STATION
- JUNCTION BOX
- TRANSFORMER
- POWER POLE
- CONDUIT TURNING UP
- CONDUIT TURNING DOWN
- FI CONDUIT SEAL
- DUPLEX RECEPTACLE, NEMA 5-20R, INSTALLED ON EMERGENCY CIRCUIT (TYPICAL) GFI DUPLEX RECEPTACLE, NEMA 5-20R
- HOSPITAL GRADE DUPLEX RECEPTACLE, NEMA 5-20R
- HOSPITAL GRADE GFCI DUPLRM RECEPTACLE, NEMA 5-20R
- HOSPITAL GRADE ISOLATED GROUND DUPLRM RECEPTACLE, NEMA 5-20R
- SINGLE RECEPTACLE, NEMA 5-20R
- DOUBLE DUPLEX (QUADRUPLEX) RECEPTACLE, NEMA 5-20R
- HOSPITAL GRADE DOUBLE DUPLEX RECEPTACLE, NEMA 5-20R
- SWITCHED RECEPTACLE
- FLOOR OUTLET, DUPLEX RECEPTACLE, NEMA 5-20R
- POWER RECEPTACLE, 480 VOLT NEMA CONFIGURATION AS NOTED.
- POWER RECEPTACLE, 240 VOLT NEMA CONFIGURATION AS NOTED.
- PANELBOARD, NORMAL POWER
- PANELBOARD, EMERGENCY POWER
- MULTI OUTLET ASSEMBLY

LINE TYPES

- EXISTING
- NEW
- DEMOLITION

FIRE ALARM

- FIRE ALARM CONTROL PANEL
- FIRE ALARM ANNUNCIATOR
- FIRE ALARM MASTER BOX
- FIRE ALARM MANUAL PULL STATION
- FIRE ALARM SPEAKER/STROBE UNIT
- FIRE ALARM AUDIBLE/VISIBLE NOTIFICATION APPL'CE (GENERAL EVACUATION)
- FIRE ALARM AUDIBLE/VISIBLE NOTIFICATION APPL'CE (LOCAL)
- FIRE ALARM VISIBLE ONLY NOTIFICATION APPL'CE CANDLE INTENSITY-15/75 UNLESS OTHERWISE NOTED CEILING MOUNTED
- PHOTOELECTRIC SMOKE DETECTOR, CEILING MOUNTED INDICATES AUXILIARY CONTACT.
- FIXED TEMPERATURE HUT DETECTOR, CEILING MOUNTED, INDICATES EQUIPMENT INTERLOCKED WITH THE DETECTOR
- CLEAN ROOM SMOKE DETECTOR
- INDICATES EQUIPMENT INTERLOCKED WITH THE SMOKE DETECTOR
- COMBINATION RATE-OF-RISE/FIXED TEMPERATURE HUT DETECTOR, CEILING MOUNTED
- DUCT SMOKE DETECTOR, PHOTOELECTRIC WITH AUXILIARY CONTACT.
- SPRINKLER SYSTEM FLOW SWITCH
- SPRINKLER SYSTEM TAMPER SWITCH
- FIRE ALARM SYSTEM MAGNETIC DOOR HOLDER
- INTERLOCK RELAY
- SMOKE DAMPER
- DUCT SMOKE DETECTOR REMOTE 'TEST' INDICATOR
- KNOX BOX

SECURITY SYSTEMS

- 2-WAY CEILING MOUNTED INTERCOM SPEAKER
- CEILING MOUNTED PAGING SPEAKER
- WALL MOUNTED PAGING HORN
- CEILING OR WALL MOUNTED FIXED CAMERA
- CEILING OR WALL MOUNTED PTZ CAMERA
- PAGING CONTROL EQUIPMENT
- INTERCOM MASTER STATION
- DOOR CONTROL EQUIPMENT
- MONITORED DOOR POSITION SWITCH AND CONTROLLED DOOR HARDWARE
- MONITORED DOOR POSITION SWITCH
- STANDARD INTERCOM STATION
- VISITATION TELEPHONE
- WALL MOUNTED DURESS BUTTON
- GRAPHIC CONTROL PANEL
- TOUCH SCREEN WORKSTATION
- CCTV CONTROL OR DISPLAY EQUIPMENT
- PERIMETER CONTROL EQUIPMENT
- DURESS CONTROL EQUIPMENT
- DURESS ALARM RECEIVER
- OFFICER CONTROLLED COLLECT-ONLY PUBLIC TELEPHONE
- OFFICER CONTROLLED FIRE SPRINKLER (DELUGE) HEAD
- DUAL TECHNOLOGY VOLUMETRIC SENSOR
- LOCAL DOOR RELEASE BUTTON
- M.C.E.R. CONTROLLED SHOWER WATER SUPPLY
- M.C.E.R. CONTROLLED LIGHTING AND ELECTRICAL OUTLETS
- DOOR CONTACT
- CARD READER
- KEY PAD
- CLOSED CIRCUIT TELEVISION CAMERA
- ELECTRIC STRIKE
- MAG LOCK

ONE LINE DIAGRAM

- MEDIUM VOLTAGE DRAWOUT CIRCUIT BREAKER
- LOW VOLTAGE DRAWOUT CIRCUIT BREAKER
- AF - AMP FRAME AT - AMP TRIP EO - ELECTRICALLY OPERATED
- MOLDED CASE CIRCUIT BREAKER
- ST - SHUNT TRIP GF - GROUND FAULT EO - ELECTRICALLY OPERATED
- DISCONNECT, ISOLATION OR SAFETY SWITCH
- FUSED CUTOUT
- FUSED LOAD BREAK SWITCH
- MEDIUM VOLTAGE MOTOR STARTER
- MAGNETIC MOTOR STARTER, NUMERAL INDICATES MOTOR SIZE, FVR - FULL VOLTAGE REVERSING RVAT - REDUCING VOLTAGE AUTO TRANSFORMER 2s - TWO SPEED
- CAPACITOR
- VARIABLE FREQUENCY DRIVE
- POWER TRANSFORMER OA - LIQUID TYPE SELF COOLED AA - DRY TYPE SELF COOLED FA - FAN COOLED CONNECTION
- SHIELDED ISOLATION TRANSFORMER
- POTENTIAL TRANSFORMER RATIO NUMBER REQUIRED
- CURRENT TRANSFORMER RATIO NUMBER REQUIRED
- GROUND FAULT CURRENT TRANSFORMER
- MOTOR, NUMBER INDICATE HORSEPOWER
- GENERATOR
- ATS - AUTOMATIC TRANSFER SWITCH MTS - MANUAL TRANSFER SWITCH
- METER A - AMMETER V - VOLTMETER W - WATTMETER WH - WATT HOURMETER KWH - KILOWATT HOUR KVAR - KILOWAR METER VAR - VAR METER PE - POWER ENERGY METER
- DIGITAL POWER METER
- METER TRANSFER SWITCH AS - AMMETER SWITCH VS - VOLTMETER SWITCH
- TRANSIENT VOLTAGE SURGE SUPPRESSOR
- LIGHTNING ARRESTER
- KEY INTERLOCK
- FUSE
- ELECTRONIC POWER FUSE
- DRAWOUT DMCE
- GROUND

ABBREVIATIONS

- | | | | |
|-------|-------------------------------|-------|------------------------------------|
| A.AMP | AMPERE | LA | LIGHTNING ARRESTER |
| AFF | ABOVE FINISHED GRADE | LTC | LIGHTING |
| AFG | AWG | MC | METAL CLAD |
| AHJ | AUTHORITY HAVING JURISDICTION | MCB | MAIN CIRCUIT BREAKER |
| AIC | AMPERE INTERRUPTING CAPACITY | MFR | MANUFACTURER |
| AWG | AMERICAN WIRE GAUGE | MI | MINERAL INSULATED |
| BFG | BELOW FINISHED GRADE | MLO | MAIN LUG ONLY |
| BOS | BOTTOM OF STEEL | MTD | MOUNTED |
| C | CONDUIT, CONDUCTOR | MV | MEDIUM VOLTAGE |
| CAV | CABLE TELEVISION | NC | NEC |
| CB | CIRCUIT BREAKER | NEC | NATIONAL ELECTRICAL CODE |
| CCTV | CLOSED CIRCUIT TELEVISION | NEUT | NEUTRAL |
| CPT | CONTROL TRANSFORMER | NIC | NOT IN CONTRACT |
| CT | COPPER | NO | NORMALLY OPEN |
| CU | COPPER | NFS | NOT TO SCALE |
| DACT | DIGITAL AURM COMMUNICATOR | PF | POWER FACTOR |
| DB | DIRECT BURIED | PH | PHASE |
| DISC | DISCONNECT | PVC | POLYVINYL CHLORIDE |
| DN | DOWN | RCS | RIGID STEEL CONDUIT |
| EMT | ELECTRICAL METALLIC TUBING | RSC | RIGID STEEL CONDUIT |
| EVC | ELECTRICALLY OPERATED | RTD | RESISTANCE TEMPERATURE |
| FAA | FIRE ALARM CONTROL PANEL | SN | SOLID NEUTRAL |
| FAC | FURNISHED BY OTHERS | STP | SHIELDED TWISTED PUR |
| FBO | FURNISHED BY OTHERS | SWBD | SWITCHED TWISTED TRIPLET |
| FU | FURNISHED WITH EQUIPMENT | SWGR | TOP OF STEEL |
| GEN | GENERATOR | TOS | TRANSFORMER |
| GFCI | GROUND FAULT CIRCUIT BREAKER | TRANS | TRANSFORMER |
| GND | GROUND | TVSS | TRANSIENT VOLTAGE SURGE SUPPRESSOR |
| HP | HDRSEPW | V | VOLT |
| HTR | HEATER | VA | VOLT-AMPERE REACTIVE |
| IG | ISOLATED GROUND | VAR | WATT METER |
| IMC | INTERMEDIATE METAL CONDUIT | WF | WEATHER PROOF |
| K | KILOVOLT | WFM | TRANSFORMER |
| KCMIL | THOUSAND CIRCULAR MILS | XP | EXPLOSION PROOF |
| KV | KILOVOLT | | |
| KVA | KILOVOLT-AMPERE | | |
| KVAR | KILOVOLT-AMPERE REACTIVE | | |
| Kw | KILOWATT | | |
| KWH | KILOWATT-HOUR | | |

GENERAL NOTES:

- ALL WORK SHALL BE PERFORMED IN ACCORDANCE WITH NFPA-70, NATIONAL ELECTRICAL CODE (NEC).
- ALL MOTOR SAFETY SWITCHES, DISCONNECTS AND MOTOR STARTERS ARE PROVIDED BY DIVISION 16000 UNLESS NOTED AS FURNISHED WITH EQUIPMENT (FWE).
- UNLESS OTHERWISE NOTED CONVENIENCE RECEPTACLES SHALL BE MOUNTED 18-INCHES AFF. LIGHTING TOGGLE SWITCHES 48-INCHES AFF. DATA SYSTEM OUTLETS 18-INCHES AFF. FIRE ALARM NOTIFICATION DEVICES 80-INCHES AFF OR 6-INCHES BELOW CEILING, WHICHEVER IS LOWER, AND FIRE ALARM MANUAL PULL STATIONS 48-INCHES TO TOP OF DEVICE.
- ALL PENETRATIONS THROUGH FLOORS, RATED WALLS AND PARTITIONS SHALL BE SEALED WITH UL APPROVED FIRE SEALANT MATERIAL TO MAINTAIN THE RATING OF SEPARATION.
- ALL EQUIPMENT GROUNDING CONDUCTOR SHALL BE INSTALLED WITH EVERY FEEDER AND BRANCH CIRCUIT.
- UNLESS OTHERWISE NOTED WIRING SHALL BE 2/12 AWG CONDUCTORS AND #12 GND. HOME RUNS FED FROM 20A-1P CIRCUITS IN EXCESS OF 100 FEET SHALL BE #10 AWG.
- FLEXIBLE CONNECTIONS TO MOTORS SHALL BE LIQUID TIGHT FLEXIBLE METAL CONDUIT, UNLESS OTHERWISE NOTED.
- LIGHTING TOGGLE SWITCHES SHALL BE COMMERCIAL SPECIFICATION GRADE 120 VOLT, SIDE WIRED AND PROVIDED WITH GROUNDING SCREW, LEVITON, PASS AND SEYMOUR OR APPROVED EQUAL COORDINATE COLOR WITH ARCHITECT.
- CONVENIENCE RECEPTACLES SHALL BE COMMERCIAL SPECIFICATION GRADE APPROVED TYPE, NEMA OR BURNHAM TYPE, WITH GROUNDING PASS AND SEYMOUR OR APPROVED EQUAL COORDINATE COLOR WITH ARCHITECT.
- PROVIDE WALL PLATES FOR ALL WIRING DMCS, STAINLESS STEEL IN FINISHED AREAS AND GALVANIZED IN UNFINISHED AREAS.
- ALL WIRING SHALL BE 600V, COPPER WITH THHN/THWN INSULATION.

GENERAL NOTE

1. ALL GENERAL NOTES, SYMBOL LISTS, AND DETAILS ARE TO BE CONSIDERED AS APPLICABLE TO ALL ELECTRICAL DRAWINGS FOR THIS PROJECT. SYMBOLS AND ABBREVIATIONS SHOWN ON THIS SHEET ARE FOR REFERENCE ONLY AND DO NOT INDICATE THEIR INCORPORATION IN THE DESIGN.

ARCHITECTURE ENGINEERING PLANNING
144 Fore Street P.O. Box 618
Portland, Maine 04104
Tel. (207) 772-3846
Fax. (207) 772-1070

PROJECT ORTH

UNIVERSITY OF SOUTHERN MAINE
SULLIVAN GYMNASIUM RENOVATIONS
PORTLAND, MAINE

CURRENT ISSUE STATUS:
ISSUED FOR PERMITTING/PRICING 8-25-08

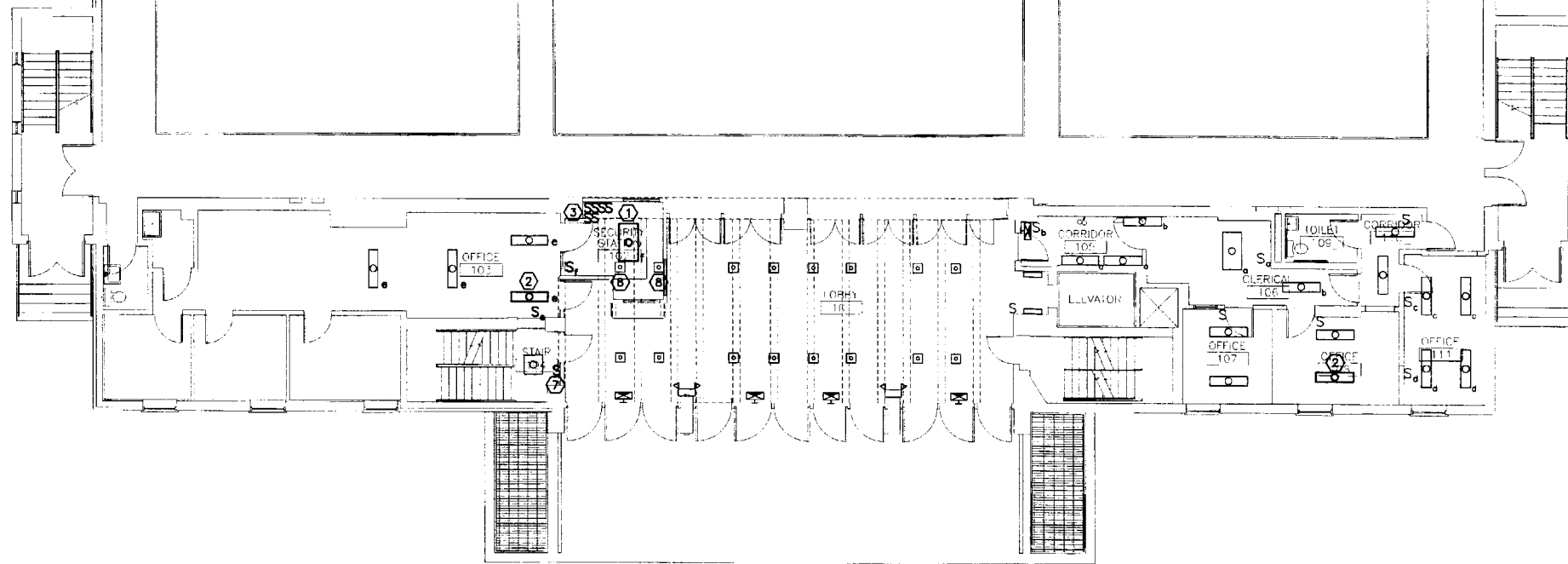
DATE	DESCRIPTION

IPHC SCALE
0"

LE: AS N011
SJECT MANAGER SLB
DRAWN BY TCM/LAM
OF RECORD: JPP
FILE E-001-0610
SJECT # 0 80859406

SET TITLE:
LEGEND & GENERAL NOTES

SET No
E-001



NOTE:

1. SEE SHEET E-001 FOR LEGEND AND GENERAL NOTES

KEYED NOTE:

- ① FURNISH AN FIXTURE (COB LED) LP424-2202G3-LD18-F5-EB8 OR EQUAL). CONNECT TO EXISTING BRANCH CIRCUIT SERVING THE AREA AND CONFIGURE SWITCHING AS INDICATED.
- ② REMOVE EXISTING LIGHT FIXTURE AND REINSTALL IN NEW LOCATION AS INDICATED. CONNECT TO EXISTING LIGHTING BRANCH CIRCUIT SERVING THE AREA. RECONFIGURE EXISTING SWITCHING AS INDICATED.
- ③ REMOVE AND RELOCATE (4) EXISTING SWITCHES TO RACKETBALL/SQUASH COURT LIGHTING AND (2) EXISTING SWITCHES TO FITNESS CENTER LIGHTING AS INDICATED. EXTEND WIRING AS REQUIRED. COORDINATE EXACT NEW LOCATION WITH OWNER.
- ④ EXISTING FIRE ALARM SYSTEM BEAM DETECTOR TO BE REMOVED AND RELOCATED AS INDICATED ON E-102.
- ⑤ EXISTING MOTORIZED DOOR OPERATOR AND PUSH BUTTON CONTROLS TO BE REMOVED AND RELOCATED AS INDICATED ON E-102.
- ⑥ EXISTING FITNESS CENTER DOOR ELECTRIC STRIKE PUSH BUTTON CONTROLS TO BE REMOVED AND RELOCATED AS INDICATED ON E-102.
- ⑦ REMOVE AND REINSTALL MISTING STAIRWELL LIGHTING SWITCH AS INDICATED. EXTEND MISTING WIRING AS REQUIRED.
- ⑧ EXISTING FIXTURES TO BE MAINTAINED ABOVE NEW SECURITY STATION ACCESSIBLE CEILING.
- ⑨ EXISTING CCTV MONITORS, MULTIPLEXER, AND ASSOCIATED EQUIPMENT TO BE REMOVED AND RELOCATED AS INDICATED ON E-102.
- ⑩ EXISTING REMOTE ANNUNCIATOR PANEL TO BE REMOVED AND RELOCATED AS INDICATED ON E-102.

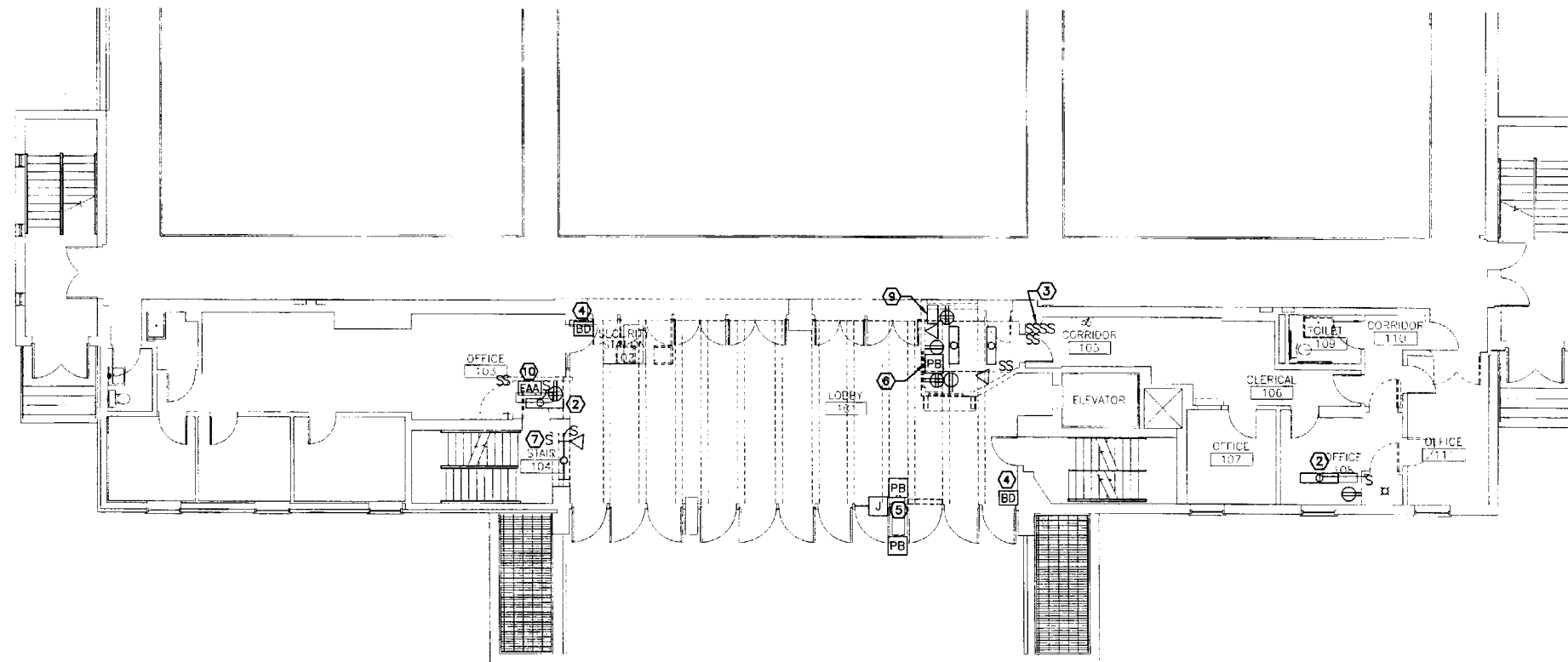
**SM
RT**

ARCHITECTURE ENGINEERING PLANNING
SMART
144 Fore Street P.O. Box 618
Portland, Maine 04104
tel. (207) 772-3846
fax. (207) 772-1070

PROJECT ORTH
N
S
E
W

G1 LIGHTING FLOOR PLAN

1/8" = 1'-0" *



A1 DEMOLITION FLOOR PLAN

1/8" = 1'-0" *

UNIVERSITY OF SOUTHERN MAINE
SULLIVAN GYMNASIUM RENOVATIONS
PORTLAND, MAINE

PROJECT TITLE:
CURRENT ISSUE STATUS:
ISSUED FOR PERMITTING/PRICING 8-25-06

REV.	DESCRIPTION	DATE
0	ISSUED FOR PERMITTING/PRICING	8-25-06

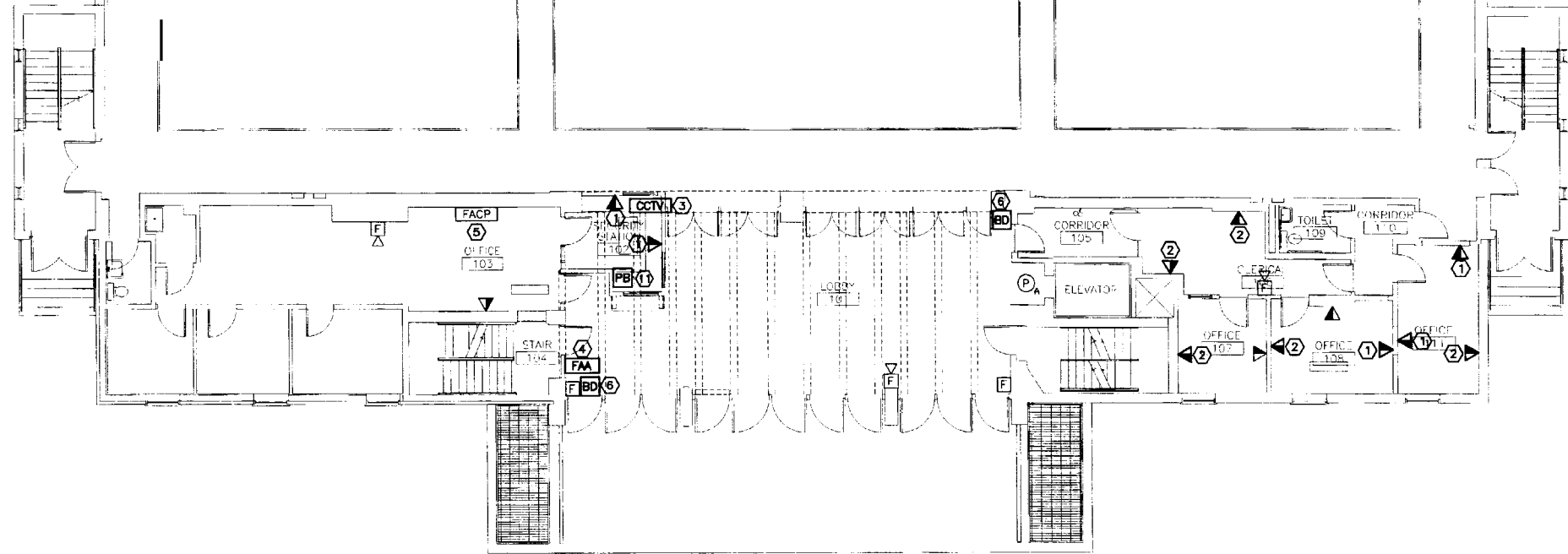
GRAPHIC SCALE:
0' 1'

SCALE: AS NOTED

PROJECT MANAGER: SLB
JC/DRAWN BY: TCM/LAM
A/E OF RECORD: JPP
CAD FILE: E-101-06104
PROJECT NO: 06104
DATE: 8-25-06
SHEET TITLE:

**DEMOLITION &
LIGHTING FLOOR**

ET No.
E-101



NOTE:

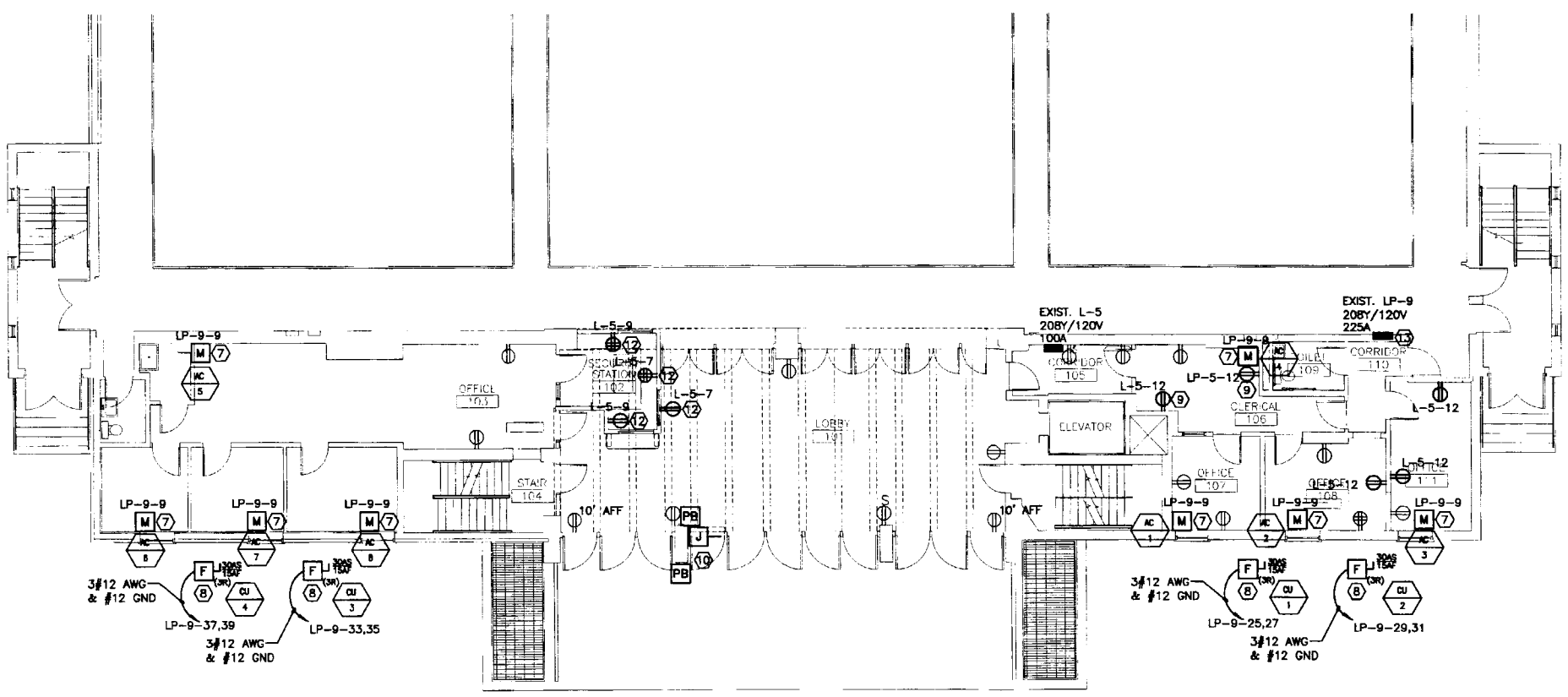
1. SEE SHEET E-001 FOR LEGEND AND GENERAL NOTES

KEYED NOTE:

- ① FURNISH AND INSTALL FLUSH-MOUNT 4" SQUARE BACKBOX WITH 3/4" CONDUIT AND PULLSTRING TO ABOVE ACCESSIBLE CEILING FOR USE BY OWNERS SUBCONTRACTOR.
- ② FURNISH AND INSTALL SURFACE-MOUNT 4" SQUARE BACKBOX WITH SURFACE RACEWAY AND PULLSTRING TO ABOVE ACCESSIBLE CEILING FOR USE BY OWNERS SUBCONTRACTOR. WIREMOLD #NM2000 SERIES OR EQUAL.
- ③ CCTV MONITORS AND ASSOCIATED EQUIPMENT TO BE REINSTALLED AND WIRING EXTENDED FROM EXISTING LOCATIONS. COORDINATE EXACT LOCATION AND ARRANGEMENT OF EQUIPMENT WITH OWNER.
- ④ REINSTALL MISTING ANNUNCIATOR PANEL REMOVED DURING DEMOLITION. M N D MISTING WIRING AS REQUIRED.
- ⑤ MISTING FIRE ALARM CONTROL PANEL TO BE MAINTAINED. ALL SYSTEM MODIFICATIONS INDICATED SHALL BE PERFORMED SO AS TO MAINTAIN A COMPLETE AND OPERABLE SYSTEM.
- ⑥ REINSTALL EXISTING FIRE ALARM SYSTEM BEAM DETECTOR REMOVED DURING DEMOLITION. EXTEND EXISTING WIRING AS REQUIRED.
- ⑦ PROVIDE 120V, 1Ø CONNECTION TO WAC INDOOR UNIT AS INDICATED. COORDINATE WITH MECHANICAL CONTRACTOR AND EXISTING CONDITIONS.
- ⑧ PROVIDE 208V, 1Ø CONNECTION TO WAC OUTDOOR UNIT AS INDICATED. PROVIDE HEAVY DUTY, NEMA-3R FUSED DISCONNECT SWITCH. COORDINATE WITH MECHANICAL CONTRACTOR AND EXISTING CONDITIONS.
- ⑨ PROVIDE RECEPTACLE DMCE IN SURFACE MOUNTED BOX AND RACEWAY. WIREMOLD #NM2000 SERIES OR EQUAL.
- ⑩ NEW LOCATION OF MOTORIZED DOOR OPERATOR. PUSH BUTTON CONTROLS REMOVED DURING DEMOLITION. EXTEND EXISTING BRANCH CIRCUIT AS REQUIRED.
- ⑪ REINSTALL EXISTING FITNESS CENTER DOOR ELECTRIC STRIKE. PUSH BUTTON REMOVED DURING DEMOLITION. EXTEND EXISTING WIRING AS REQUIRED. COORDINATE EXACT LOCATION WITH OWNER.
- ⑫ EXTEND EXISTING BRANCH CIRCUIT WIRING SERVING OLD SECURITY STATION DMCE'S.
- ⑬ APPROXIMATE LOCATION OF EXISTING PANELBOARD LP-9 ONE LEVEL BELOW. PANELBOARD IS LOCATED ADJACENT TO MAIN SWITCHBOARD IN THE MECH/ELEC ROOM. SEE PANEL SCHEDULE FOR ADDITIONAL INFORMATION.

G1 SYSTEMS FLOOR PLAN

1/8" = 1'-0"



A1 POWER FLOOR PLAN

1/8" = 1'-0"



ARCHITECTURE ENGINEERING PLANNING
SMRT
144 Fore Street P.O. Box 618
Portland, Maine 04104
Tel. (207) 772-3846
Fax. (207) 772-1070



UNIVERSITY OF SOUTHERN MAINE
SULLIVAN GYMNASIUM RENOVATIONS
PORTLAND, MAINE
ISSUED FOR PERMITTING/PRICING
8-25-06

REV	DESCRIPTION	DATE
0	ISSUED FOR PERMITTING/PRICING	8-25-06

GRAPHIC SCALE:
0" = 1"
SCALE: AS NOTED
PROJECT MANAGER: SLB
JC/DRAWN BY: TCM/AM
A/E OF RECORD: JPP
CAD FILE: E-102-06104
PROJECT NO: 06104
DATE: 8-25-06
SHEET TITLE:

POWER & SYSTEMS FLOOR PLANS
SHEET No. E-102

NOTE:
1. SEE SHEET E-001 FOR LEGEND AND GENERAL NOTES.

DIRECTORY	KVA LOAD			CTK NO.	AMP	A B C			BKR	AMP	CTK NO.	DIRECTORY
	A	B	C			A	B	C				
(1) ELEV MACH. ROOM				1	20						2	ELEV. ROOM RECEIPT.
(1) ELEV RT LIGHT				3	20						4	ELEV. RT RECEIPT.
(1) ELEV ORN LIGHT				5	20						6	ELEV. ROOM FAN
(1) ELEV RT PLUMB				7	20						8	ELEV. RT PLUMB
SPACE				8	20						10	PLANTROOM LIGHT
SPACE				11	20						12	POWER ASSIST DOOR
SPACE				13	20						14	110V ELEV. CONTROL
SPACE				15	20						18	HVAC RECEIPT.
(1) JOB TRAILER (CFT)				17	100						18	HVAC UNIT (ON ROOF)
(1) MENS SHALVA				19	70						22	
				21	70						23	
				23	70						24	
				25	70						26	
				27	18						28	
				29	18						30	
				31	15						32	
				33	19						34	
				35	19						36	
				37	15						38	
				38	15						40	
				41	14						42	
				42	14						43	
				43	14						44	
				44	14						45	
				45	14						46	
				46	14						47	
				47	14						48	
				48	14						49	
				49	14						50	
				50	14						51	
				51	14						52	
				52	14						53	
				53	14						54	
				54	14						55	
				55	14						56	
				56	14						57	
				57	14						58	
				58	14						59	
				59	14						60	
				60	14						61	
				61	14						62	
				62	14						63	
				63	14						64	
				64	14						65	
				65	14						66	
				66	14						67	
				67	14						68	
				68	14						69	
				69	14						70	
				70	14						71	
				71	14						72	
				72	14						73	
				73	14						74	
				74	14						75	
				75	14						76	
				76	14						77	
				77	14						78	
				78	14						79	
				79	14						80	
				80	14						81	
				81	14						82	
				82	14						83	
				83	14						84	
				84	14						85	
				85	14						86	
				86	14						87	
				87	14						88	
				88	14						89	
				89	14						90	
				90	14						91	
				91	14						92	
				92	14						93	
				93	14						94	
				94	14						95	
				95	14						96	
				96	14						97	
				97	14						98	
				98	14						99	
				99	14						100	
				100	14						101	
				101	14						102	
				102	14						103	
				103	14						104	
				104	14						105	
				105	14						106	
				106	14						107	
				107	14						108	
				108	14						109	
				109	14						110	
				110	14						111	
				111	14						112	
				112	14						113	
				113	14						114	
				114	14						115	
				115	14						116	
				116	14						117	
				117	14						118	
				118	14						119	
				119	14						120	
				120	14						121	
				121	14						122	
				122	14						123	
				123	14						124	
				124	14						125	
				125	14						126	
				126	14						127	
				127	14						128	
				128	14						129	
				129	14						130	
				130	14						131	
				131	14						132	
				132	14						133	
				133	14						134	
				134	14						135	
				135	14						136	
				136	14						137	
				137	14						138	
				138	14						139	
				139	14						140	
				140	14						141	
				141	14						142	
				142	14						143	
				143	14						144	
				144	14						145	
				145	14						146	
				146	14						147	
				147	14						148	
				148	14						149	
				149	14						150	
				150	14						151	
				151	14						152	
				152	14						153	
				153	14						154	
				154	14						155	
				155	14						156	
				156	14						157	
				157	14						158	
				158	14						159	
				159	14						160	
				160	14						161	
				161	14						162	
				162	14						163	
				163	14						164	
				164	14						165	
				165	14						166	
				166	14						167	
				167	14							