



**Portland Campus**  
University of Southern Maine

Architect

**Koetter | Kim  
& Associates Inc.**

356 Boylston Street  
Boston, MA 02116  
T: (617) 536 - 8560  
F: (617) 536 - 1217

Consultants

Civil Engineer:  
**Woodard & Curran**  
41 Hutchins Drive  
Portland, ME 04102  
T: (207) 774 - 2112  
F: (207) 774 - 6635

Lighting:  
**Sladen Feinstein Int. Lighting Inc.**  
73 Hemenway Street  
Boston, MA 02115  
T: (617) 267 - 9500  
F: (617) 267 - 2045

Landscape Architect:  
**Carol R. Johnson Associates**  
115 Broad Street  
Boston, MA 02110  
T: (617) 896 - 2590  
F: (617) 896 - 2340

Specification:  
**Collective Wisdom Corporation**  
75 Bay State Road  
Weston, MA 02453  
T: (781) 647-7322  
F: (781) 647-5297

Structural Engineer:  
**Weidinger**  
201 Broadway 4th Floor  
Cambridge, MA 02139  
T: (617) 374 - 0000  
F: (617) 374 - 0010

Traffic:  
**Gorrell-Palmer Inc.**  
15 Shaker Road  
Gray, ME 04039  
T: (207) 657-6910  
F: (207) 657-6912

MEP:  
**Harriman Associates**  
One Auburn Business Park  
Auburn, ME 04210  
T: (207) 784 - 5100  
F: (207) 782 - 3017

Geotech:  
**Haley & Aldrich, Inc.**  
75 Washington Avenue, Suite 203  
Portland, ME 04101  
T: (207) 482-4609  
F: (207) 482-4659

Issue

100% CONSTRUCTION DOCUMENTS  
November 17, 2006

Revisions

△	Addendum #1	12/11/06
△	CCD No. 5- Permit Revisions	06/20/07

Project

**University Commons**  
University of Southern Maine

Drawing Title

**PENTHOUSE FLOOR PLAN /  
ROOF PLANS**

0 FT 9 16

Scale: 1/8"=1'-0" @ Full Size

KKA Project Number  
0510.000

Drawn By

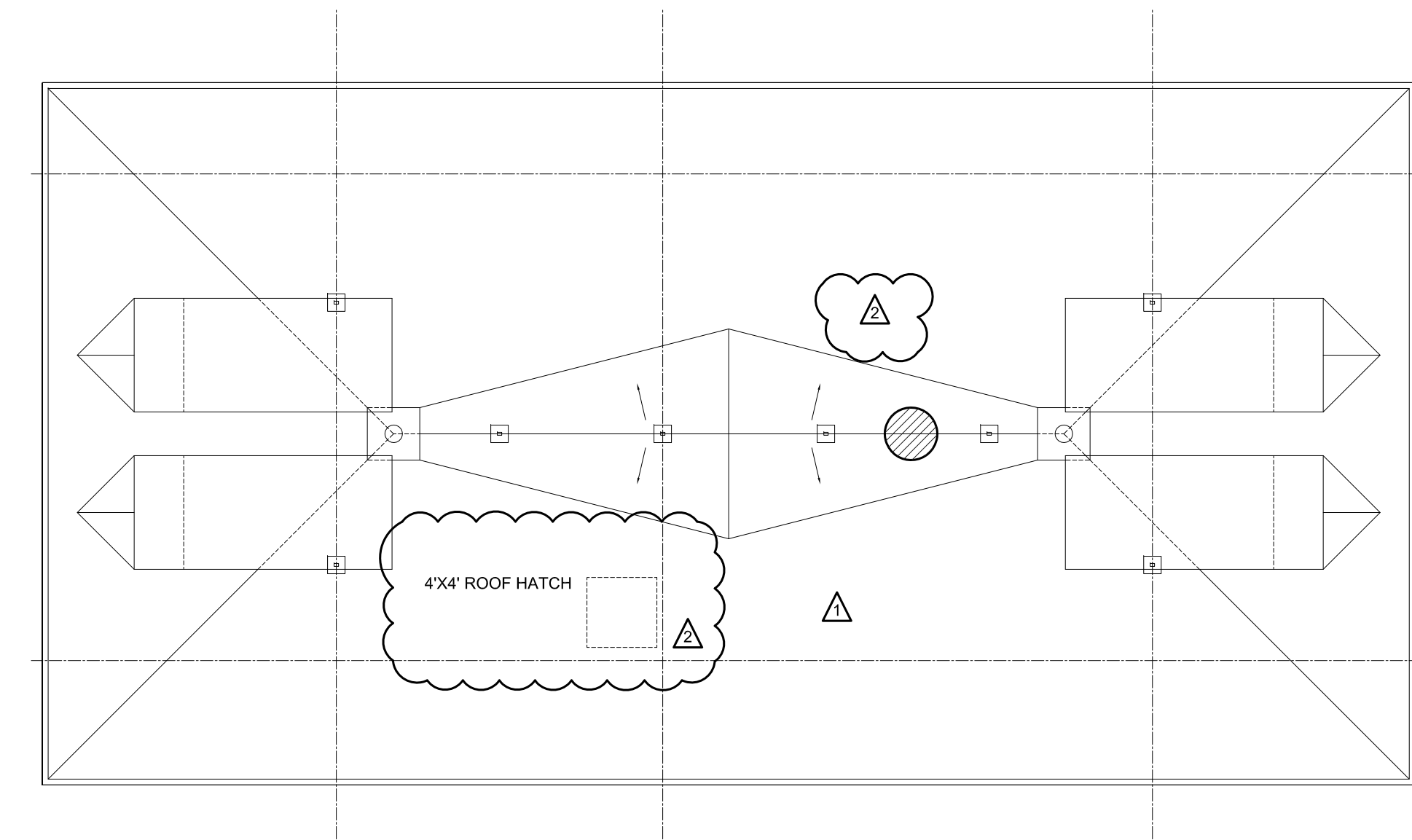
Checked By

Date  
November 17, 2006

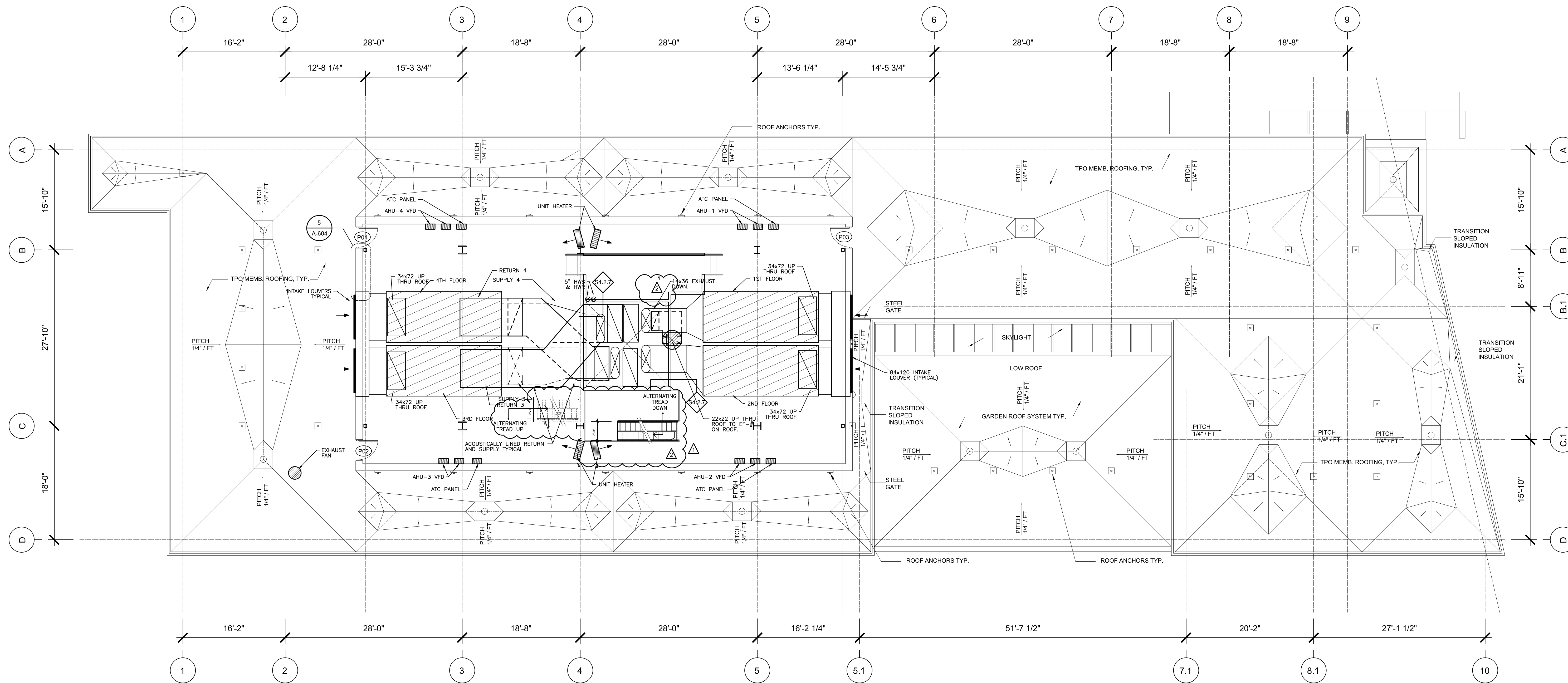
Issue

Drawing Number

**A-106**



**2 PENTHOUSE ROOF PLAN**  
SCALE: 1/8"=1'-0"



**1 PENTHOUSE FLOOR PLAN / ROOF PLAN**  
SCALE: 1/8"=1'-0"