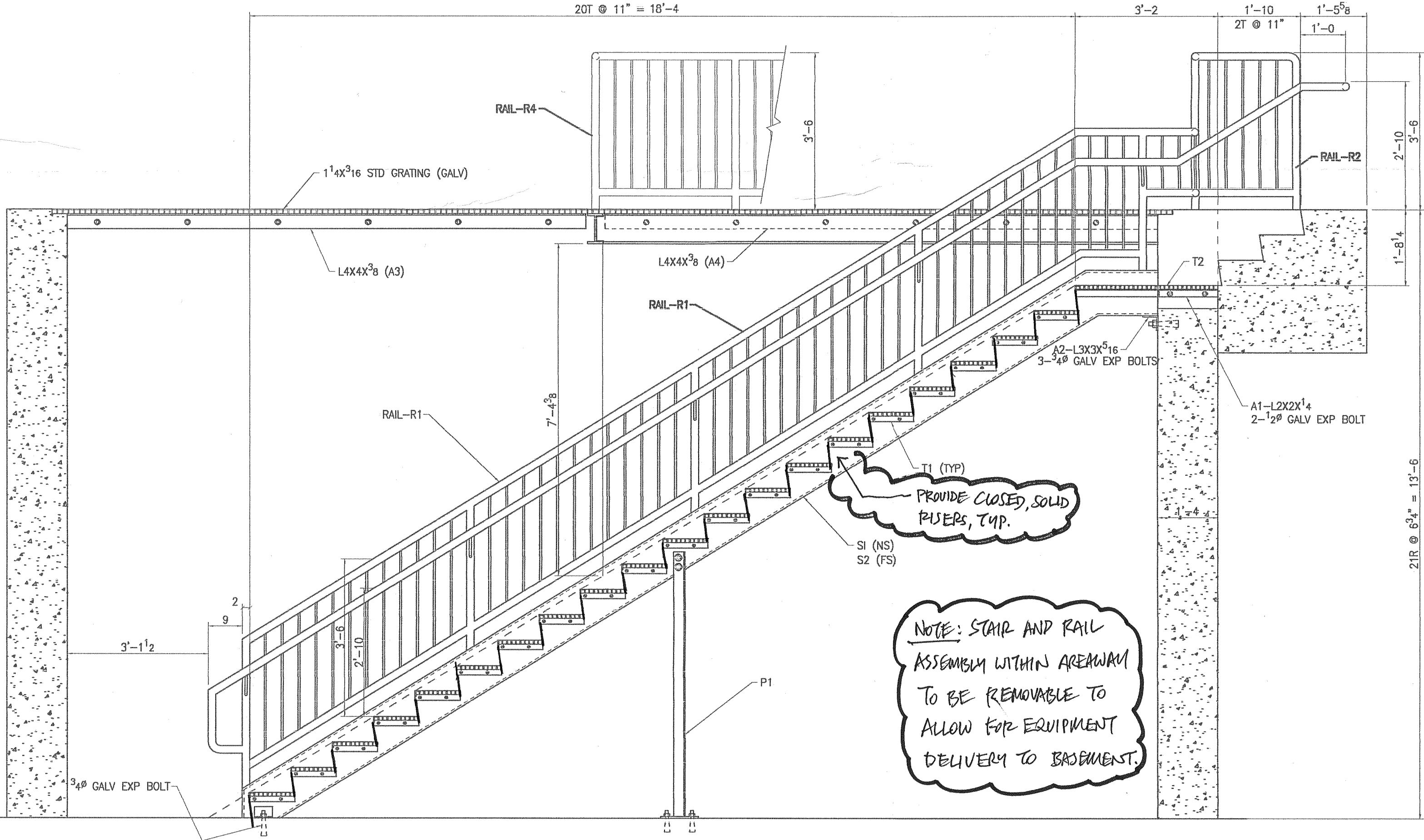
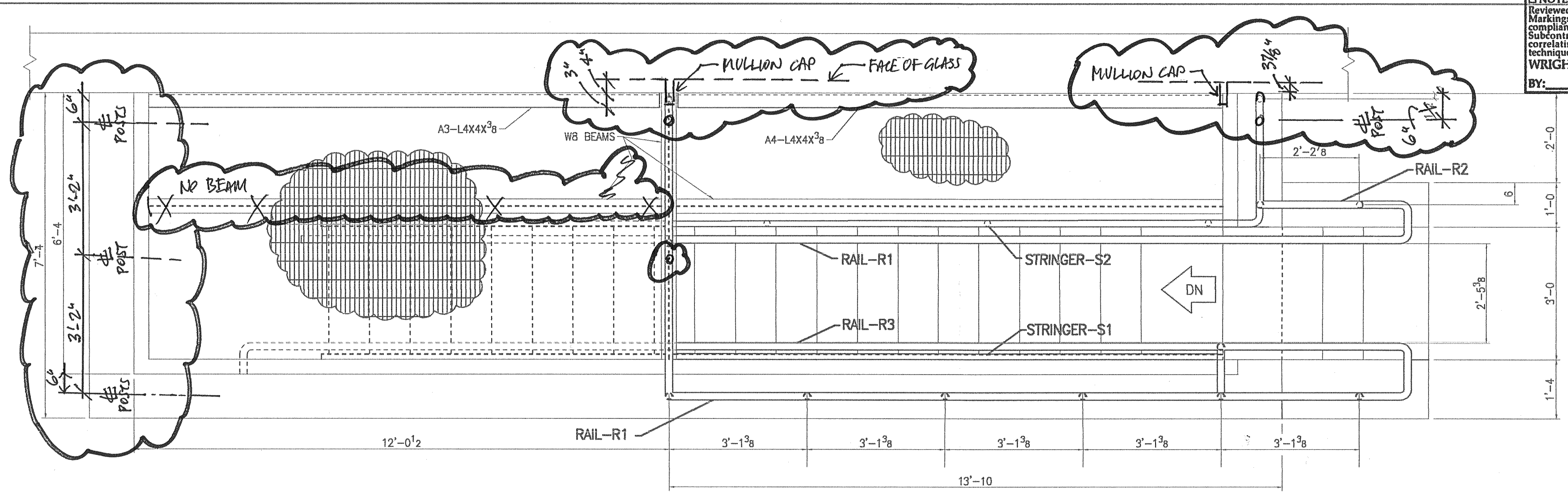


SUBMITTAL REVIEW:
 Submittal Package: 05-506 Submittal No: 0551021218
 REVIEWED-NO EXCEPTIONS TAKEN REVISE AND RESUBMIT
 NOTE MARKINGS REJECTED
 Reviewed for general conformance with the design concept and contract documents. Markings or comments shall not be construed as relieving the Subcontractor from compliance with the project plans and specifications, nor departure therefrom. The Subcontractor remains responsible for details and accuracy, for conforming and correlating all quantities and dimensions, for selecting fabrication processes, for techniques of assembly, and for performing the work in a safe manner.
WRIGHT-RYAN CONSTRUCTION, INC.
 BY: *B. J. JON* DATE: 10/26/07



PLAN AND SECTION
 @ EXTERIOR STAIR

Approved
 Approved, subject to condition as noted
 Resubmission required
 Submit additional item as noted
 Revise submission as noted and resubmit
 Disapproved

Review is only for conformance with the design concept of the Work. Architect is relying on the accuracy of information contained in the submittal. See Contract Documents for Contractor's responsibility regarding dimensions, quantities, coordination and performance of the Work.

Date: JAN. 22, 2008 By: *Walter J. Redball*

Koetter, Kim & Associates, Inc.
 344 Boylston Street Boston, MA 02116 (617) 536-8560

PRINT RECORD			MATERIAL: AS NOTED
USE	QUAN	DATE	
OFA	5	11-28-07	HOLES: 5/16" DIA. UON
			ELECTRODES: E70XX
			FIELD CONN:
SHOP			SURFACE PREP: SSPC-SP3
			PAINT: 1-S/C RED OXIDE PRIMER
FIELD			REF. DWGS:

CUSTOMER: WRIGHT-RYAN CONSTRUCTION
 JOB: UNIVERSITY COMMONS, U.S.M.
 DESCRIPTION: EXTERIOR GALV. STAIR DETAILS
 ARCHITECT: KOETTER/KIM & ASSOCIATES INC.
 ENGINEER: WEIDLINGER

DRAWN BY JRC 7-9-07 CHKD BY _____ DRAWING NUMBER SE1 REVISION NUMBER _____

LMC LIGHT IRON, INC.
 E RANGE ROAD - P.O. BOX 521
 LIMERICK, MAINE 04048 TEL: (207) 793-9957 FAX: (207) 793-3919

JOB NUMBER
2700