



Portland Campus
University of Southern Maine

Architect

**Koetter | Kim
& Associates Inc.**

356 Boylston Street
Boston, MA 02116
T: (617) 536 - 8560
F: (617) 536 - 1217

Consultants

Civil Engineer:
Woodard & Curran
41 Hutchins Drive
Portland, ME 04102
T: (207) 774 - 2112
F: (207) 774 - 6635

Lighting:
Sladen Feinstein Int. Lighting Inc.
73 Hemenway Street
Boston, MA 02115
T: (617) 267 - 9500
F: (617) 267 - 2045

Landscape Architect:
Carol R. Johnson Associates
115 Broad Street
Boston, MA 02110
T: (617) 896 - 2590
F: (617) 896 - 2340

Specification:
Collective Wisdom Corporation
75 Bay State Road
Weston, MA 02453
T: (781) 647-7322
F: (781) 647-5297

Structural Engineer:
Weidinger
201 Broadway 4th Floor
Cambridge, MA 02139
T: (617) 374 - 0000
F: (617) 374 - 0010

Traffic:
Gorrell-Palmer Inc.
15 Shaker Road
Gray, ME 04039
T: (207) 657-6910
F: (207) 657-6912

MEP:
Harriman Associates
One Auburn Business Park
Auburn, ME 04210
T: (207) 784 - 5100
F: (207) 782 - 3017

Geotech:
Haley & Aldrich, Inc.
75 Washington Avenue, Suite 203
Portland, ME 04101
T: (207) 482-4609
F: (207) 482-4659

Issue

100% CONSTRUCTION DOCUMENTS
November 17, 2006

Revisions

△	Addendum #1	12/11/06
△	CCD No. 5- Permit Revisions	06/20/07

Project

University Commons
University of Southern Maine

Drawing Title

**PENTHOUSE FLOOR PLAN /
ROOF PLANS**

0 FT 9 16

Scale: 1/8"=1'-0" @ Full Size

KKA Project Number
0510.000

Drawn By

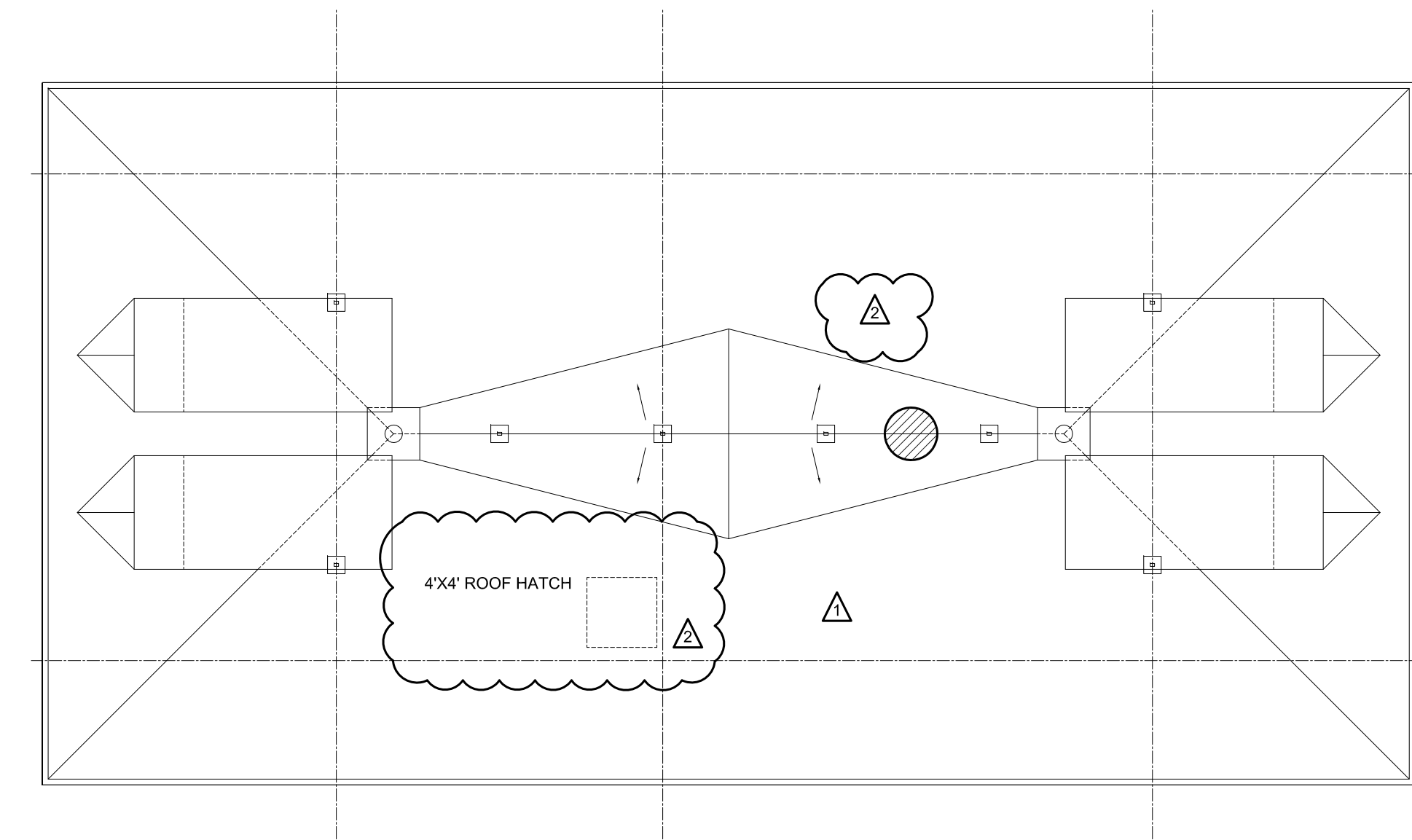
Checked By

Date
November 17, 2006

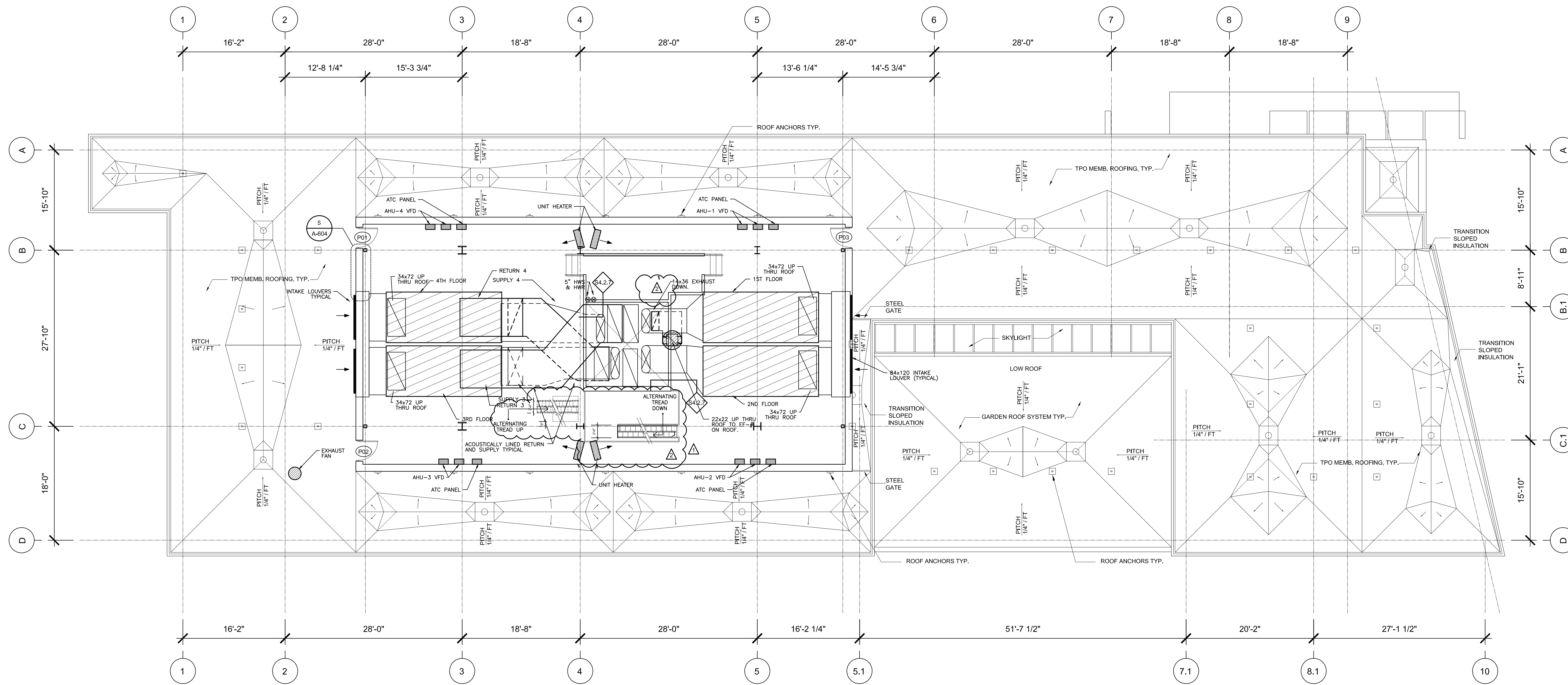
Issue

Drawing Number

A-106



2 PENTHOUSE ROOF PLAN
SCALE: 1/8"=1'-0"



1 PENTHOUSE FLOOR PLAN / ROOF PLAN
SCALE: 1/8"=1'-0"

NOTE: MINIMUM TAPERED
ROOF INSULATION
THICKNESS TO BE 2 1/2"

