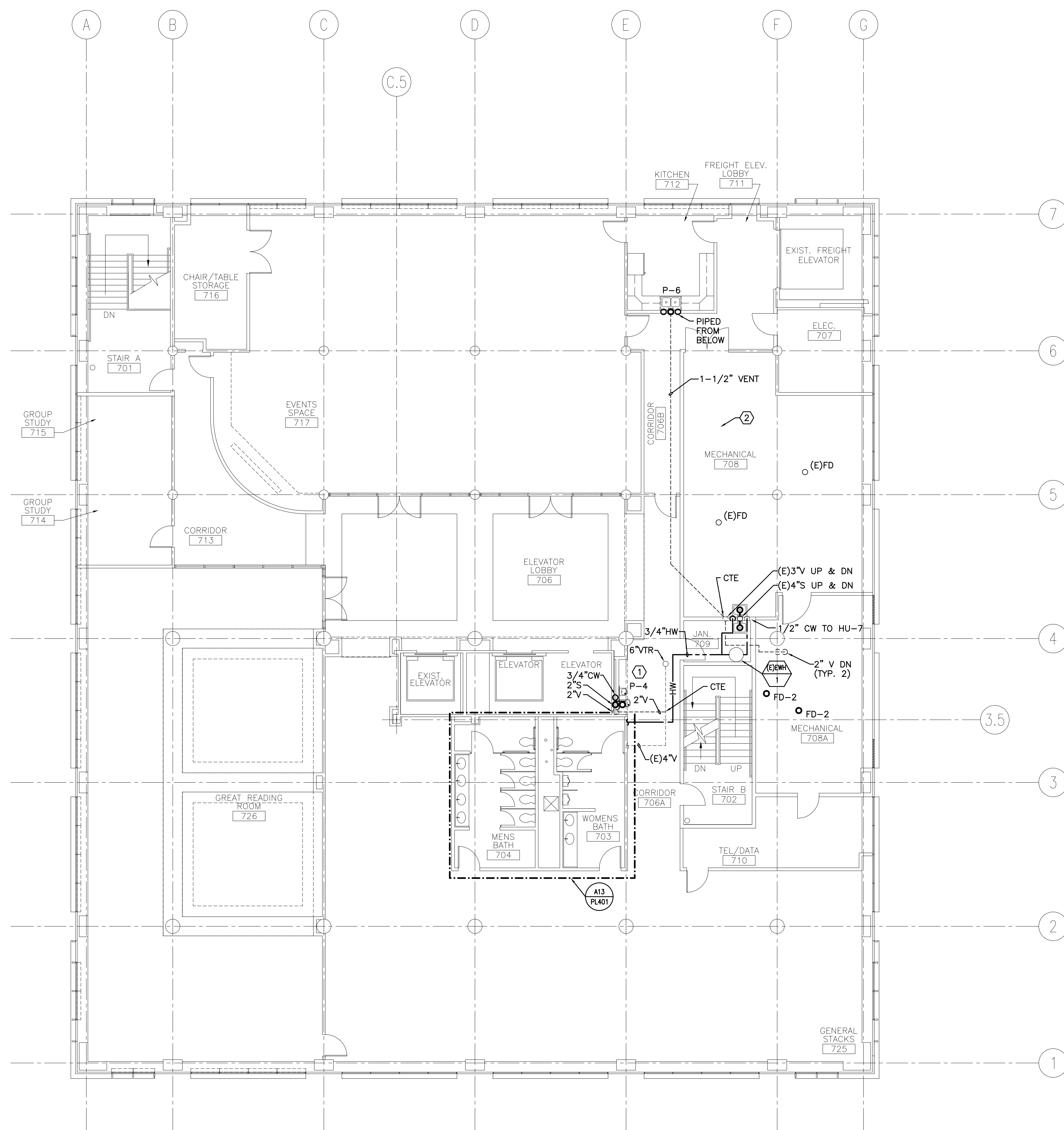


NOTE:
1. SEE M-001 FOR LEGEND AND ABBREVIATIONS.

KEYED NOTES:
 ① CHILLER FOR P-4 TO BE LOCATED IN JAN. 709. RUN CW PIPES TO & FROM THIS LOCATION FOR P-4.
 ② ADDENDUM #4: CONNECT TO EXISTING NG AND DROP NEW NG TO B-4 GAS TRAIN INVERT. CONNECT TO EXISTING GAS TRAIN VENTS AND RUN UP THROUGH ROOF INDEPENDENTLY. TERMINATE EACH WITH A GOOSENECK AND INSECT SCREEN. GAS VENTS TO BE 1-INCH, MIN.



0	ISSUED FOR CONSTRUCTION	3-17-03
REV.	DESCRIPTION	DATE

ISSUED FOR CONSTRUCTION
3-17-03
CURRENT ISSUE STATUS:



SMRT ARCHITECTURE ENGINEERING PLANNING
 SMRT
 144 Fore Street/P.O. Box 618
 Portland, Maine 04104
 tel. (207) 772-3846
 fax. (207) 772-1070

GLICKMAN LIBRARY
UNIVERSITY OF SOUTHERN MAINE
 PORTLAND, MAINE

SEVENTH FLOOR
PLUMBING PLAN

SHEET TITLE:	SCALE: 1/8"=1'-0"	DATE: 3-17-03
PROJECT MANAGER: SLB	JOB CAP/DRAWN: CTB/LAC	GRAPHIC SCALE: 0" 1"
A/E OF RECORD: DBR	SMRT CAD FILE: PL107-99092	SHEET No.
PROJECT No. 99092		PL107