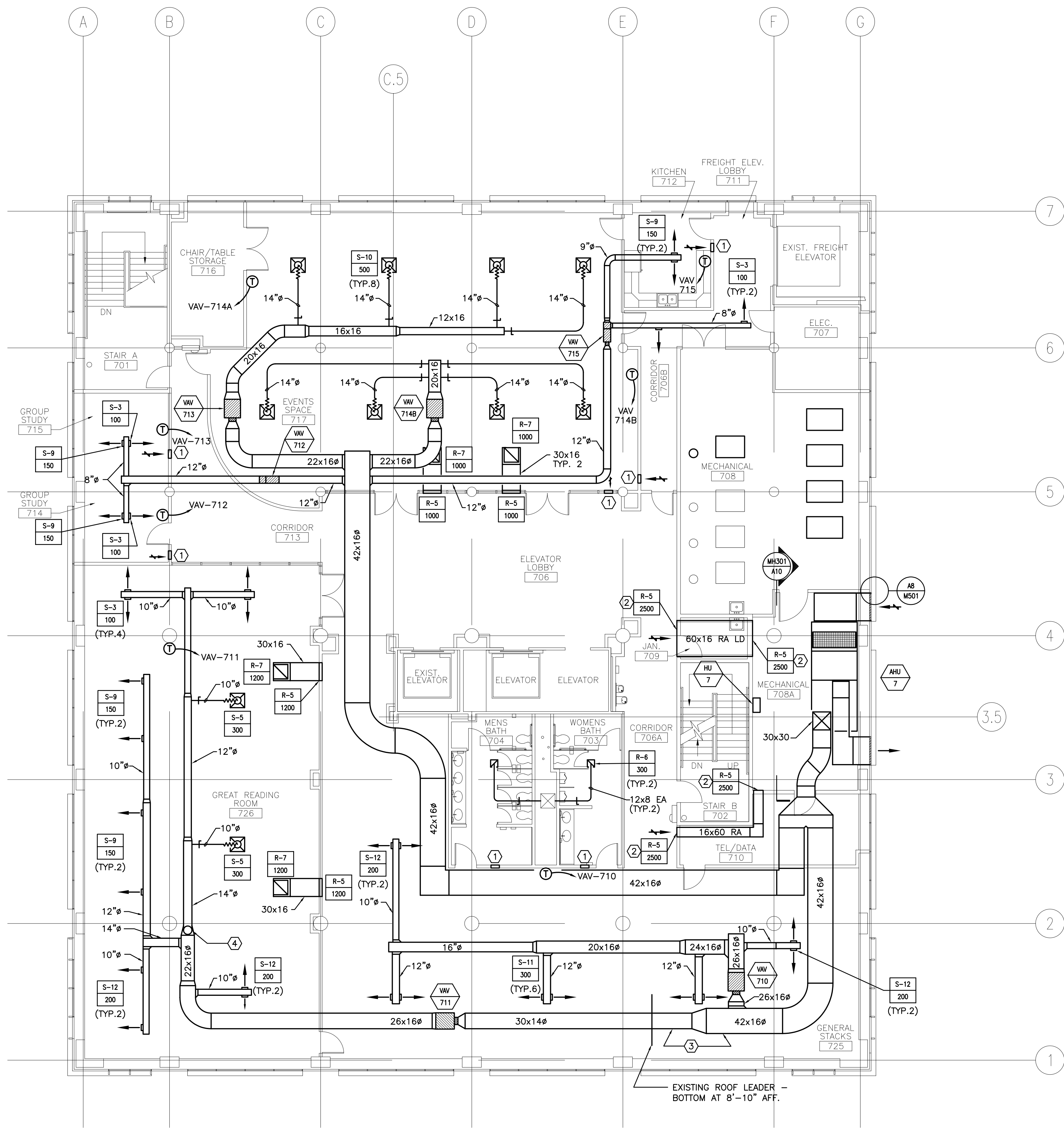


**NOTE:**  
 1. SEE M-001 FOR LEGEND AND ABBREVIATIONS.

- KEYED NOTES:**
- ① SEE DETAIL A5 ON SHEET M-501.
  - ② TWO GRILLS AT EACH OPENING.
  - ③ KEEP BOTTOM OF TWO DUCTS LEVEL TO PASS UNDER RL.
  - ④ DUCT TO RISE TO PASS ABOVE SUSPENDED CEILING.



0	ISSUED FOR CONSTRUCTION	3-17-03
REV.	DESCRIPTION	DATE

**ISSUED FOR CONSTRUCTION**  
**3-17-03**



ARCHITECTURE ENGINEERING PLANNING  
 SMRT  
 144 Fore Street, P.O. Box 618  
 Portland, Maine 04104  
 tel. (207) 772-3846  
 fax. (207) 772-1070

**GLICKMAN LIBRARY**  
 UNIVERSITY OF SOUTHERN MAINE  
 PORTLAND, MAINE

PROJECT:  
**SEVENTH FLOOR DUCTWORK PLAN**

SHEET TITLE:	SCALE: 1/8"=1'-0"	DATE: 3-17-03
PROJECT MANAGER: SLB	JOB CAP/DRAWN: CTB/LAC	GRAPHIC SCALE: 0" 1"
A/E OF RECORD: DBR	SMRT CAD FILE: MH107-99092	SHEET No.
PROJECT No. 99092		<b>MH107</b>