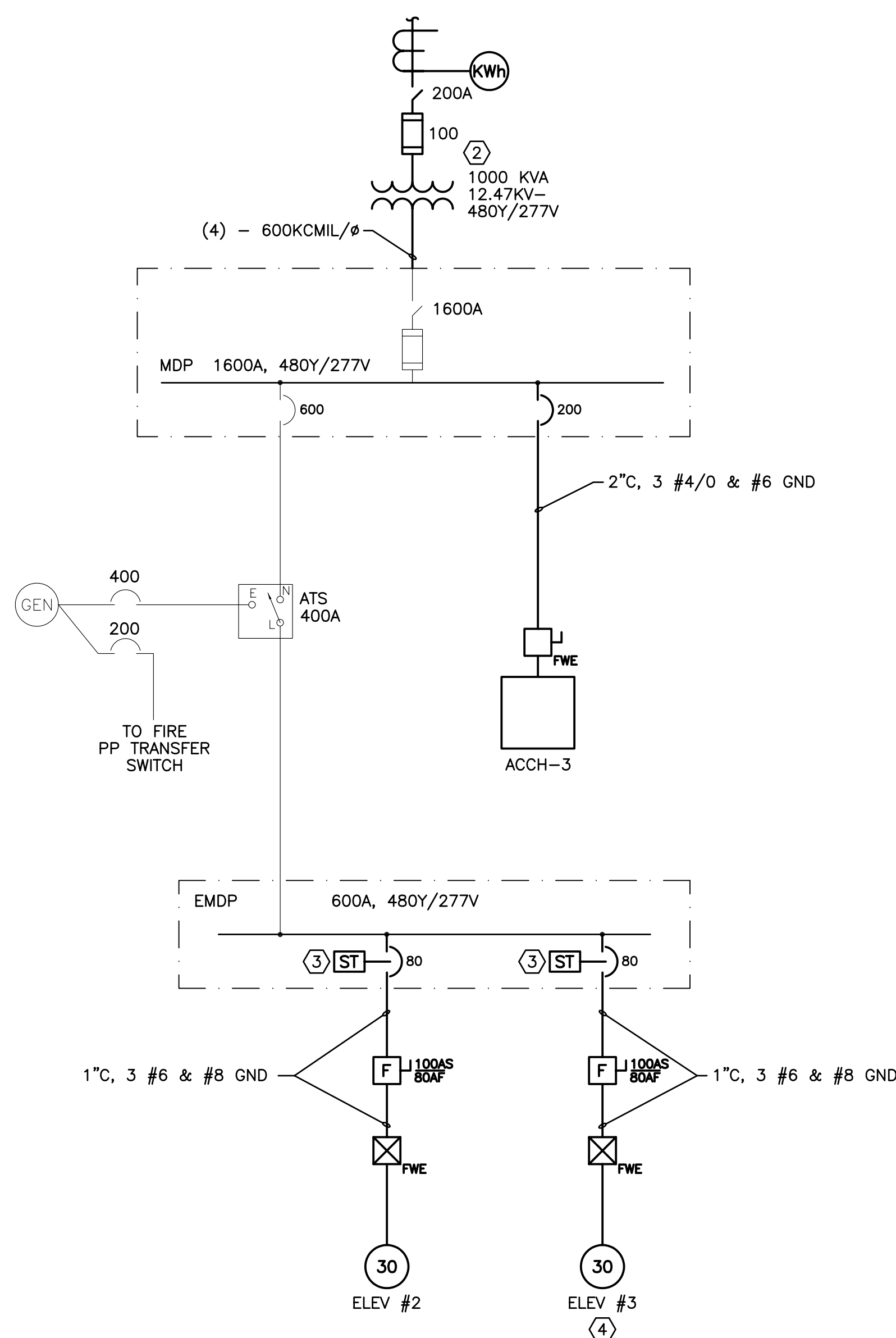


NOTE:

1. SEE SHEET E-001 FOR LEGEND AND GENERAL NOTES.

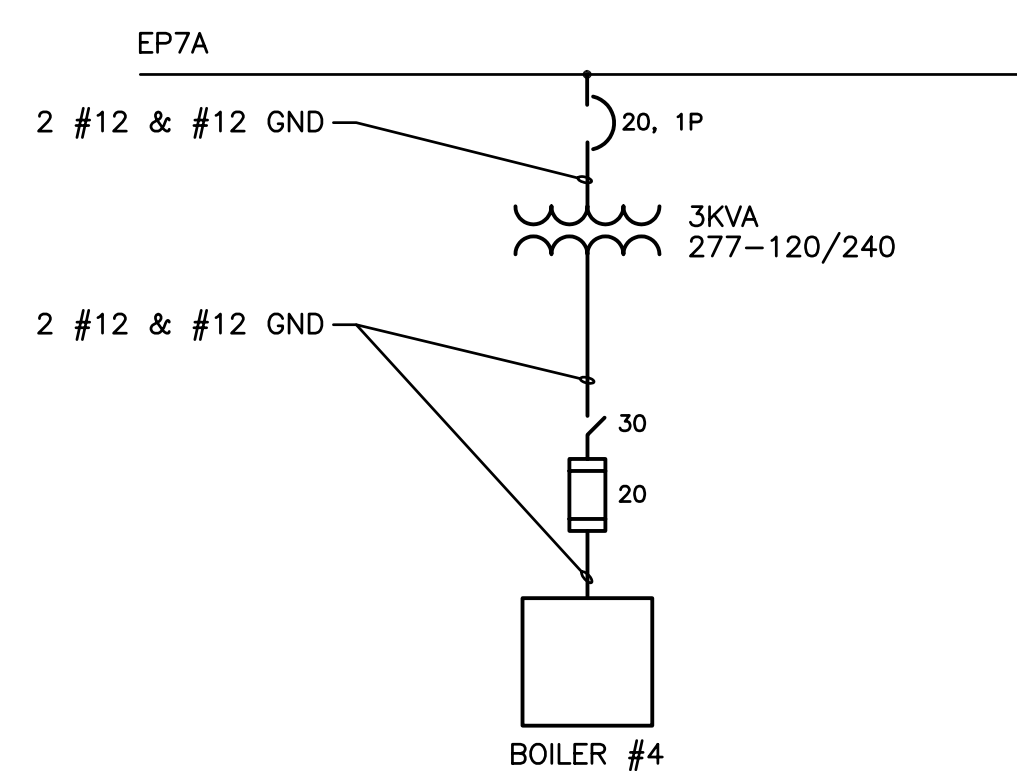
KEYED NOTES:

- ① EXISTING FEEDER TO (3) 3KVA TRANSFORMERS FOR THE BOILERS WILL BE DISCONNECTED FROM EP7 AND RE-FED FROM EP7A.
- ② EXISTING 500KVA TRANSFORMER TO BE CHANGED OUT AND REPLACED WITH A 1000KVA TRANSFORMER. RECONNECT EXISTING SECONDARY CONDUCTORS.
- ③ USE EXISTING SHUNT TRIP CIRCUIT FOR ELEVATOR #1 (EPB-17) FOR SHUNT TRIP CIRCUIT ON ELEVATORS 2 & 3.
- ④ ALL WORK ASSOCIATED WITH ELEVATOR #3 SHALL BE PRICED AS ALTERNATE #6.



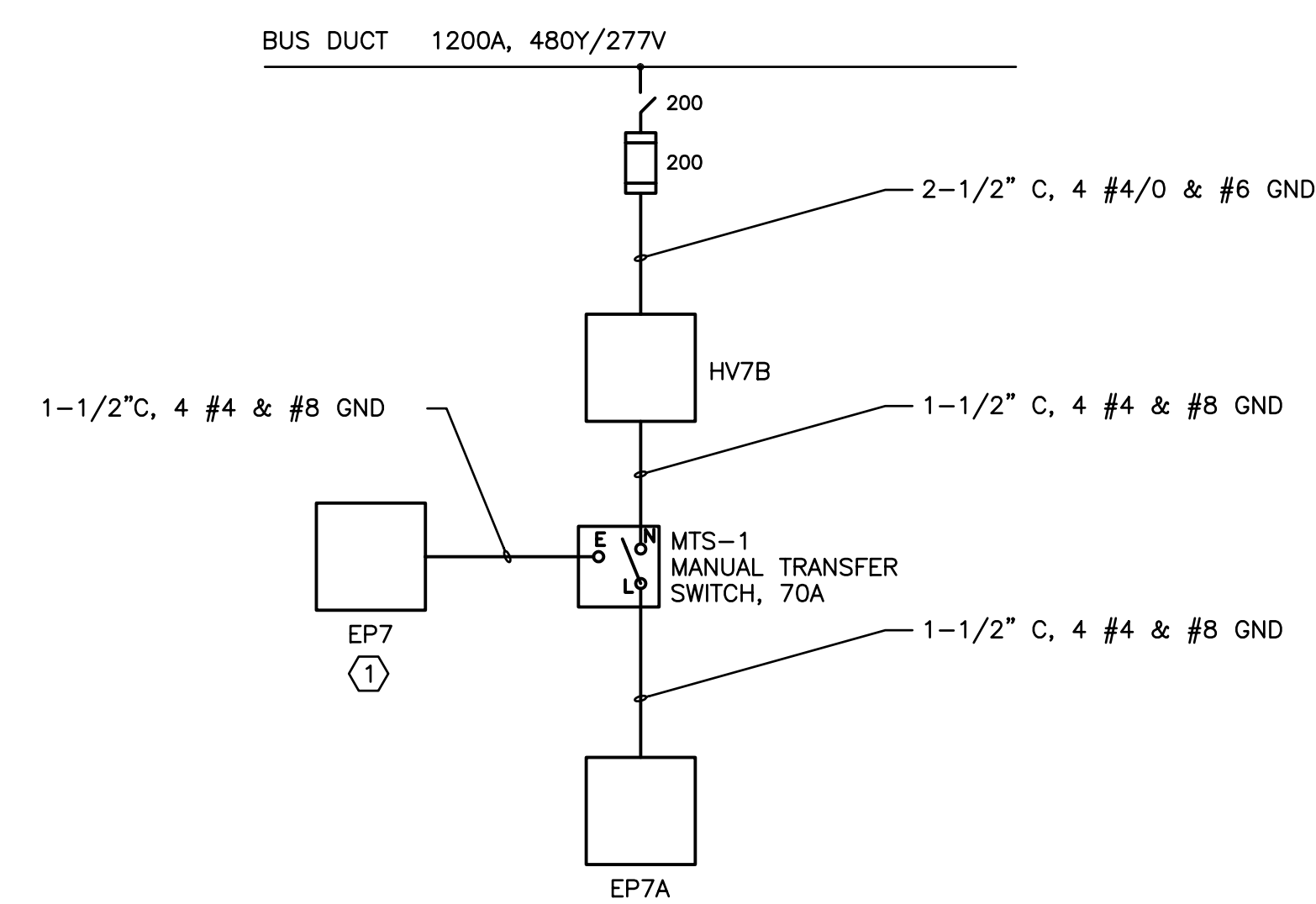
A1 ONE LINE DIAGRAM

NOT TO SCALE



A7 BOILER #4 (ALTERNATE #4)

NOT TO SCALE



A12 7TH FLOOR ELEC. CLOSET

NOT TO SCALE

0	ISSUED FOR CONSTRUCTION	3-17-03
REV.	DESCRIPTION	DATE

ISSUED FOR CONSTRUCTION
3-17-03

CURRENT ISSUE STATUS:

--	--	--

SMRT ARCHITECTURE ENGINEERING PLANNING
SMRT
144 Fore Street/P.O. Box 618
Portland, Maine 04104
tel. (207) 772-3846
fax. (207) 772-1070

GLICKMAN LIBRARY
UNIVERSITY OF SOUTHERN MAINE
PORTLAND, MAINE

ONE LINE DIAGRAMS

SHEET TITLE:		DATE:
SCALE:	NOT TO SCALE	GRAPHIC SCALE: 0" = 1"
PROJECT MANAGER:	SLB	JPP
JOB CAP/DRAWN:	CTB/JAC	SMRT CAD FILE: EP651-99092
A/E OF RECORD:	JPP	PROJECT No. 99092
SHEET No.		EP651