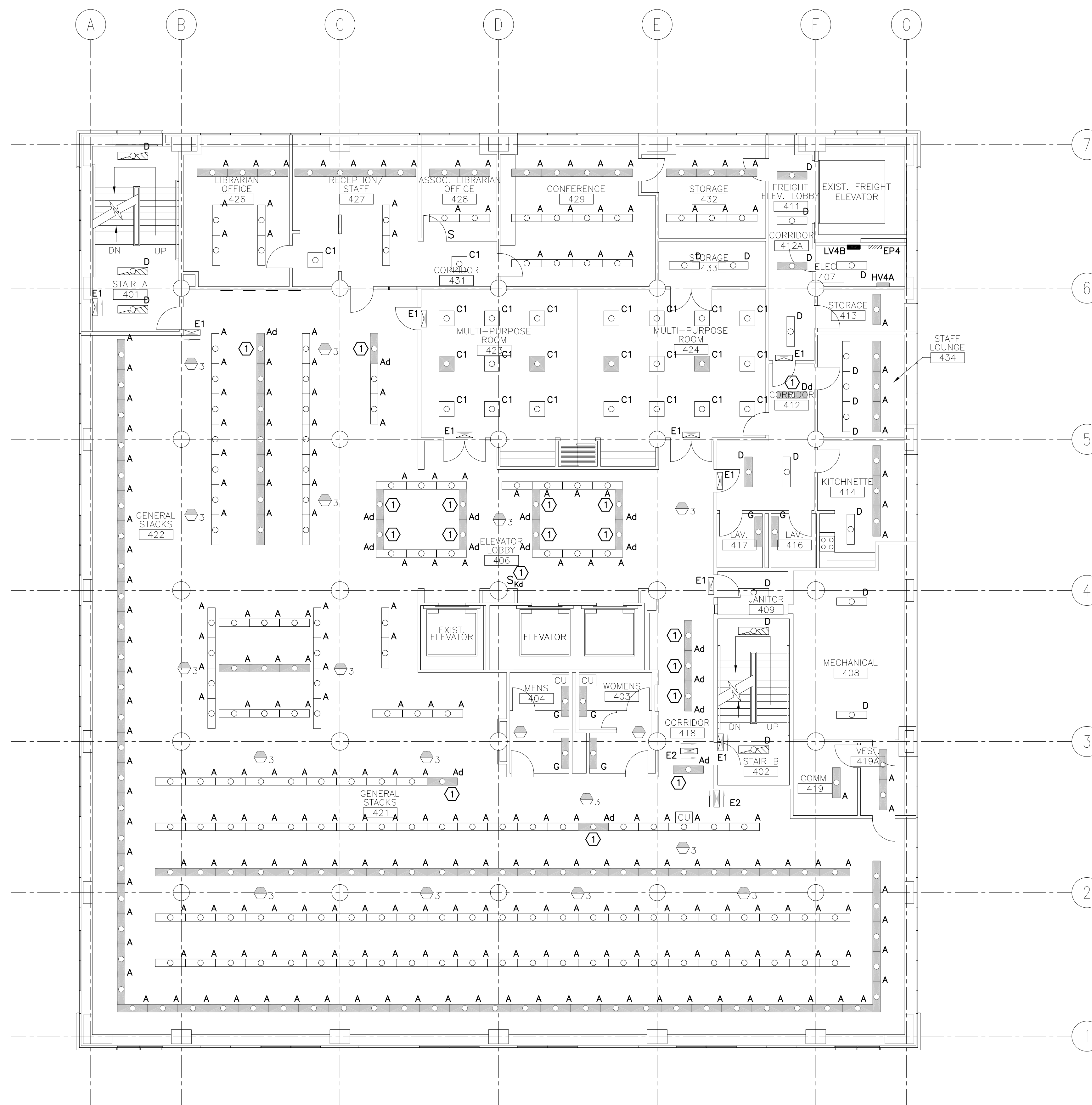


NOTES:

1. SEE SHEET E-001 FOR LEGEND AND GENERAL NOTES.
2. LIGHTS SHOWN ON DEMO PLANS CAN BE RE-USED WHERE NEW LIGHTS OF THE SAME TYPE ARE SHOWN.
3. PROVIDE KEY SWITCH SK4. IT WILL CONTROL SOME EMERGENCY LIGHTS THAT WERE PREVIOUSLY CONTROLLED BY MOTION SENSOR. ALL WORK ASSOCIATED WITH THE ADDITION OF THIS KEY SWITCH, INCLUDING ALL WIRING, SHALL BE PRICED AS ALTERNATE #3.

KEYED NOTE:

- ① EXISTING FIXTURE TO BE CONTROLLED FROM NEW KEYED SWITCH SK4 AND CIRCUIT EP4-5. DISCONNECT FROM EXISTING CIRCUIT AND MOTION CONTROL.



0	ISSUED FOR CONSTRUCTION	3-17-03
REV.	DESCRIPTION	DATE

ISSUED FOR CONSTRUCTION
3-17-03
 CURRENT ISSUE STATUS:



SMRT ARCHITECTURE ENGINEERING PLANNING
 SMRT
 144 Fore Street/P.O. Box 618
 Portland, Maine 04104
 tel. (207) 773-3846
 fax. (207) 772-1070

GLICKMAN LIBRARY
 UNIVERSITY OF SOUTHERN MAINE
 PORTLAND, MAINE

PROJECT:
FOURTH FLOOR LIGHTING PLAN

SHEET TITLE:	SCALE: 1/8"=1'-0"	DATE:
PROJECT MANAGER: SLB	JOB CAP/DRAWN: CTB/JAC	GRAPHIC SCALE: 0" 1"
A/E OF RECORD: JPP	SMRT CAD FILE: EL104-99092	SHEET No.
PROJECT No. 99092		EL104