

GENERAL NOTES:

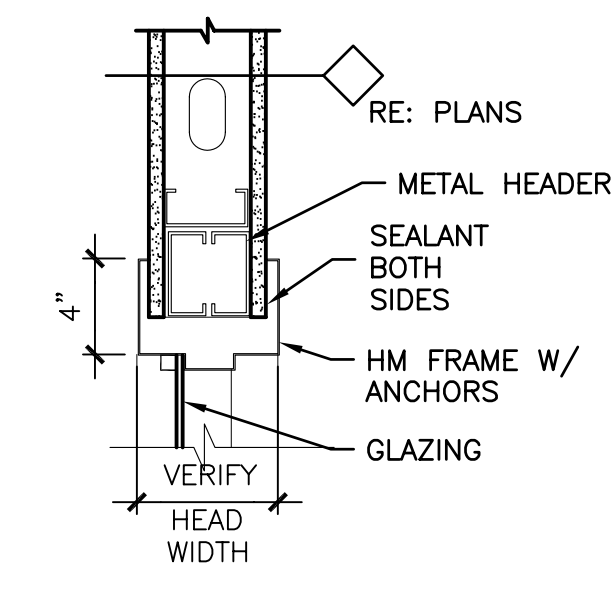
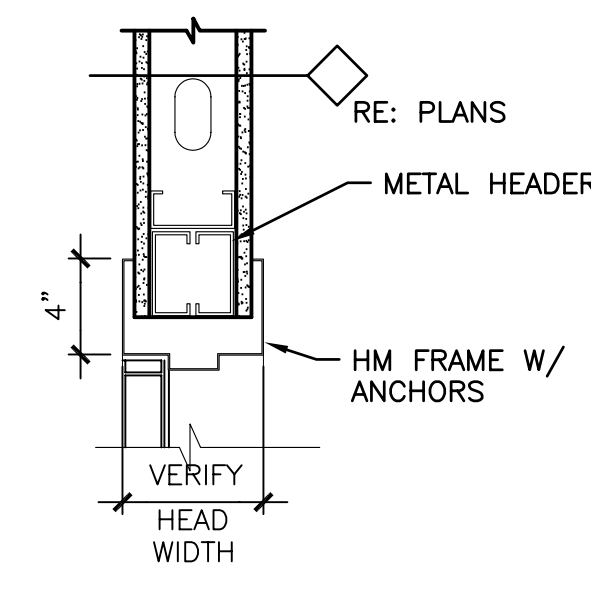
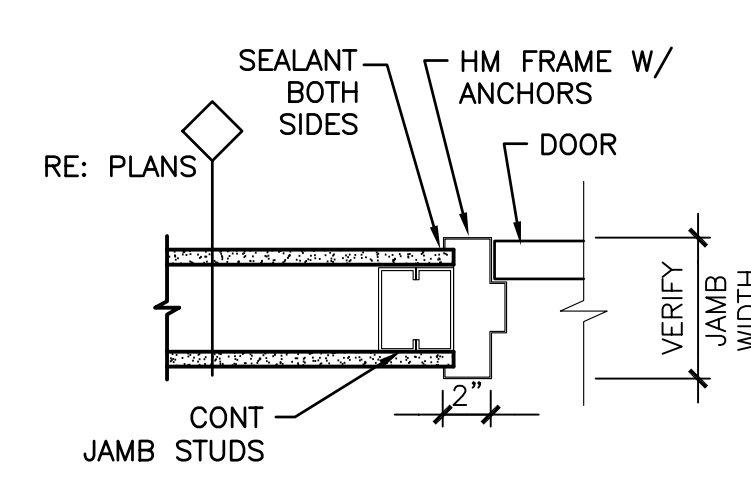
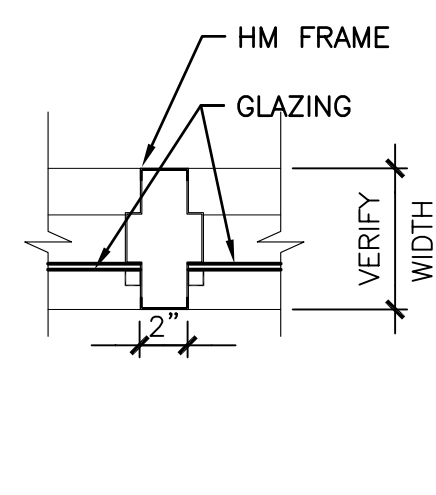
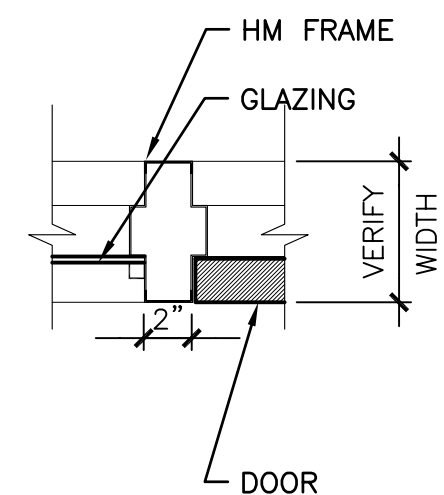
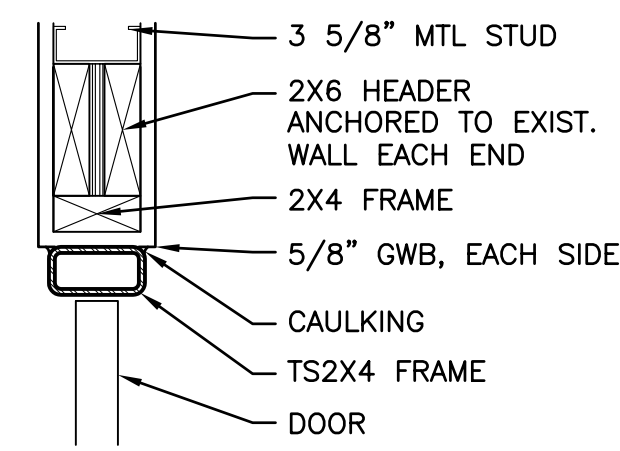
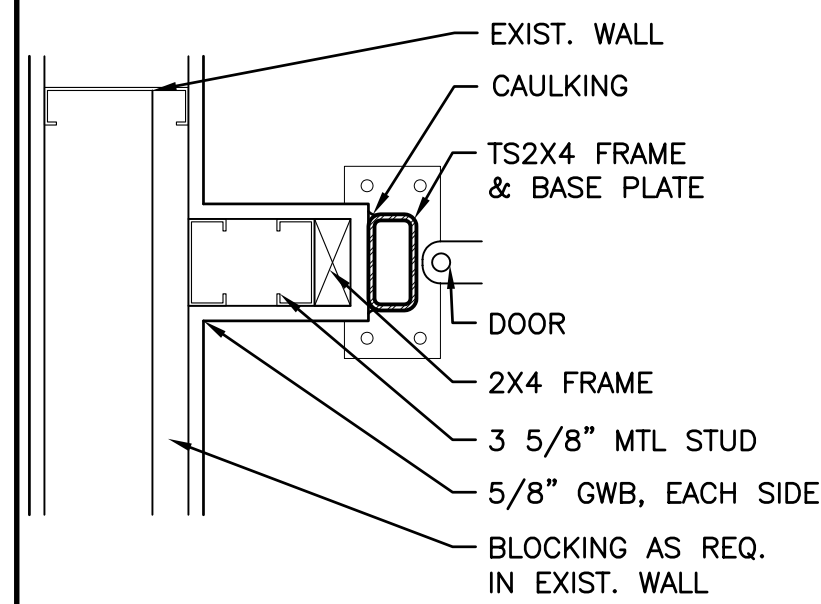
- RE: G1002 FOR GENERAL NOTES.
- RE: DOOR SCHEDULE NOTES FOR ADDITIONAL NOTES AND ABBREVIATIONS.

DOOR SCHEDULE NOTES:

- PROVIDE SMOKE SEALS AT ALL FIRE RATED DOORS. REFER TO HARDWARE SCHEDULE.
- 20 MIN. FIRE RATED DOORS SHALL BE CONSTRUCTED TO UL STANDARDS WITH ALL REQUIRED LABELS.
- RE: SPECIFICATIONS FOR HARDWARE SET DESCRIPTIONS.
- PROVIDE SMOKE SEALS & AUTOMATIC DOOR CLOSERS AT ALL FIRE RATED DOORS.
- RE: DOOR & WINDOW ELEVATIONS FOR GLAZING & FRAMES. PROVIDE SAME GLAZING IN DOOR AS ASSOCIATED SIDE LIGHTS.
- FLOOR FINISH TRANSITIONS OCCUR UNDER CENTER OF DOOR.
- ALL DOORS ARE TO BE 1 3/4" THICK UNLESS NOTED OTHERWISE.
- ALL DOORS ARE TO BE INSTALLED 6" FROM ADJACENT WALL OR CENTERED IN WALL AS SHOWN.

DOOR ABBREVIATIONS:

GL	GLAZING
HM/HMF	HOLLOW METAL FRAME
SC	SOLID CORE
STL	STEEL
WD	WOOD
WM	WIRE MESH
AL/ALUM	ALUMINUM
TEMP	TEMPERED GLASS
TIG	TEMPERED INSULATED GLASS
GHMI	GALVANIZED HOLLOW METAL INSULATED
WG	WIRE GLASS
CFG	CLEAR FIRE RATED GLASS
NG	NARROW GLAZING
FG	FULL GLAZING
FG2	TWO PANELS FULL GLAZING
HG	HALF GLAZING
F	FLUSH



M2 JAMB DETAIL
1 1/2" = 1'-0"

AE603

M4 HEAD DETAIL
1 1/2" = 1'-0"

AE603

M7 JAMB DETAIL
1 1/2" = 1'-0"

AE603

M9 MULLION DETAIL
1 1/2" = 1'-0"

AE603

M11 JAMB DETAIL
1 1/2" = 1'-0"

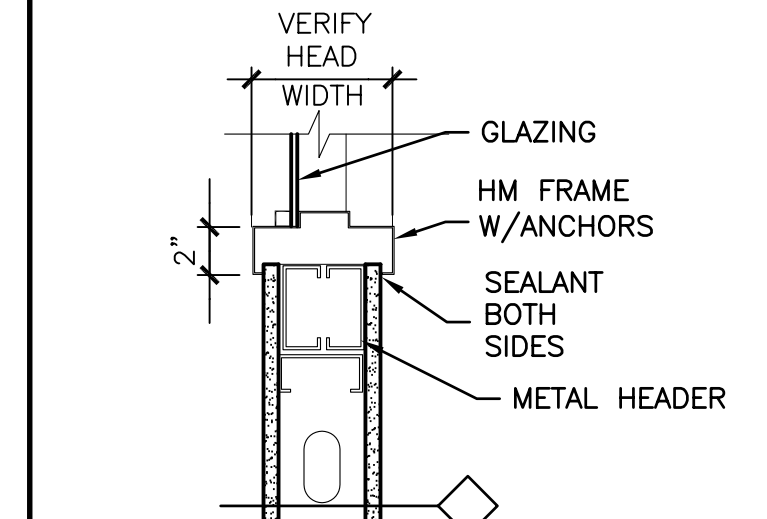
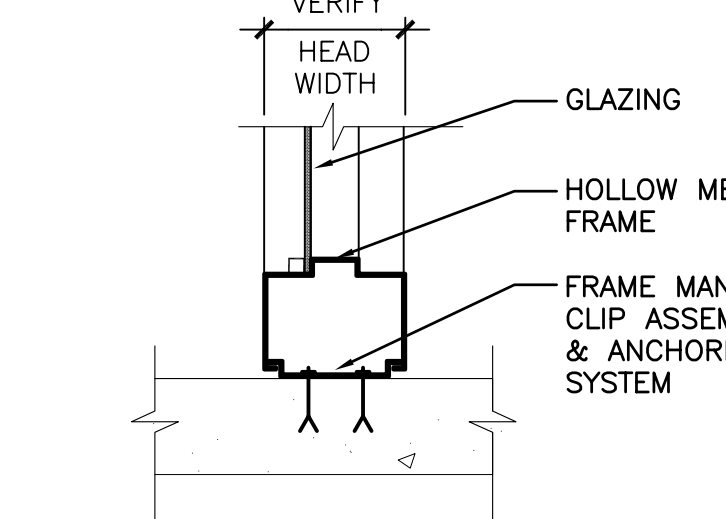
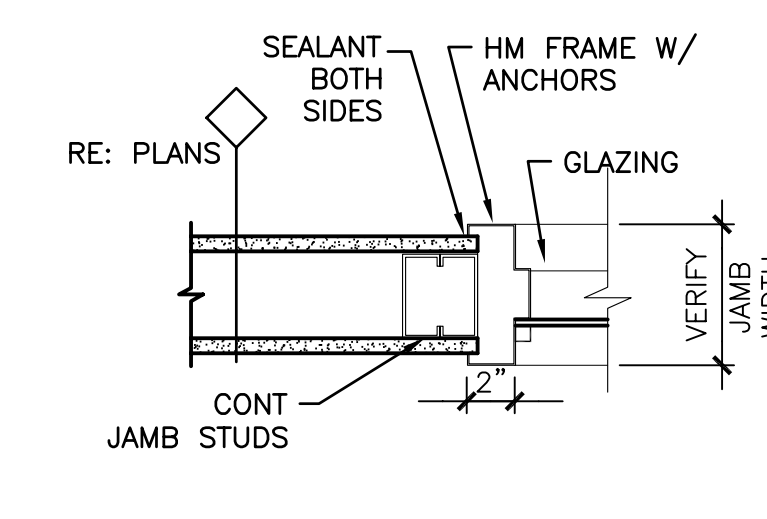
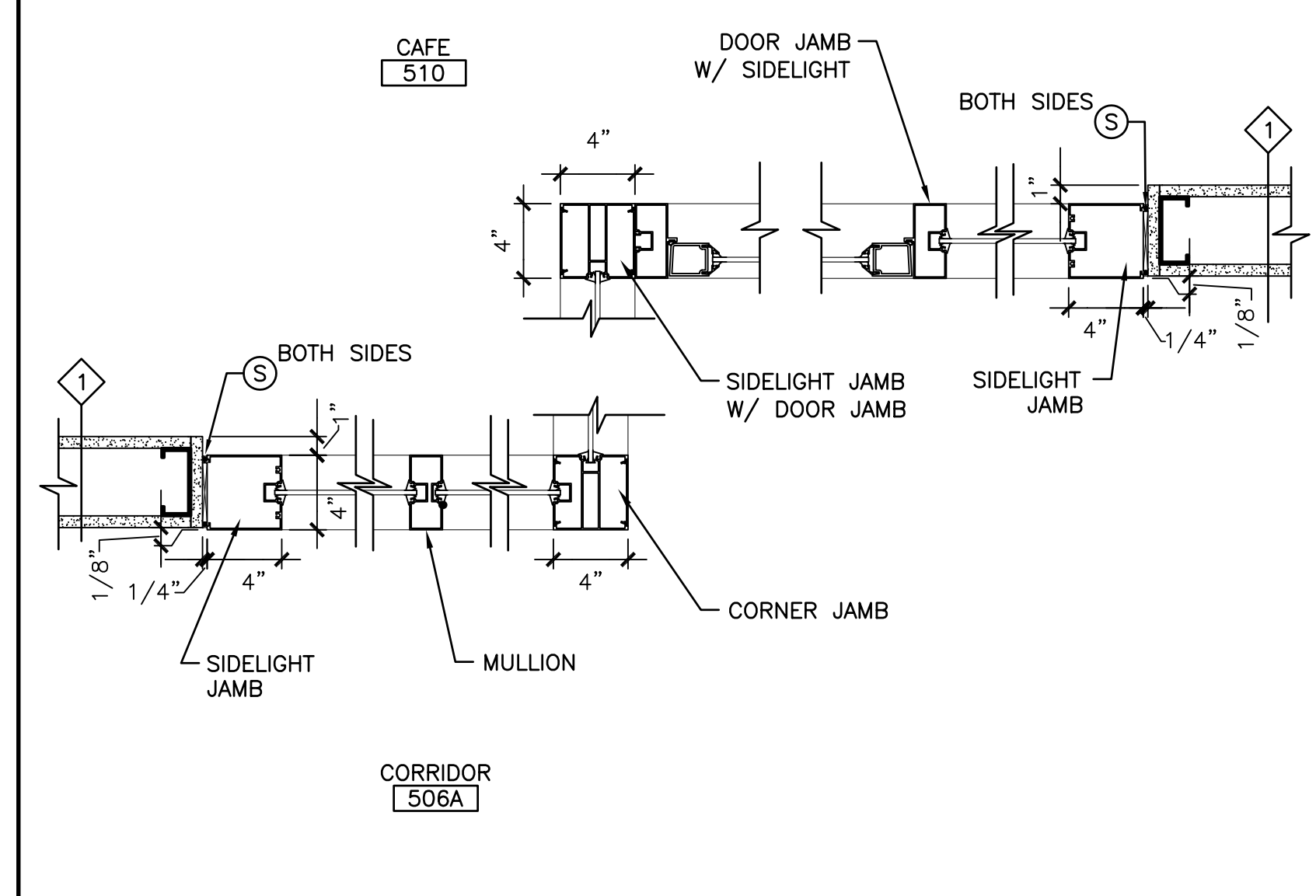
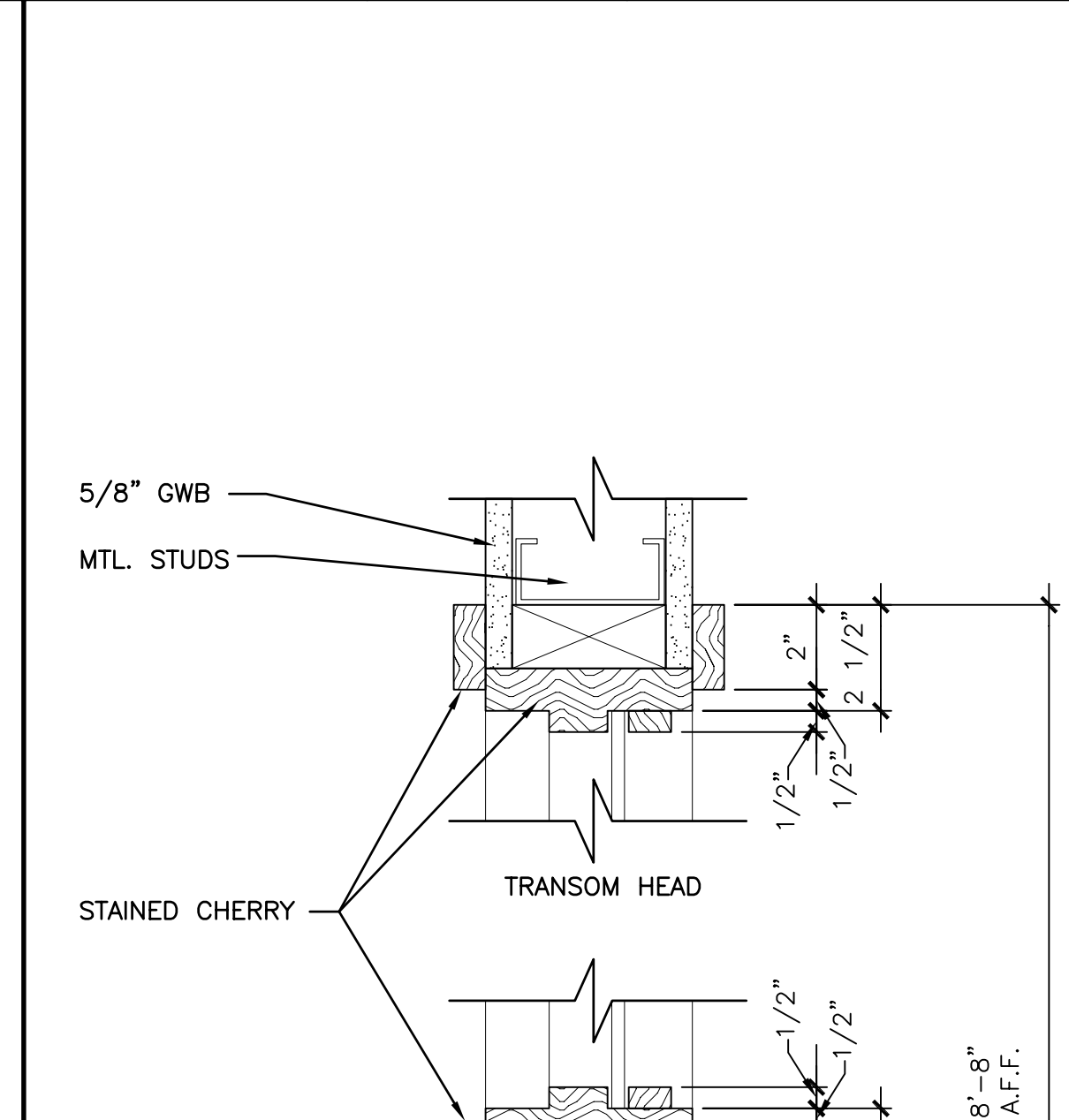
AE603

M13 HEAD DETAIL
1 1/2" = 1'-0"

AE603

M16 HEAD DETAIL
1 1/2" = 1'-0"

AE603



G7 ALUM. STOREFRONT SECTION
1 1/2" = 1'-0"

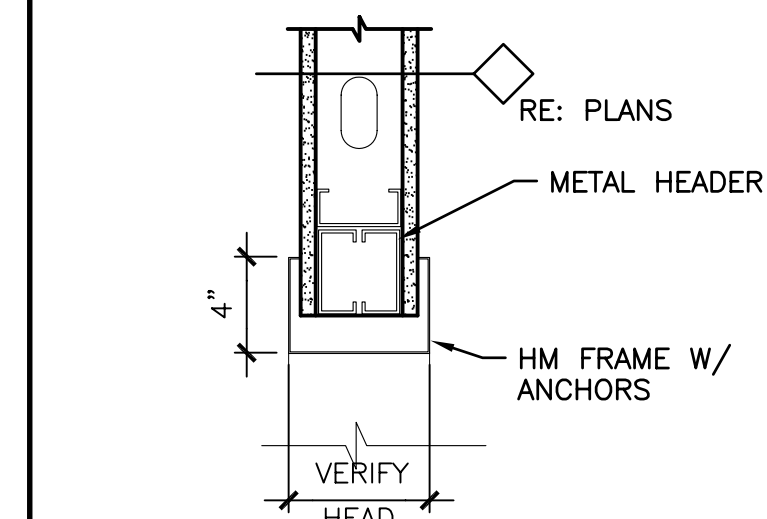
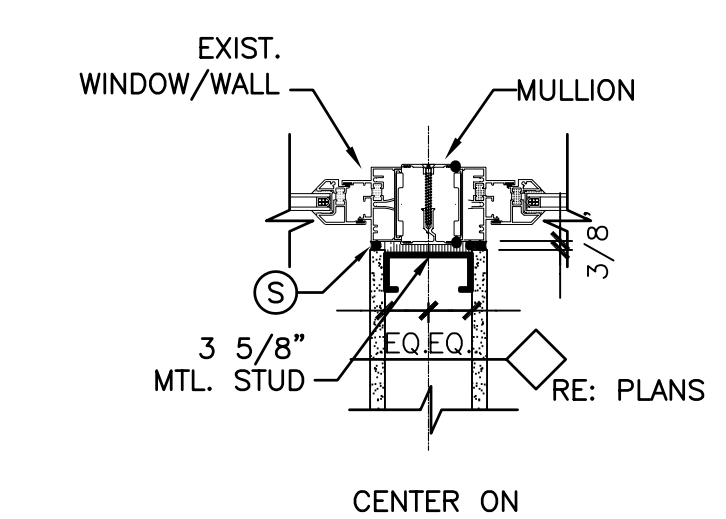
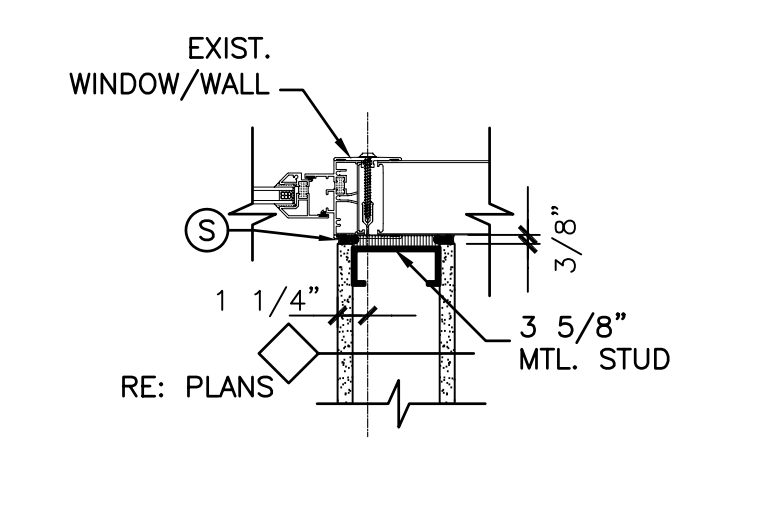
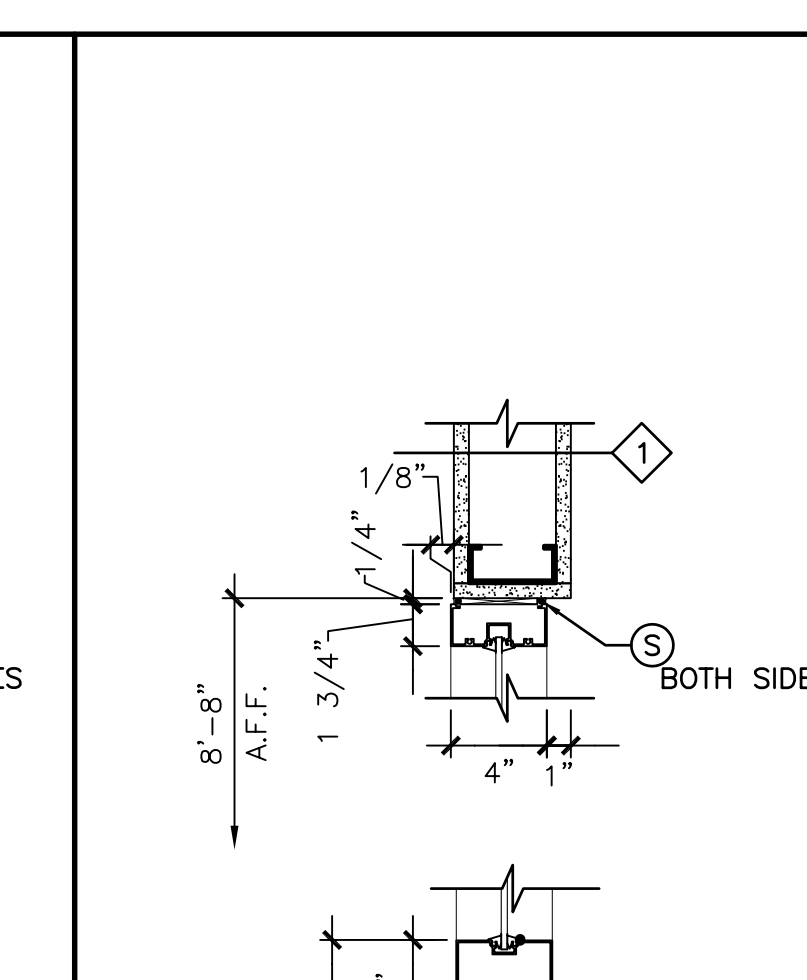
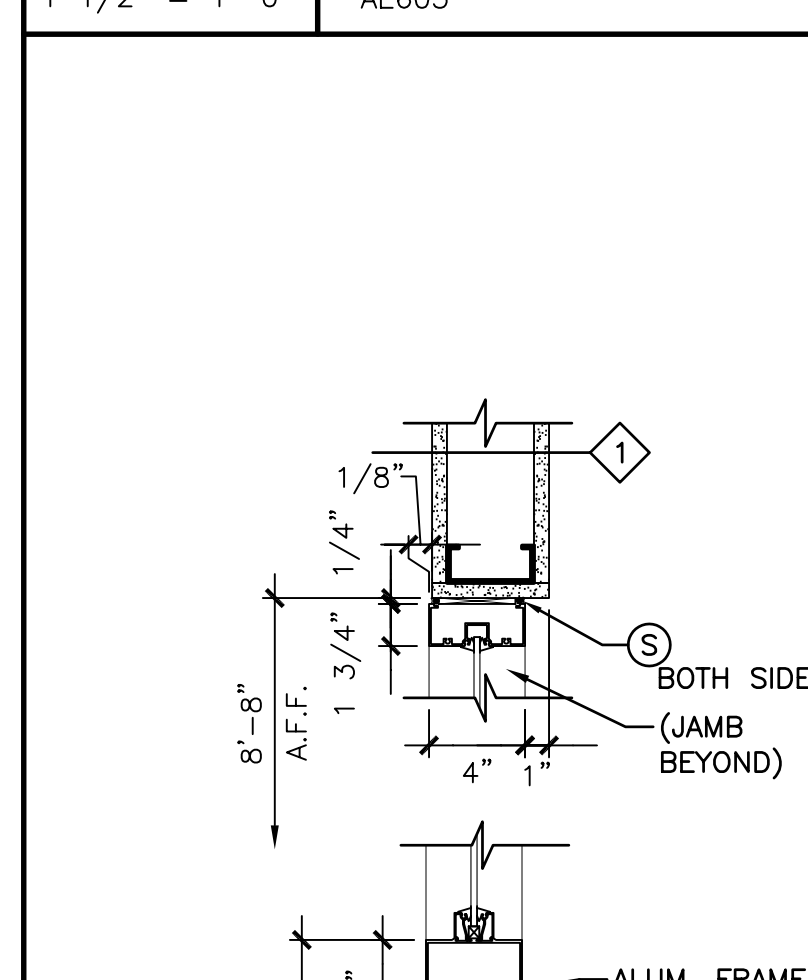
AE603

G11 JAMB DETAIL
1 1/2" = 1'-0"

AE603

G16 SILL DETAIL
1 1/2" = 1'-0"

AE603



D11 DETAIL
1 1/2" = 1'-0"

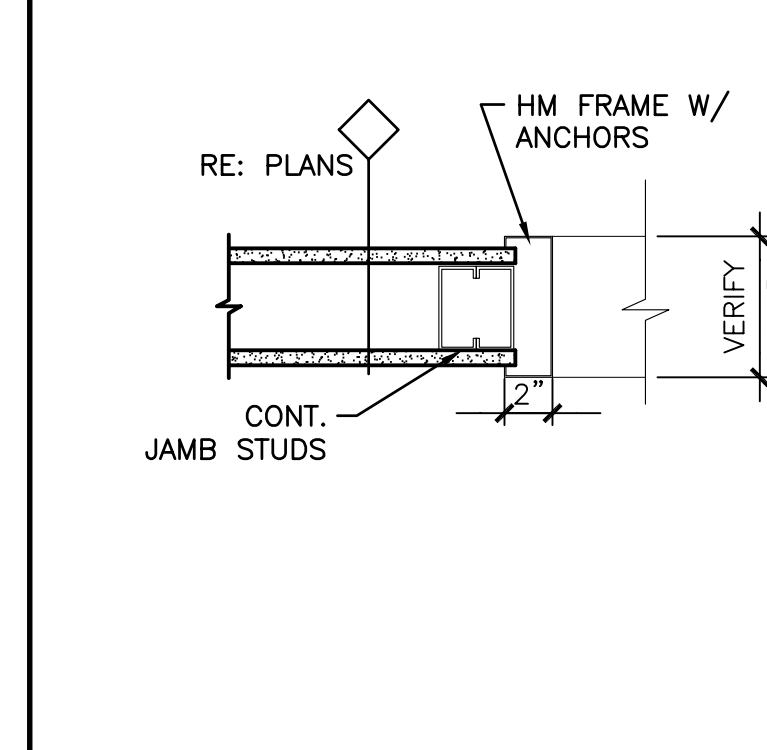
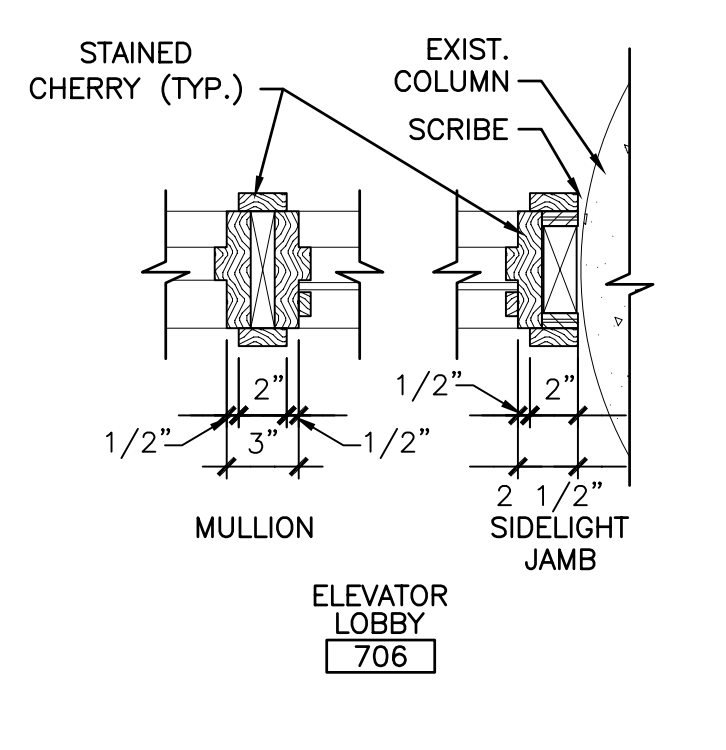
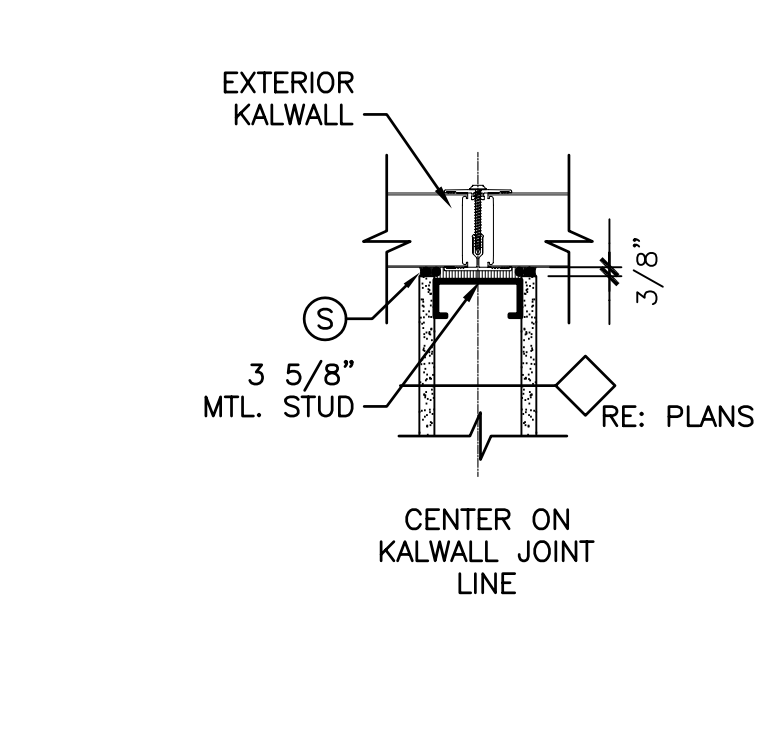
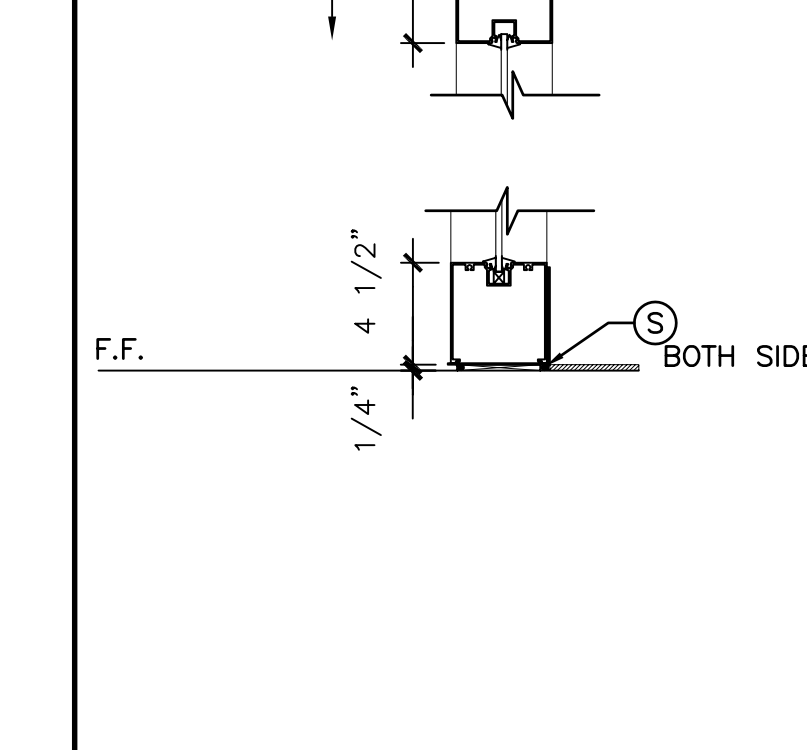
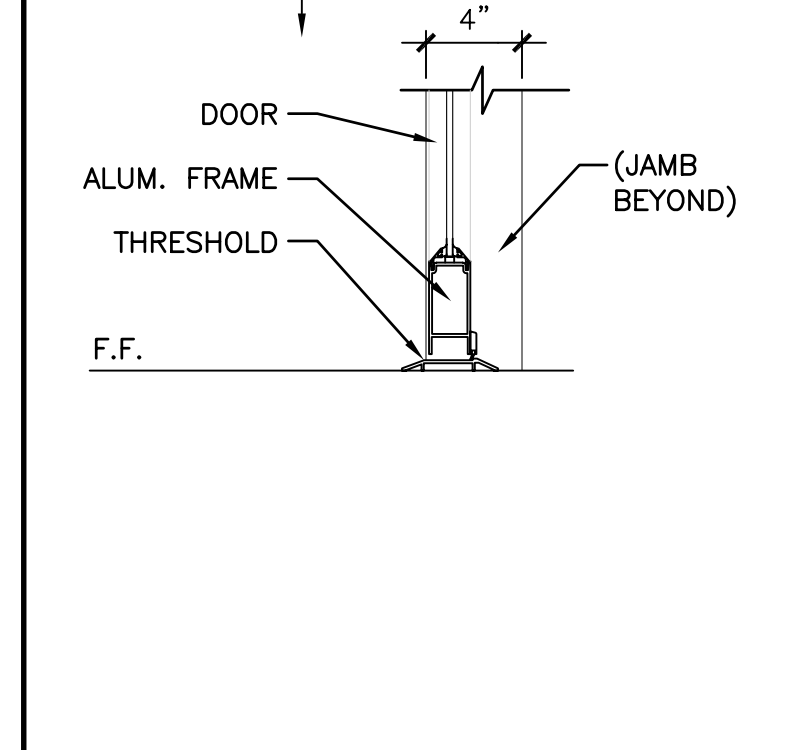
AE101, AE105, AE106, AE107

D13 DETAIL
1 1/2" = 1'-0"

AE101, AE105, AE106, AE107

D16 HEAD DETAIL
1 1/2" = 1'-0"

AE101, AE105, AE106, AE107



A7 STOREFRONT
1 1/2" = 1'-0"

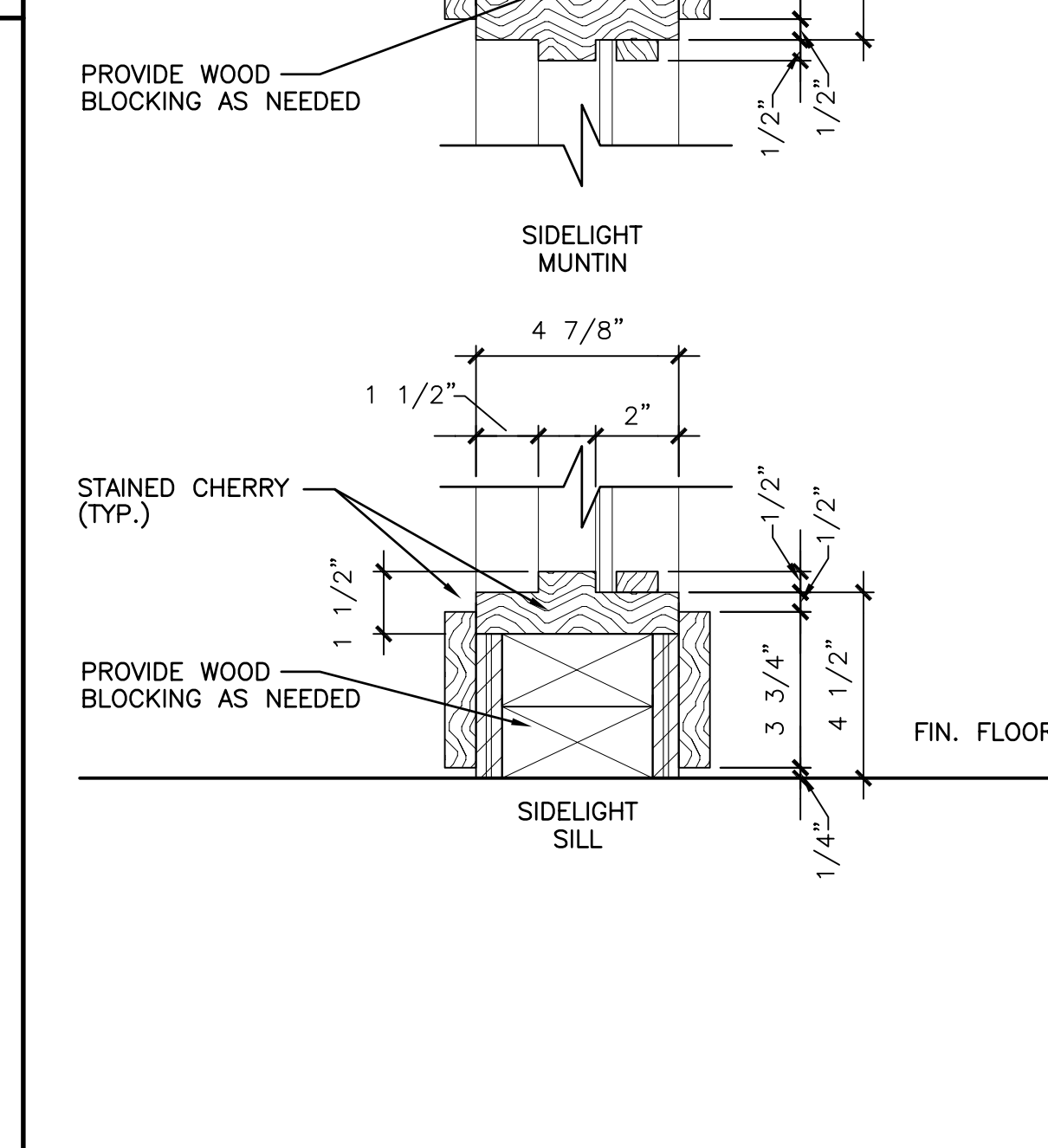
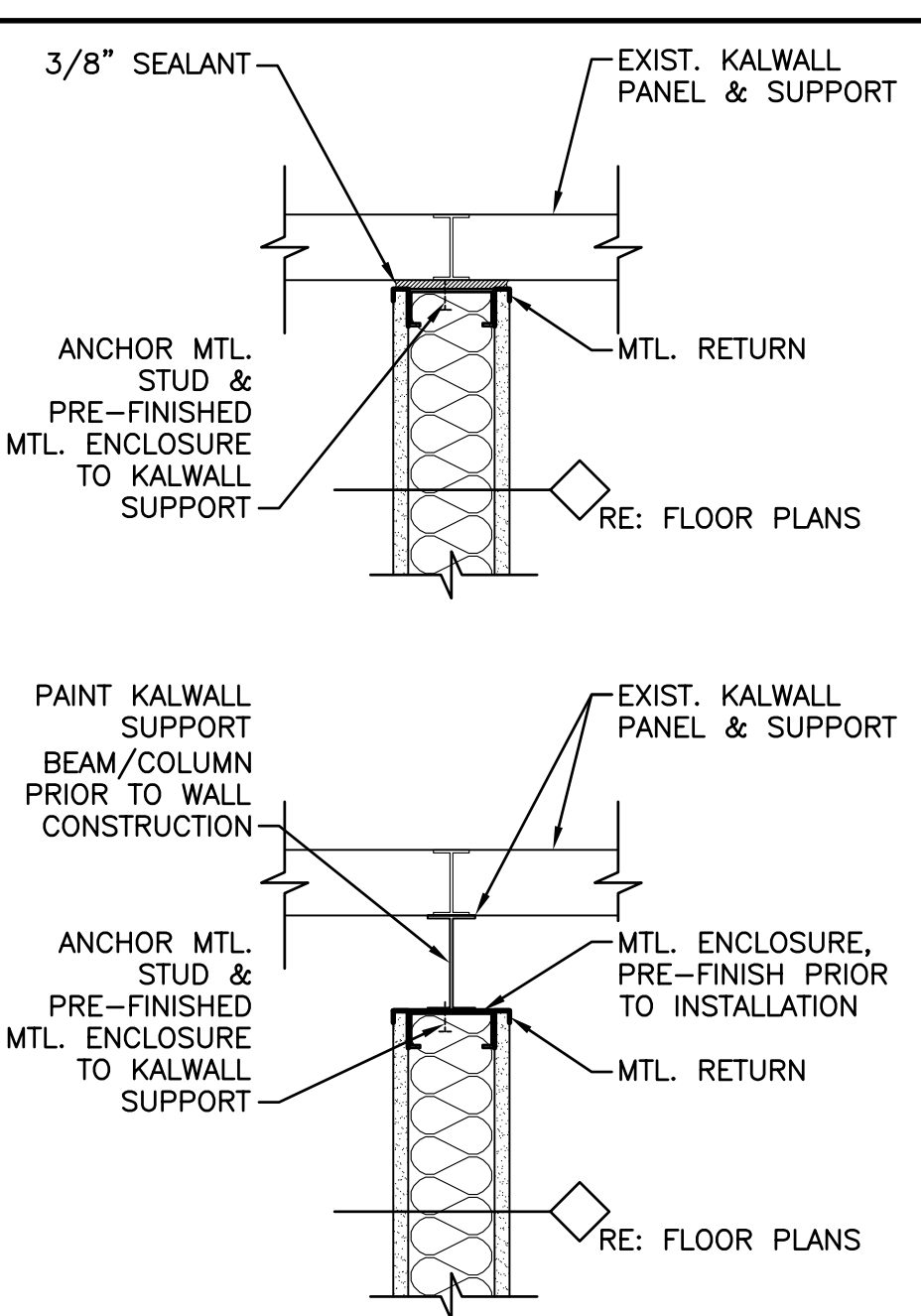
AE603

A11 DETAIL
1 1/2" = 1'-0"

AE101, AE105, AE106, AE107

A13 MULLION/JAMB
1 1/2" = 1'-0"

AE603



A1 PLAN DETAIL
1 1/2" = 1'-0"

AE101, AE105, AE106, AE107

A3 SIDELIGHT
3" = 1'-0"

AE603

A7 STOREFRONT
1 1/2" = 1'-0"

AE603

A11 DETAIL
1 1/2" = 1'-0"

AE101, AE105, AE106, AE107

A13 MULLION/JAMB
1 1/2" = 1'-0"

AE603

0	ISSUED FOR CONSTRUCTION	3-17-03
REV.	DESCRIPTION	DATE

ISSUED FOR CONSTRUCTION 3-17-03

CURRENT ISSUE STATUS:	

SMRT ARCHITECTURE ENGINEERING PLANNING
 144 Fore Street/P.O. Box 618
 Portland, Maine 04104
 tel. (207) 773-3846
 fax. (207) 772-1070

GLICKMAN LIBRARY
 UNIVERSITY OF SOUTHERN MAINE
 PORTLAND, MAINE

DOOR/WINDOW DETAILS & SECTIONS

SHEET TITLE:	AS NOTED	DATE:	3-17-03
SCALE:	SLB	GRAPHIC SCALE:	0" = 1"
PROJECT MANAGER:	CTB	SHEET No.	AE605
JOB CAP/DRAWN:	JLH	PROJECT No.	99092
A/E OF RECORD:	AE605-99092		
SMRT CAD FILE:	99092		