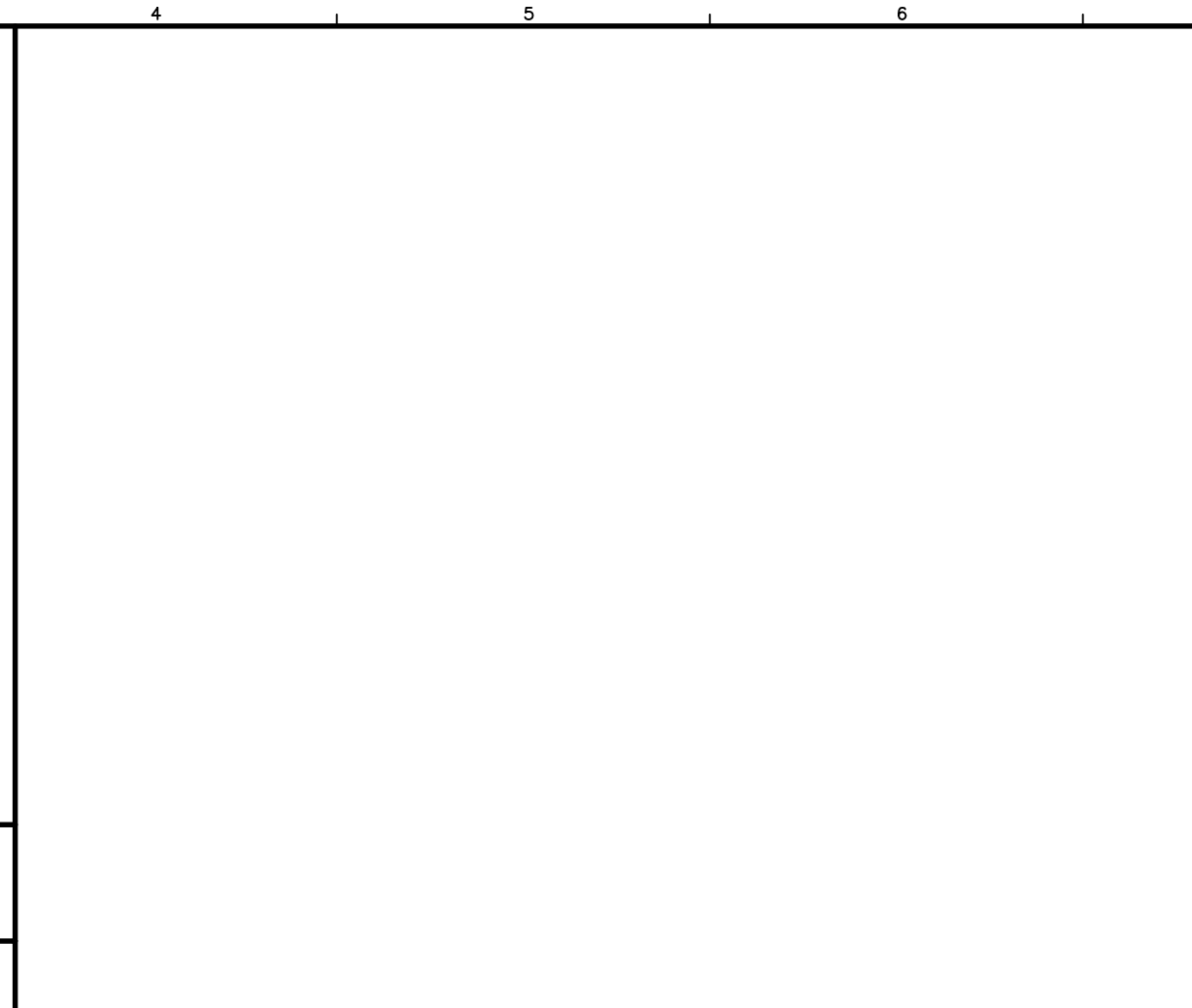
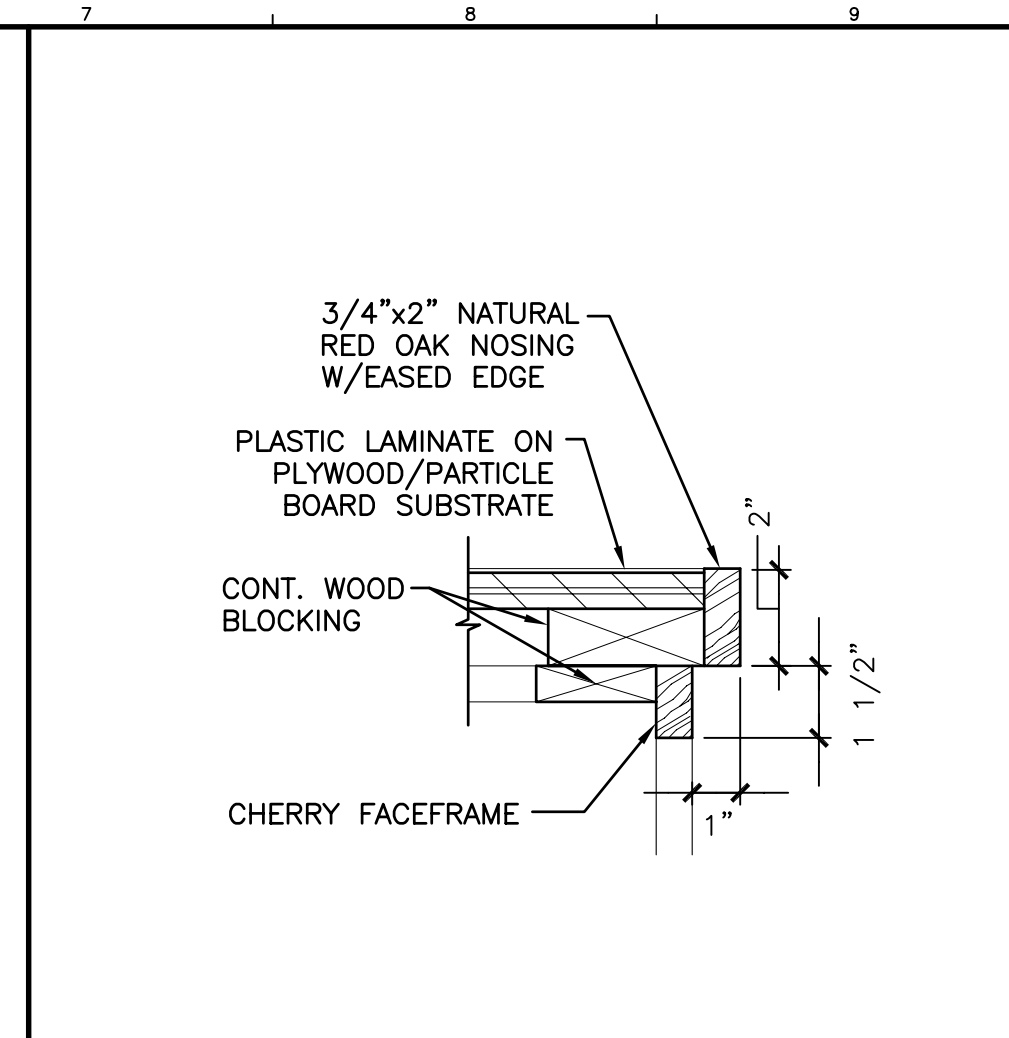


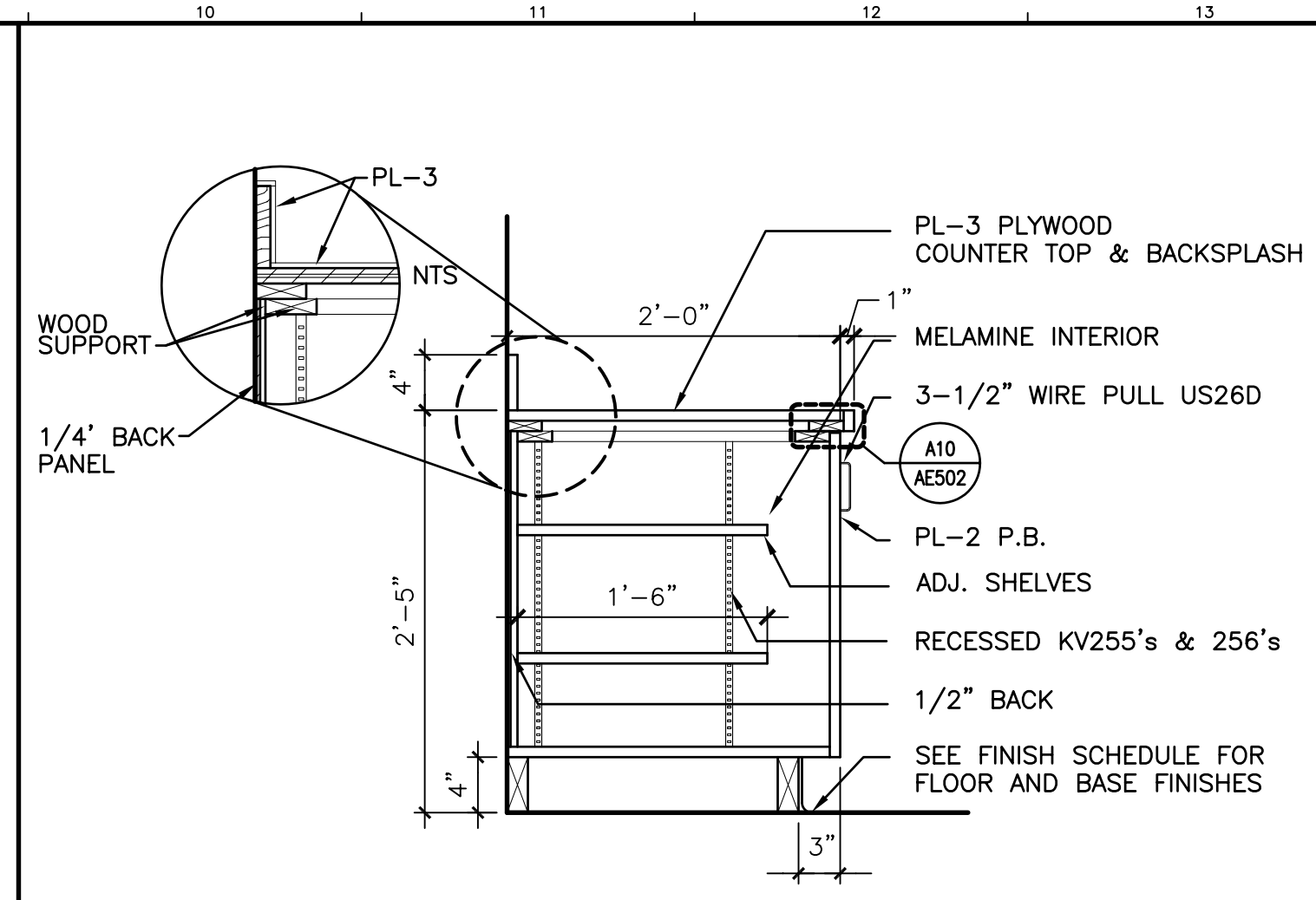
**P1 SECTION**  
1"=1'-0" AE210



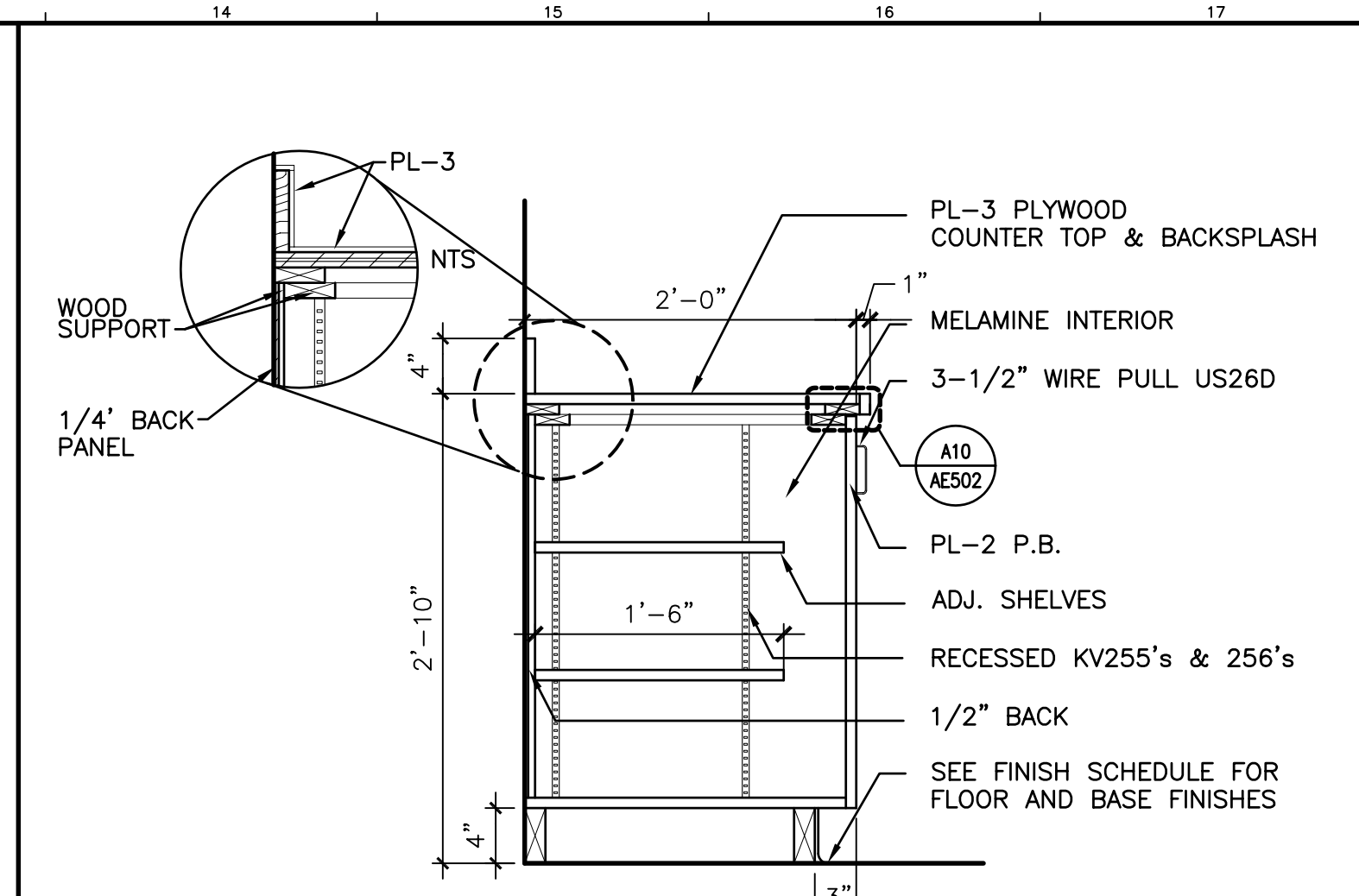
**H4 SECTION**  
1"=1'-0" AE210



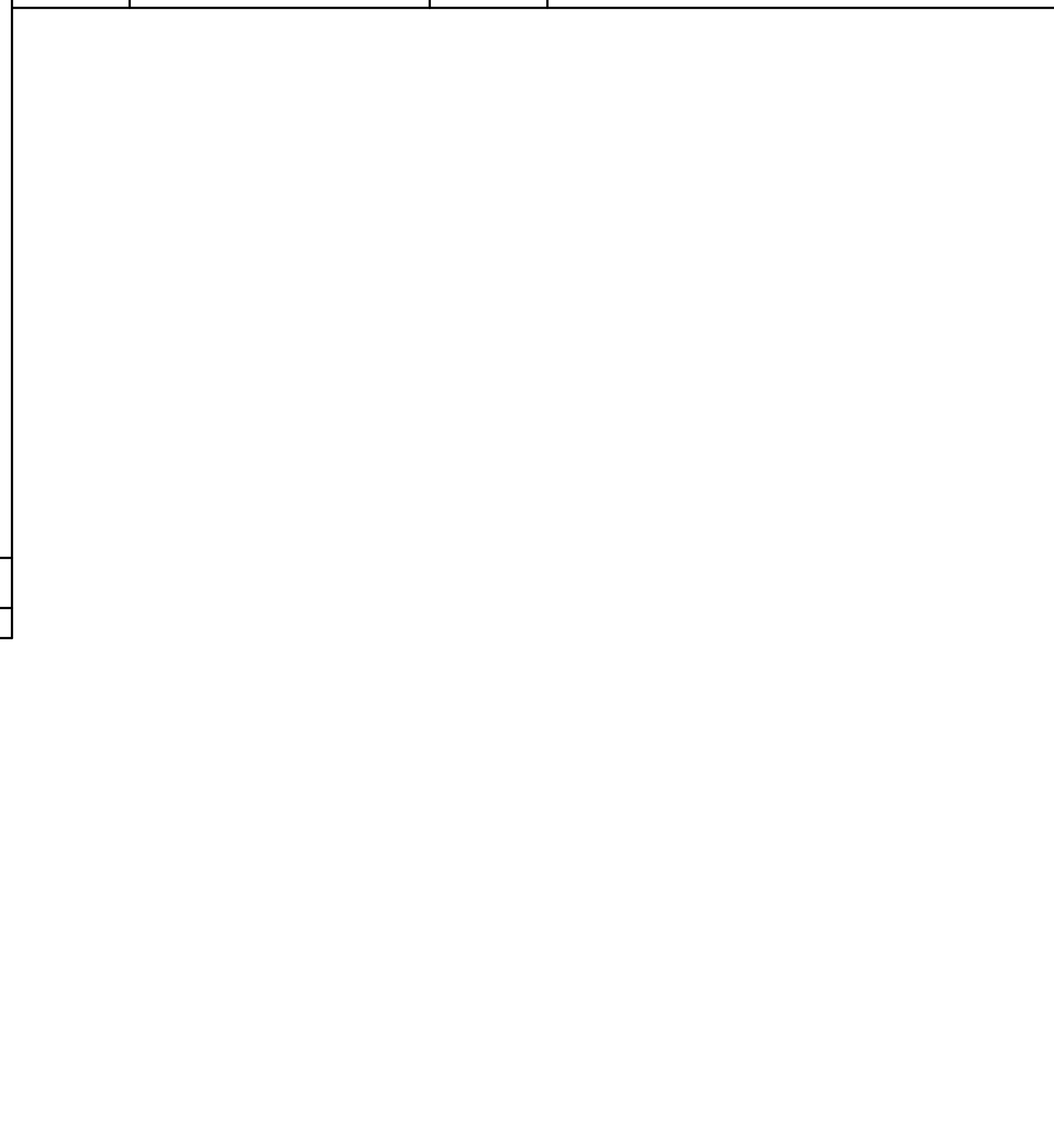
**N7 DETAIL**  
3/4"=1'-0" AE510, AE511



**N10 SECTION**  
1"=1'-0" AE210



**N13 SECTION**  
1"=1'-0" AE210

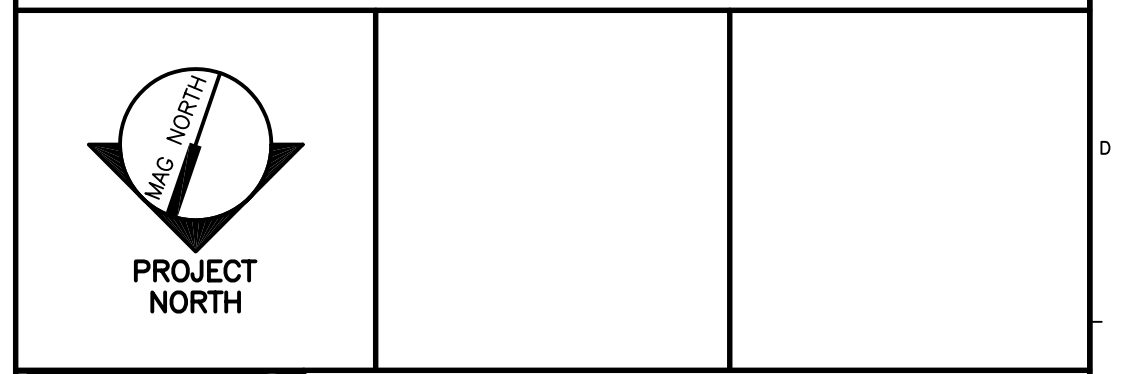


**D7 SOFFIT @ GREAT READING ROOM #726**  
3/4" = 1'-0"

**A7 SECTION @GREAT READING ROOM #726**  
1"=1'-0" AE514

0	ISSUED FOR CONSTRUCTION	3-17-03
REV.	DESCRIPTION	DATE

**ISSUED FOR CONSTRUCTION**  
**3-17-03**



ARCHITECTURE ENGINEERING PLANNING  
SMRT  
144 Fore Street/P.O. Box 618  
Portland, Maine 04104  
tel. (207) 772-3846  
fax. (207) 772-1070

**GLICKMAN LIBRARY**  
**UNIVERSITY OF SOUTHERN MAINE**  
PORTLAND, MAINE

**ALT MILLWORK & CASEWORK**  
**DETAILS**

SHEET TITLE:		3-17-03
SCALE:	AS NOTED	DATE:
PROJECT MANAGER:	SLB	GRAPHIC SCALE:
JOB CAP/DRAWN:	CTB	0" 1"
A/E OF RECORD:	JLH	SHEET No.
SMRT CAD FILE:	AE510-99092	<b>AE510</b>
PROJECT No.	99092	