

L1 ENLARGED ELECTRONIC CLASSROOM PLAN (518)

1/4"=1'-0" AE105

GENERAL NOTES:

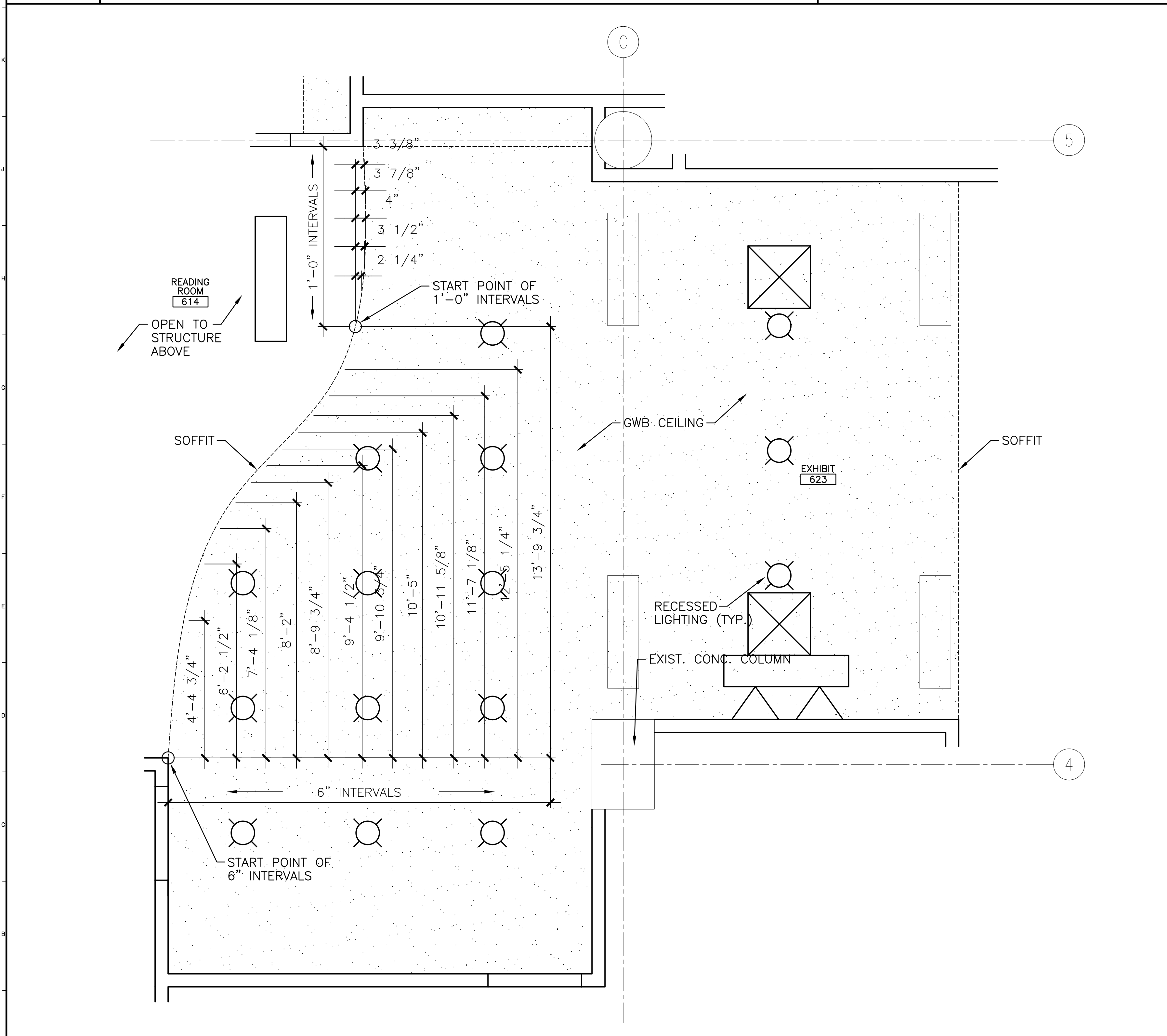
1. RE: G1002 FOR GENERAL NOTES.

ENLARGED FLOOR PLAN NOTES:

1. DIMENSIONS ARE GIVEN FROM CENTER OF NEW WALLS, CENTER OF DOOR OPENINGS, FACE OF MASONRY AND FACE OF EXISTING WALLS U.N.O.
2. "ALIGN" MEANS TO ALIGN TO FACE OF FINISHES.
3. RE: G1002 FOR TYPICAL MOUNTING HEIGHTS.
4. RECESSED TOILET ACCESSORIES (WHERE SPECIFIED) MAY NOT BE SHOWN GRAPHICALLY AS RECESSED.
5. RE: FLOOR PLANS FOR ADDITIONAL KEYNOTES.
6. PROVIDE BLOCKING FOR ALL WALL MOUNTED FIXTURES WHERE NEEDED.
7. PROVIDE ROUGH OPENING FOR FIRE RATED ACCESS PANELS AS NEEDED. (RE: MANUFACTURERS SPECS.)
8. RE: ROOM FINISH SCHEDULE & INTERIOR ELEVATIONS FOR FINISH TYPES & COLORS.
9. RE: FLOOR PLANS FOR PLAN DETAIL REFERENCE MARKERS.
10. G.C. TO VERIFY EXISTING ELEVATOR HOISTWAY FOR PREVIOUSLY INSTALLED ELEVATOR COMPONENTS. ANY REQUIRED COMPONENTS THAT DO NOT ALREADY EXIST ARE TO BE BROUGHT TO THE ATTENTION OF THE ARCHITECT AND SUPPLIED AS NEEDED. ANY REQUIRED DETAILS ARE TO BE APPROVED BY THE ARCHITECT PRIOR TO INSTALLATION.

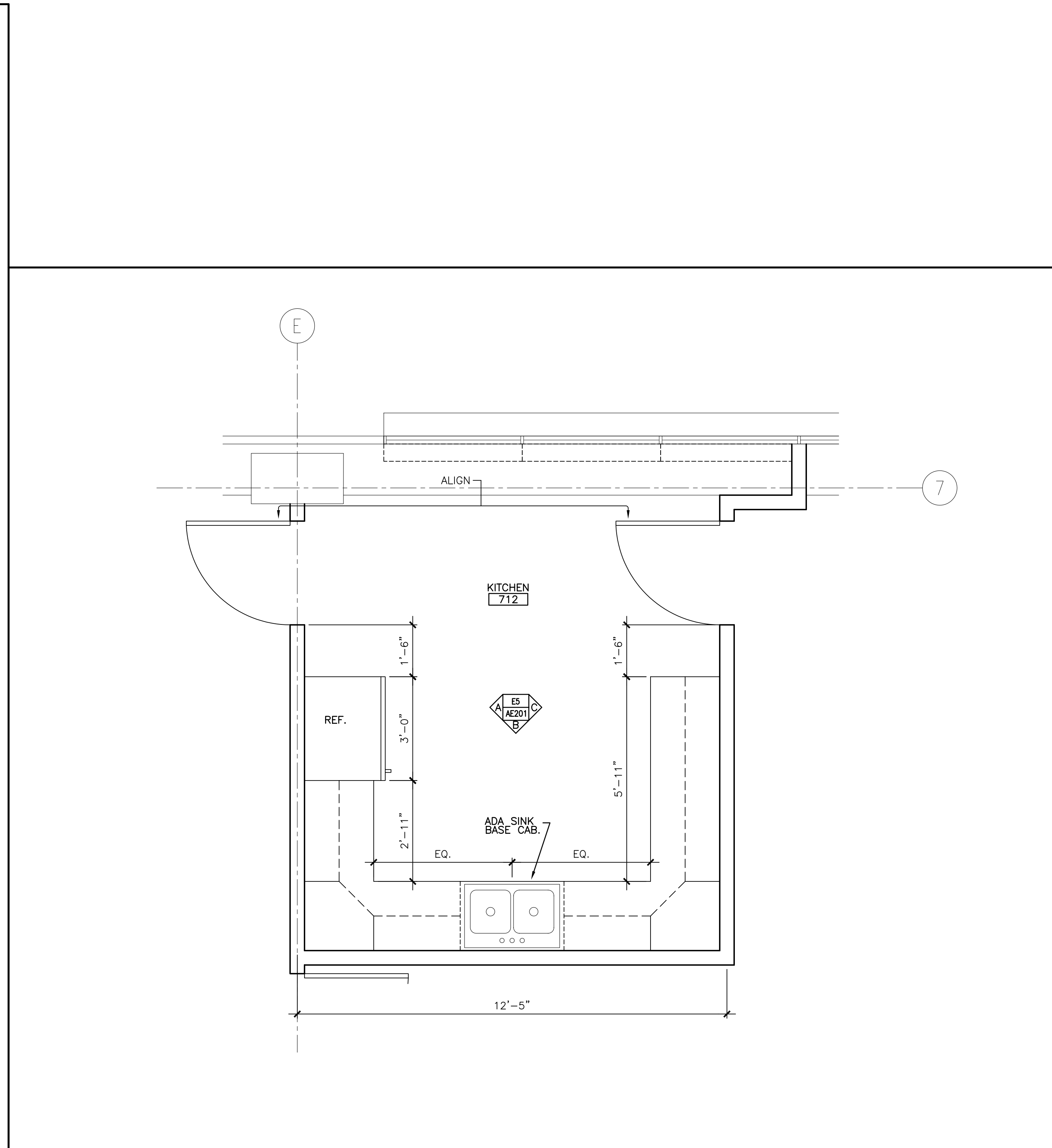
KEY NOTES:

- 2] CEILING RECESSED PROJECTION SCREEN
- 3] MARKER BOARD



A1 ENLARGED CEILING PLAN @ RM. #614

1/2"=1'-0" AE113



A10 LARGE SCALE KITCHEN PLAN

1/2"=1'-0" AE107

0	ISSUED FOR CONSTRUCTION	3-17-03
REV.	DESCRIPTION	DATE

ISSUED FOR CONSTRUCTION
3-17-03

CURRENT ISSUE STATUS:

PROJECT NORTH

ARCHITECTURE ENGINEERING PLANNING
SMRT
144 Fore Street/P.O. Box 618
Portland, Maine 04104
tel. (207) 772-3846
fax. (207) 772-1070

GLICKMAN LIBRARY
UNIVERSITY OF SOUTHERN MAINE
PORTLAND, MAINE

PROJECT: ENLARGED PLANS

SHEET TITLE:		DATE: 3-17-03
SCALE: AS NOTED	GRAPHIC SCALE: 0" = 1"	
PROJECT MANAGER: SLB	JOB CAP/DRAWN: CTB	
A/E OF RECORD: JLH	SMRT CAD FILE: AE402-99092	SHEET No.
PROJECT No. 99092		AE402