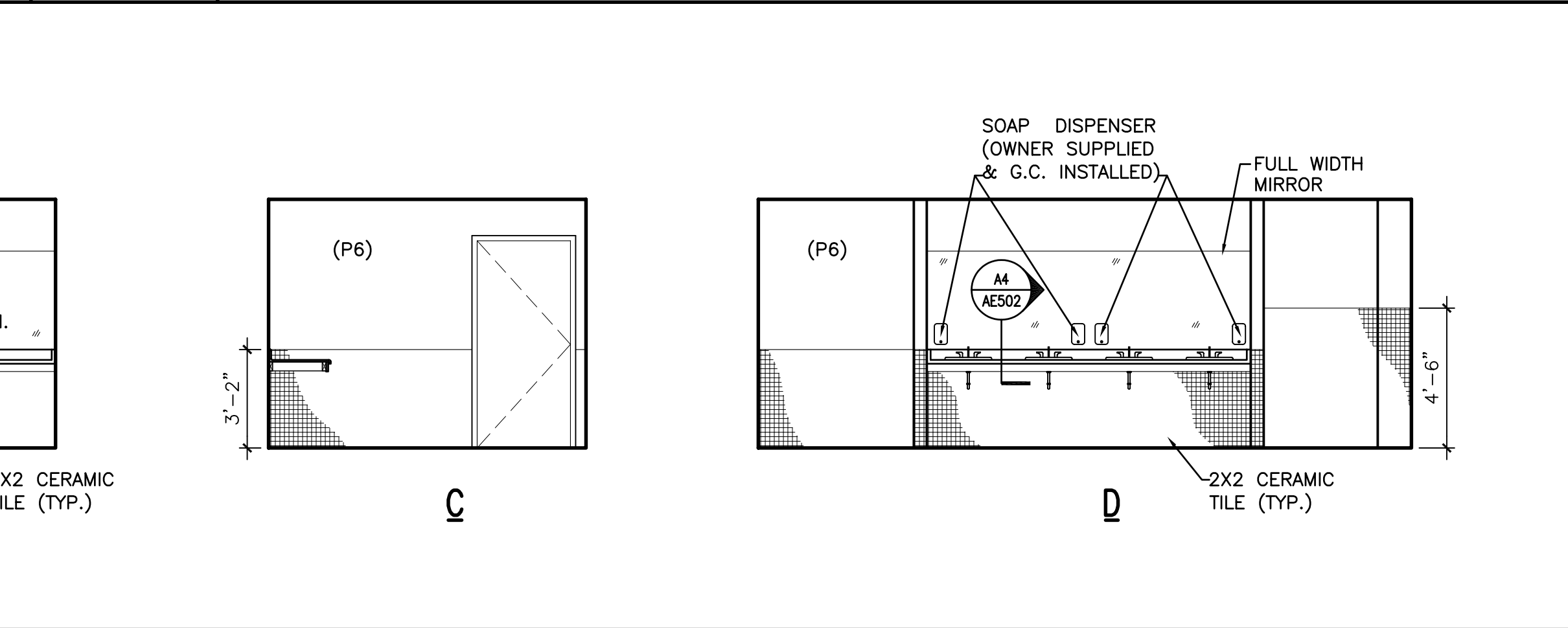
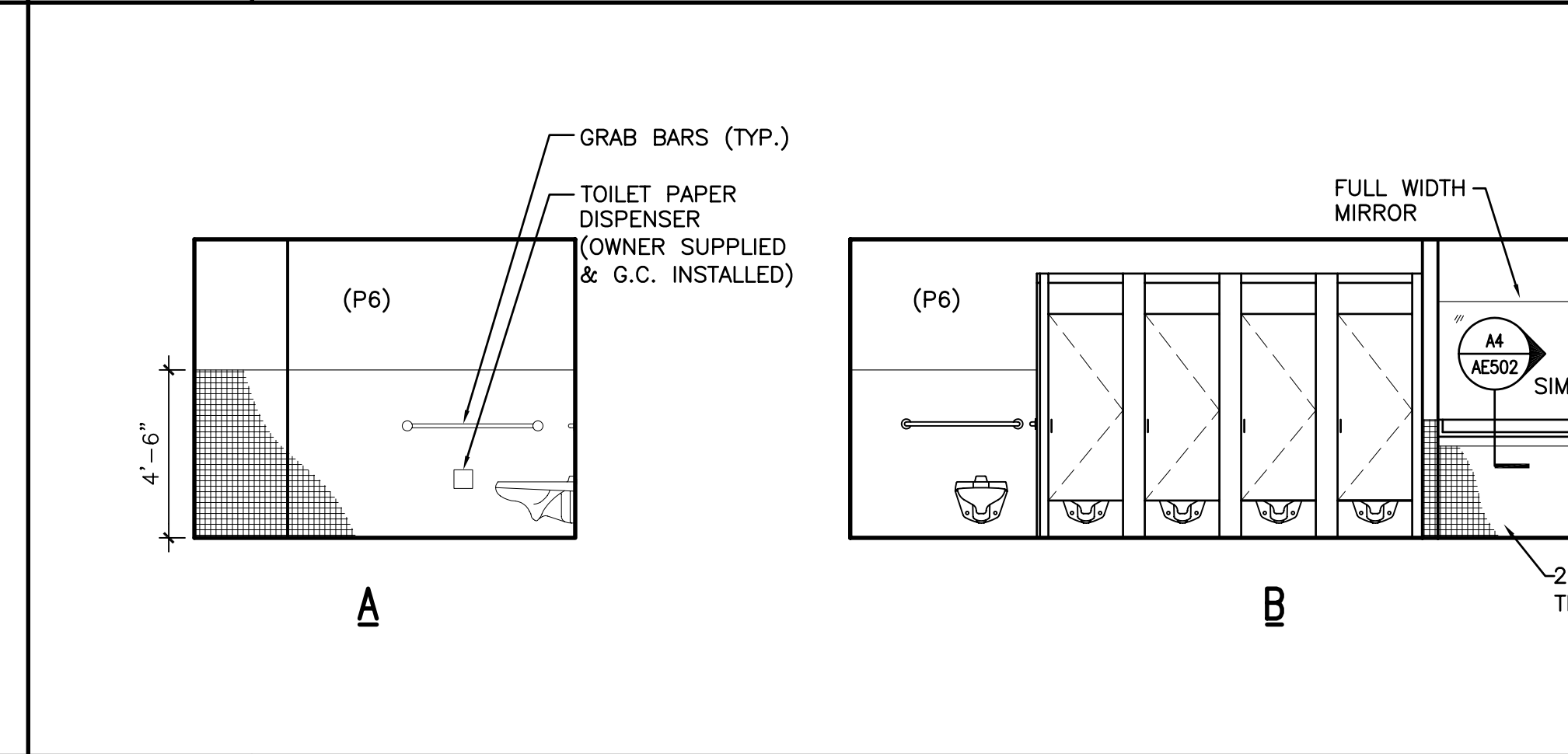
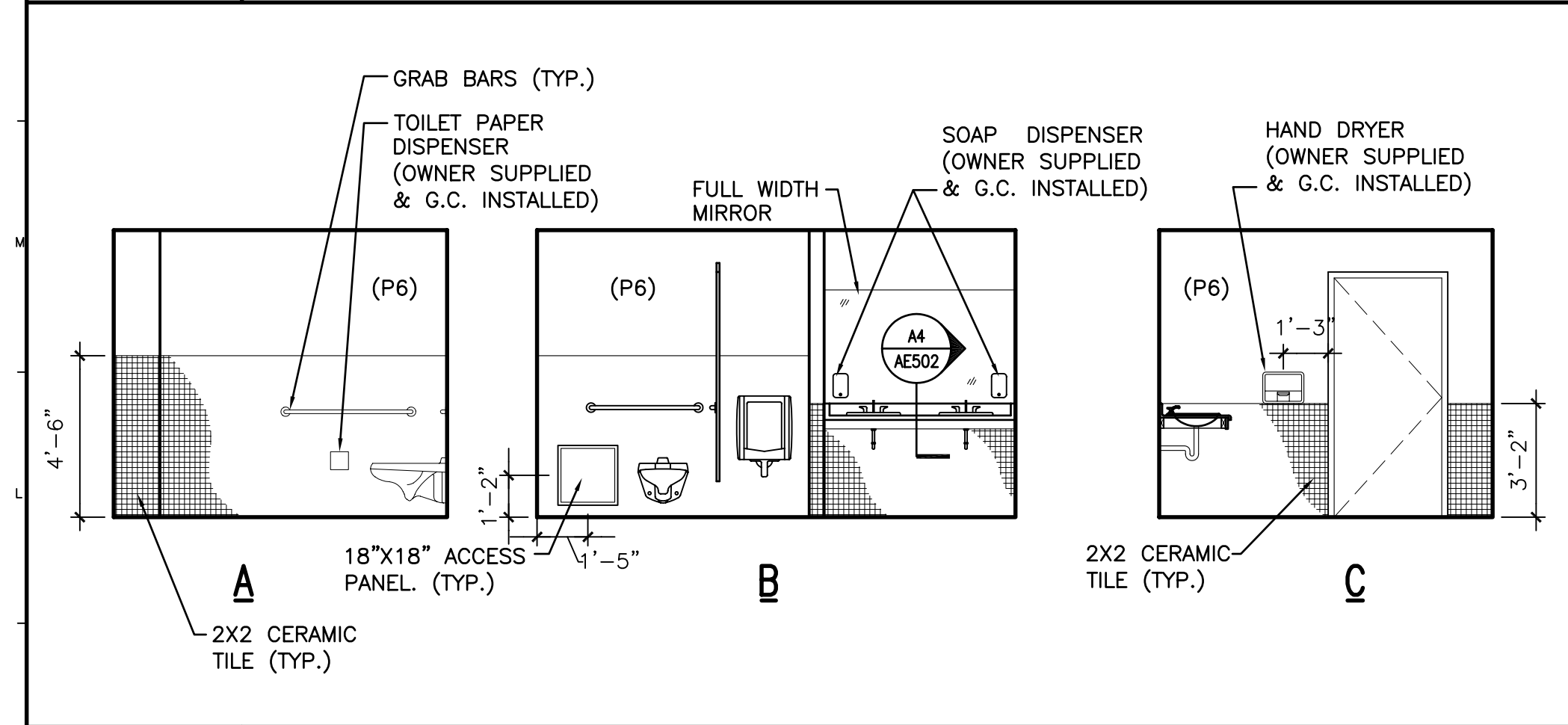


N1 TOILET ELEVATIONS
 1/4"=1'-0" AE401

N6 TOILET ELEVATIONS
 1/4"=1'-0" AE401

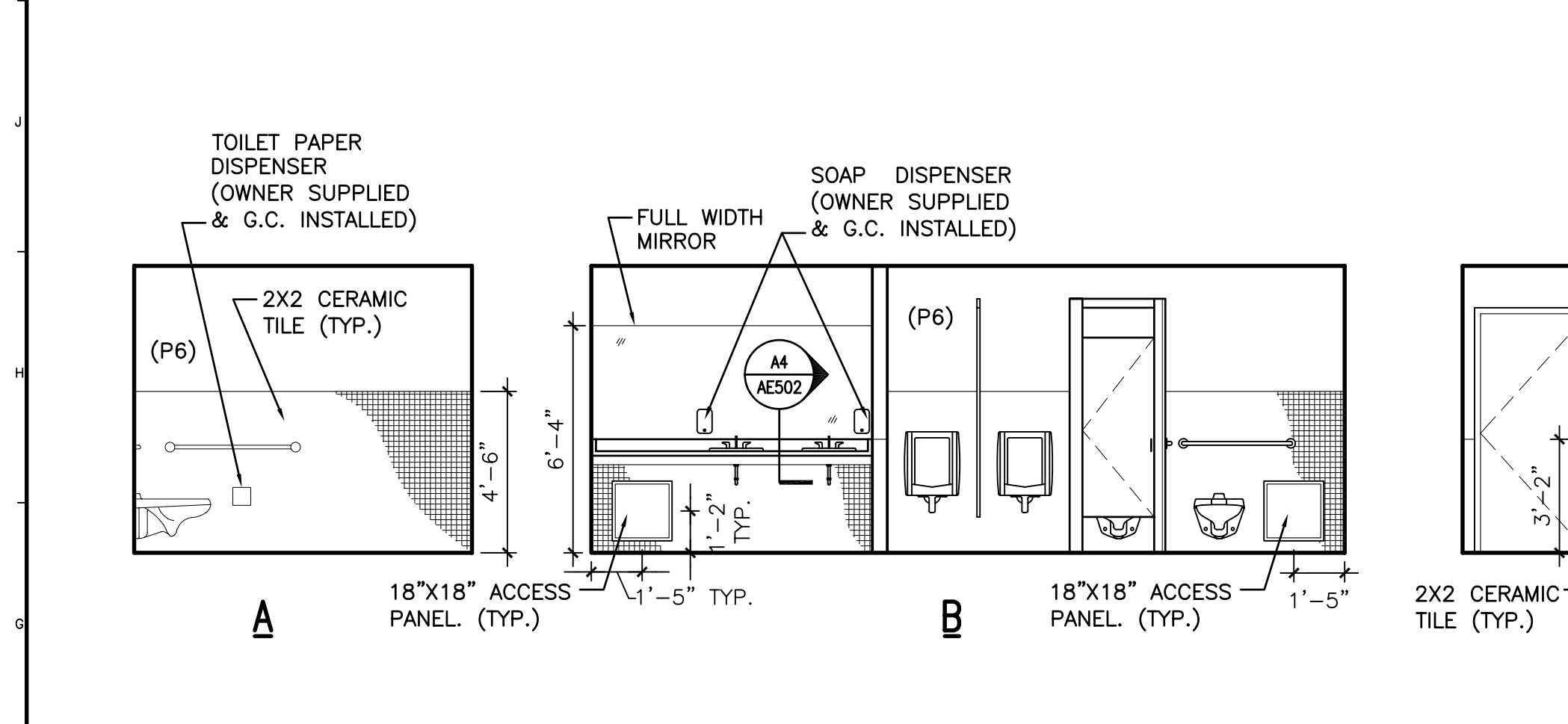
N11 TOILET ELEVATIONS
 1/4"=1'-0" AE401



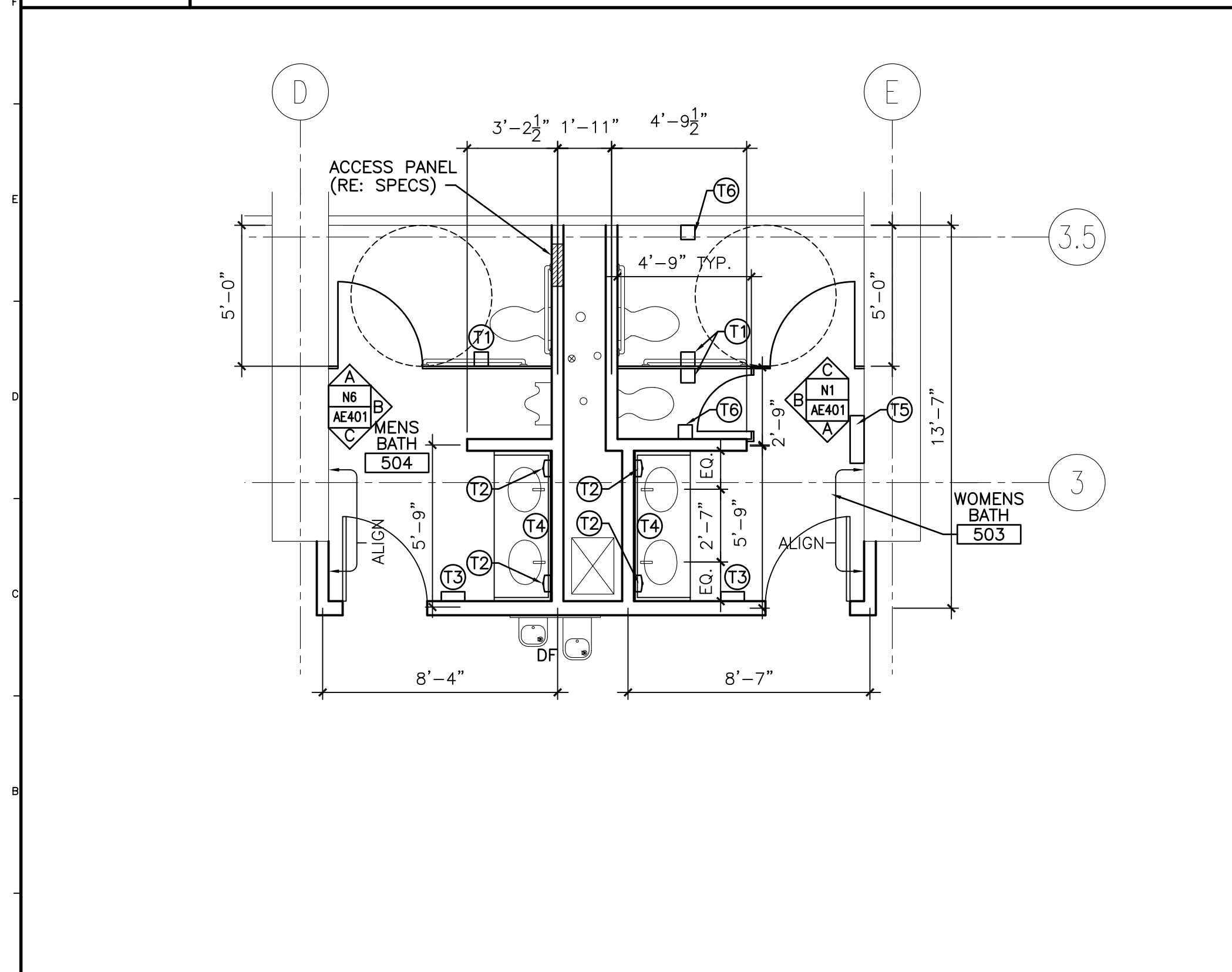
K1 TOILET ELEVATIONS
 1/4"=1'-0" AE401

K6 TOILET ELEVATIONS
 1/4"=1'-0" AE401

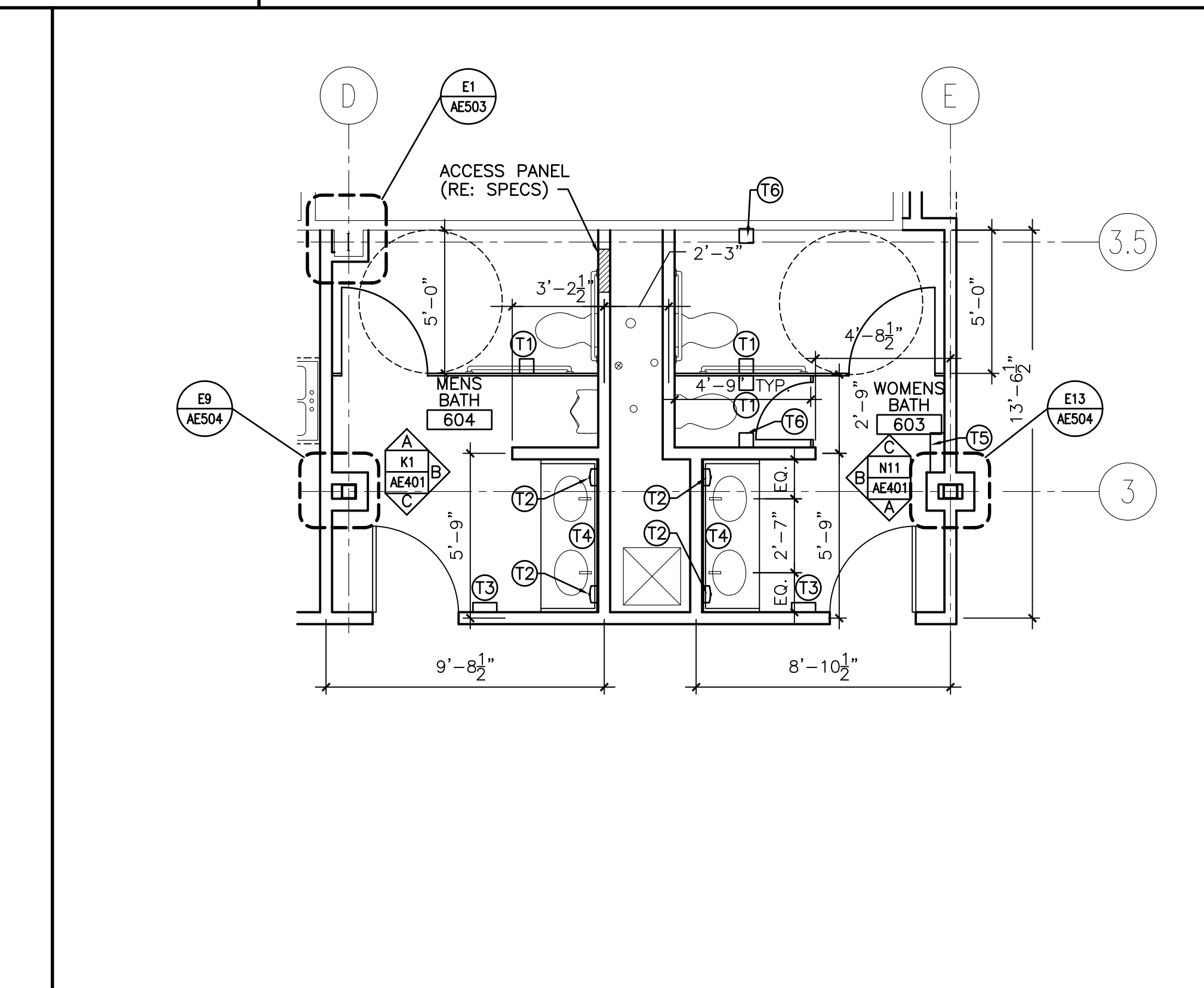
K11 TOILET ELEVATIONS
 1/4"=1'-0" AE401



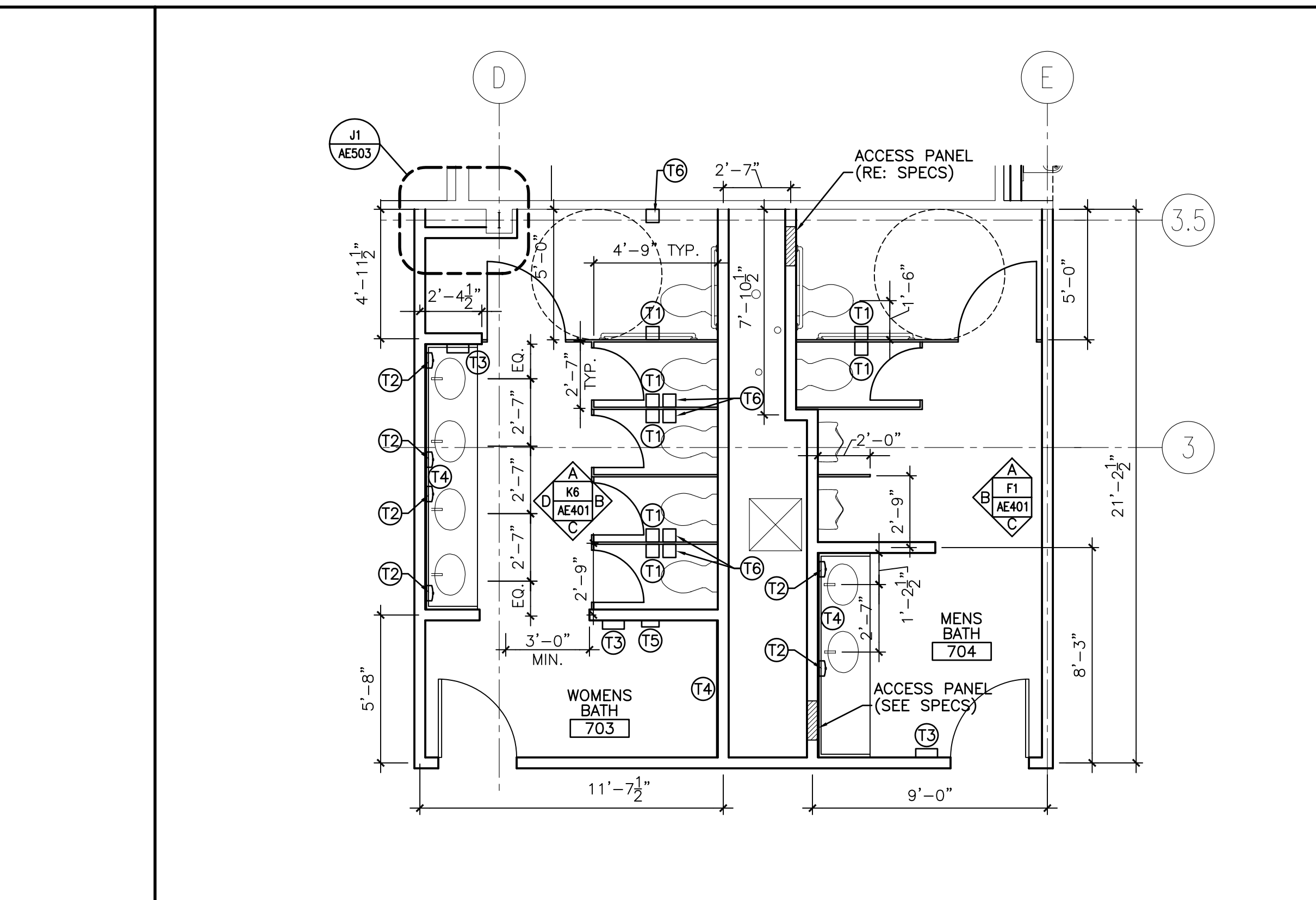
F1 TOILET ELEVATIONS
 1/4"=1'-0" AE401



A1 LARGE SCALE TOILET PLANS- FIFTH FLOOR
 1/4"=1'-0" AE105



A6 LARGE SCALE TOILET PLANS- SIXTH FLOOR
 1/4"=1'-0" AE106



A12 LARGE SCALE TOILET PLANS- SEVENTH FLOOR
 1/4"=1'-0" AE107

GENERAL NOTES:

- RE: G1002 FOR GENERAL NOTES.
- ENLARGED FLOOR PLAN NOTES:**
 - DIMENSIONS ARE GIVEN FROM CENTER OF NEW WALLS, CENTER OF DOOR OPENINGS, FACE OF MASONRY AND FACE OF EXISTING WALLS U.N.O.
 - "ALIGN" MEANS TO ALIGN TO FACE OF FINISHES.
 - RE: G1002 FOR TYPICAL MOUNTING HEIGHTS.
 - RECESSED TOILET ACCESSORIES (WHERE SPECIFIED) MAY NOT BE SHOWN GRAPHICALLY AS RECESSED.
 - RE: FLOOR PLANS FOR ADDITIONAL KEYNOTES.
 - PROVIDE BLOCKING FOR ALL WALL MOUNTED FIXTURES WHERE NEEDED.
 - PROVIDE ROUGH OPENING FOR FIRE RATED ACCESS PANELS AS NEEDED. (RE: MANUFACTURERS SPECS.)
 - ROOM FINISH SCHEDULE & INTERIOR ELEVATIONS FOR FINISH TYPES & COLORS.
 - RE: FLOOR PLANS FOR PLAN DETAIL REFERENCE MARKERS.
 - G.C. TO VERIFY EXISTING ELEVATOR HOISTWAY FOR PREVIOUSLY INSTALLED ELEVATOR COMPONENTS. ANY REQUIRED COMPONENTS THAT DO NOT ALREADY EXIST ARE TO BE BROUGHT TO THE ATTENTION OF THE ARCHITECT AND SUPPLIED AS NEEDED. ANY REQUIRED DETAILS ARE TO BE APPROVED BY THE ARCHITECT PRIOR TO INSTALLATION.

KEY NOTES:

- 2 CEILING RECESSED PROJECTION SCREEN
- 3 MARKER BOARD

TOILET ACCESSORIES KEYNOTES:

- 11 TOILET PAPER DISPENSER (OWNER SUPPLIED, G.C. INSTALLED)
- 12 SOAP DISPENSER (OWNER SUPPLIED, G.C. INSTALLED)
- 13 HAND DRYER (OWNER SUPPLIED, G.C. INSTALLED)
- 14 MIRROR
- 15 SANITARY NAPKIN DISPENSER
- 16 SANITARY NAPKIN DISPOSAL

0	ISSUED FOR CONSTRUCTION	3-17-03
REV.	DESCRIPTION	DATE

ISSUED FOR CONSTRUCTION 3-17-03
 CURRENT ISSUE STATUS:



ARCHITECTURE ENGINEERING PLANNING
 SMRT
 144 Fore Street/P.O. Box 618
 Portland, Maine 04104
 tel. (207) 772-3846
 fax. (207) 772-1070

GLICKMAN LIBRARY
 UNIVERSITY OF SOUTHERN MAINE
 PORTLAND, MAINE

ENLARGED PLANS

SHEET TITLE:		DATE: 3-17-03
SCALE: AS NOTED	PROJECT MANAGER: SLB	GRAPHIC SCALE: 0" = 1'
JOB CAP/DRAWN: CTB	A/E OF RECORD: JLH	SHEET No.
SMRT CAD FILE: AE401-99092	PROJECT No. 99092	AE401