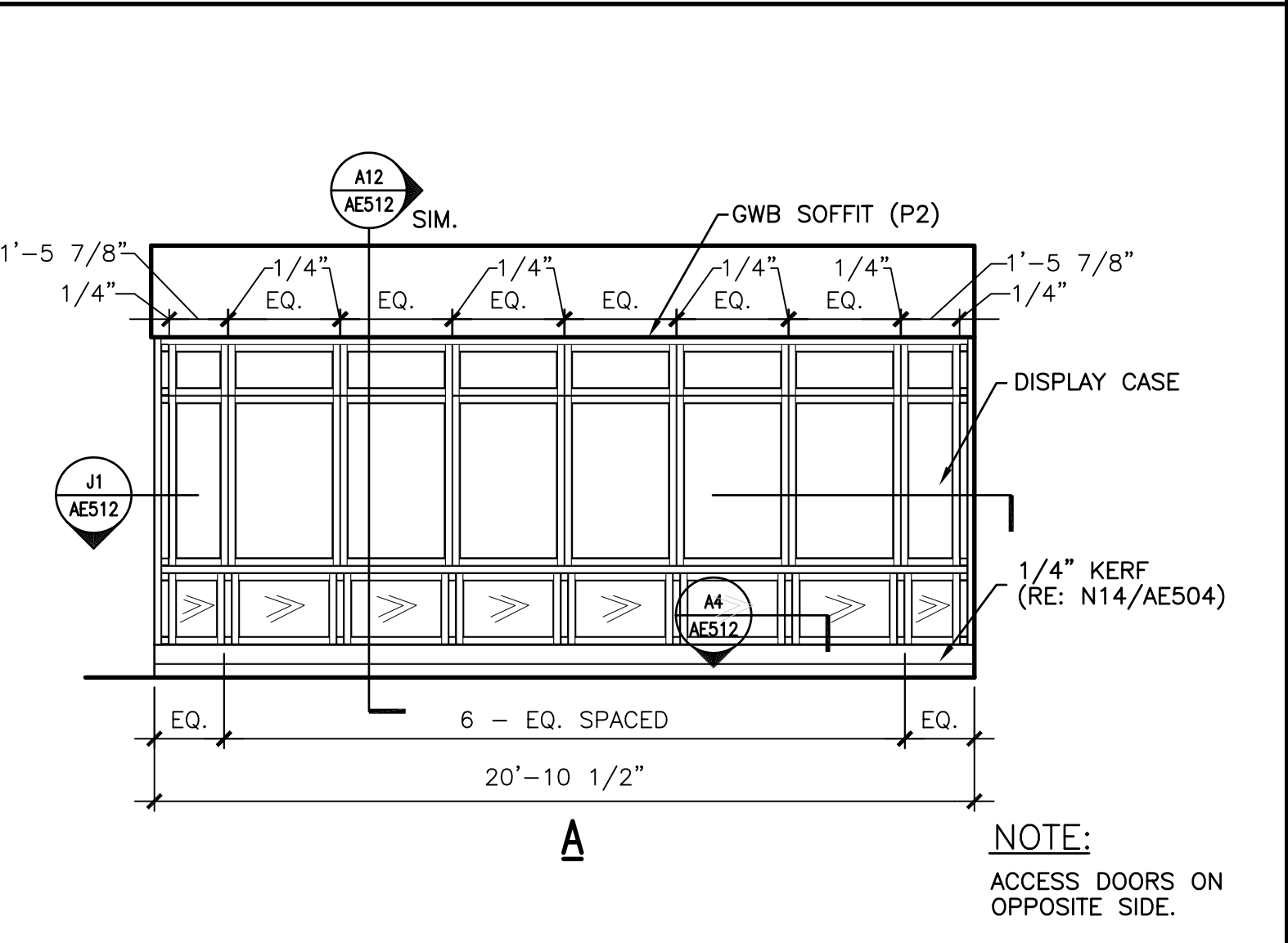
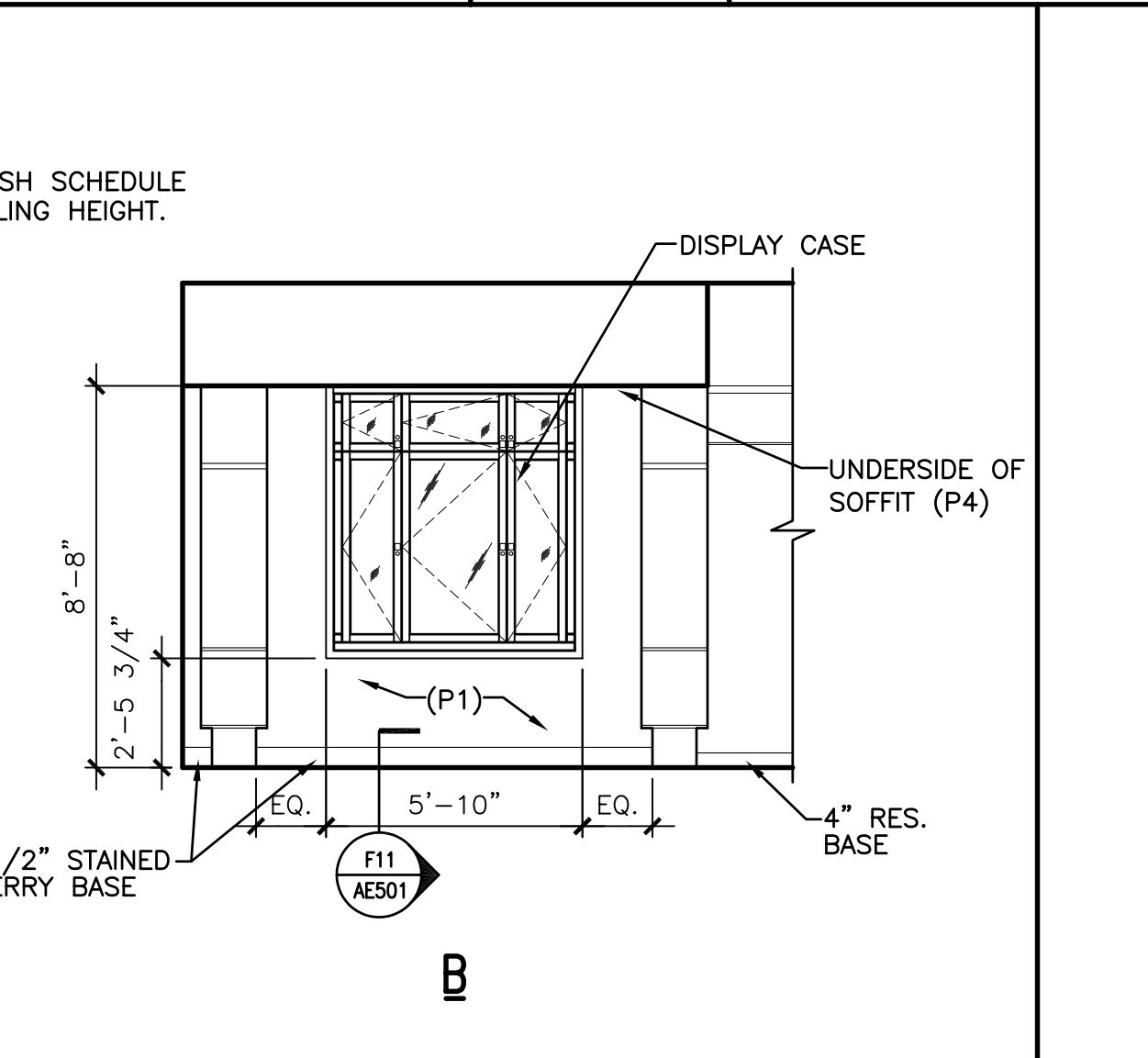
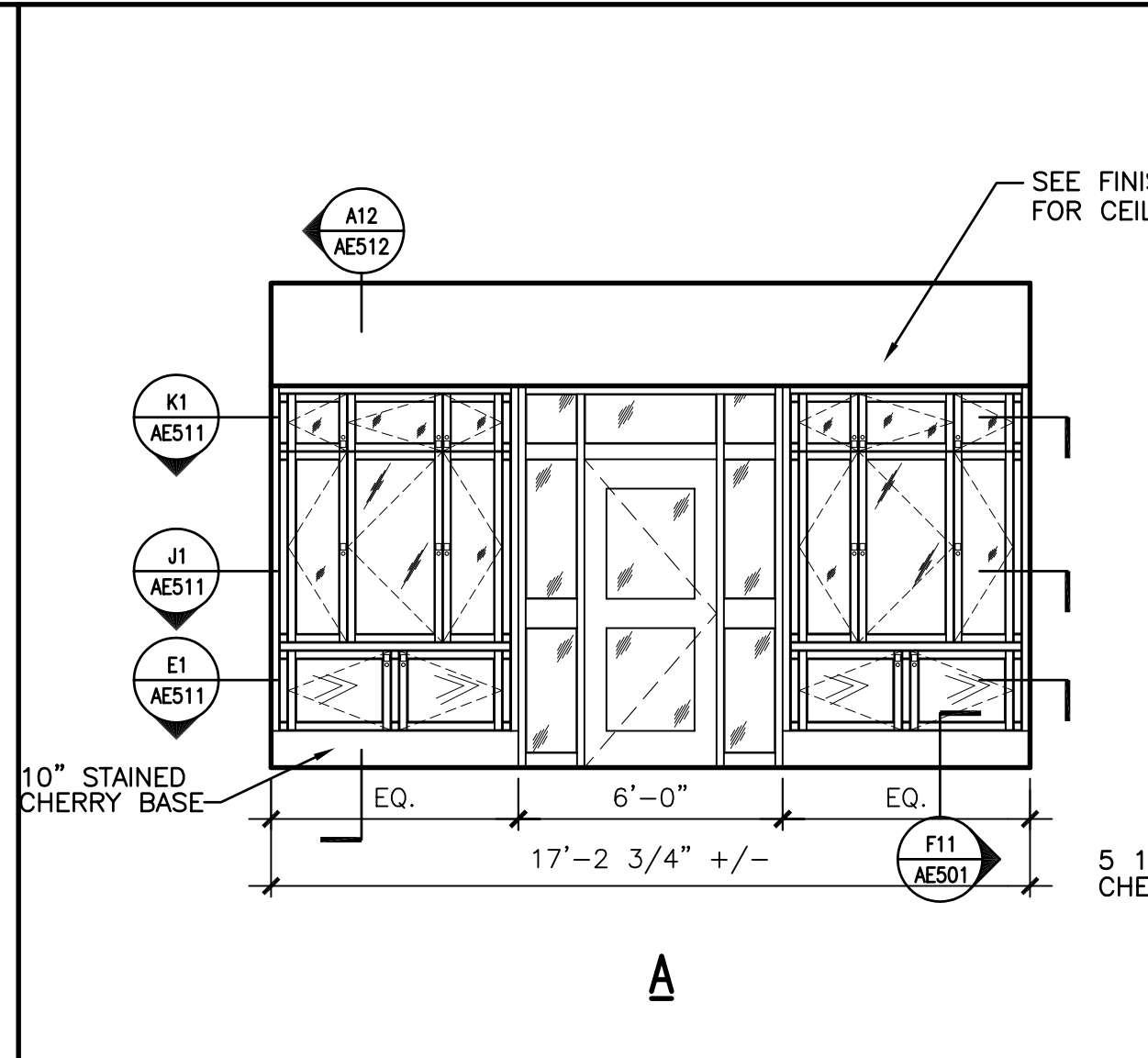
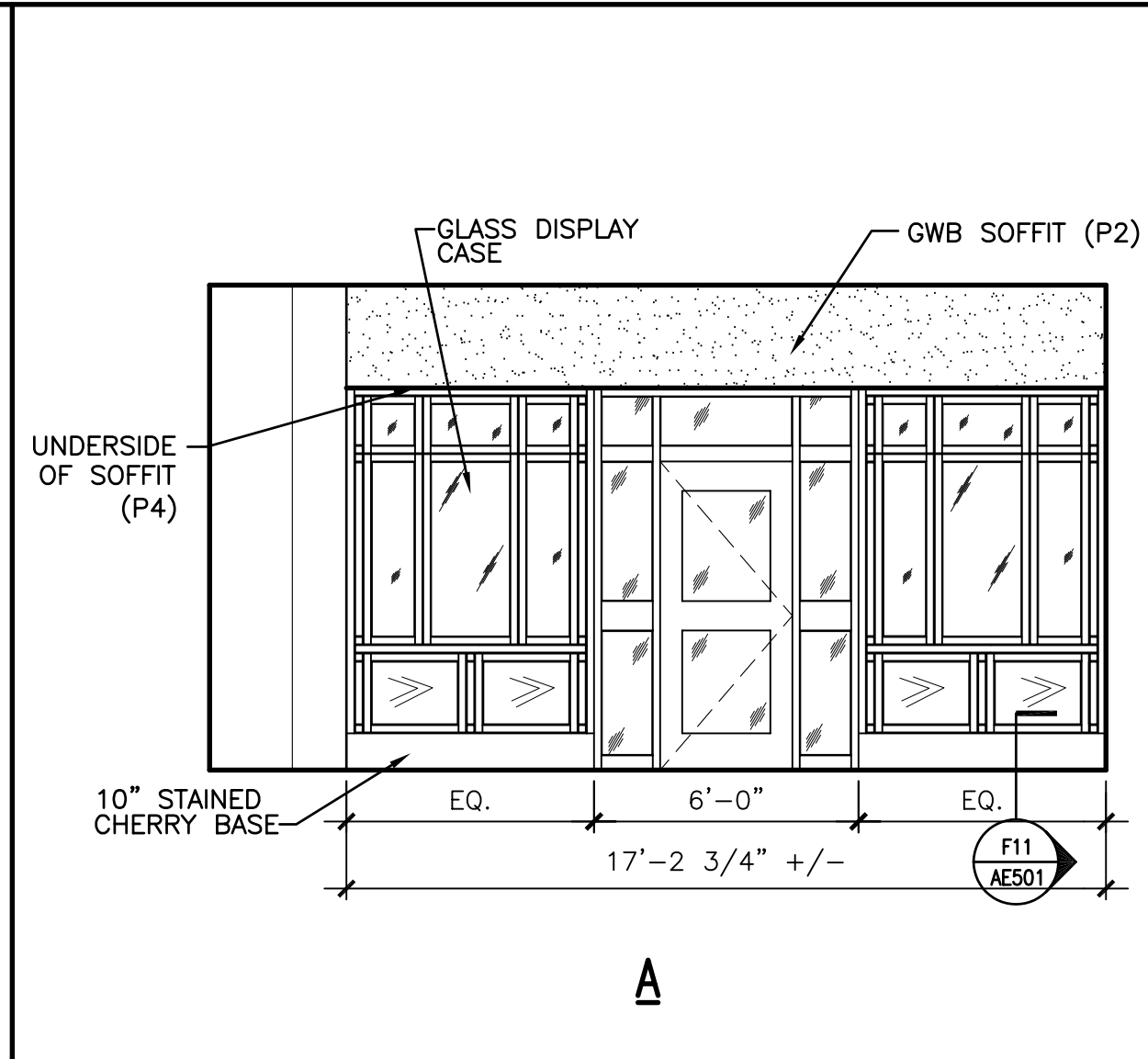
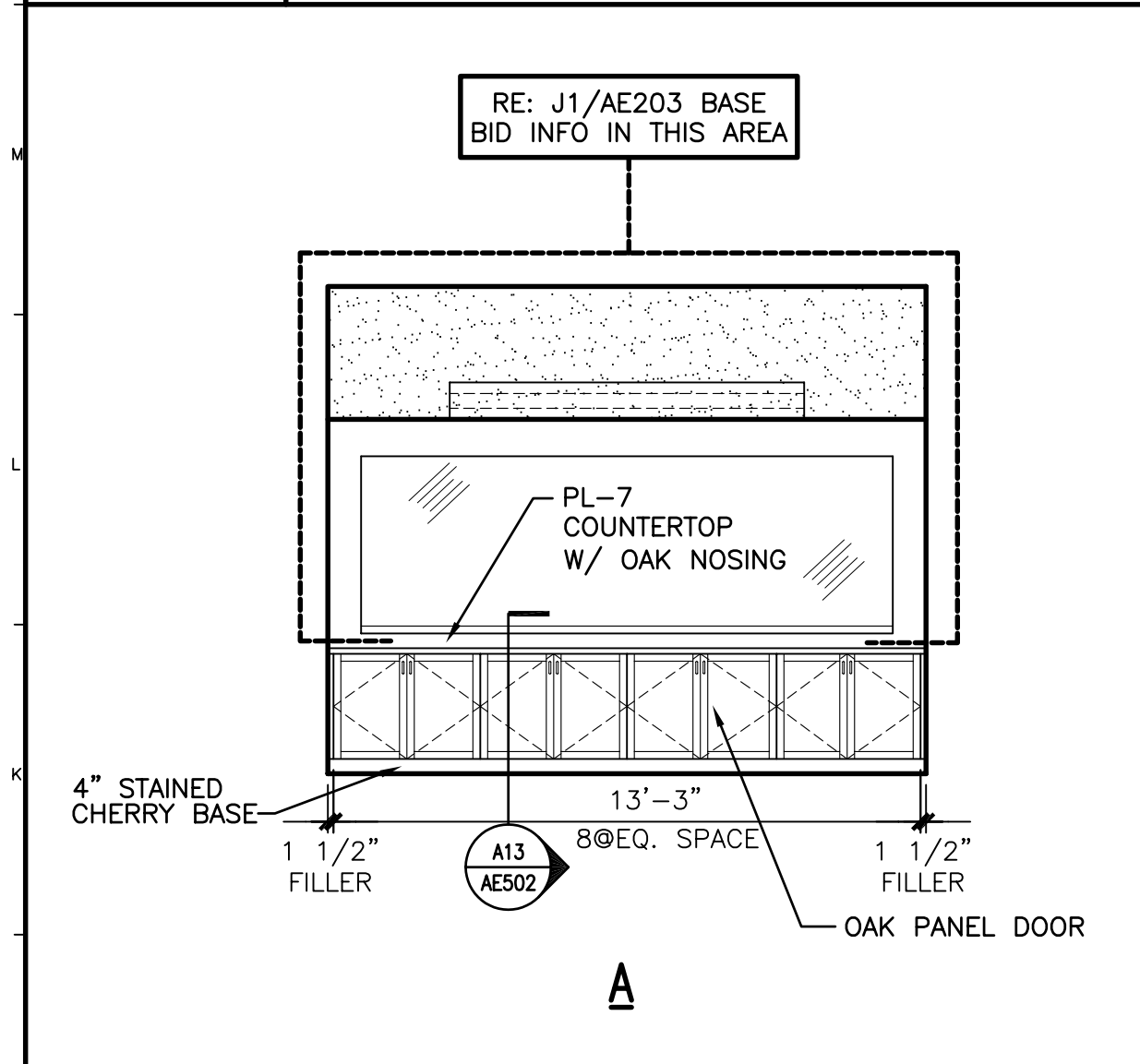


GENERAL NOTES:
 1. RE: G1002 FOR GENERAL NOTES.

INTERIOR ELEVATION NOTES:
 1. RE: G1002 FOR TYPICAL MOUNTING HEIGHTS.
 2. RE: PLANS FOR IDENTIFICATION OF ITEMS SHOWN IN ELEVATION.
 3. PROVIDE SCREBE STRIPS FOR ALL CABINETS AGAINST WALLS. CAULK WITH SPECIFIED SEALANT.
 4. ALL EXPOSED CABINET END PANELS TO BE FINISHED TO MATCH CABINETS AS SPECIFIED.
 5. PROVIDE A 1 1/2\"/>

N1 INT. ELEVATION @RM. #726
 1/4"=1'-0" AE120

N12 INTERIOR ELEVATIONS @RM. #606
 1/4"=1'-0" AE120



MATERIAL LEGEND:
 (BASE & PAINT SELECTIONS WILL MATCH EXISTING. SEE DRAWINGS FOR DISTRIBUTION)

PL-1: WILSONART D304-60 ROSE BLUFF
 PL-2: WILSONART D478-60 AMAZON
 PL-3: WILSONART 4656-60 BRONZE LEGACY
 PL-4: WILSONART 1787-60 OXIDE
 PL-5: FORMICA 4748 DECO METAL
 PL-6: WILSONART 4739-60 CLAY POLLETA
 PL-7: TBD
 PL-8: TBD

P1: PRIMARY WALLS- BENJAMIN MOORE BM150
 P2: ABOVE 2\"/>

J1 INT. ELEVATION @RM. #612
 1/4"=1'-0" AE120

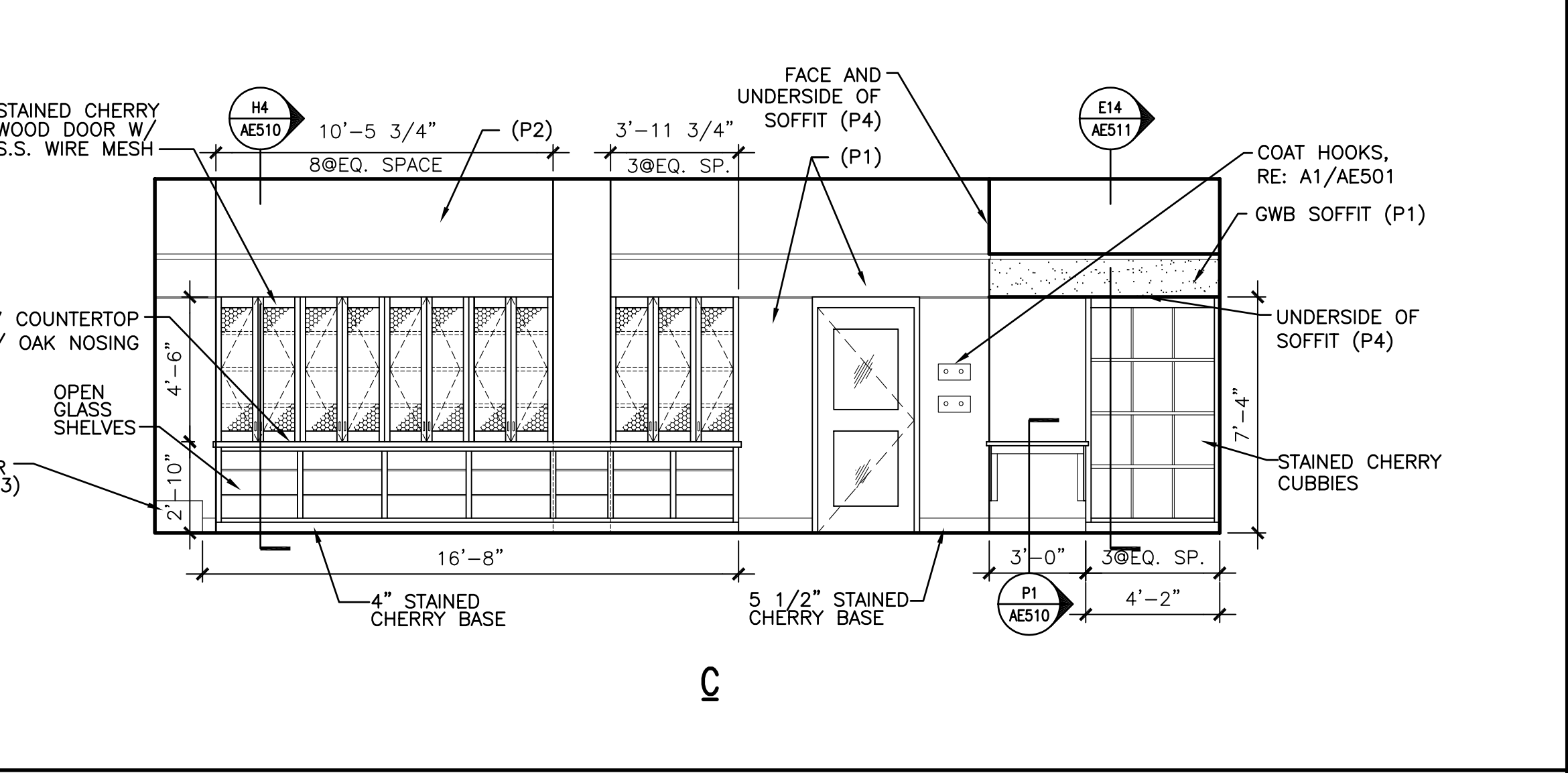
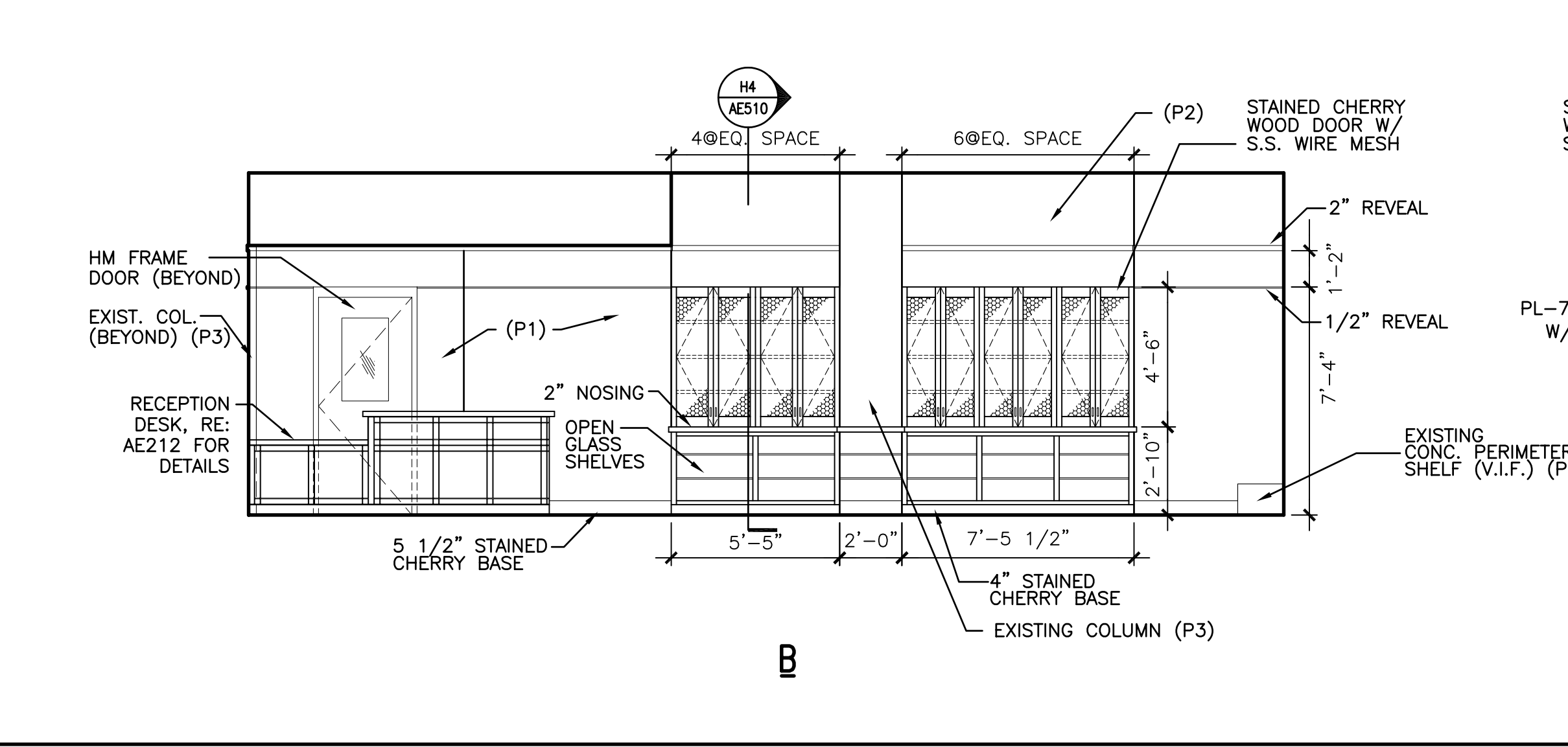
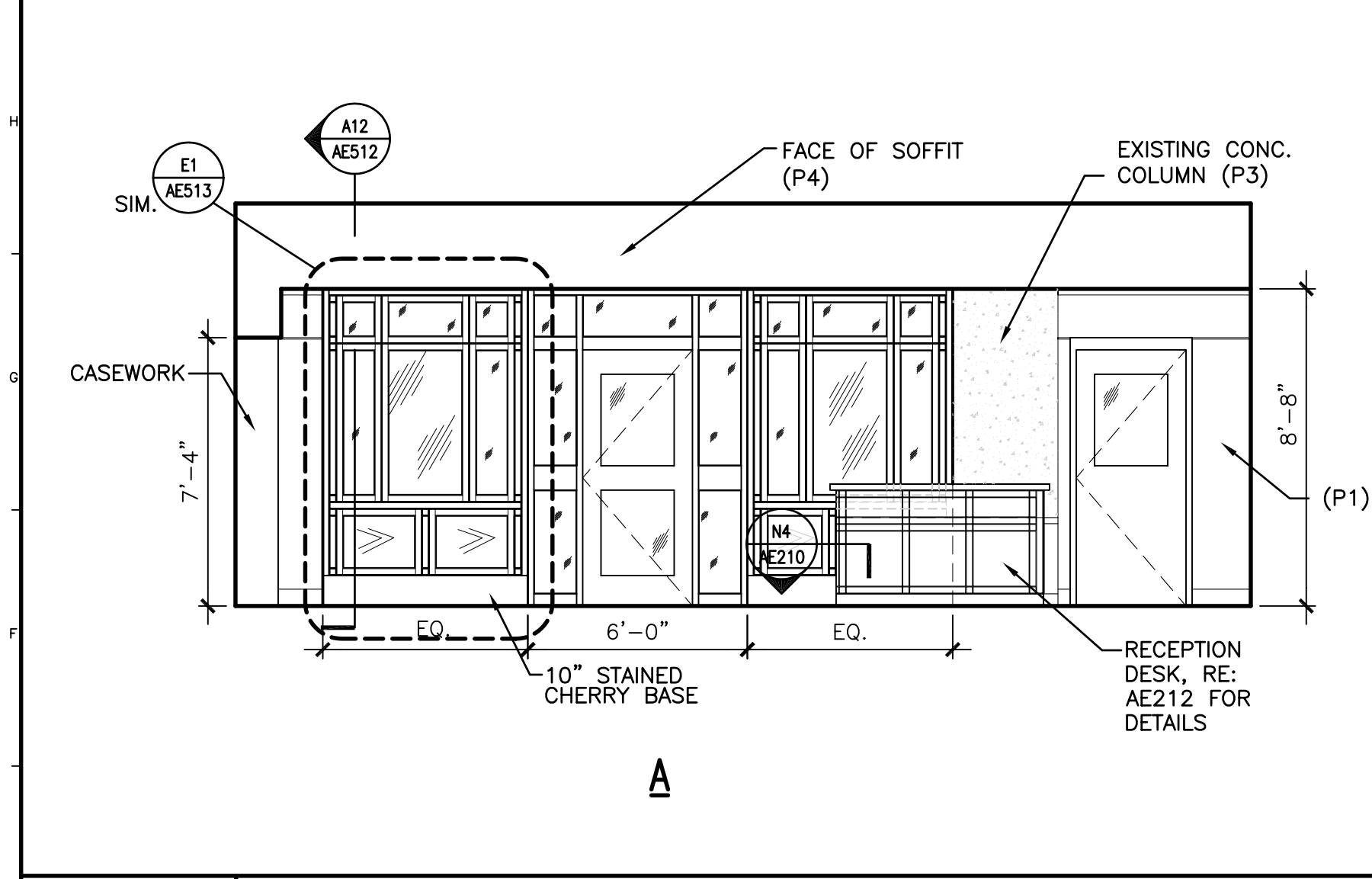
J4 INT. ELEVATION @RM. #606
 1/4"=1'-0" AE120

J5 INTERIOR ELEVATIONS @RM. #623
 1/4"=1'-0" AE120

J13 INT. ELEVATION @ CORR. #713
 1/4"=1'-0" AE120

J13 INT. ELEVATION @ CORR. #713
 1/4"=1'-0" AE120

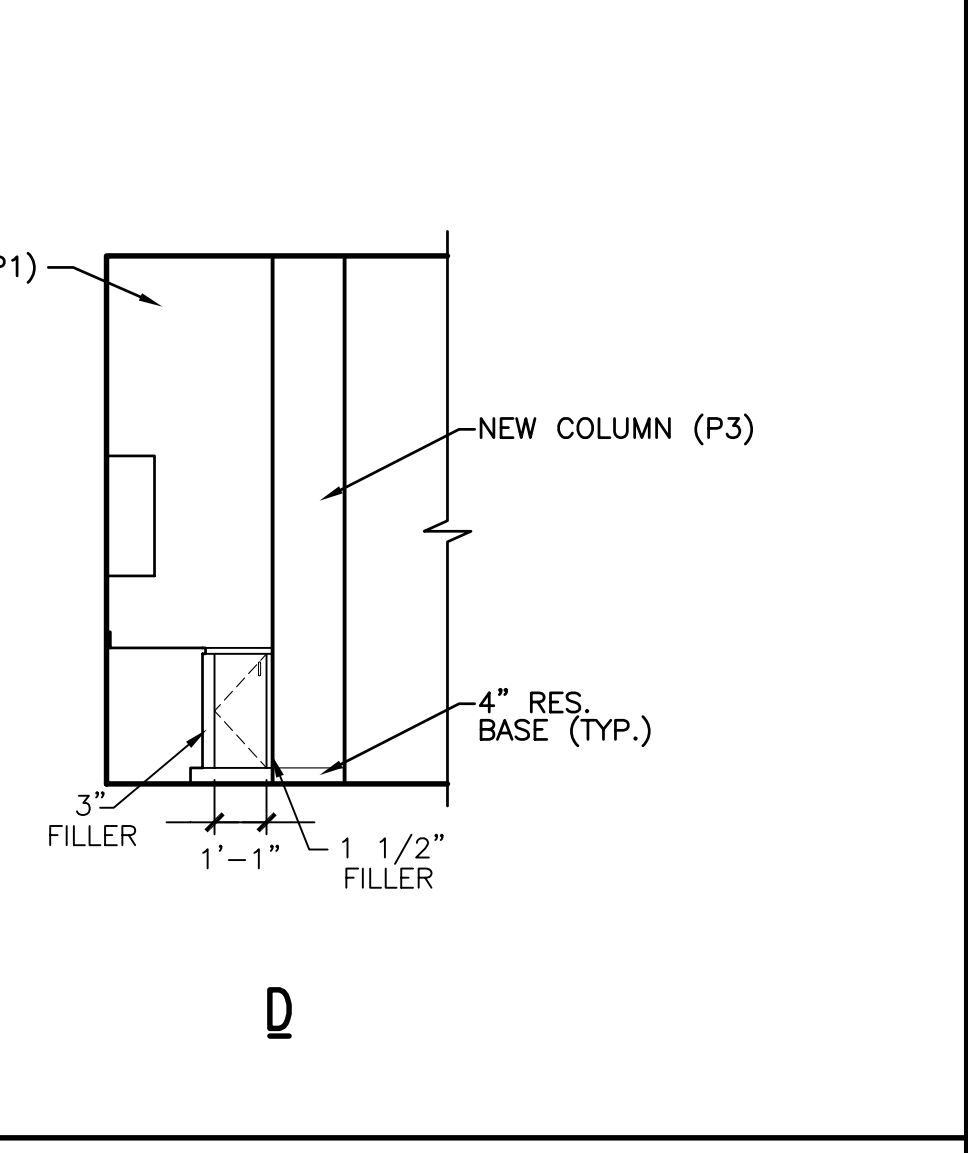
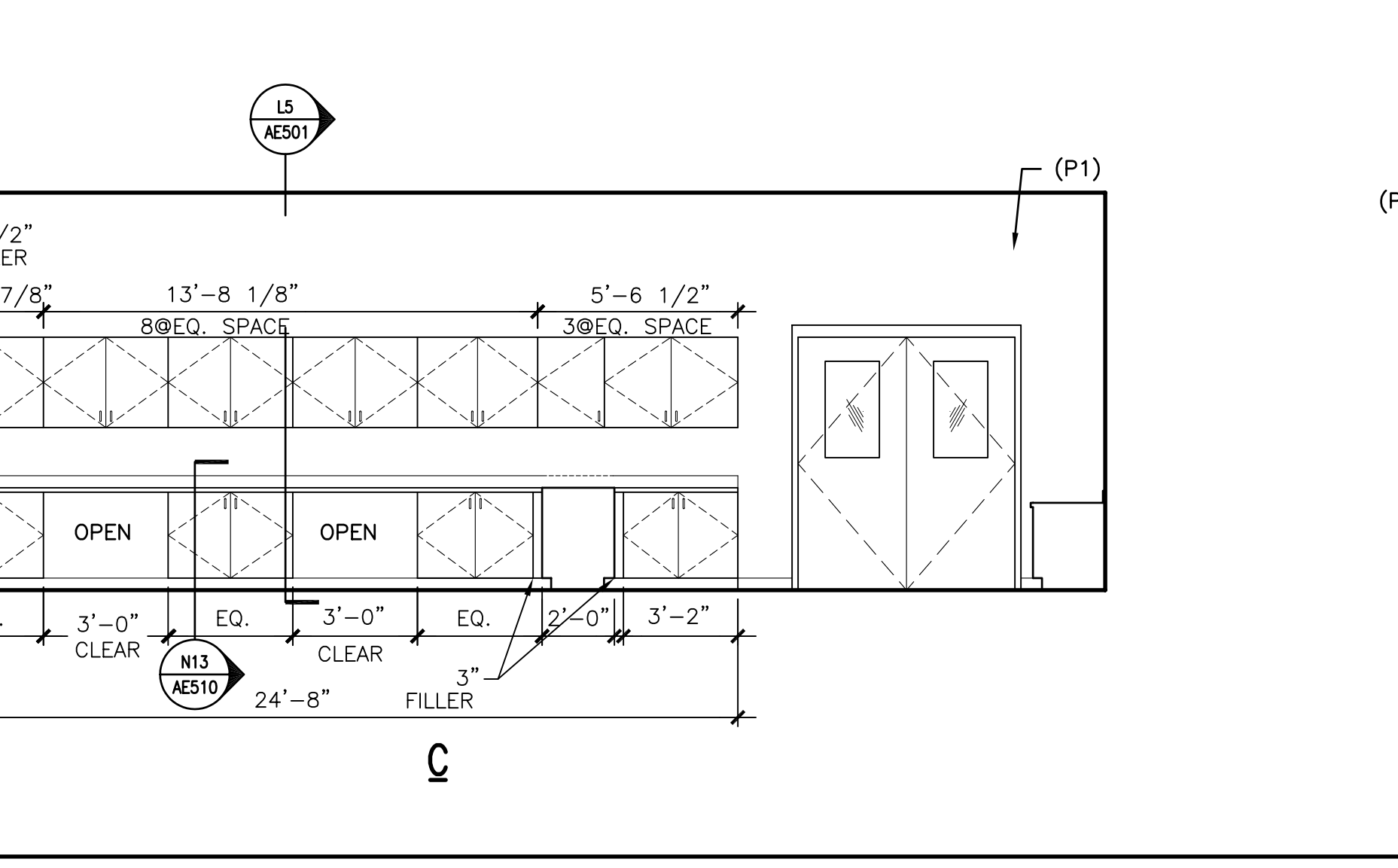
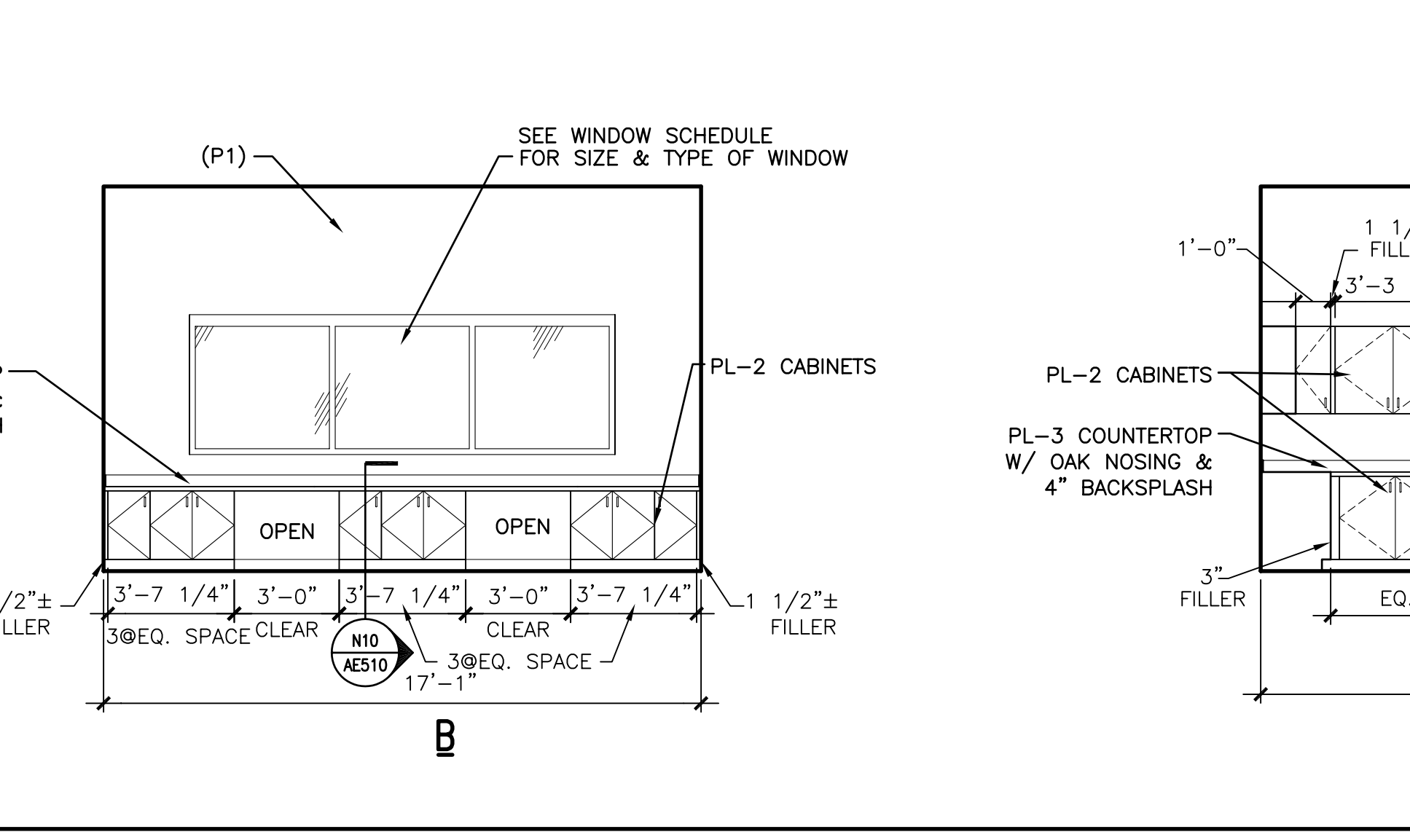
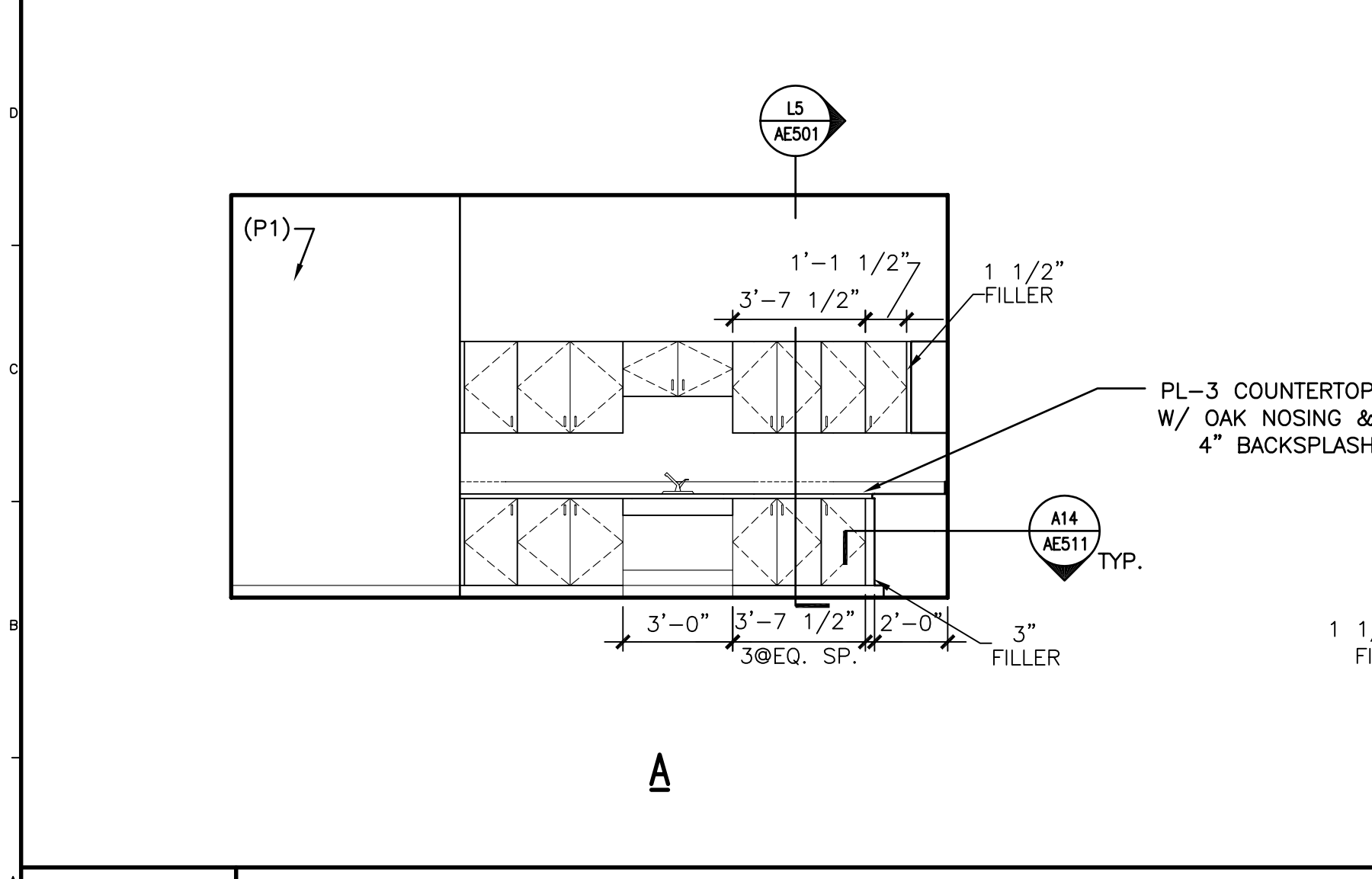
NOTE:
 ACCESS DOORS ON OPPOSITE SIDE.



P9: ELEVATOR ENTRANCEWAY & FRAMES (2ND-7TH FLOORS)- TBD
 BASE @P1: JOHNSONITE #129 SILK
 BASE @P3: ROPPE #P190 GARNET
 BASE @P5: ROPPE #P118 PEACOCK
 BASE @WALL PROTECTION: ROPPE #P190 GARNET

E1 INTERIOR ELEVATIONS @RM. #614
 1/4"=1'-0" AE120

ISSUED FOR CONSTRUCTION 3-17-03



ARCHITECTURE ENGINEERING PLANNING
 SMRT
 144 Fore Street/P.O. Box 618
 Portland, Maine 04104
 tel. (207) 772-3846
 fax. (207) 772-1070

**GLICKMAN LIBRARY
 UNIVERSITY OF SOUTHERN MAINE
 PORTLAND, MAINE**

PROJECT:
**INTERIOR ELEVATIONS -
 ALTERNATES #1 & #5**

SHEET TITLE:
 SCALE: 1/4"=1'-0" DATE: 3-17-03
 PROJECT MANAGER: SLB GRAPHIC SCALE: 0" 1"
 JOB CAP/DRAWN: CTB
 A/E OF RECORD: JLH SHEET No.
 SMRT CAD FILE: AE210-99092
 PROJECT No. 99092 **AE210**

A1 INTERIOR ELEVATIONS @RM. #621
 1/4"=1'-0" AE120