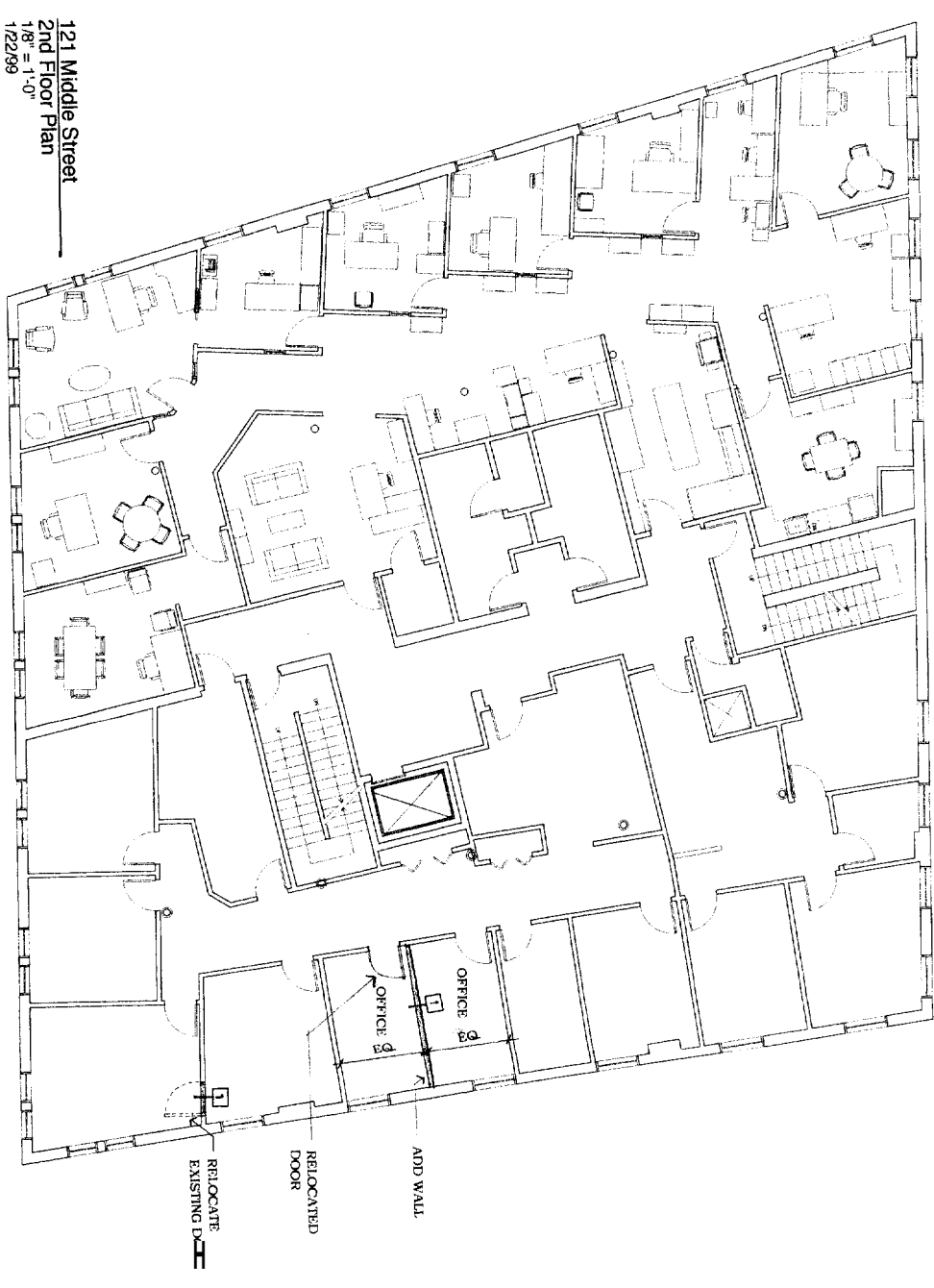


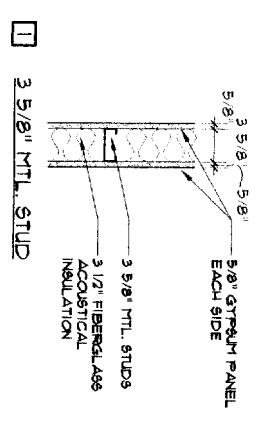
28 J4 C05



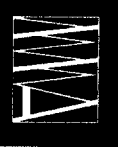
121 Middle Street
 2nd Floor Plan
 1/8" = 1'-0"
 1/22/99

LEGEND

	EXISTING WALL TO REMAIN
	EXISTING WALL TO BE REMOVED
	PROPOSED NEW WALL



WALL DETAIL
 SCALE: 1/8" = 1'-0"



**M A R K
 M U E L L E R
 A R C H I T E C T S**

A.I.A.
 100 Commercial Street
 Suite 205
 Portland, Maine 04101
 Phone/Fax 207.774.3957
 Email MMAArch@pm.net

© Copyright
 MARK MUELLER ARCHITECTS

121 MIDDLE STREET
 121 MIDDLE STREET
 PORTLAND, MAINE

2nd FLOOR PLAN

NO.	REVISIONS	DATE

DRAWN BY: M.M.
 CHECKED BY: M.M.
 PROJECT: 121 MIDDLE STREET
 DATE: AUGUST 11, 2004

