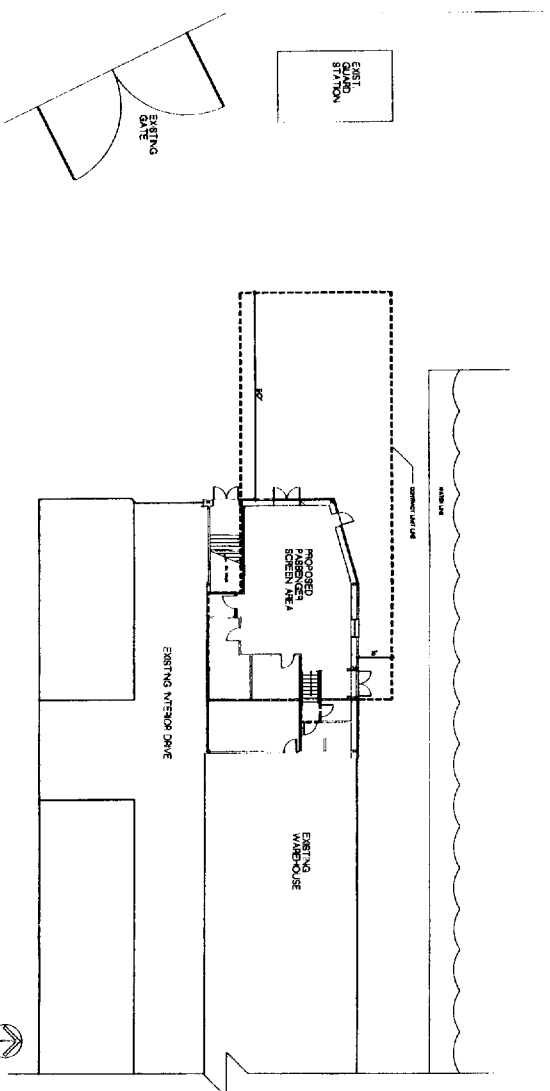


INTERIOR RENOVATIONS FOR PASSENGER SECURITY SCREENING AREA AT OCEAN TERMINAL-BID# 705

CITY OF PORTLAND, MAINE
DEPARTMENT OF PORTS AND
TRANSPORTATION WATERFRONT
DEPARTMENT



CONTRACT LIMIT LINE N.T.S.

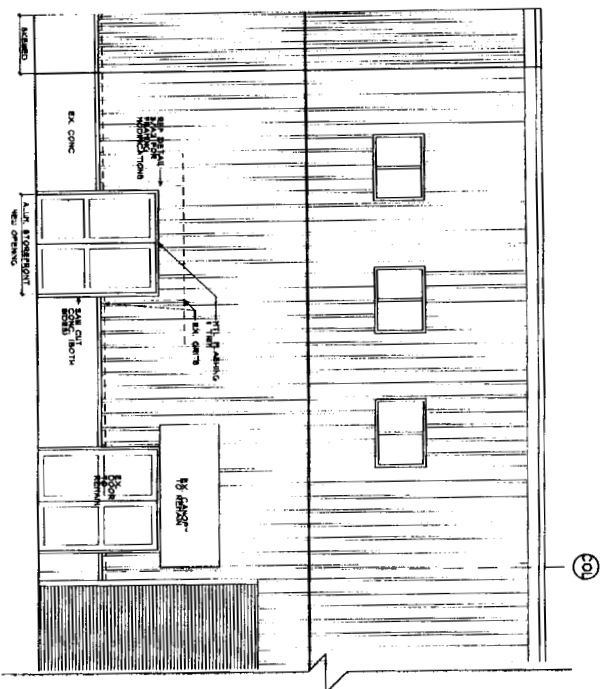
DRAWING LIST	
Cover Sheet and Contract Limit Line	
ARCHITECTURAL DRAWINGS	
A1	First Floor Detailed Plan and First Floor Plan and
A2	Second Floor Detailed Plan and Second Floor Plan and
A3	Third Floor Detailed Plan and Third Floor Plan and
A4	Fourth Floor Detailed Plan and Fourth Floor Plan and
MECHANICAL DRAWINGS	
M10	Mechanical Detailed Plan and Mechanical Plan
ELECTRICAL DRAWINGS	
E01	Electrical Detailed Plan and Lighting Plan and Power Plan

444 A 003

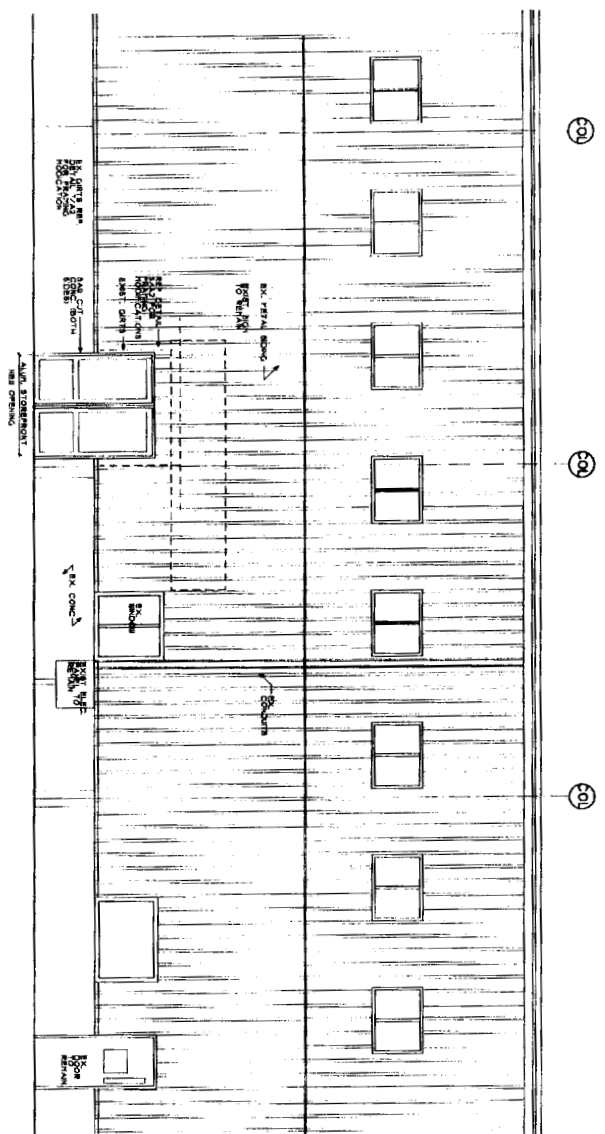
27

ARCHITECT
STEPHEN BLATT ARCHITECTS
STRUCTURAL ENGINEER
PINKHAM & GREER
MECHANICAL ENGINEER
BENNETT ENGINEERING
ELECTRICAL ENGINEER
BENNETT ENGINEERING

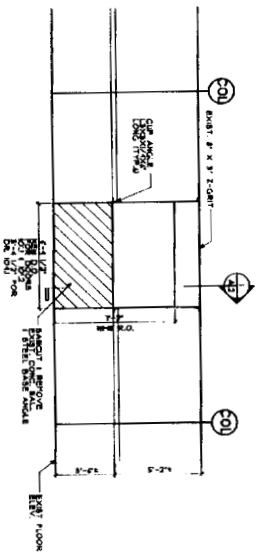
**ISSUE FOR BID
JULY 26, 2004**



1 PARTIAL NORTH ELEVATION
SCALE 1/8" = 1'-0"

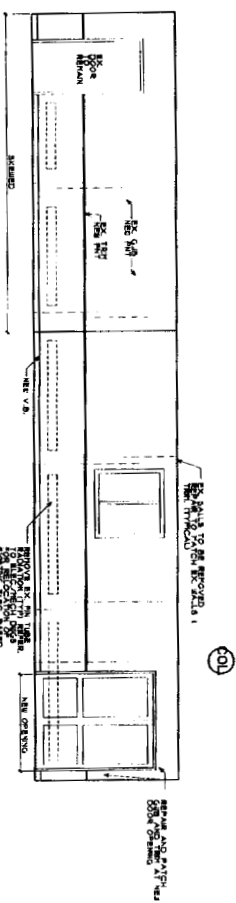


2 PARTIAL EAST ELEVATION
SCALE 1/8" = 1'-0"

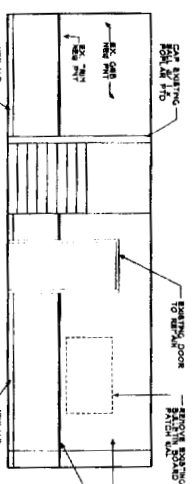


3 FRAMING ELEVATION
SCALE 1/8" = 1'-0"

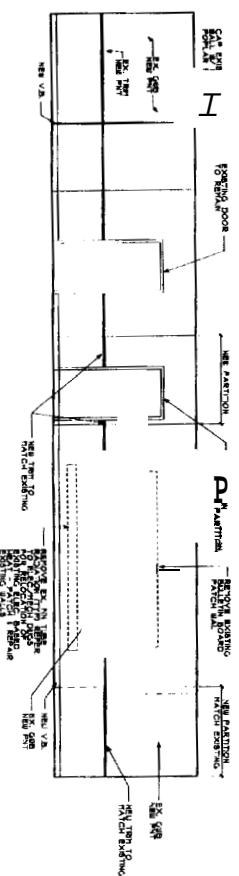
1. NEW MATERIAL PERIODS 04, 08
2. REMOVE EXIST. EXTERIOR FINISHES ON CURBSIDE
3. REMOVE EXIST. EXTERIOR FINISHES ON INTERIOR
4. CLEAN UP AND PATCH
5. PATCH PERIODS 04, 08
6. PATCH PERIODS 04, 08



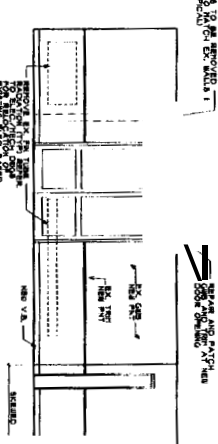
4 SCREENING ROOM
SCALE 1/8" = 1'-0"



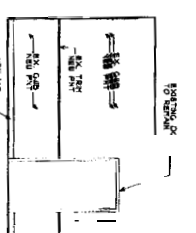
5 SCREENING ROOM
SCALE 1/8" = 1'-0"



6 SCREENING ROOM
SCALE 1/8" = 1'-0"



7 SCREENING ROOM
SCALE 1/8" = 1'-0"



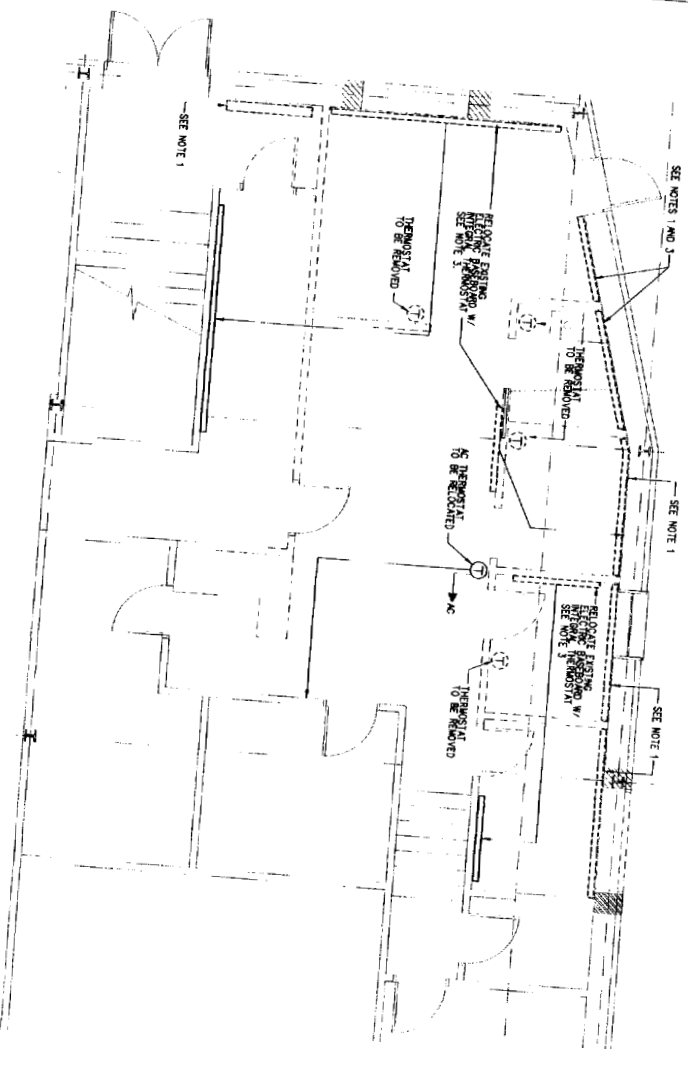
8 SCREENING ROOM
SCALE 1/8" = 1'-0"

Bid Number 705	Interior Renovations for Passenger Security Screening Area at the Portland Ocean Terminal - Bid # 705	Date: 04/03 Drawn by: JLD Checked by: DBM	Project No. 2017000001 Project Name PORTLAND OCEAN TERMINAL 2017000001 2017000001		Consultant: Structural Engineer Structural Engineer Structural Engineer Structural Engineer Structural Engineer
--------------------------	---	--	--	--	--

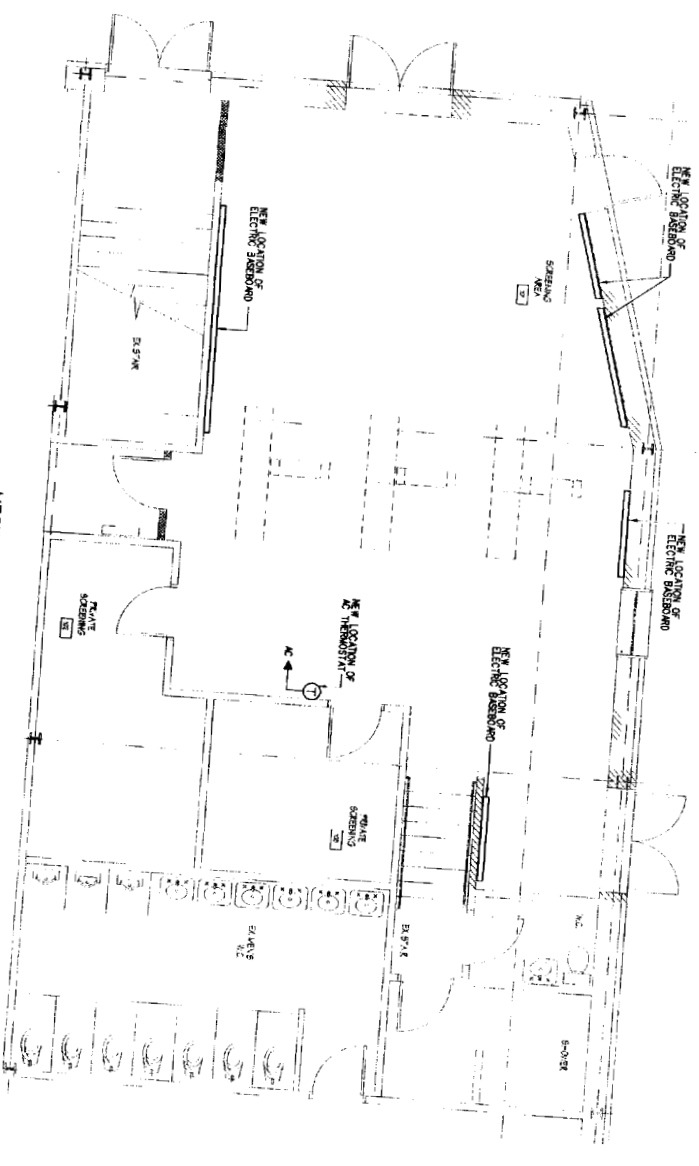
A-2

444 A 003

27



MECHANICAL DEMOLITION PLAN
SCALE: 1/8" = 1'-0"



MECHANICAL PLAN
SCALE: 1/8" = 1'-0"

- NOTES:
1. REMOVE EXISTING EXTERIOR AIR CONDITIONING UNITS AND RELOCATE TO NEW LOCATION AND DEMOLISH.
 2. EXISTING DEFUSERS SHALL REMAIN.
 3. ELECTRIC BASKETS TO BE 4" ABOVE FLOOR LEVEL, TYPICAL.

	<p>10. Detailed Scope Project No. 2017-001 2017-001 2017-001</p>	<p>Consultants Mechanical Engineer Structural Engineer Electrical Engineer Plumbing Engineer Fire Protection Engineer</p>	<p>BID NUMBER: 705</p>	<p>Interior Renovations for Passenger Security Screening Area at the Portland Ocean Terminal - Bid # 705</p>	<p>Scale: 1/8" = 1'-0" Date: 7/28/14 Drawn by: SPOLLEY Checked by: SPOLLEY</p> <p>MECHANICAL PLANS</p>
<p>M1.0</p>					

