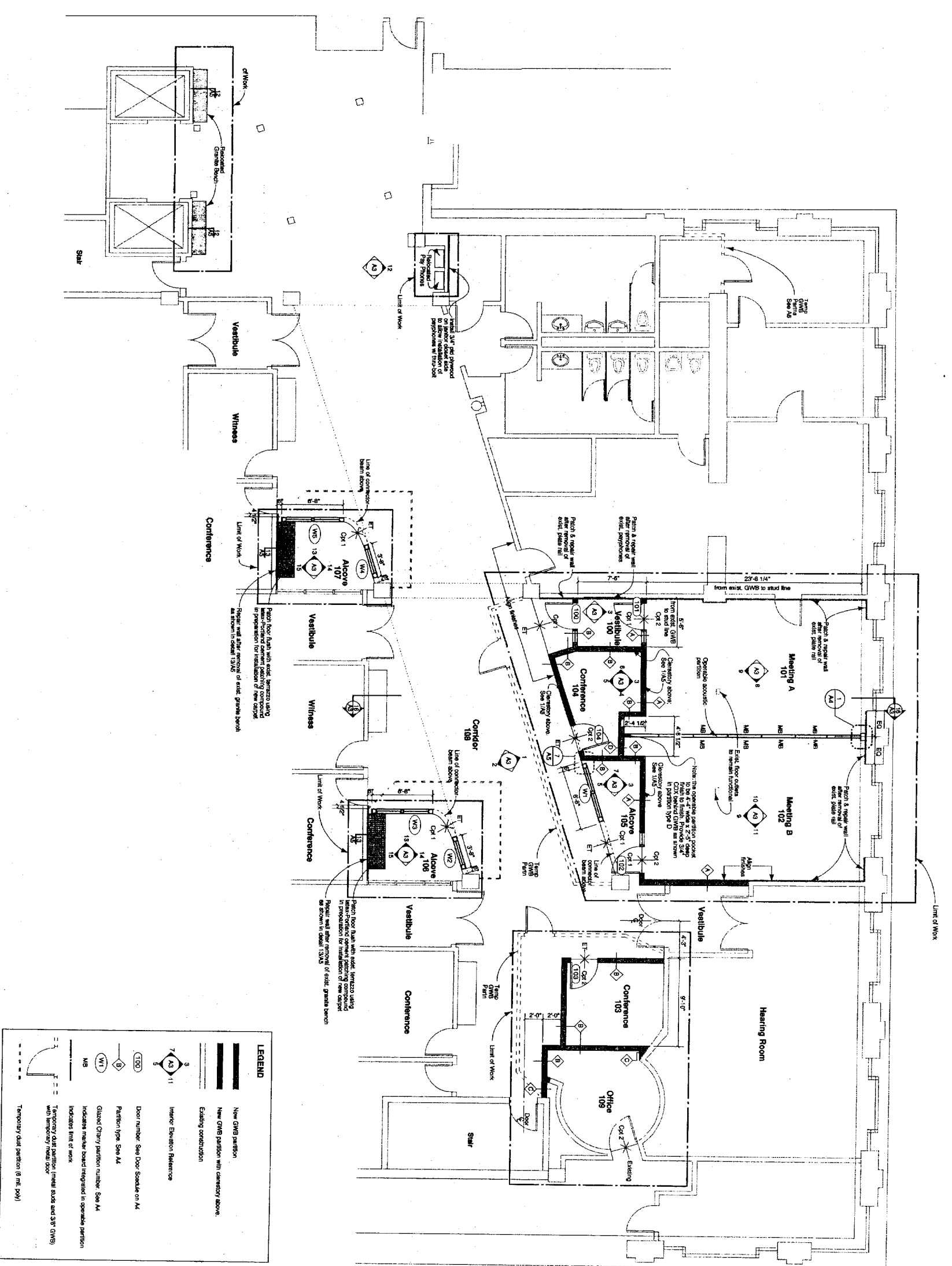


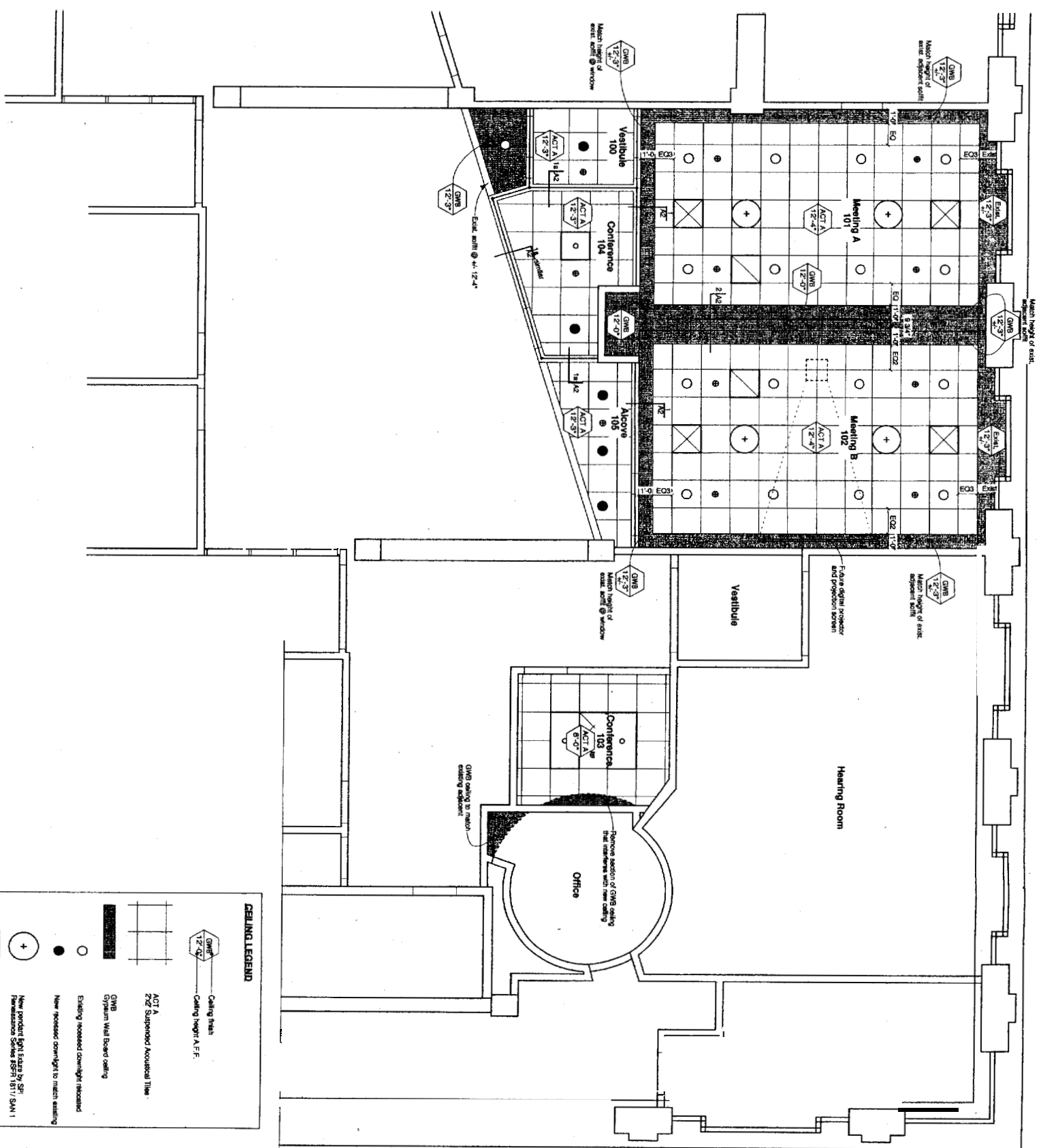
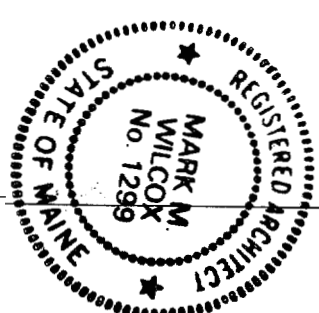
**Conference Rooms
Renovation**

**Cumberland County
Courthouse**
Portland, Maine

Architect:
Winton Scott Architects
Portland, ME

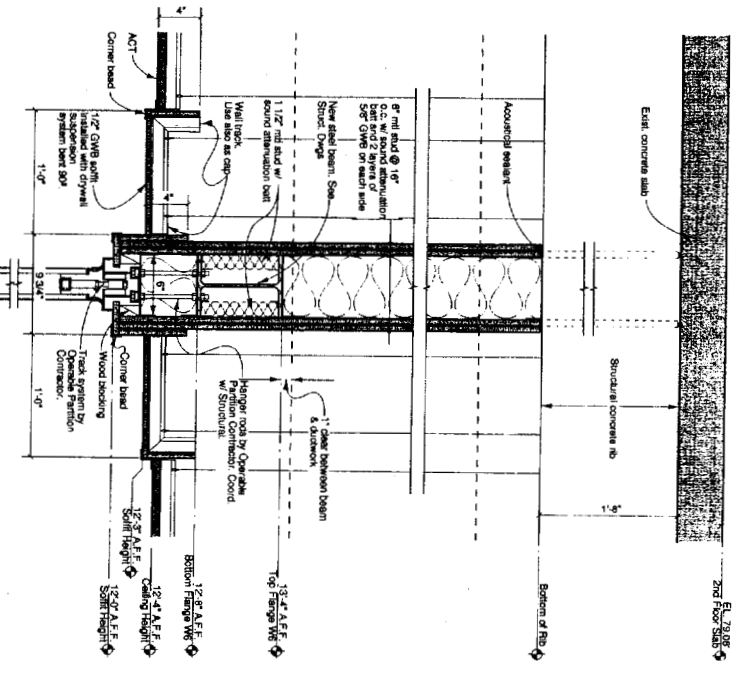
Mechanical, Electrical/Structural
Engineering:
Allied Engineering
Westbrook, ME



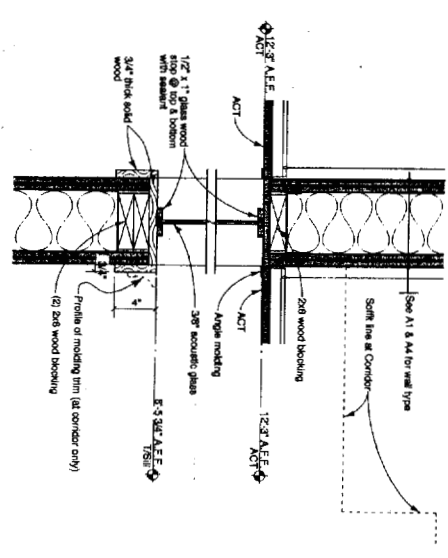


CEILING LEGEND

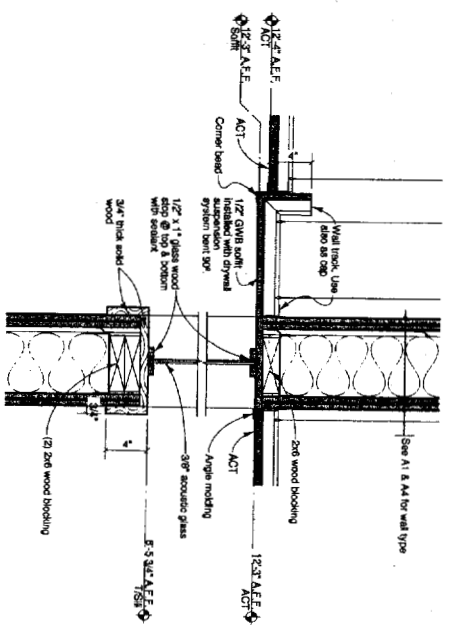
	Ceiling finish
	Ceiling height A.F.F.
	ACT A 2'x2' Suspended Acoustical Tile
	GMB Gypsum Wall Board ceiling
	Existing recessed downlight recessed
	New recessed downlight to match existing
	New pendant light fixture by SF Pendant Series SFPH 1811/SAN 1
	2' x 2' recessed pendant fixture
	2' x 2' recessed pendant fixture
	Supply air diffuser grille
	Return air grille
	Sprinkler head



2 DETAIL @ OPERABLE PARTITION TRACK
1 1/2" = 1'-0"



1B DETAIL @ CLEARESTORY
1 1/2" = 1'-0"



1A DETAIL @ CORNER BEAD
1 1/2" = 1'-0"

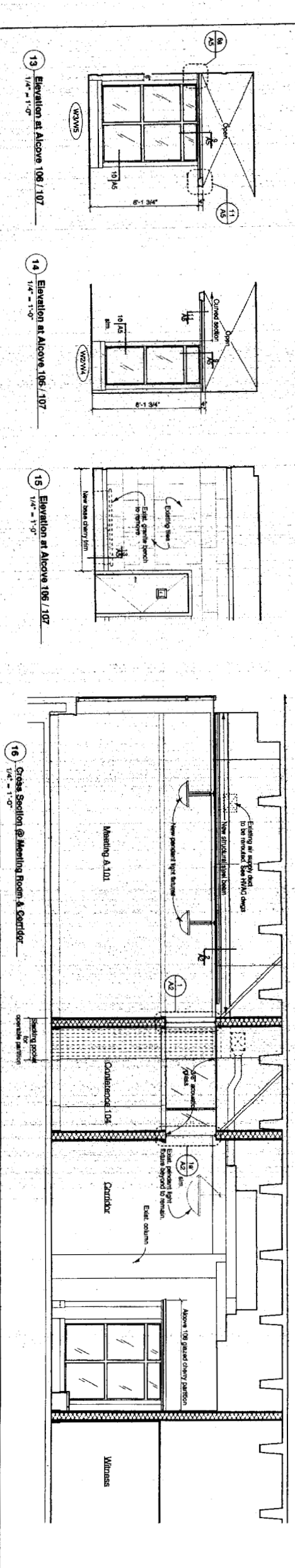
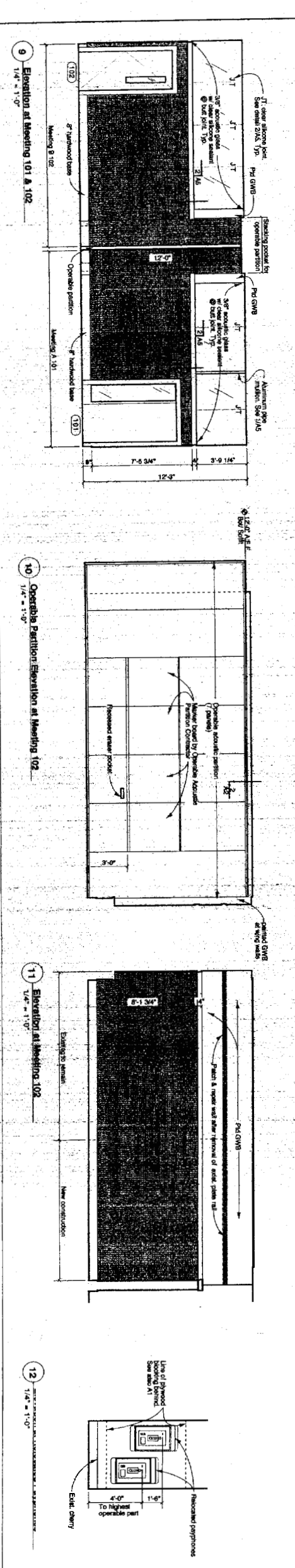
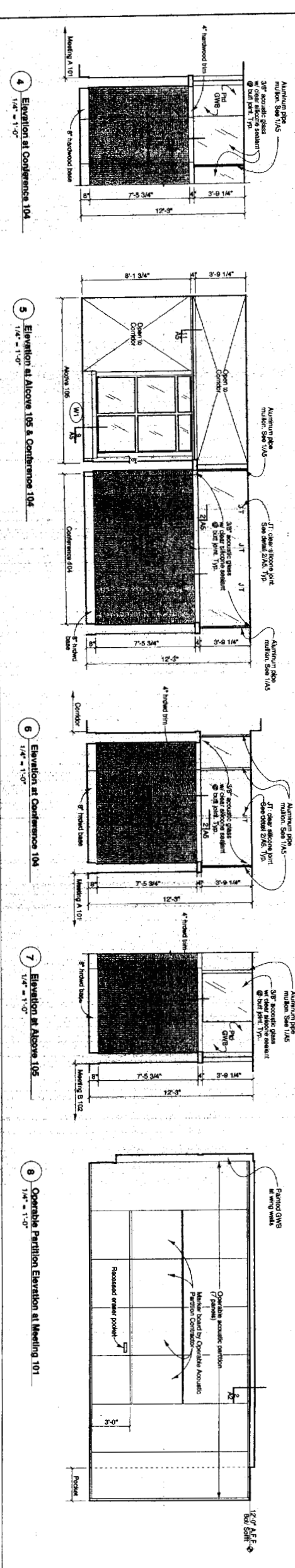
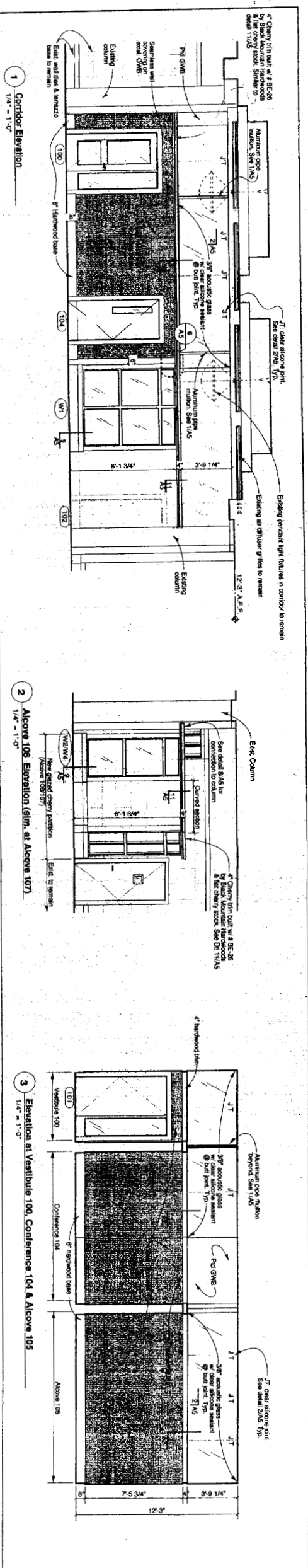
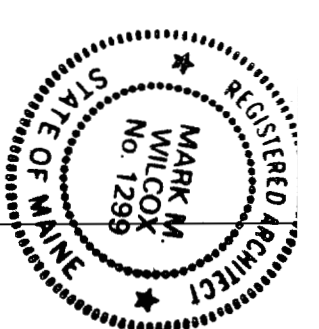
Cumberland County Courthouse
Portland, Maine

Architect:
Winton Scott Architects
Portland, ME

Mechanical / Electrical / Structural
Allied Engineering
Westbrook, ME

Conference Rooms Renovation

A2
Reflected Ceiling Plan



REGISTERED ARCHITECT
MARK M. WILCOX
 No. 1299
 STATE OF MAINE

Conference Rooms Renovation

Cumberland County Courthouse
 Portland, Maine

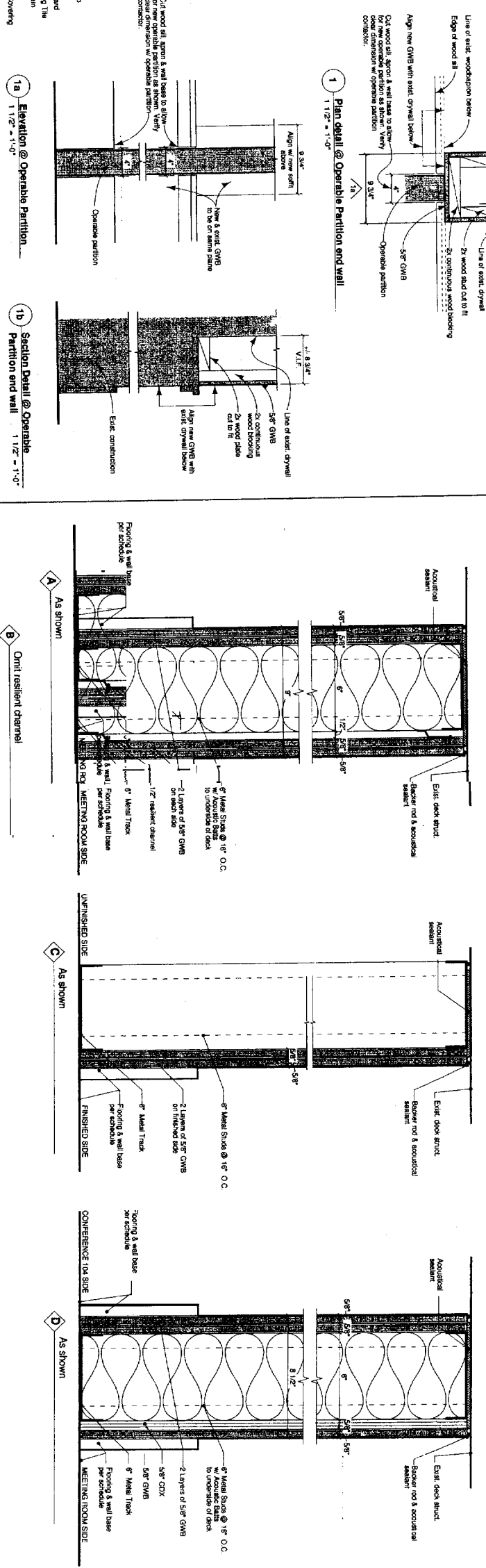
Architect:
Wilton Scott Architects
 Portland, ME

Mechanical / Electrical / Structural
Allied Engineering
 Westbrook, ME

A3
 Interior Elevations

May 7, 2004 1/4" = 1'-0"

PARTITION TYPES



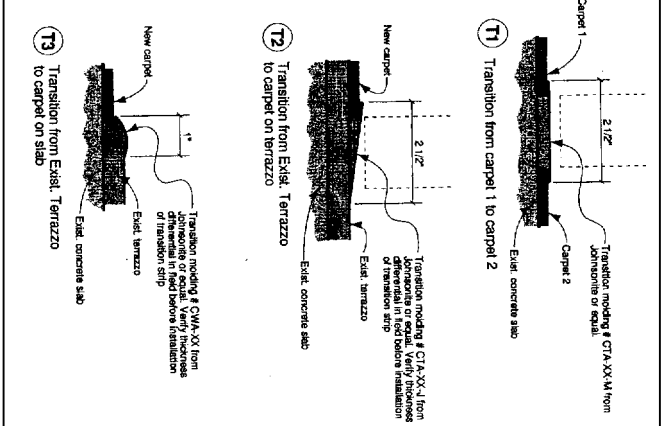
Finish Schedule

Room Name	Floor	Base	Walls	Ceiling	Chg. Ht.	Partitions
100 Vestibule	CFT 1	8" WD	SMC	GWB	12'-3"	
101 Meeting A	CFT 2	8" WD	SMC	ACT	12'-4"	
102 Meeting B	CFT 2	8" WD	SMC	ACT	12'-4"	
103 Conference	CFT 2	8" WD	SMC	ACT	8'-0"	
104 Conference	CFT 2	8" WD	SMC	ACT	12'-3"	
105 Alcove	CFT 1	12" WD	ETR	ETR	12'-3"	
106 Alcove	CFT 1	12" WD	ETR	ETR	12'-3"	
107 Alcove	CFT 1	12" WD	ETR	ETR	12'-3"	
108 Corridor	ET	ET/WD	ETR/SMC	ETR	Varies	
109 Corridor	CFT 2	8" WD	SMC	ETR/GWB	4'-2" (81/16")	

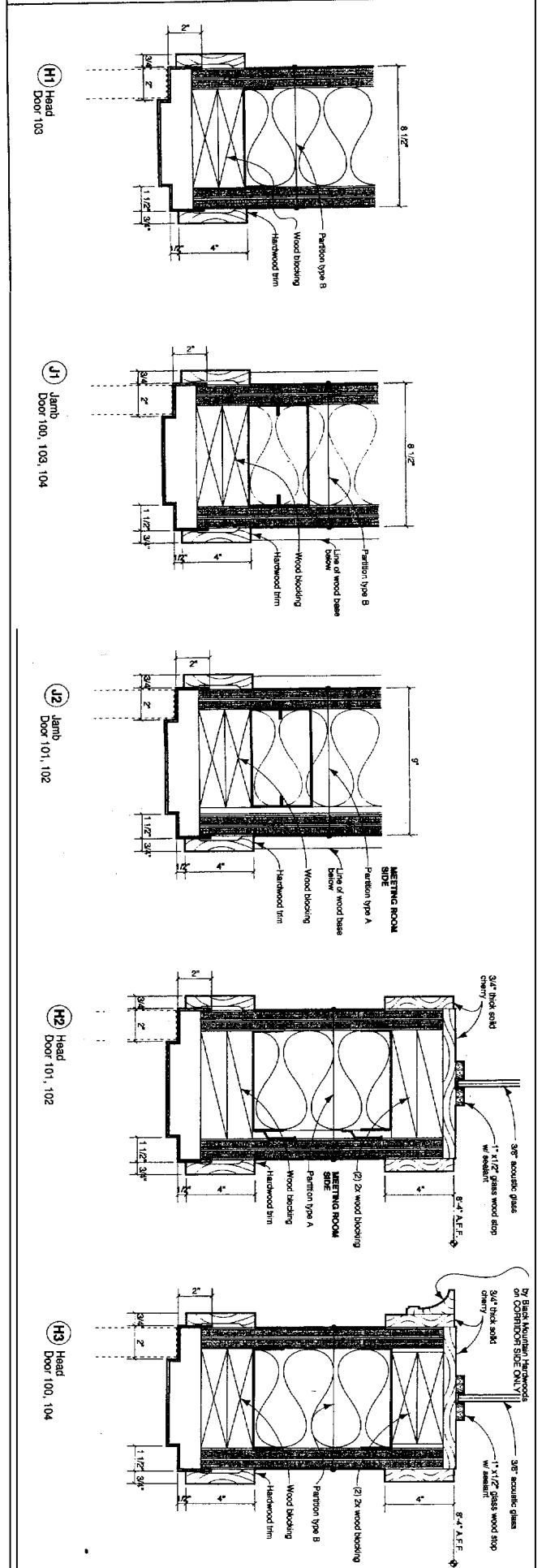
Door and Frame Schedule

General	Door No.	Size	Thickness	Material	Finish	Type	Frame	Material	Finish	Type	Head	Jamb	Threshold	Hardware	Partitions
	100	3'-0" x 7'-0"	1 3/4"	WD	NHL	A	H.M.	PH	PH	PH	H3	J1	T1	HNG	HNI
	101	3'-0" x 7'-0"	1 3/4"	WD	NHL	C	H.M.	PH	PH	PH	H2	J2	T1	HNG	HNI
	102	3'-0" x 7'-0"	1 3/4"	WD	NHL	C	H.M.	PH	PH	PH	H2	J2	T1	HNG	HNI
	103	3'-0" x 7'-0"	1 3/4"	WD	NHL	B	H.M.	PH	PH	PH	H1	J1	T2	HNG	HNI
	104	3'-0" x 7'-0"	1 3/4"	WD	NHL	B	H.M.	PH	PH	PH	H3	J1	T3	HNG	HNI

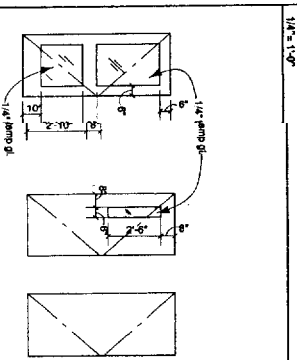
FI AND TRANSITION TYPES



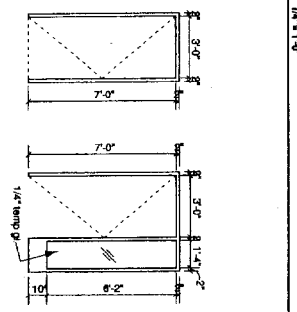
HEAD & JAMB DETAILS



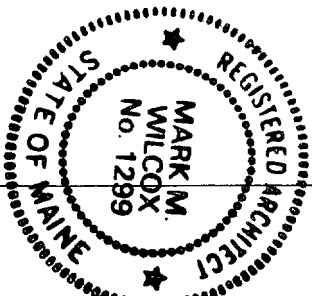
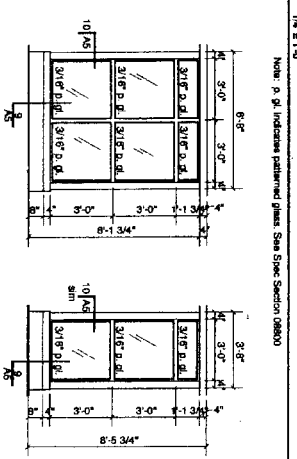
DOOR TYPES



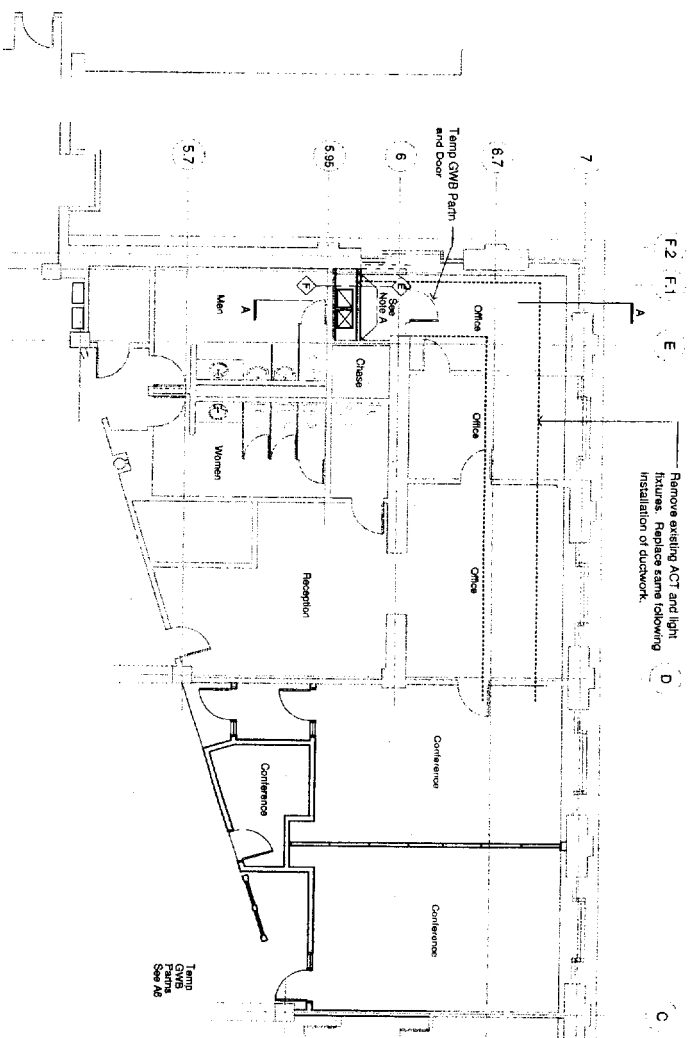
FRAME TYPES



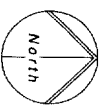
GLAZED PARTITION TYPES



Partition Types, Schedules & Details
 A4
 Architects:
Wilton Scott Architects
 Portland, ME
 Mechanical / Electrical / Structural
 Engineering:
Allied Engineering
 Westbrook, ME
 Cumberland County
 Courthouse
 Portland, Maine
 Conference Rooms
 Renovation

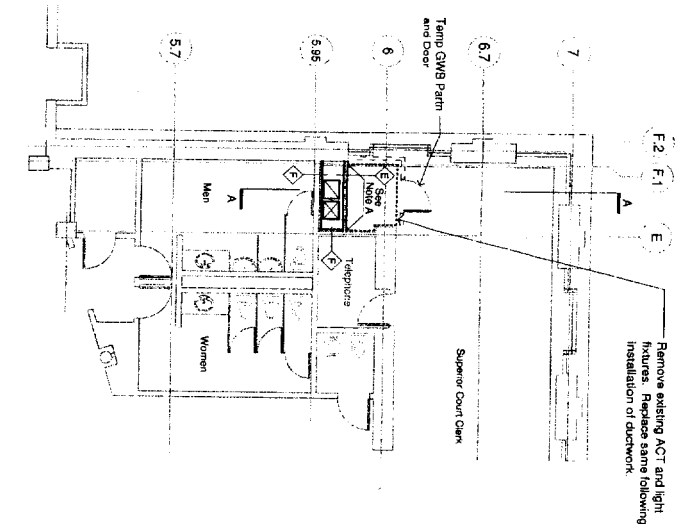


First Floor Plan
1/8" = 1'-0"

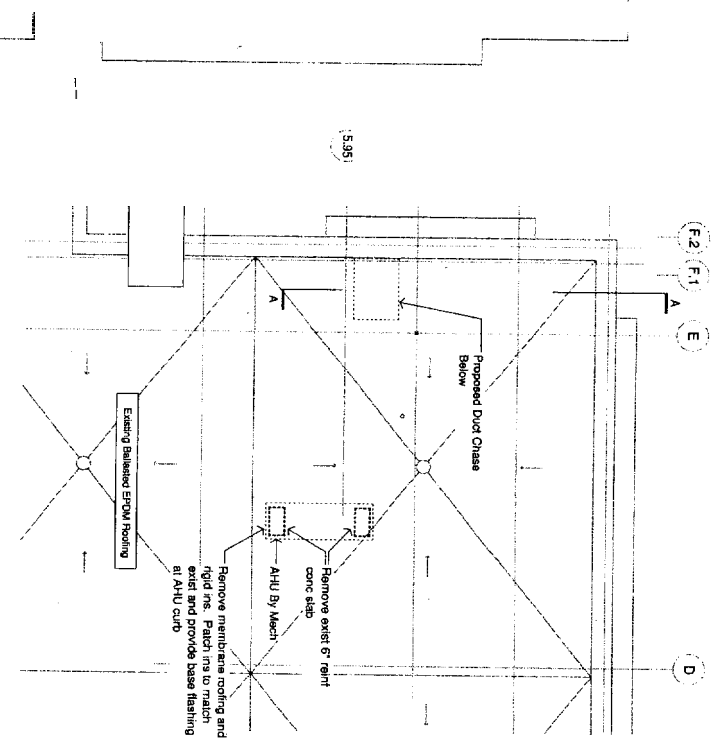
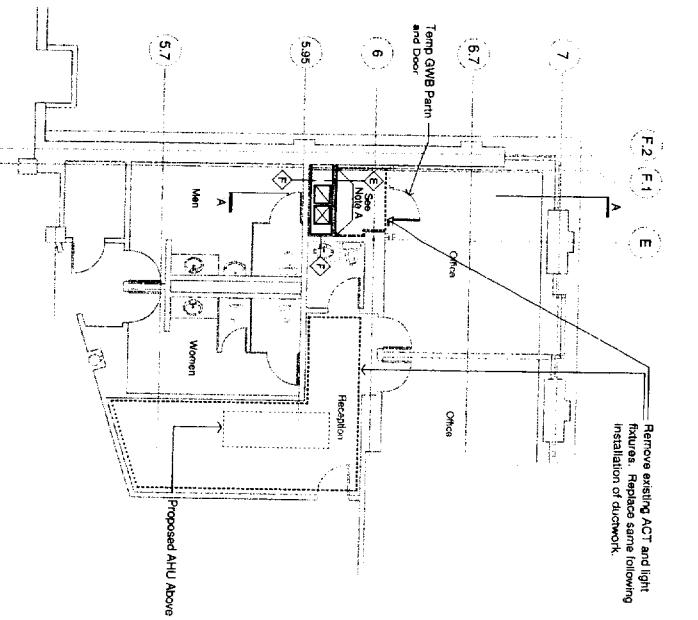


0 4 8 16

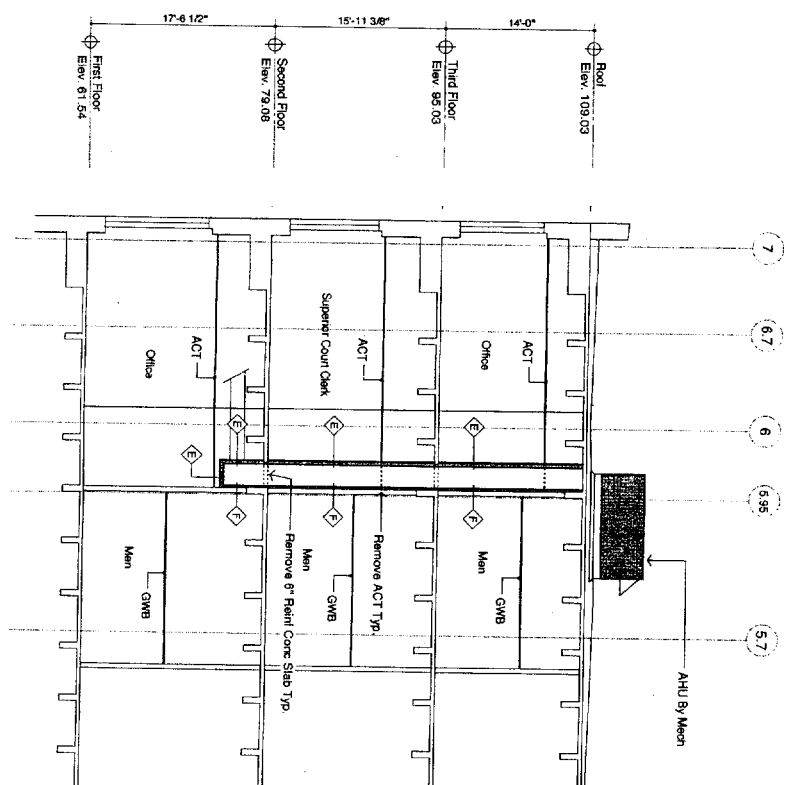
Notes
A Provides 3/4" x 8" Nail Finish Cherry Base To Match Existing Entry



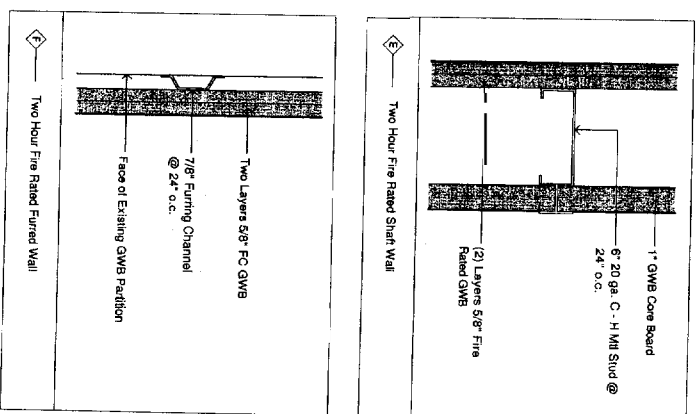
Second Floor Plan
1/8" = 1'-0"



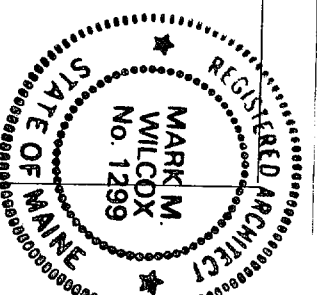
Proposed Mechanical Chases Section
1/8" = 1'-0"



Proposed Mechanical Chases Section
1/8" = 1'-0"



Duct Shaft Partition Types
3/8" = 1'-0"



Conference Rooms
Renovation

Cumberland County
Courthouse
Portland, Maine

Architect:
Wilton Scott Architects
Portland, ME

Mechanical / Electrical / Structural
Engineering:
Allied Engineering
Westbrook, ME

A6
Mechanical Chases