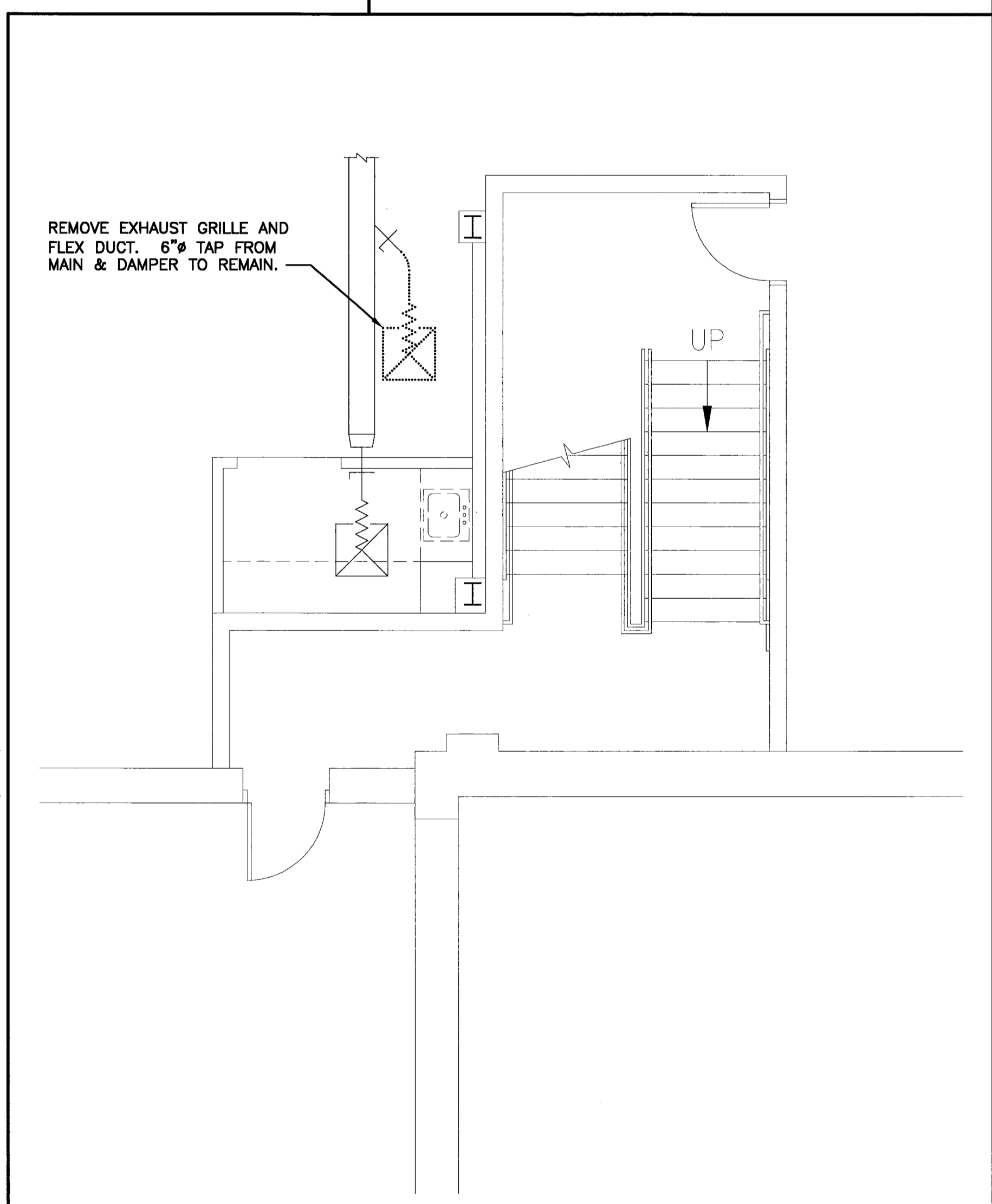
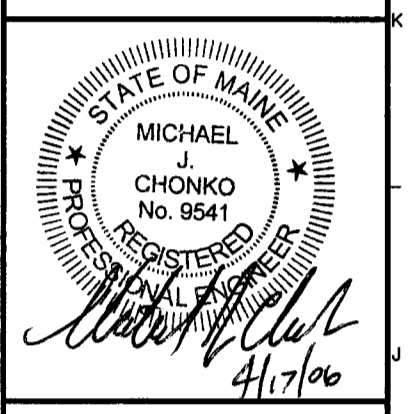


NOTE:
1. SEE SHEET M-001 FOR LEGEND AND ABBREVIATIONS.



ARCHITECTURE ENGINEERING PLANNING
SWRT
144 Fore Street/P.O. Box 618
Portland, Maine 04104
tel. (207) 772-3846
fax. (207) 772-1070



PROJECT TITLE:
**USM COMMUNITY EDUCATION CENTER
LOWER LEVEL FIT-UP**
PORTLAND, MAINE
CURRENT ISSUE STATUS:
**ISSUED FOR PRICING/PERMITTING
4-18-06**

REV	DESCRIPTION	DATE
0	ISSUED FOR PRICING/PERMITTING	4-18-06

GRAPHIC SCALE:
0" 1"
SCALE: 1/4"=1'-0"
PROJECT MANAGER: SLB
JC/DRAWN BY: TCM/CAH
A/E OF RECORD: MJC
CAD FILE: MD101-06004
PROJECT NO: 06004
DATE: 4-18-06
SHEET TITLE:

HVAC DEMOLITION PLANS

A1 BASEMENT FLOOR PLAN
1/4" = 1'-0"

A12 FIRST FLOOR PLAN
1/4" = 1'-0"

SHEET No.
MD101