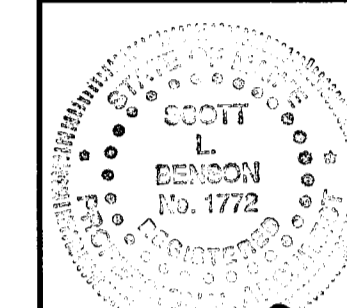


GENERAL NOTES:

1. SEE G1001 FOR PROJECT GENERAL NOTES.

**SM
R/T**

ARCHITECTURE ENGINEERING PLANNING
SMART
144 Fore Street/P.O. Box 618
Portland, Maine 04104
tel. (207) 772-3846
fax. (207) 772-1000



Scott Benson

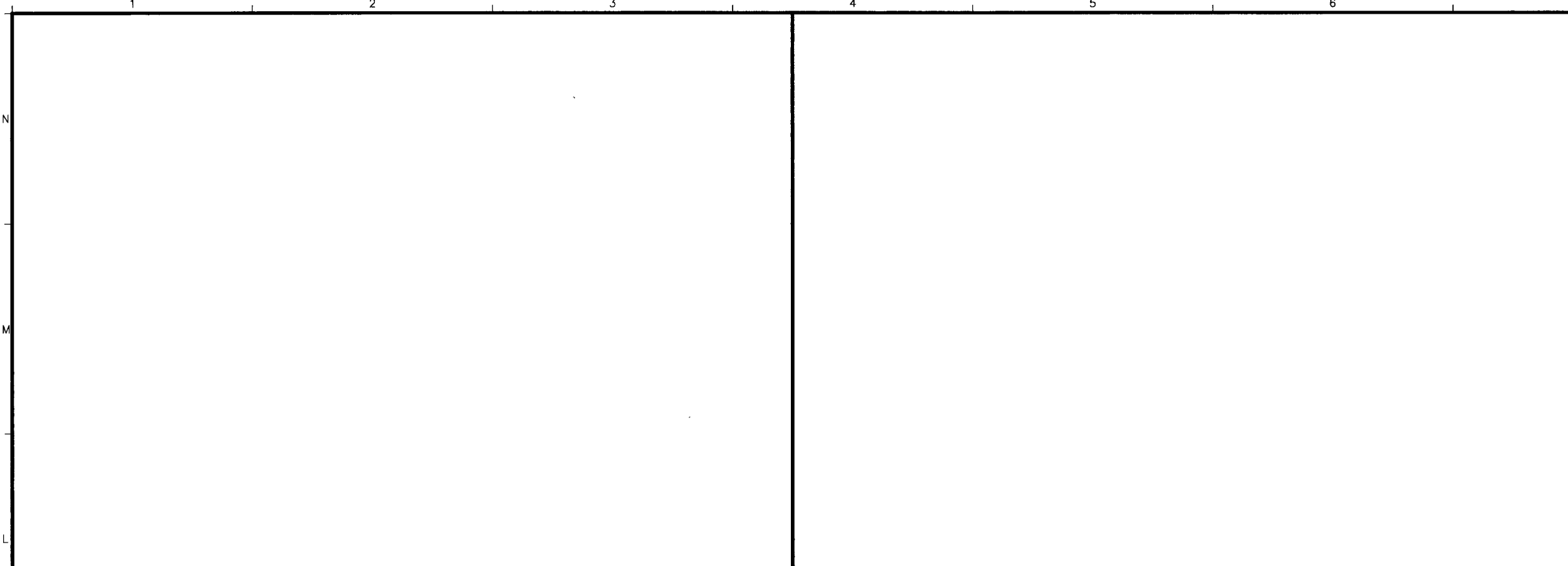
PROJECT TITLE:
**USM COMMUNITY EDUCATION CENTER
LOWER LEVEL FIT-UP**
PORTLAND, MAINE
CURRENT ISSUE STATUS:
**ISSUED FOR PRICING/PERMITTING
4-18-08**

REV	DESCRIPTION	DATE
0	ISSUED FOR PRICING/PERMITTING	4-18-08

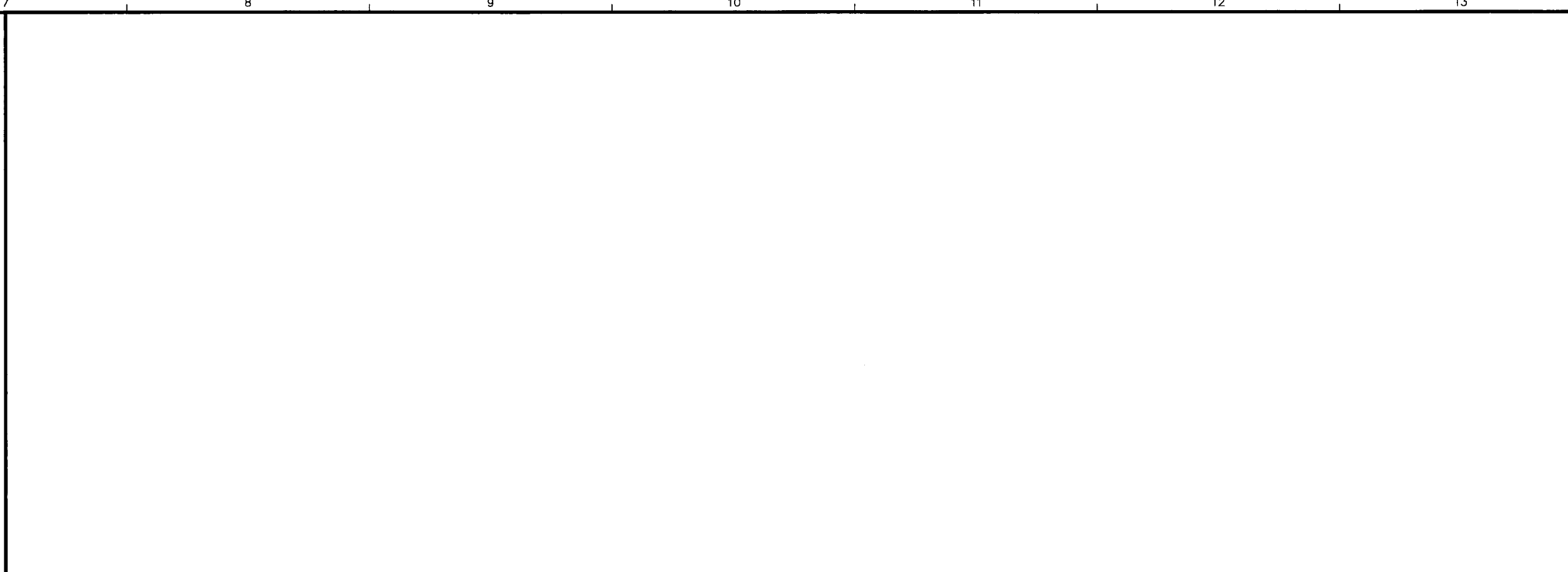
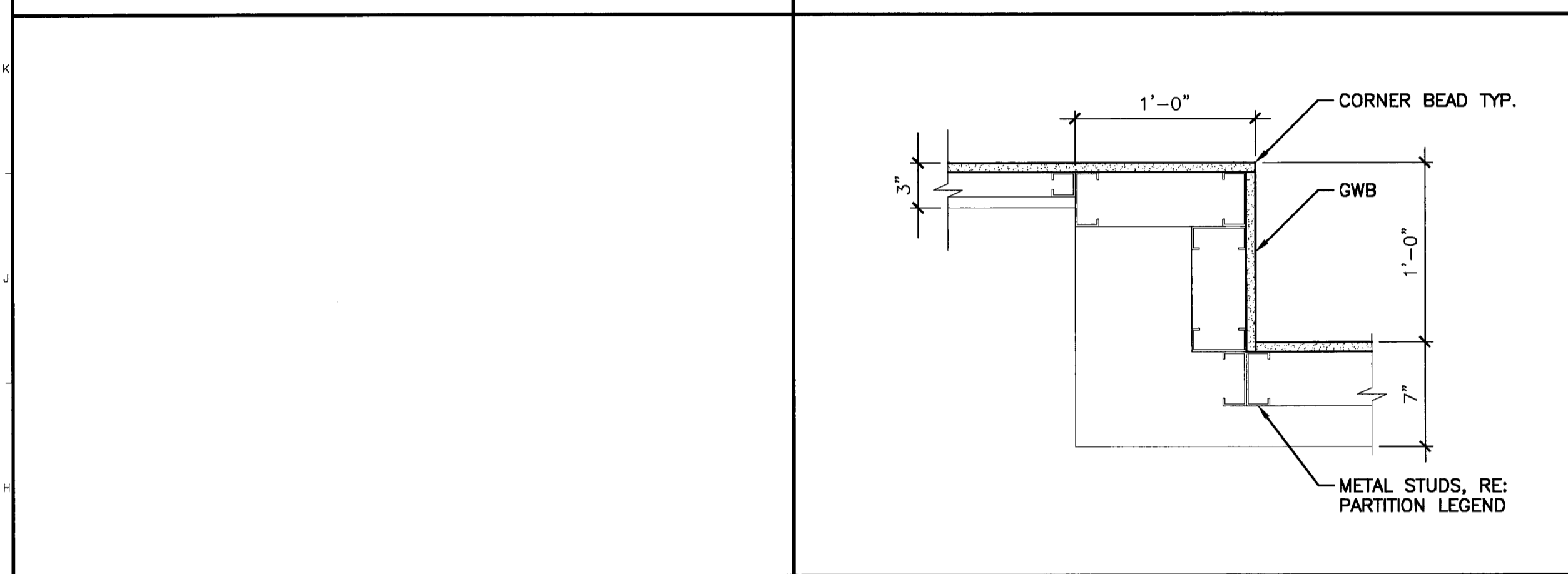
GRAPHIC SCALE:
0" 1"
SCALE: AS NOTED
PROJECT MANAGER: SLB
JC/DRAWN BY: TCM
A/E OF RECORD: SLB
CAD FILE: AE201-06004
PROJECT NO: 06004
DATE: 4-18-08
SHEET TITLE:

**INTERIOR
ELEVATIONS
& DETAILS**

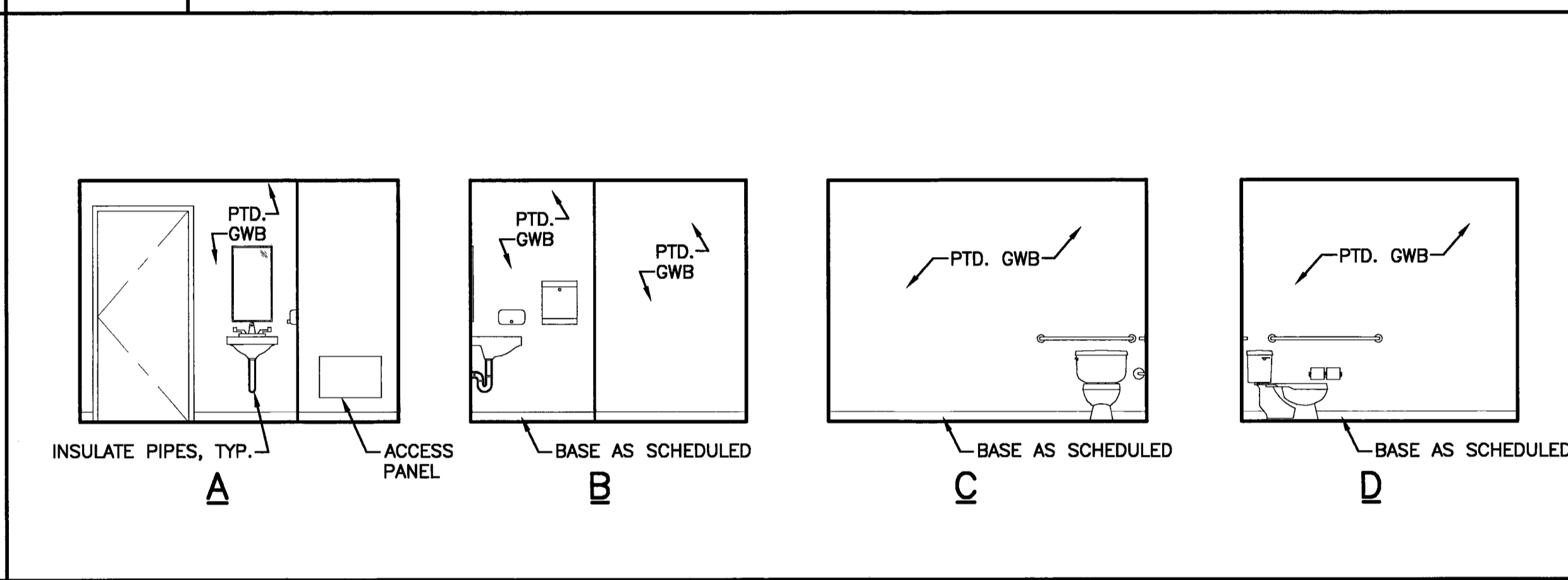
SHEET No.
AE201



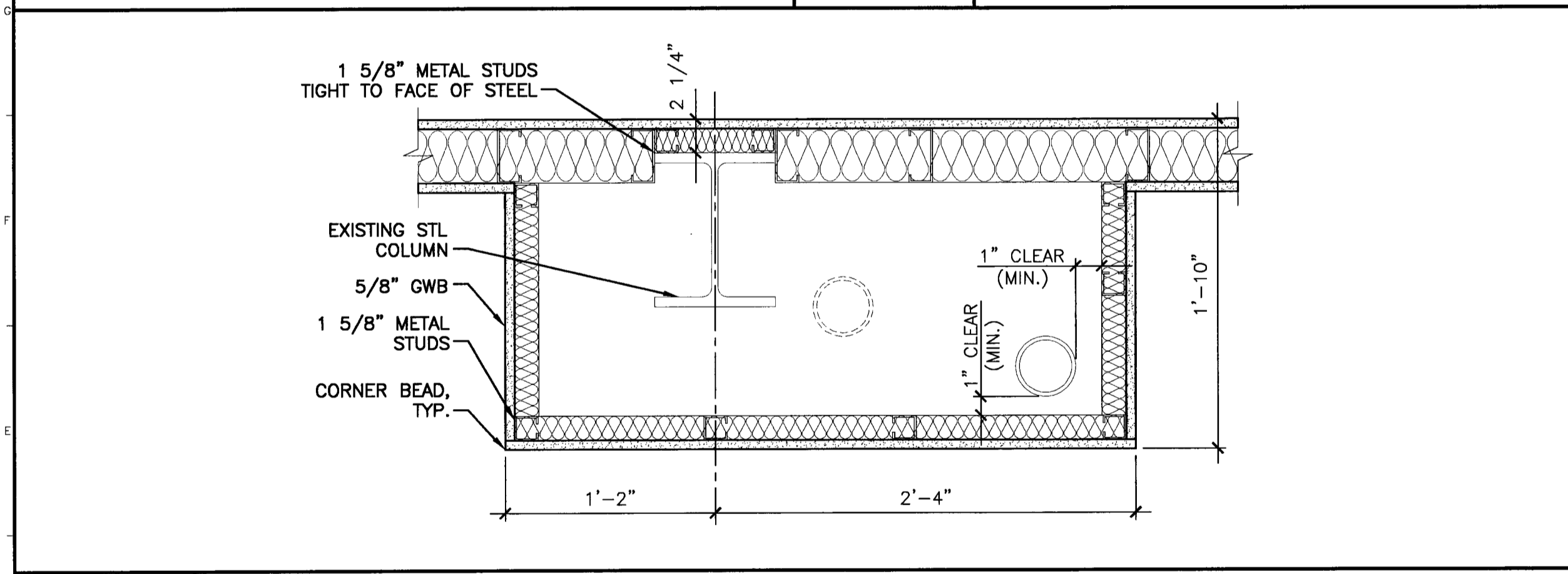
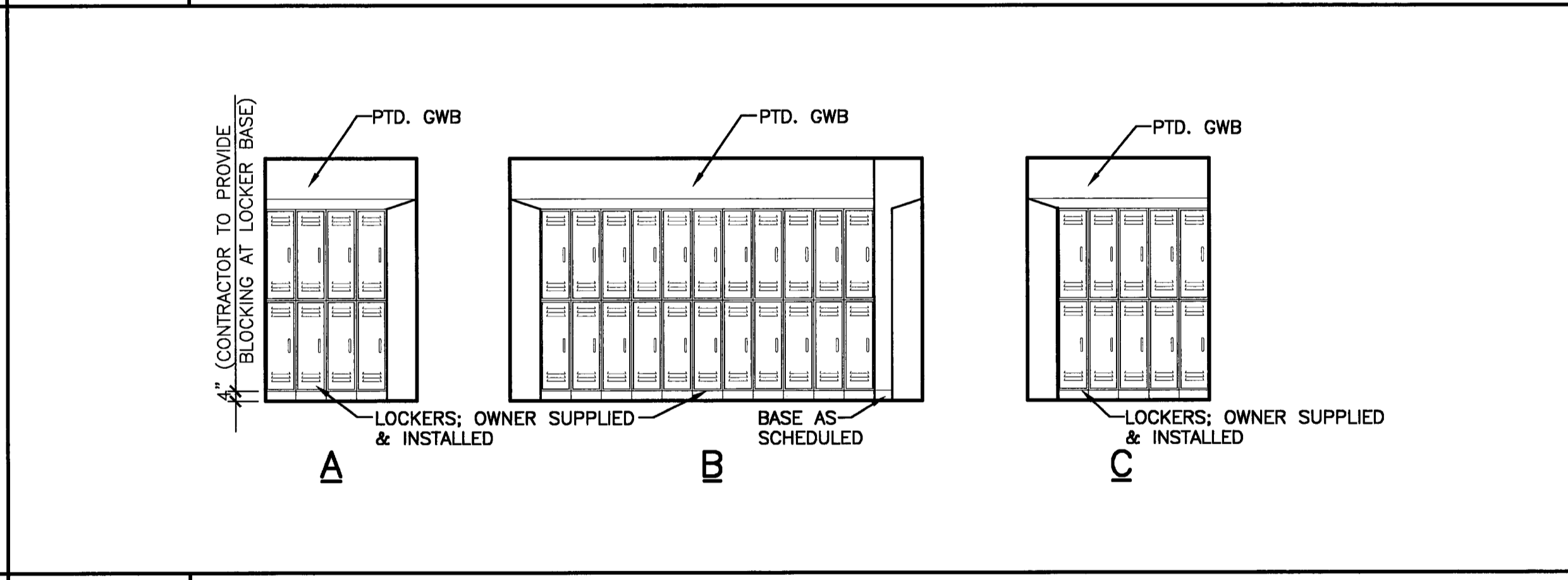
A1 PLAN DETAIL
1 1/2" = 1'-0" *



G4 PLAN DETAIL
1 1/2" = 1'-0" *

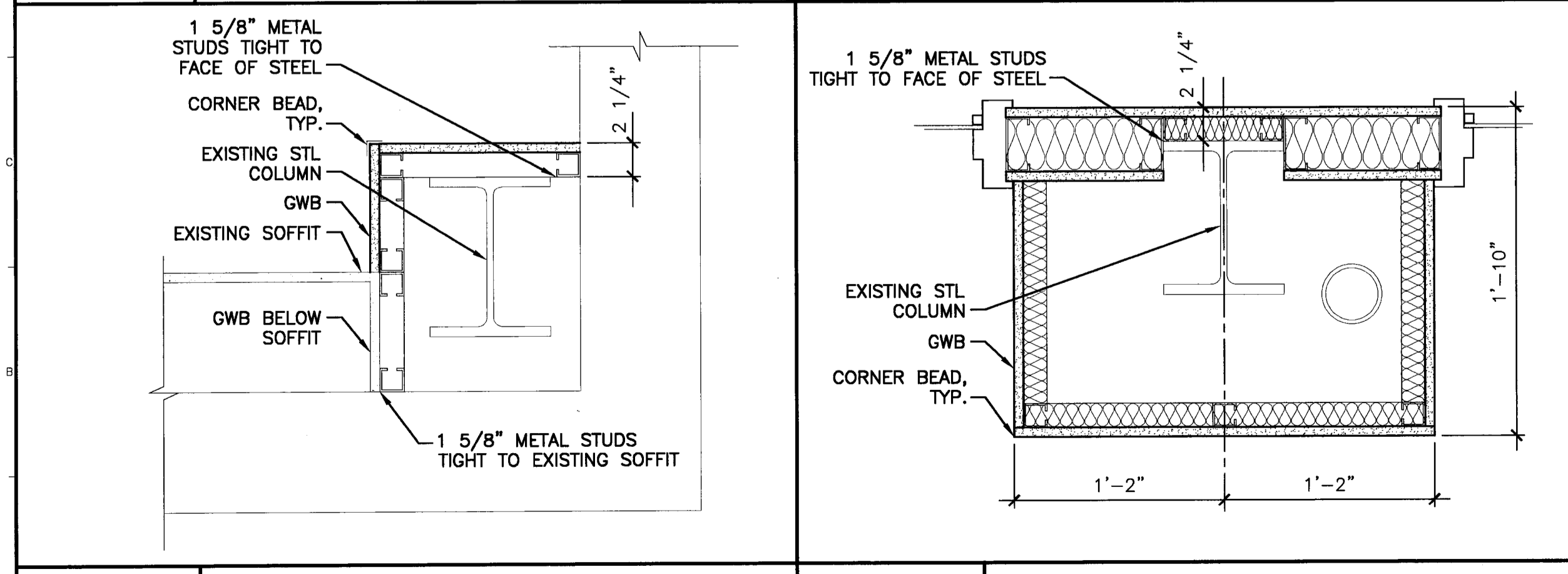
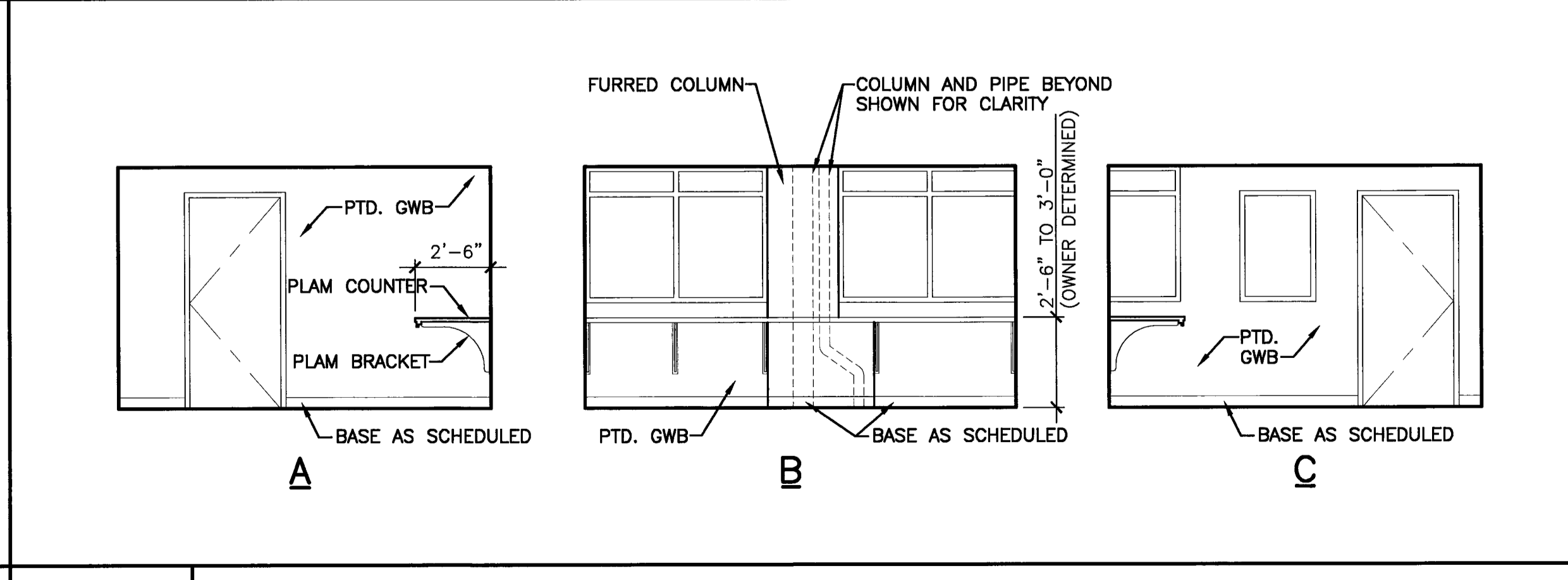


G7 INTERIOR ELEVATION - TOILET 006
1/4" = 1'-0" *



D1 PLAN DETAIL BELOW COUNTERTOP
1 1/2" = 1'-0" *

D7 INTERIOR ELEVATION - EVIDENCE/LOCKERS 010
1/4" = 1'-0" *



A4 PLAN DTL ABOVE COUNTERTOP
1 1/2" = 1'-0" *

A7 INTERIOR ELEVATION - OPEN OFFICE 008
1/4" = 1'-0" *

