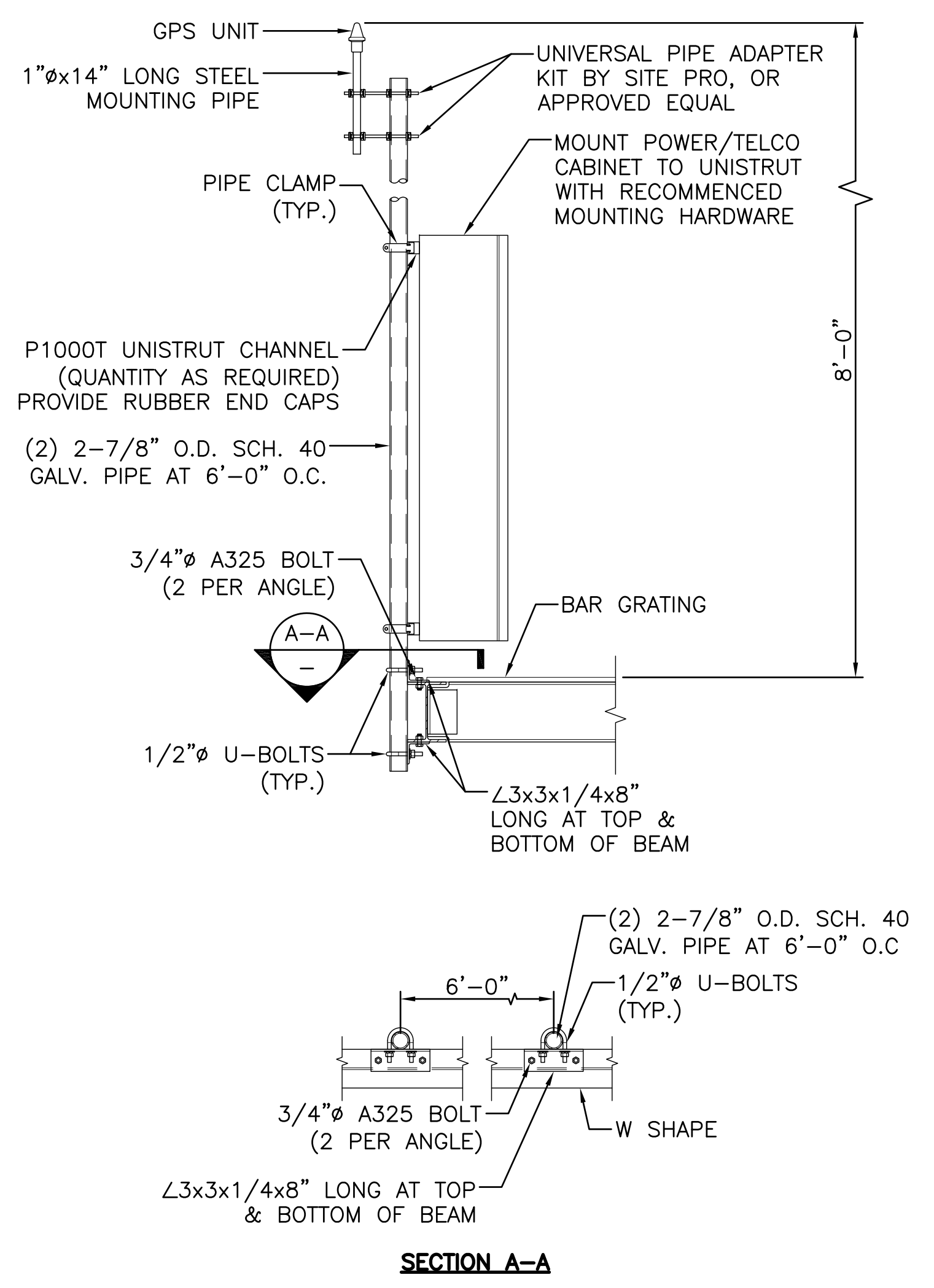
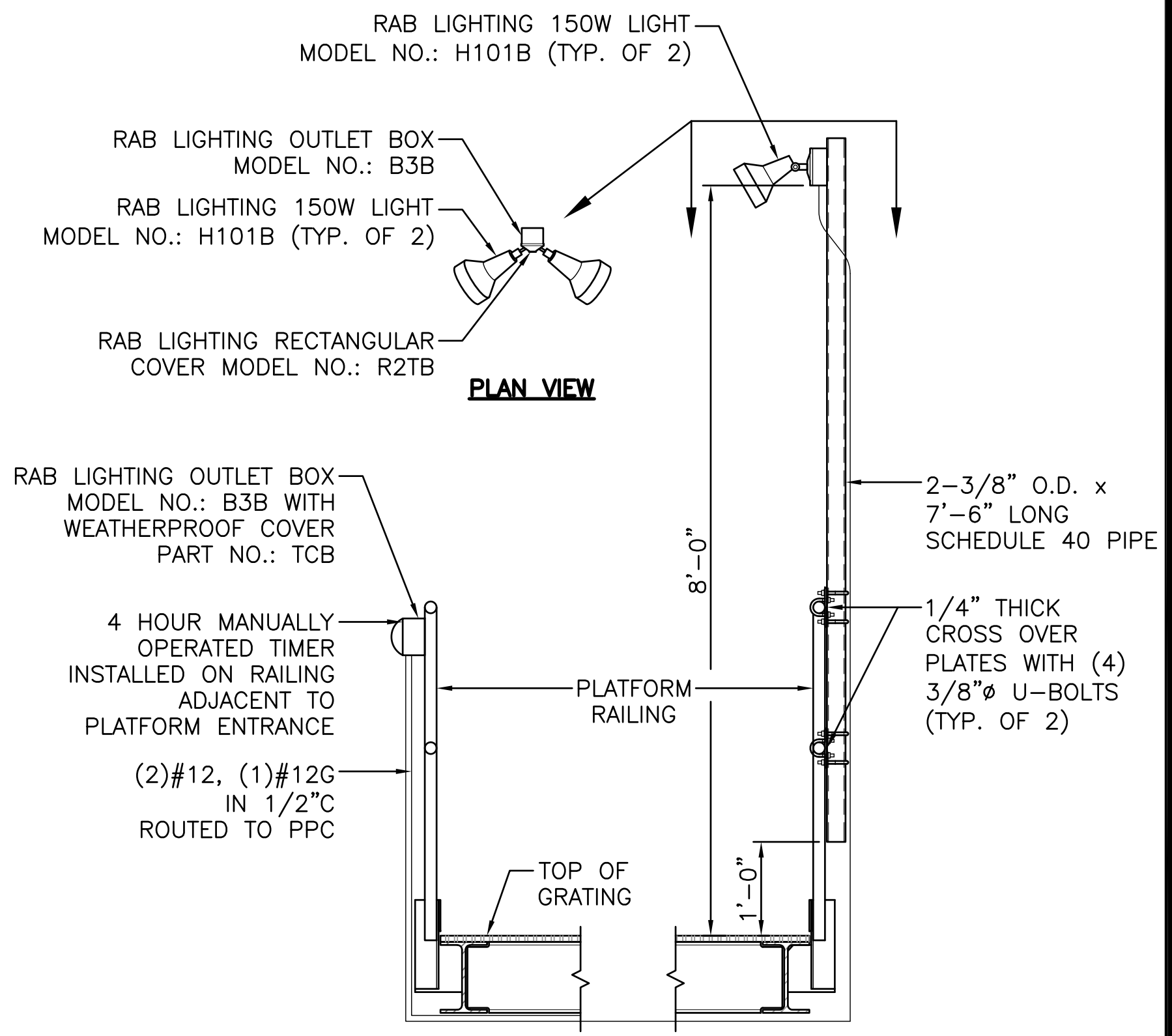


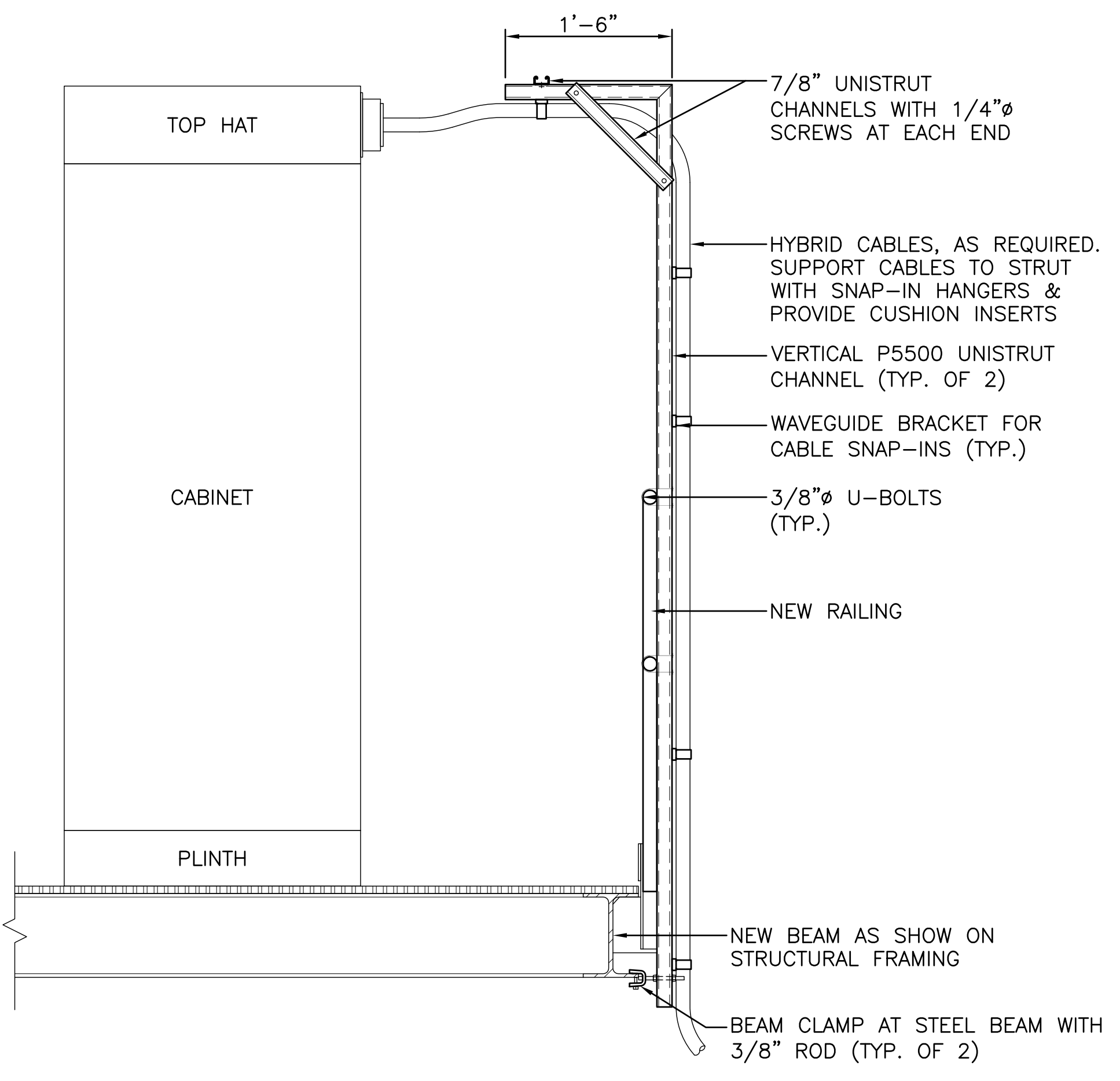
**1 EQUIPMENT PLAN**  
SCALE: N.T.S.



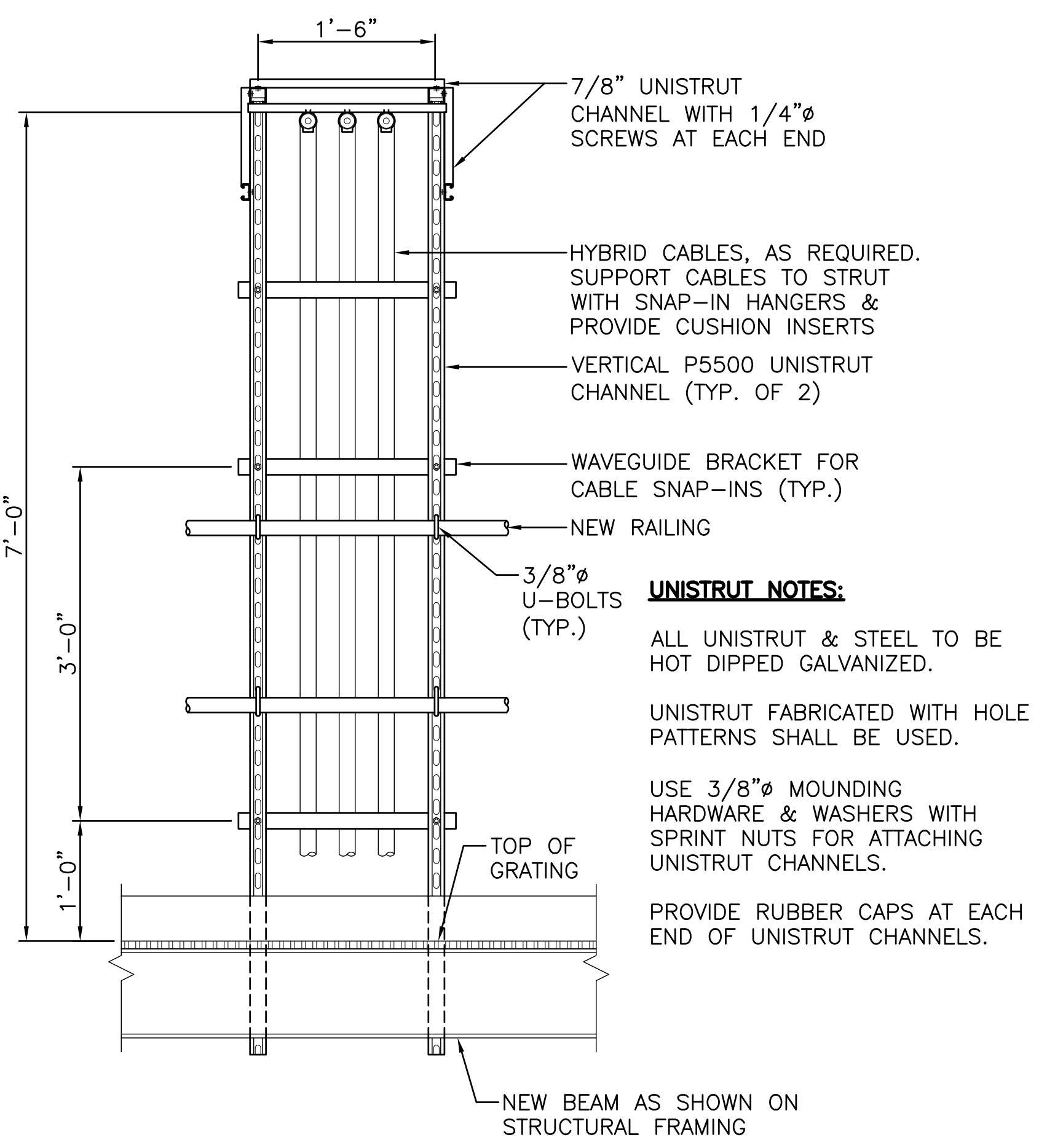
**2 H-FRAME DETAIL**  
SCALE: N.T.S.



**3 PLATFORM LIGHT DETAIL**  
SCALE: N.T.S.

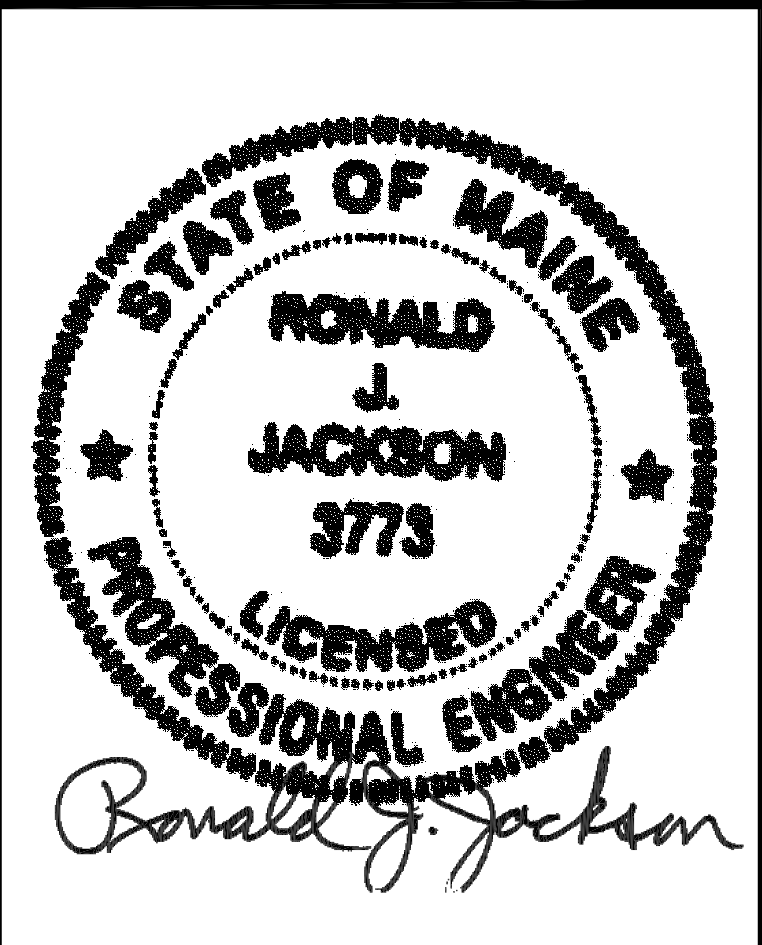


**4 CABLE LADDER DETAIL**  
SCALE: N.T.S.



**5 CABLE TRAY DETAIL**  
SCALE: N.T.S.

**NOTE:**  
CONDUIT SITE & CONDUCTORS SHOWN NOT TO EXCEED 30 FEET IN LENGTH FROM POWER CABINET TO LIGHT FIXTURE.



THIS DOCUMENT IS THE DESIGN PROPERTY AND COPYRIGHT OF NEXIUS AND FOR THE EXCLUSIVE USE BY THE TITLE CLIENT. DUPLICATION OR USE WITHOUT THE EXPRESS WRITTEN CONSENT OF THE CREATOR IS STRICTLY PROHIBITED.  
DRAWING SCALES ARE INTENDED FOR 24"x36" SIZE PRINTED MEDIA ONLY. ALL OTHER PRINTED SIZES ARE DEEMED "NOT TO SCALE".

SUBMITTALS			
REV	DATE	DESCRIPTION	BY
0	03/01/17	FOR REVIEW	JM
1	03/13/17	REVISED PER COMMENTS	JM
2	04/07/17	REVISED FOR CONSTRUCTION	JM

SITE INFO:  
SITE NAME:  
**PORTLAND\_8\_ME**  
LOCATION CODE:  
**380405**  
SITE ADDRESS:  
**44 BEDFORD STREET  
PORTLAND, ME 04101  
CUMBERLAND COUNTY**

SHEET TITLE:  
**EQUIPMENT PLAN & CONSTRUCTION DETAILS**

NEXIUS PROJ. NO: <b>VZ11509</b>	SHEET NUMBER: <b>A-3</b>
CHECKED BY: KB	
CHECKED BY DATE: 03/01/17	