

VARIABLE AIR VOLUME BOX SCHEDULE																		
TAG	SERVES	MODEL	SIZE	MIN CFM	HEAT CFM	MAX CFM	APD	DISCHARGE NC	RADIATED NC	REHEAT COIL						NOTES		
										EAT °F	LAT °F	MBH	GPM	ROWS	WPD		EWT	LWT
VAV-16	EXTERIOR OFFICES C577 & C578	SDR-WC	6"Ø	125	125	350	0.21	21	21	55	106	6.8	1.0	1	1.0	180	159	1, 2, 3, 4
VAV-17	EXTERIOR OFFICES C579 & C580	SDR-WC	6"Ø	100	125	250	0.11	-	-	55	106	6.8	1.0	1	1.0	180	159	1, 2, 3, 4
VAV-19	EXTERIOR OFFICES C581, C582 & C583	SDR-WC	8"Ø	200	200	600	0.15	-	21	55	99	9.5	1.0	1	1.0	180	161	1, 2, 3, 4
VAV-20	COLLAB C575, OFFICES C590 & C591	SDR-WC	8"Ø	200	300	600	0.15	-	21	55	90	11.5	1.0	1	1.0	180	156	1, 2, 3, 4
VAV-21	WAITING C576, OFFICE C588, WORK C589	SDR-WC	6"Ø	150	200	400	0.27	22	22	55	95	8.8	1.0	1	1.0	180	162	1, 2, 3, 4
VAV-22	RECEPTION C584, OFFICE C585	SDR-WC	8"Ø	175	175	500	0.11	-	20	55	102	8.9	1.0	1	1.0	180	148	1, 2, 3, 4
VAV-23	OFFICE C586, STUDY C587	SDR-WC	6"Ø	150	200	400	0.27	22	22	55	95	8.8	1.0	1	1.0	180	162	1, 2, 3, 4
VAV-24	MAKER SPACE C592	SDR-WC	6"Ø	150	150	400	0.27	22	22	55	102	7.6	1.0	1	1.0	180	164	1, 2, 3, 4
VAV-25	SOUND ROOM C572	SDR-WC	6"Ø	100	100	300	0.10	-	20	55	105	5.5	0.5	1	0.3	180	157	1, 2, 3, 4, 5
VAV-26	CIZ OFFICE C574	SDR-WC	6"Ø	100	100	300	0.10	-	20	55	105	5.5	0.5	1	0.3	180	157	1, 2, 3, 4, 6
EAV-16	MAKER SPACE C592 EXHAUST	SDR	6"Ø	100	-	400	0.05	-	-	-	-	-	-	-	-	-	-	1, 2, 3, 4, 6

VARIABLE AIR VOLUME BOX SCHEDULE NOTES:
1. BASED ON ENVIROTEC TO MATCH EXISTING
2. HEATING COIL PERFORMANCE CALCULATED AT HEATING AIR FLOW.
3. AIR PRESSURE DROP CALCULATED AT MAXIMUM AIR FLOW.
4. NOISE CRITERIA (NC) BASED ON 1.0" ΔP.
5. ALTERNATE #1
6. ALTERNATE #2

DIFFUSER / GRILLE AND REGISTER SCHEDULE										
TAG	DESCRIPTION	NECK SIZE (W x H)	MAX CFM	SP (IN-WC)	THROW FT	NC	TYPE	MODEL	MOUNTING	NOTES
SD-1	SUPPLY AIR DIFFUSER	12 x 12	300	0.036	8-12-19	<15	4-WAY	24x24-SMD-TYPE 3P	LAY-IN	1, 2
SD-2	SUPPLY AIR DIFFUSER	18 x 18	600	0.036	12-17-24	<15	4-WAY	24x24-SMD-TYPE 3P	LAY-IN	1, 2
RG-1	RETURN AIR GRILLE	20 x 20	1600	0.057	-	<15	EGG CRATE	81-TBP	LAY-IN	1, 2
EG-1	EXHAUST AIR GRILLE	10 x 10	300	0.034	-	<15	EGG CRATE	81-TBP	LAY-IN	1, 2
EG-2	EXHAUST AIR GRILLE	12 x 12	600	0.066	-	<15	EGG CRATE	81-TBP	LAY-IN	1, 2
TG-1	TRANSFER AIR GRILLE	12 x 12	600	0.066	-	<15	EGG CRATE	81-TBP	LAY-IN	1, 2

DIFFUSER / GRILLE SCHEDULE NOTES:
1. BASED ON PRICE
2. PROVIDE WHITE FINISH

FAN COIL UNIT SCHEDULE											
TAG	SERVES	CFM	MIN OUTSIDE AIR CFM	ESP	MOTOR QTY / HP	POWER	FILTERS		MODEL	WEIGHT	NOTES
							TYPE	EFF			
FC-1	CLASSROOM 305	1,580	400	0.25	2 / 0.33	120/160	2" PLEATED	MERV 8	HHDB116	160	1, 2, 3, 4

CHILLED WATER COOLING COIL											
TAG	AREA	ROWS	FPI	EAT °F	LAT °F	EWT	LWT	GPM	WPD	TOTAL MBH	SENS MBH
FC-1	3.2	3	12	80 / 67	60 / 58	46	56	8.8	2.3	44	34

HOT WATER HEATING COIL										
TAG	AREA	ROWS	FPI	EAT °F	LAT °F	EWT	LWT	GPM	WPD	MBH
FC-1	3.2	1	12	55	78	180	150	2.6	0.7	40

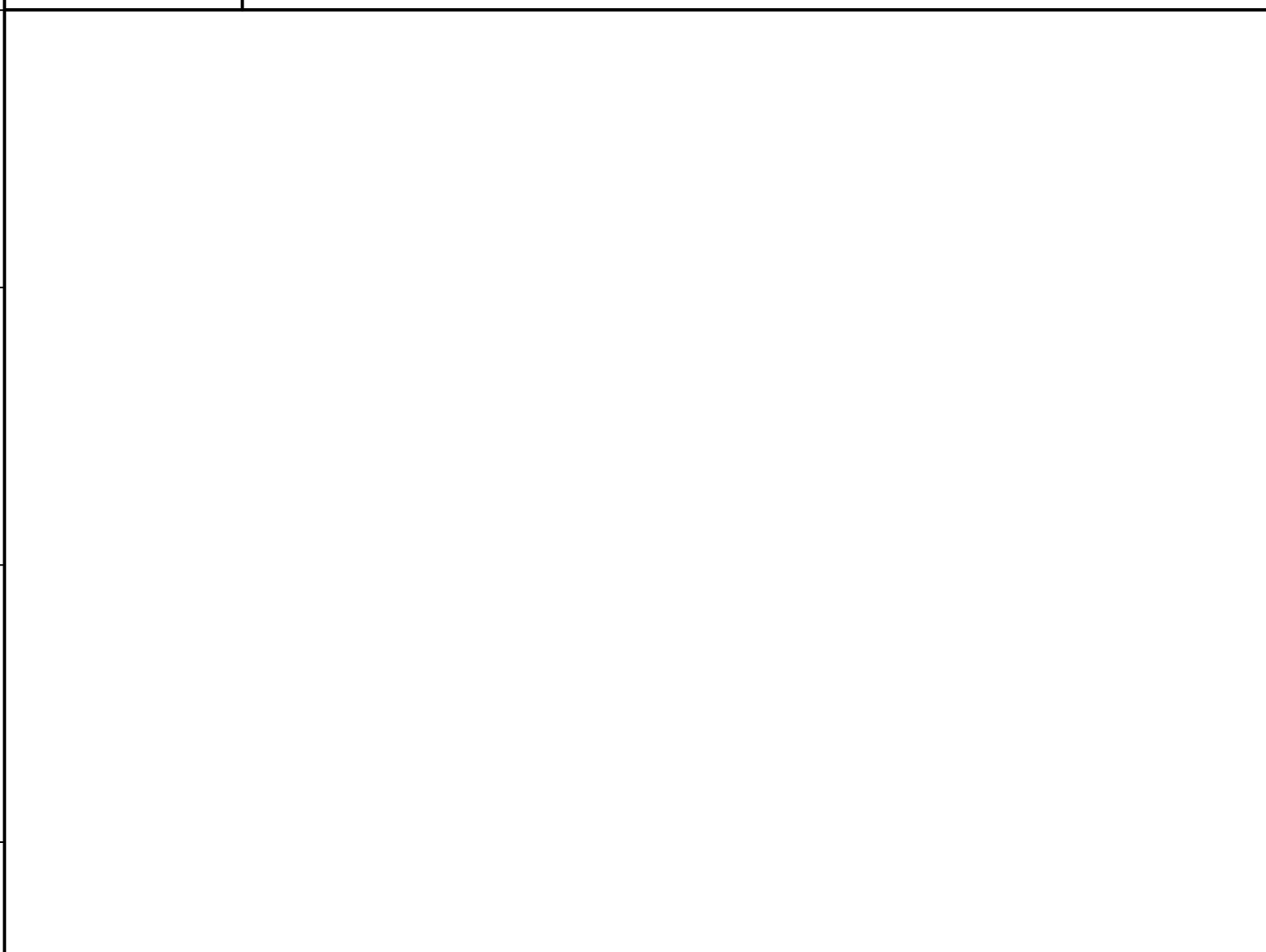
AIR HANDLING UNIT SCHEDULE NOTES:
1. BASED ON DAIKIN APPLIED
2. PROVIDE W/ FIELD SELECTABLE SPEED ECM MOTOR
3. PROVIDE W/ STAINLESS STEEL DRAIN PAN
4. PROVIDE W/ VIBRATION ISOLATION HANGERS

FINNED-TUBE RADIATOR SCHEDULE											
TAG	TYPE	BTU/FT	PIPING	GPM	TIERS	FPF	ELEMENT	MODEL	AVG WATER TEMP °F	EAT °F	NOTES
FTR-1	WALL MOUNTED	832	3/4" CU	1.0	1	50	3-1/4" SQ x 0.020"	JVA-S14	170	70	1, 2, 3
FTR-2	WALL MOUNTED	728	3/4" CU	1	1	50	3-1/4" SQ x 0.020"	JVA-A	170	70	1, 2

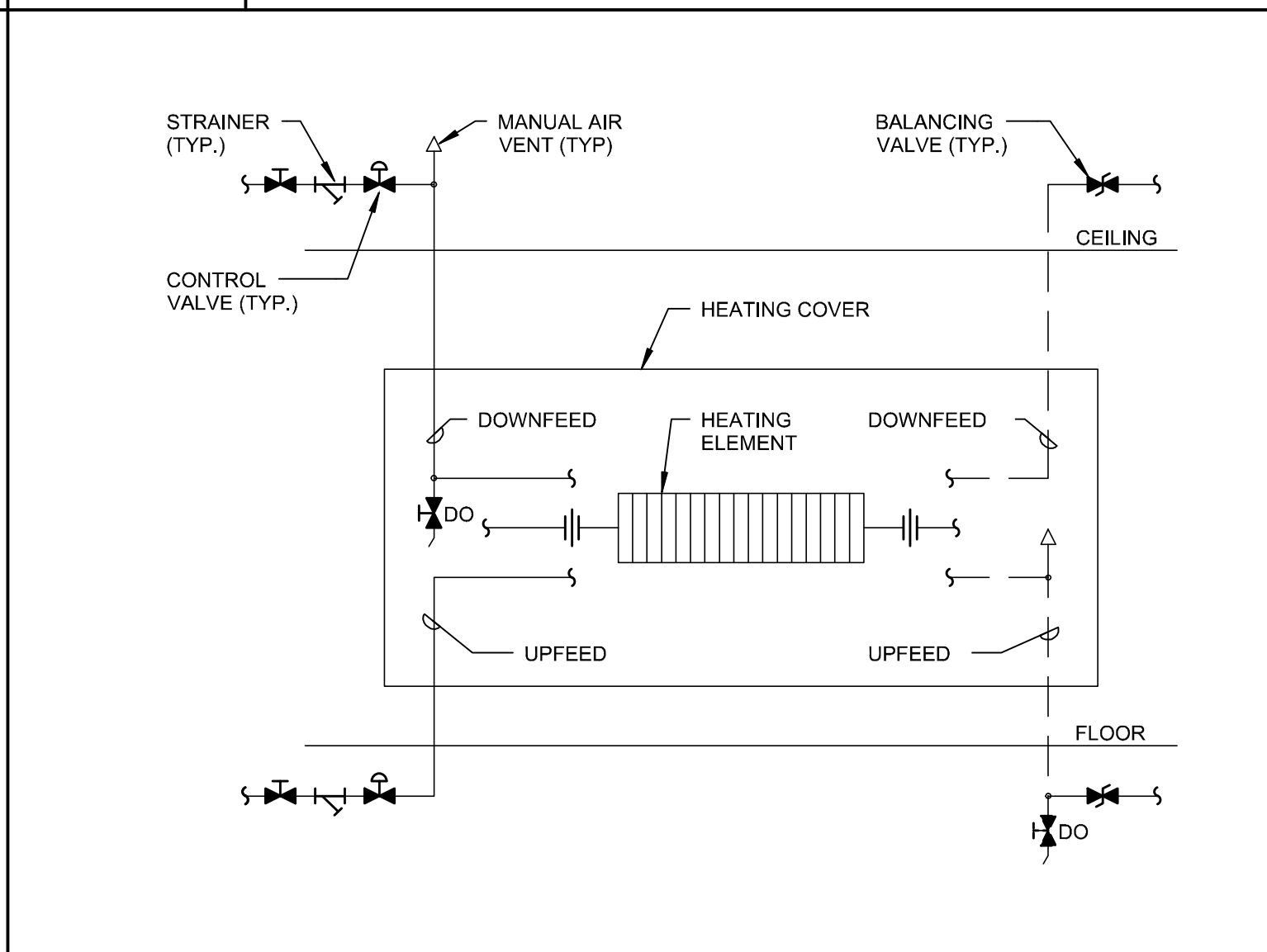
FINNED-TUBE RADIATOR SCHEDULE NOTES:
1. BASED ON STERLING
2. PROVIDE COLOR AS SELECTED BY ARCHITECT
3. FULL HEIGHT BACKPLATE
4. BARE ELEMENT

PLUMBING FIXTURE SCHEDULE										
TAG	DESCRIPTION	HW	CW	TRAP	WASTE	VENT	MOUNTING HEIGHT	NOTES		
SK-1	ADA - SINGLE BOWL SINK	1/2"	1/2"	2"	2"	1-1/2"	COUNTER	COORDINATE WITH CASEWORK		

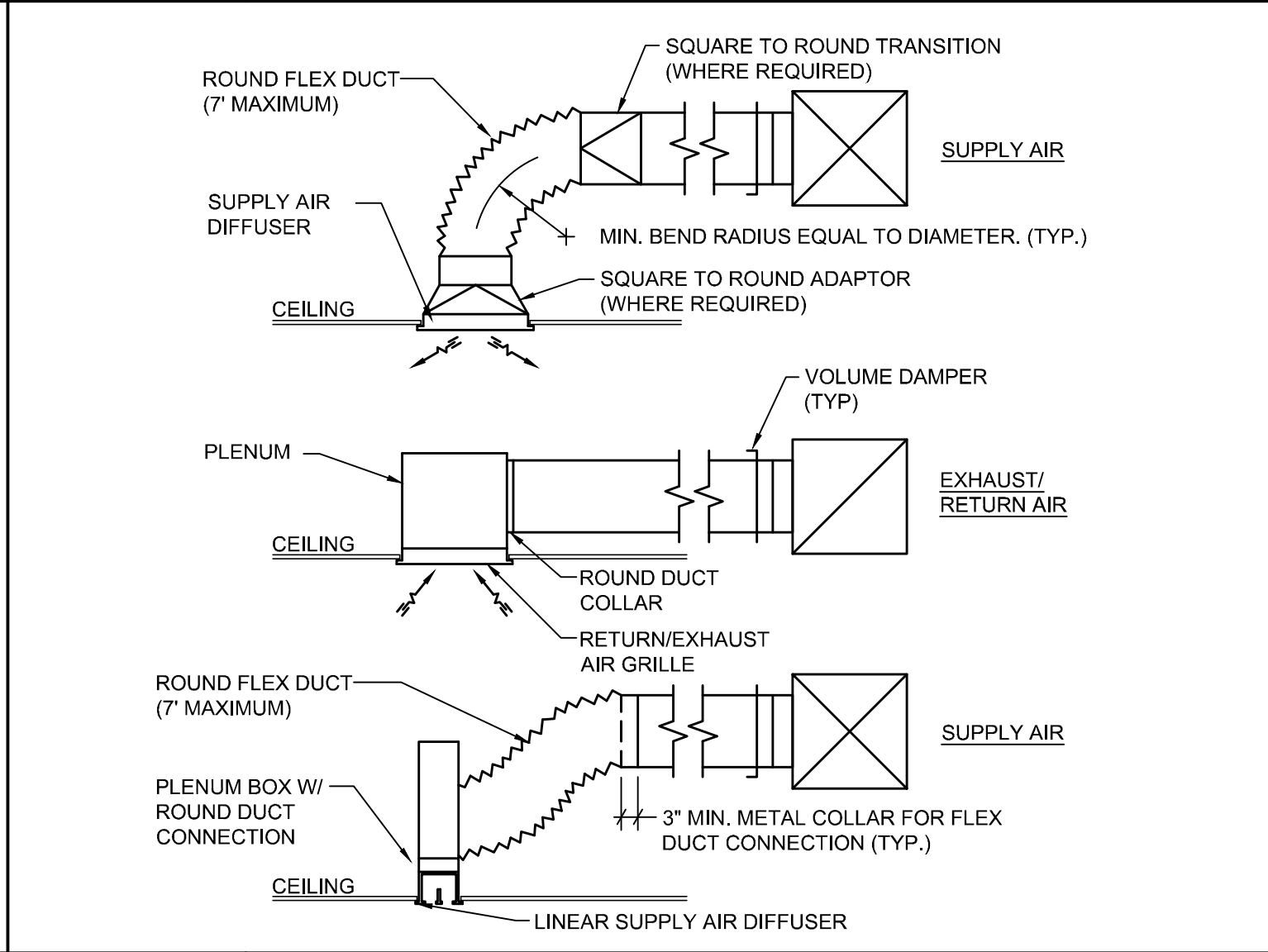
N1	--	N5	--
NTS	--	NTS	--



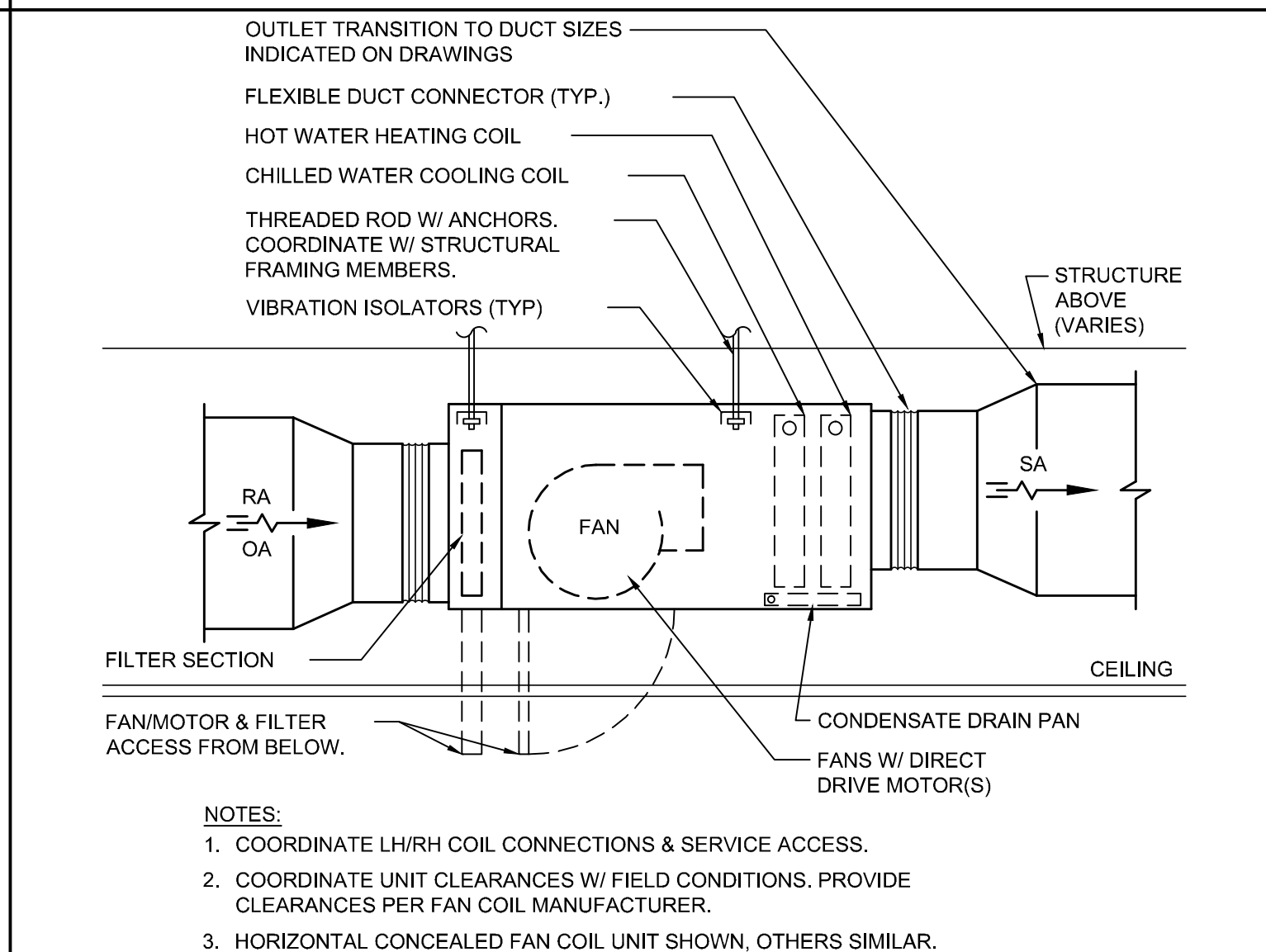
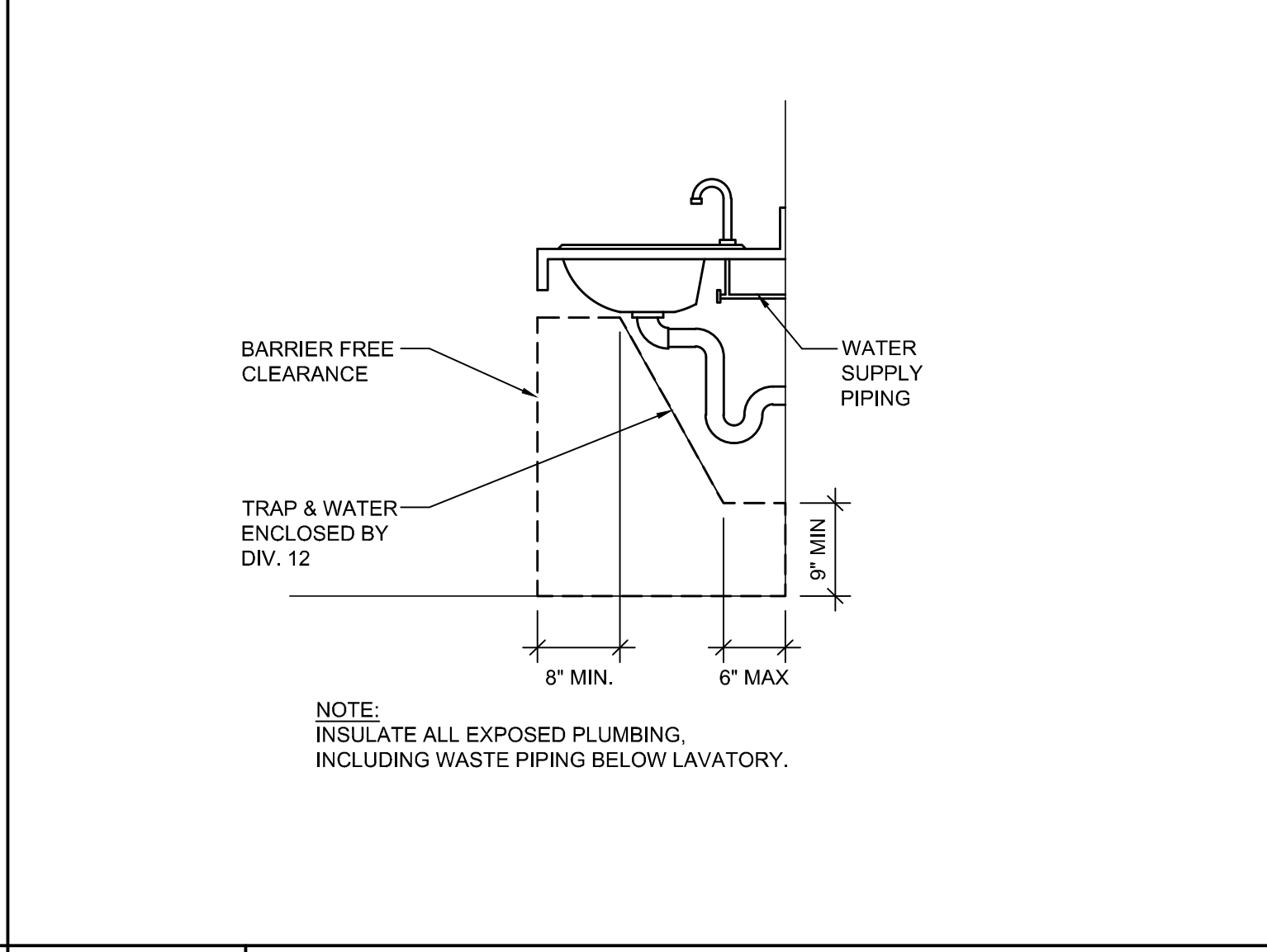
J1	--	J5	FINNED-TUBE RADIATION PIPING SCHEMATIC	J9	TYPICAL SUSPENDED FAN COIL DETAIL
NTS	--	NTS	--	NTS	--



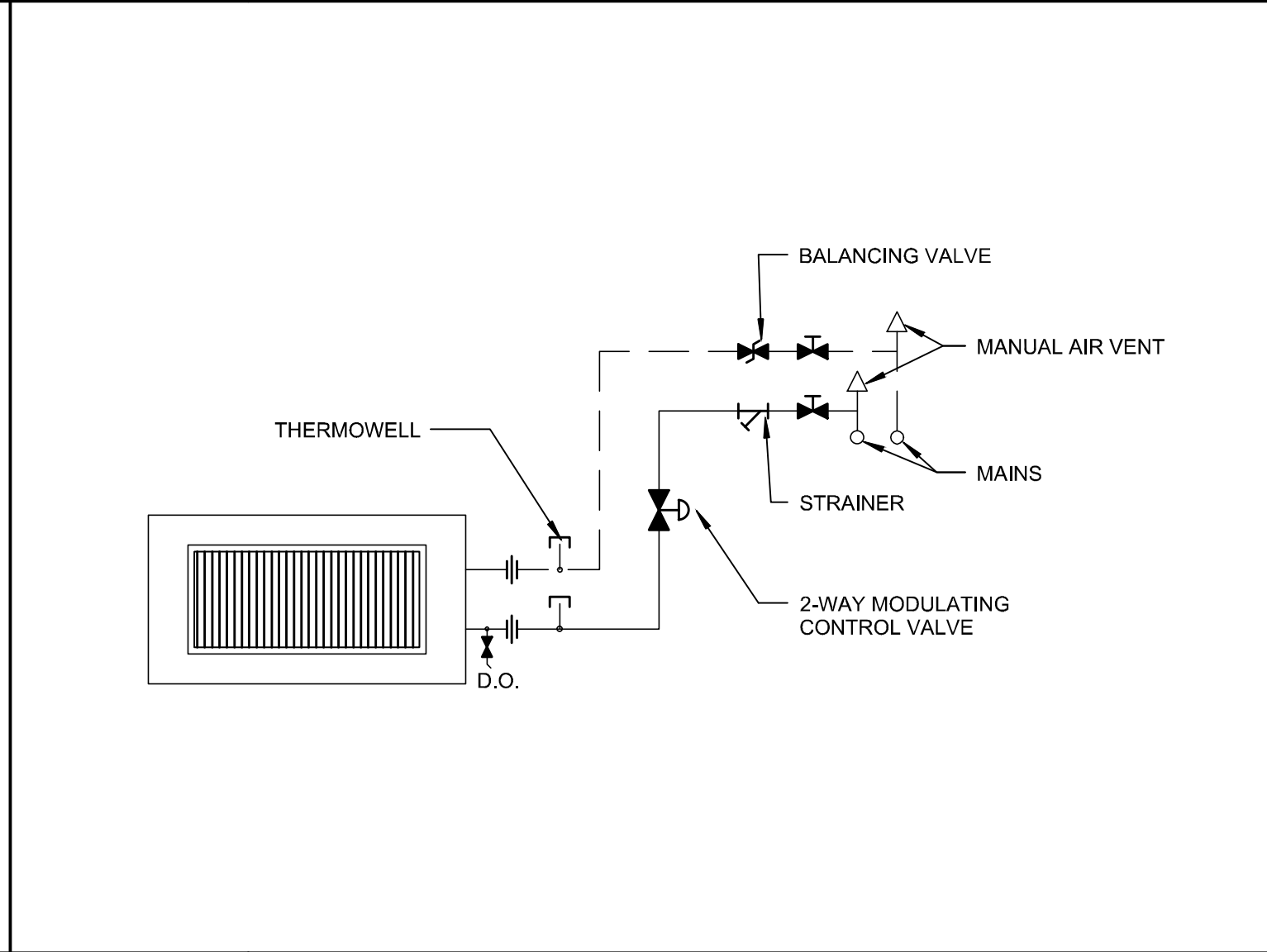
E1	--	E5	TYPICAL DIFFUSER & GRILLE DETAIL	E9	TYPICAL COIL PIPING DETAIL
NTS	--	NTS	--	NTS	--



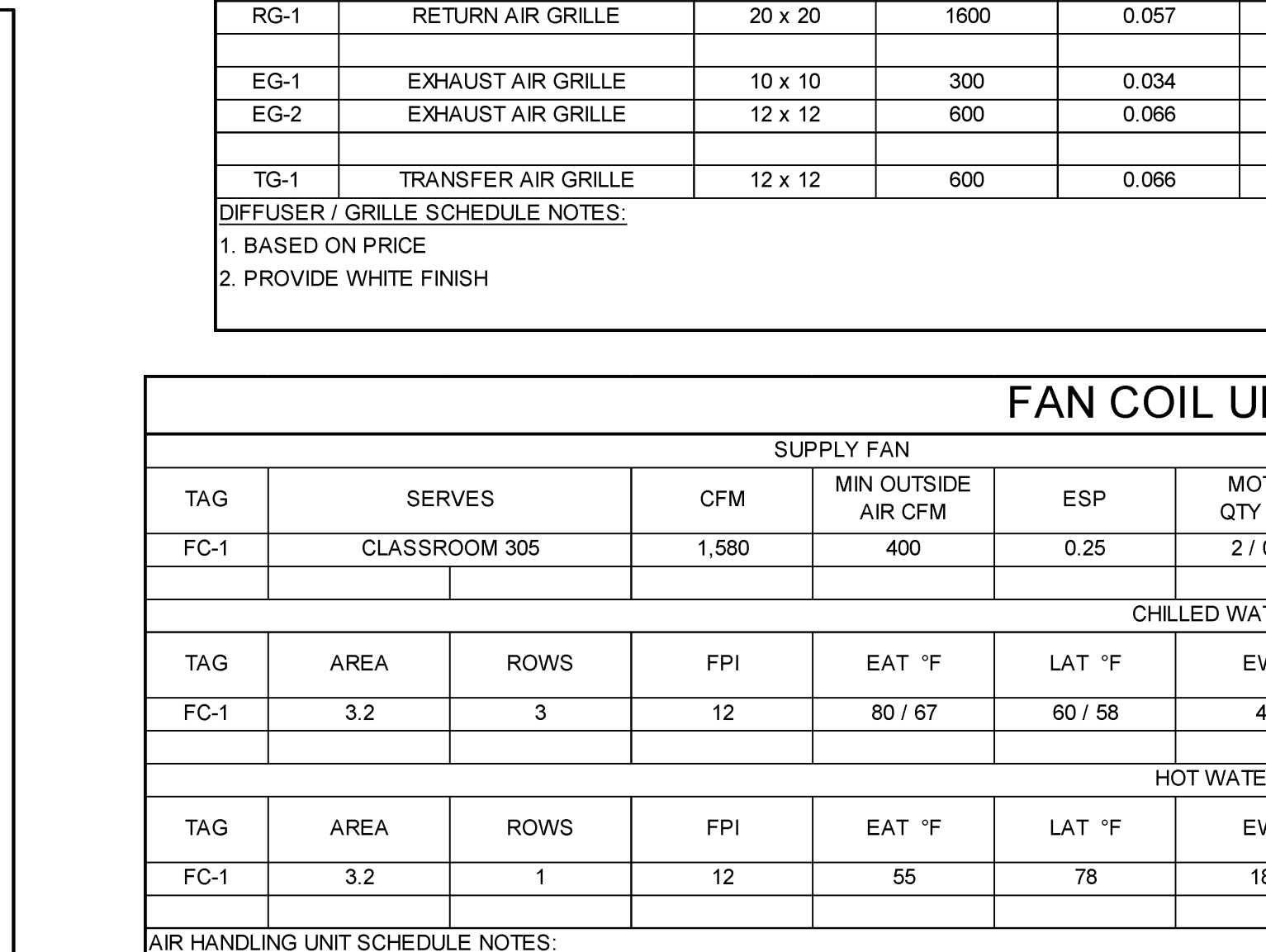
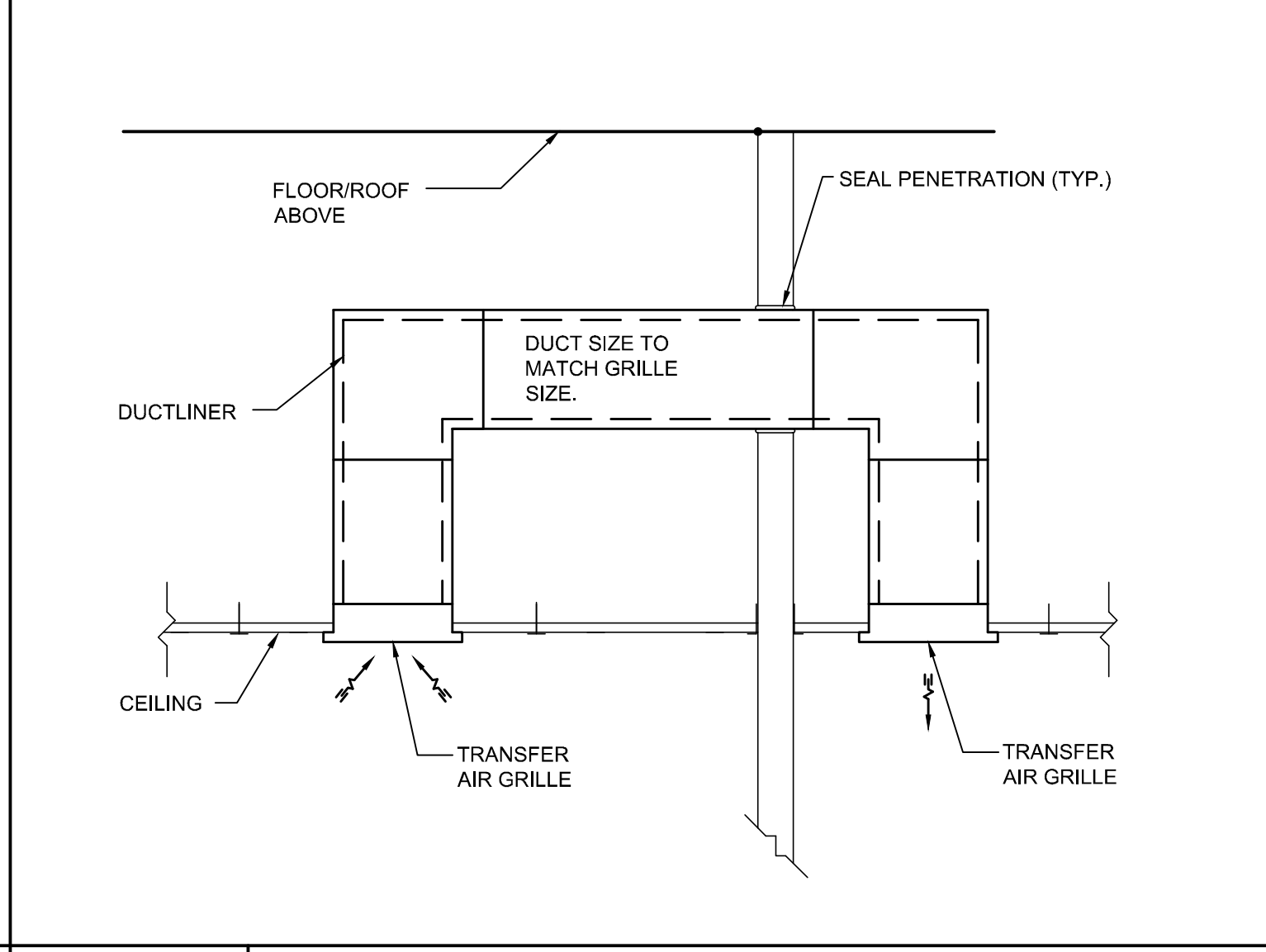
A1	--	A5	ADA RECESSED SINK DETAIL	A9	TRANSFER GRILLE DETAIL
NTS	--	NTS	--	NTS	--



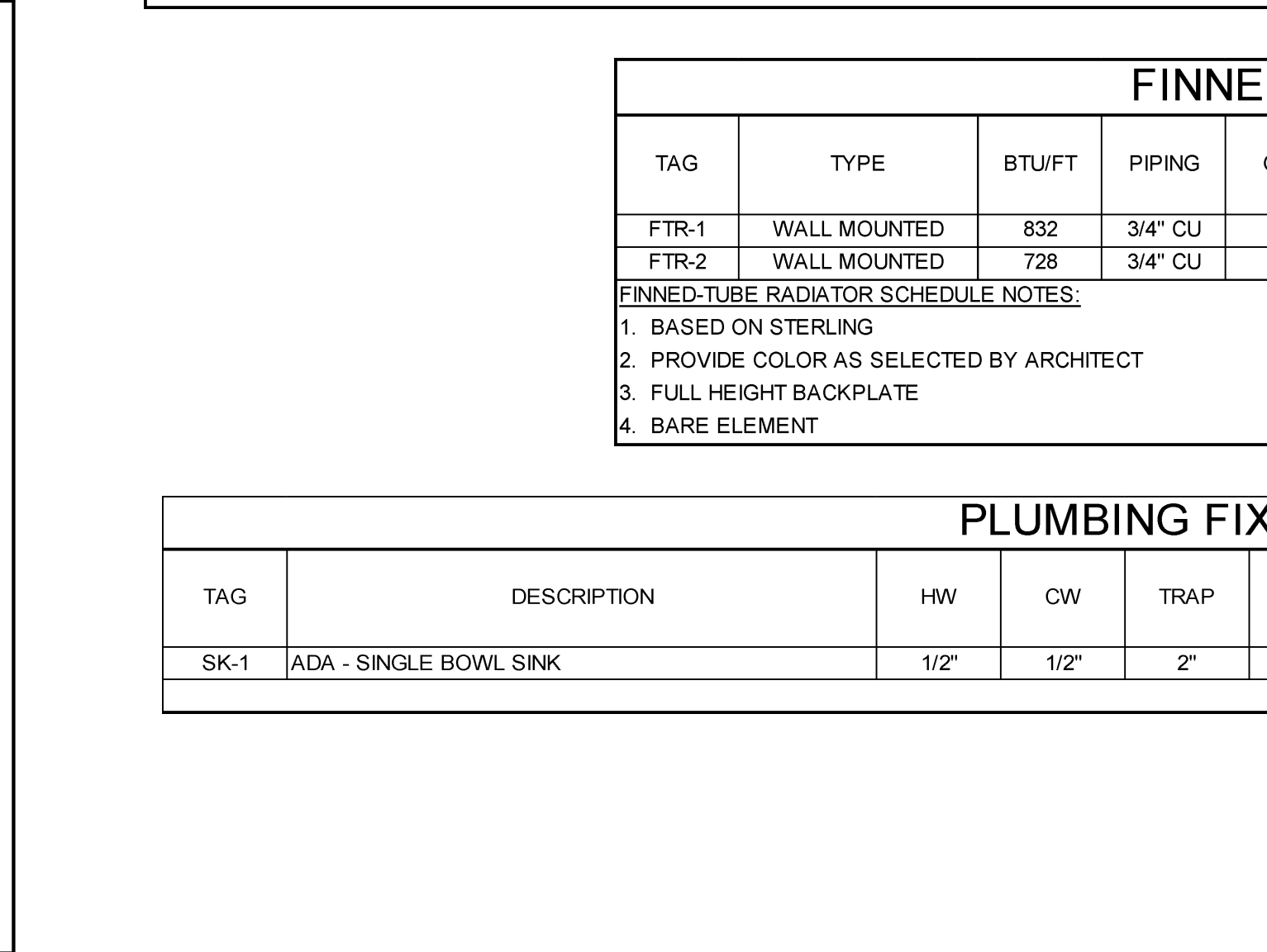
A13	VAV DETAIL
NTS	--



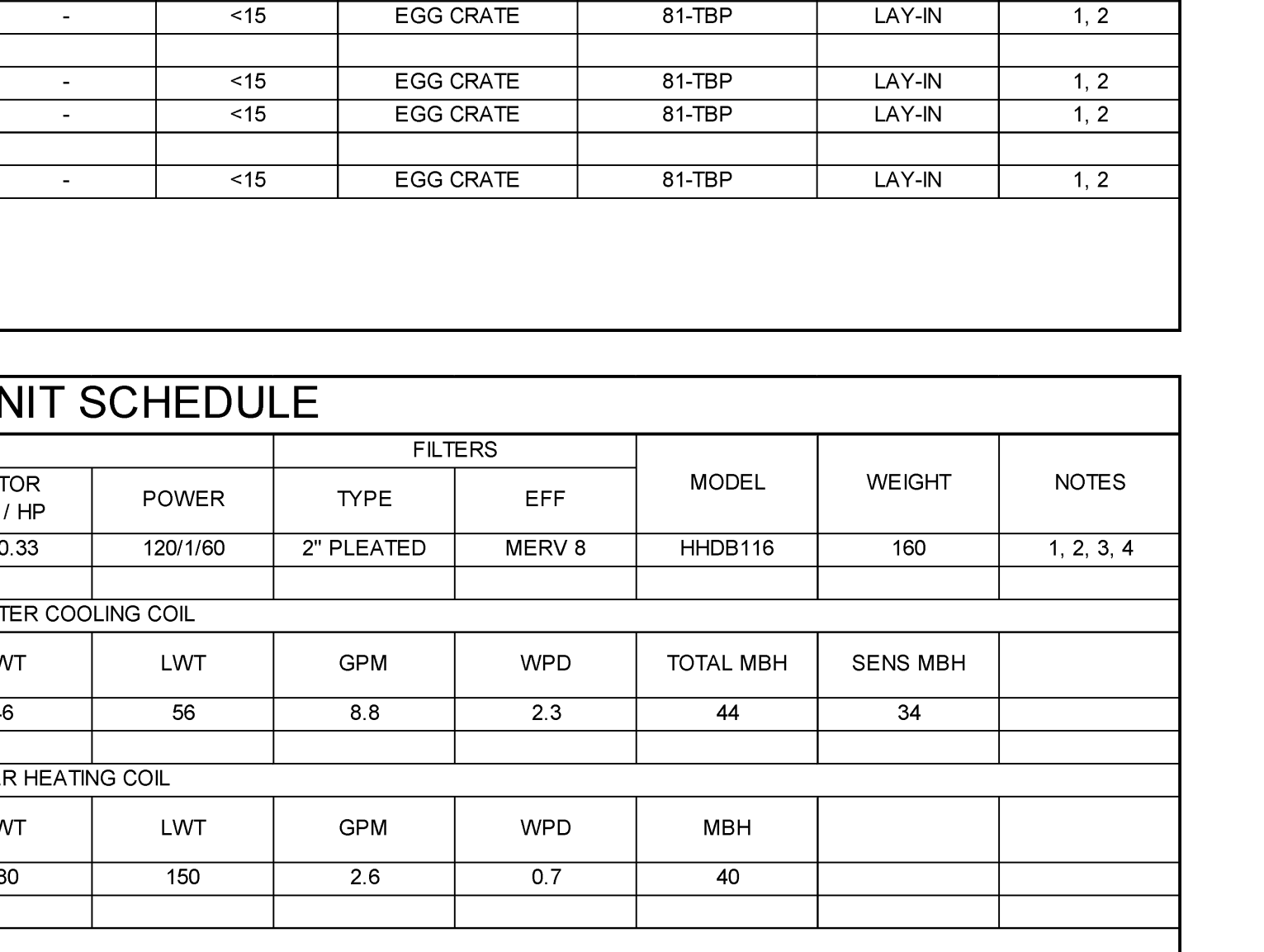
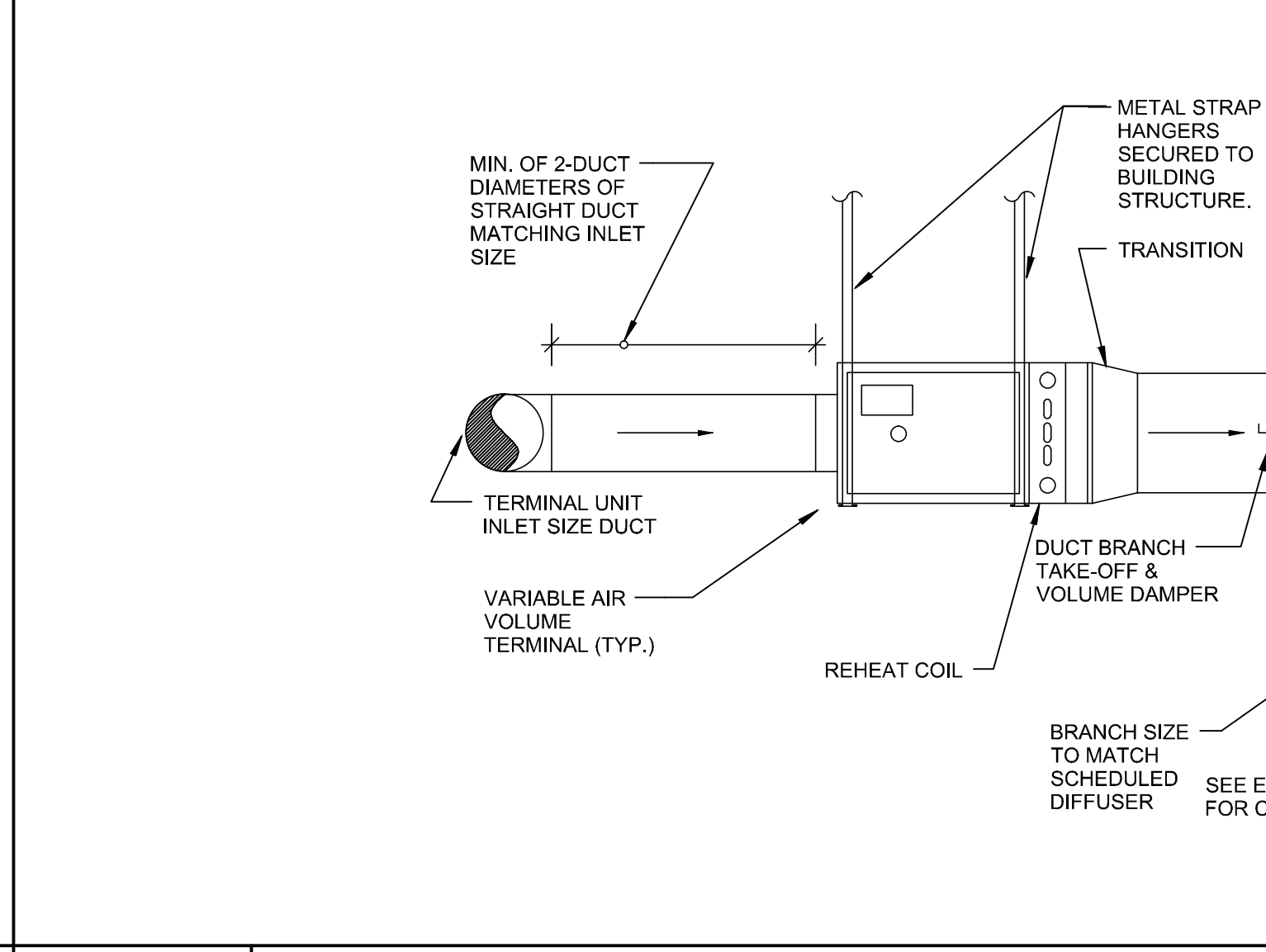
A13	VAV DETAIL
NTS	--



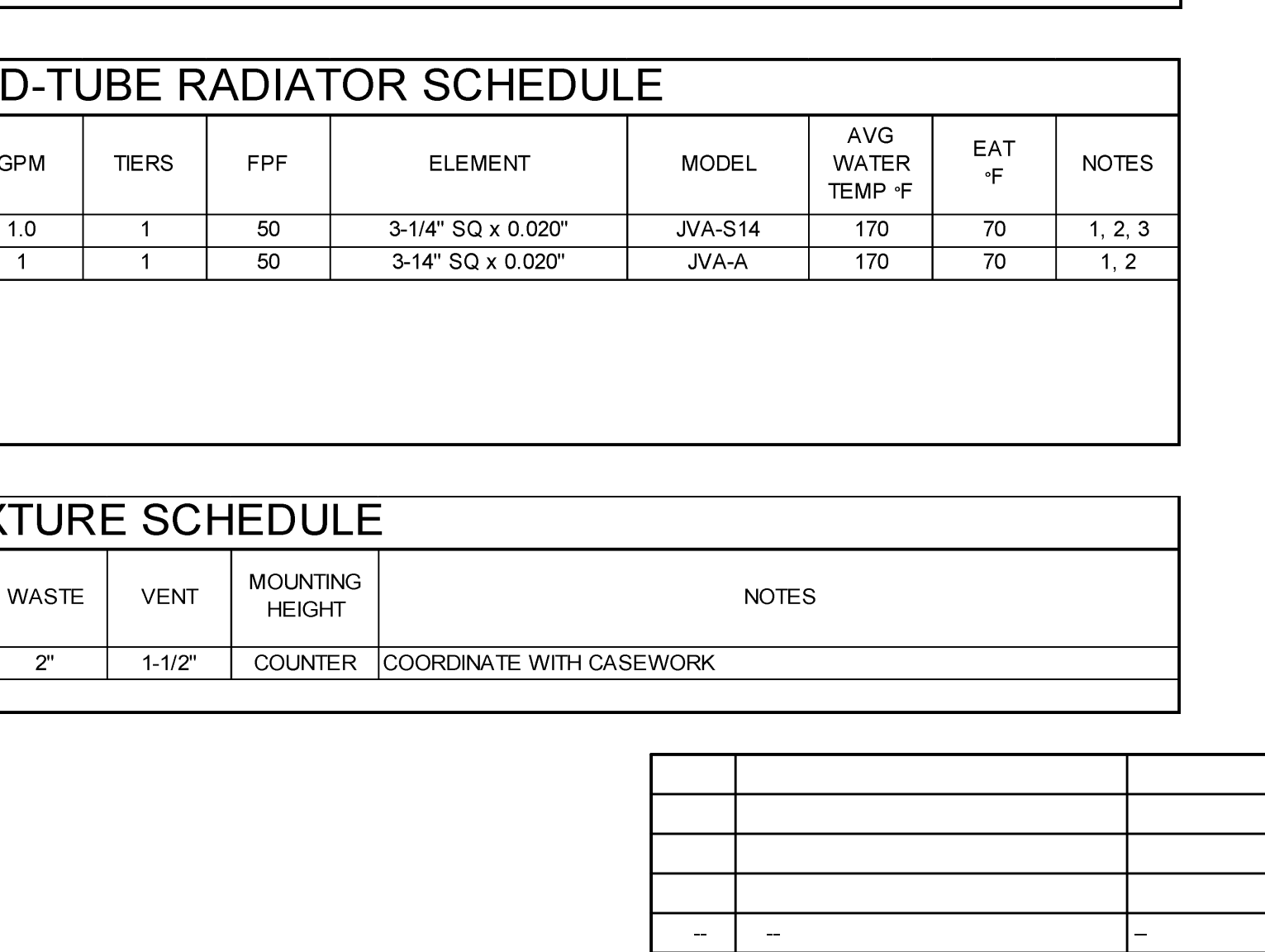
A13	VAV DETAIL
NTS	--



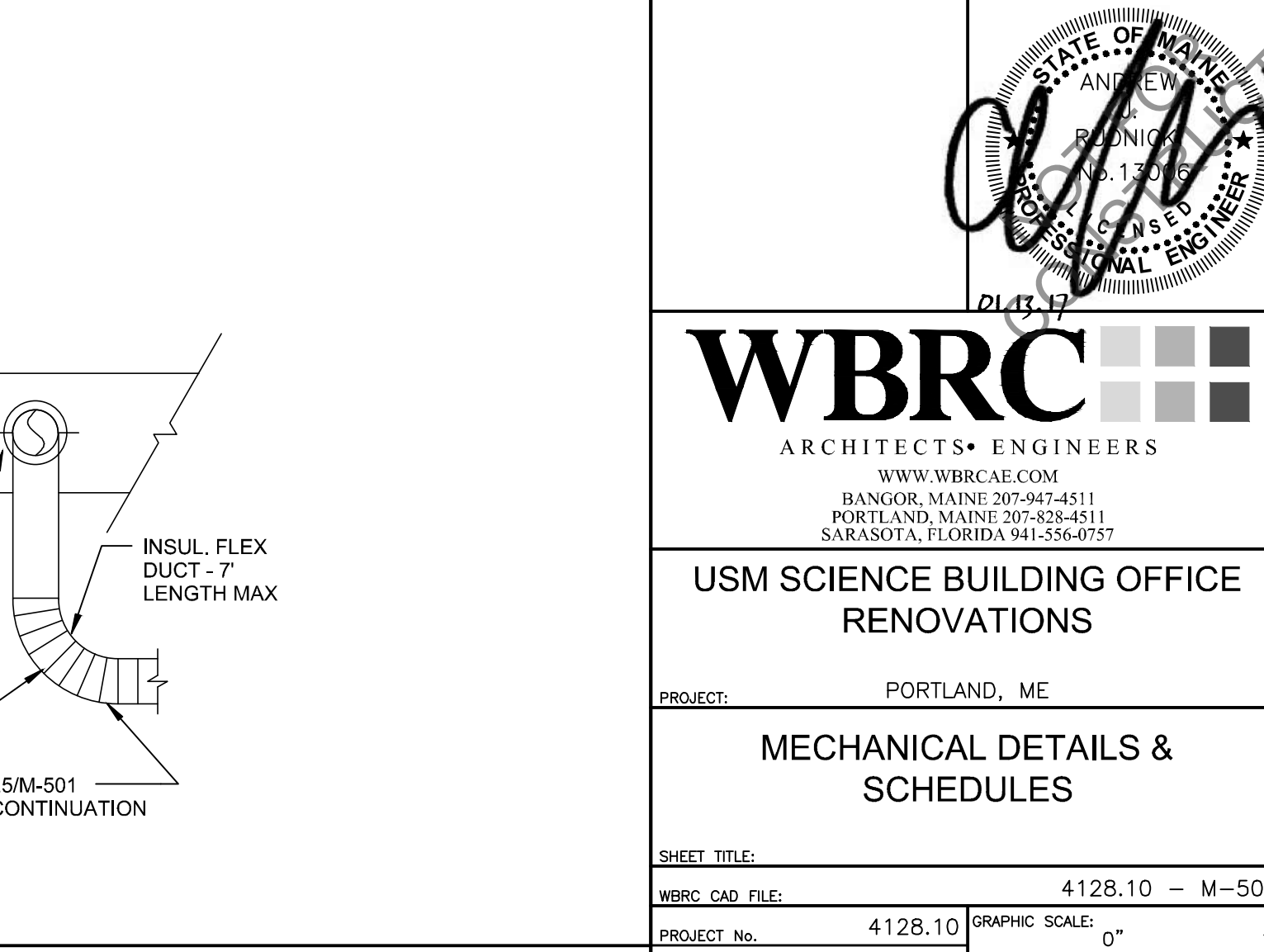
A13	VAV DETAIL
NTS	--



A13	VAV DETAIL
NTS	--



A13	VAV DETAIL
NTS	--



1/12/2017 9:46 PM T:\02 PROJECTS - MANE\1101-4200\112810 USM SCIENCE BLDG CONSULTATION\3 DESIGN\WORKS\BID\03 USM SCIENCE BUILDING SHEETS\1128-10-M-501 MECHANICAL DETAILS & SCHEDULES.DWG ANDREW FELDMAN

STATE OF MAINE ARCHITECTS & ENGINEERS
WBRC
ARCHITECTS • ENGINEERS
WWW.WBRC.COM
BANGOR, MAINE 207-647-4511
PORTLAND, MAINE 207-639-4911
SARASOTA, FLORIDA 941-556-0075

USM SCIENCE BUILDING OFFICE RENOVATIONS
PROJECT: PORTLAND, ME
MECHANICAL DETAILS & SCHEDULES

SHEET TITLE: 4128.10 - M-501
WBRC CAD FILE: 4128.10 GRAPHIC SCALE: 0"
PROJECT No. AS NOTED
SCALE: AS NOTED
PROJECT MANAGER: MEJ SHEET No.
DRAWN BY: AJR
CHECKED BY: AJR

M-501