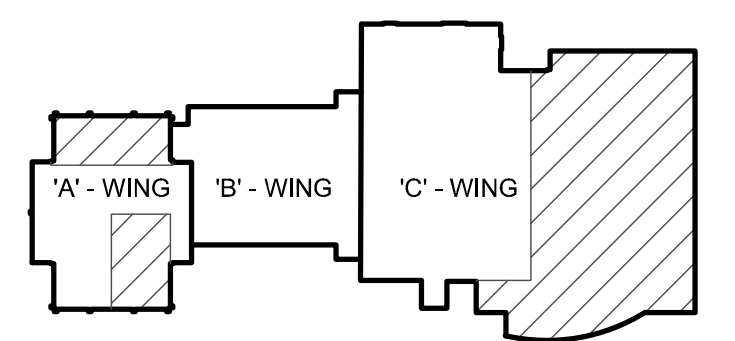


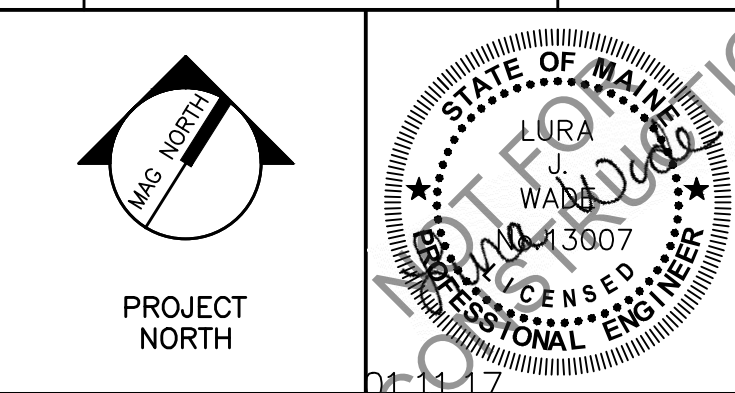
**TECHNICAL NOTES**

- ① REMOVE MONUMENT MOUNTED DEVICE INSTALLED ON CASEWORK
- ② REMOVE ALL POWER ASSOCIATED WITH CASEWORK BEING REMOVED.
- ③ SELECTABLE DEVICE SHALL BE CHANGED FROM 15CD TO 30CD
- ④ 2-ZONE 0-10V DIMMING ROOM CONTROLLER - CONTROLLER SHALL BE EQUAL TO HUBBELL BUILDING AUTOMATION, CAT NO. NXRC-2RD-UNV. REFER TO DETAIL J8/E-501 FOR ADDITIONAL WIRING INFORMATION.
- ⑤ EXISTING MECHANICAL EQUIPMENT TO BE REMOVED AND RELOCATED - POWER SHOULD REMAIN AT EXISTING LOCATION FOR RECONNECTION.
- ⑥ EXISTING MECHANICAL EQUIPMENT TO BE REMOVED - REMOVE ALL ASSOCIATED ELECTRICAL DEVICES AND CONNECTIONS. CONDUCTORS AND CONDUIT SHALL BE REMOVED BACK TO PANEL BOARD. IF ALL LOAD HAS BEEN REMOVED FROM BREAKER TURN OFF BREAKER AND LABEL SPARE.
- ⑦ RECONNECT TO EXISTING POWER CIRCUIT.
- ⑧ MULTI-OUTLET ASSEMBLY SHALL BE EQUAL TO WIREMOLD 4000 SERIES. DUPLEX RECEPTACLES SHALL BE 18" O.C. AND SHALL ALTERNATE CIRCUITS. DATA JACKS SHOWN SHALL BE LOCATED AS SHOWN. ANY OUTLET WITHIN 6'-0" OF WATER SOURCE SHALL BE GFI.
- ⑨ REMOVE ALL ELECTRICAL CONNECTIONS ASSOCIATED WITH FUME HOOD TO BE REMOVED. CONDUCTORS AND CONDUIT SHALL BE REMOVED BACK TO PANELBOARD. ASSOCIATED BREAKER SHALL BE TURNED OFF AND LABELED SPARE.



**KEY PLAN**

REV.	DESCRIPTION	DATE
--	--	--
--	--	--
--	BID DOCUMENTS	01-13-17



**WBRC**  
ARCHITECTS • ENGINEERS  
WWW.WBRCAE.COM  
BANGOR, MAINE 207-945-4511  
PORTLAND, MAINE 207-838-4511  
SAVANNAH, FLORIDA 914-556-9727

**USM SCIENCE BUILDING OFFICE RENOVATIONS**

PROJECT: PORTLAND, ME  
**THIRD FLOOR ELECTRICAL PLANS**

SHEET TITLE: 412B.10 - E-103  
WBRC CAD FILE: 412B.10 GRAPHIC SCALE: 1" = 1'-0"  
PROJECT No.: 412B.10  
SCALE: AS NOTED  
PROJECT MANAGER: MEJ SHEET No.: E-103  
DRAWN BY: DVS  
CHECKED BY: LJJ

A1 THIRD FLOOR ELECTRICAL DEMO PLAN

1/8" = 1'-0"

A10 THIRD FLOOR ELECTRICAL PLAN

1/8" = 1'-0"