

HARRIMAN

AUBURN PORTLAND MANCHESTER

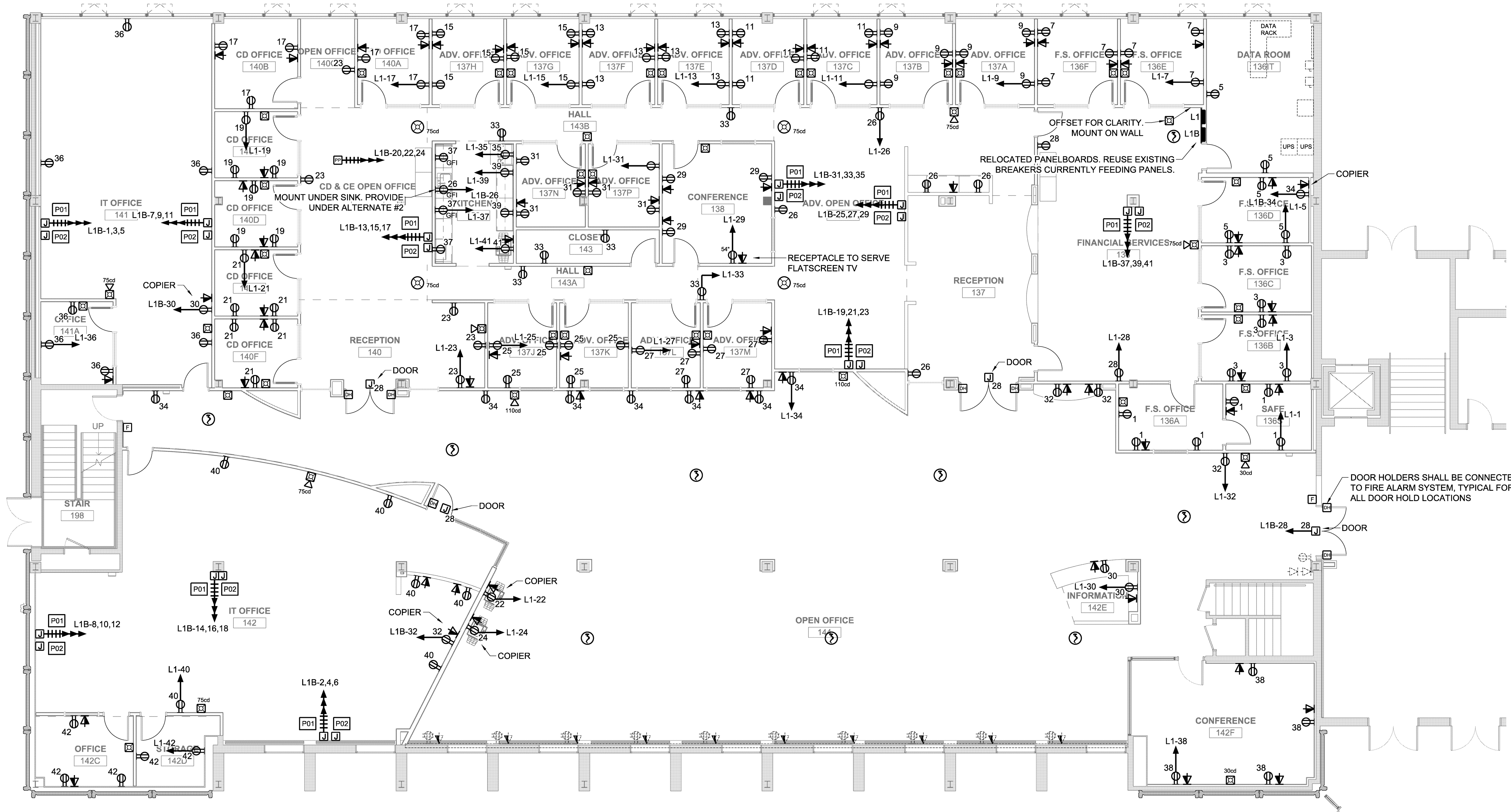
UNIVERSITY OF SOUTHERN MAINE DEPARTMENT REORGANIZATION PROJECT 2015-011
PORTLAND, MAINE

Harriman Project No. 15457

Key Plan Prj North

KEY NOTES:

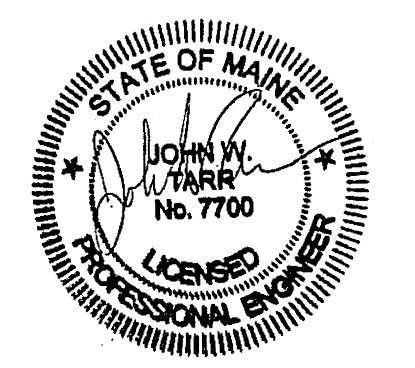
- P01... POWER-PROVIDE BLANK FACEPLATE, DRILL/MODIFY AS REQUIRED TO RECEIVE MODULAR FURNITURE POWER WHIP. MAKE ALL FINAL CONNECTIONS.
- P02... DATA-PROVIDE WALL BOX WITH DOUBLE GANG MUD RING WITH BLANK FACEPLATE, DRILL FACEPLATE AND PROVIDE GROMMET AS REQUIRED FOR OWNER'S DATA/VOICE CABLING. COORDINATE WITH OWNER'S VENDOR.



L1		VOLTAGE: 120/208 PH & WIRES: 3P 4W BUSES: 200		MAIN BREAKER: 200A MAIN BRKR AIC RATING: 22K AIC MOUNTING: SURFACE		LOCATION: DATA RM 138IT FEEDER: 4#4/0#4G-2 1/2" C	
LOAD DESCRIPTION	AMP	W	PH	W	PH	W	PH
TUB 1 OF 1 - REMARKS:							
RCPTS 136S+136A	20	1	1	1	1200	2815	---
RCPTS 136B+136C	20	1	3	3	1200	---	3104
RCPTS 136D+136G	20	1	5	5	1000	---	2502
RCPTS 136E+136F	20	1	7	7	1200	3043	---
RCPTS 137A+137B	20	1	9	9	1200	---	3085
RCPTS 137C+137D	20	1	11	11	1200	---	1200
RCPTS 137E+137F	20	1	13	13	1200	---	0
RCPTS 137G+137H	20	1	15	15	1200	---	1200
RCPTS 140A+140B	20	1	17	17	1200	---	1200
RCPTS 140C+140D	20	1	19	19	1200	---	0
RCPTS 140E+140F	20	1	21	21	1200	---	2200
RCPTS 140+140G	20	1	23	23	1000	---	2000
RCPTS 137J+137K	20	1	25	25	1200	2200	---
RCPTS 137L+137M	20	1	27	27	1200	---	1800
RCPTS 138	20	1	29	29	800	---	1400
RCPTS 137N+137P	20	1	31	31	1200	1800	---
RCPTS 141,141A+141B	20	1	33	33	1200	---	2400
RCPT KITCHEN 139 REFRIG	20	1	35	35	800	---	2200
RCPTS KITCHEN 139	20	1	37	37	600	1400	---
RCPTS KITCHEN 139	20	1	39	39	400	---	1600
RCPTS KITCHEN 139 COPIER	20	1	41	41	1000	---	2000
TOTAL AMPS: 115.4		13658		15389		12502	
REMARKS:		TOTAL WATTS: 41549					

L1B		VOLTAGE: 120/208 PH & WIRES: 3P 4W BUSES: 200		MAIN BREAKER: 200A MAIN BRKR AIC RATING: 22K AIC MOUNTING: FLUSH		LOCATION: FINANCIAL SERV 136 FEEDER: 4#4/0#4G-2 1/2" C	
LOAD DESCRIPTION	AMP	W	PH	W	PH	W	PH
TUB 1 OF 1 - REMARKS:							
SYSTEMS FURNITURE	20	3	1	1	2400	1600	---
	-	-	-	3	---	1800	---
	-	-	-	5	---	1600	---
SYSTEMS FURNITURE	20	3	7	7	2400	1600	---
	-	-	-	9	---	1800	---
	-	-	-	11	---	1600	---
SYSTEMS FURNITURE	20	3	13	13	2400	1600	---
	-	-	-	15	---	1800	---
	-	-	-	17	---	1600	---
SYSTEMS FURNITURE	20	3	19	19	2400	1600	---
	-	-	-	21	---	1800	---
	-	-	-	23	---	1600	---
SYSTEMS FURNITURE	20	3	25	25	2400	1200	---
	-	-	-	27	---	1800	---
	-	-	-	29	---	1600	---
SYSTEMS FURNITURE	20	3	31	31	2400	1600	---
	-	-	-	33	---	1800	---
	-	-	-	35	---	800	0
SYSTEMS FURNITURE	20	3	37	37	2400	800	---
	-	-	-	39	---	800	---
	-	-	-	41	---	800	0
TOTAL AMPS: 83.3		10000		10400		9600	
REMARKS:		TOTAL WATTS: 30000					

Mark	Date	Description
--	07-09-15	75% REVIEW
--	07-23-15	100% REVIEW
--	08-03-15	OWNER REVIEW
--	08-10-15	ISSUED FOR BID



Drawing Scales
1/8" = 1'-0"

PA / PE: JWT
Drawn By: BSO

© 2015
Harriman Associates

**LUTHER BONNEY
FIRST FLOOR
POWER AND SYSTEMS**

E20.1