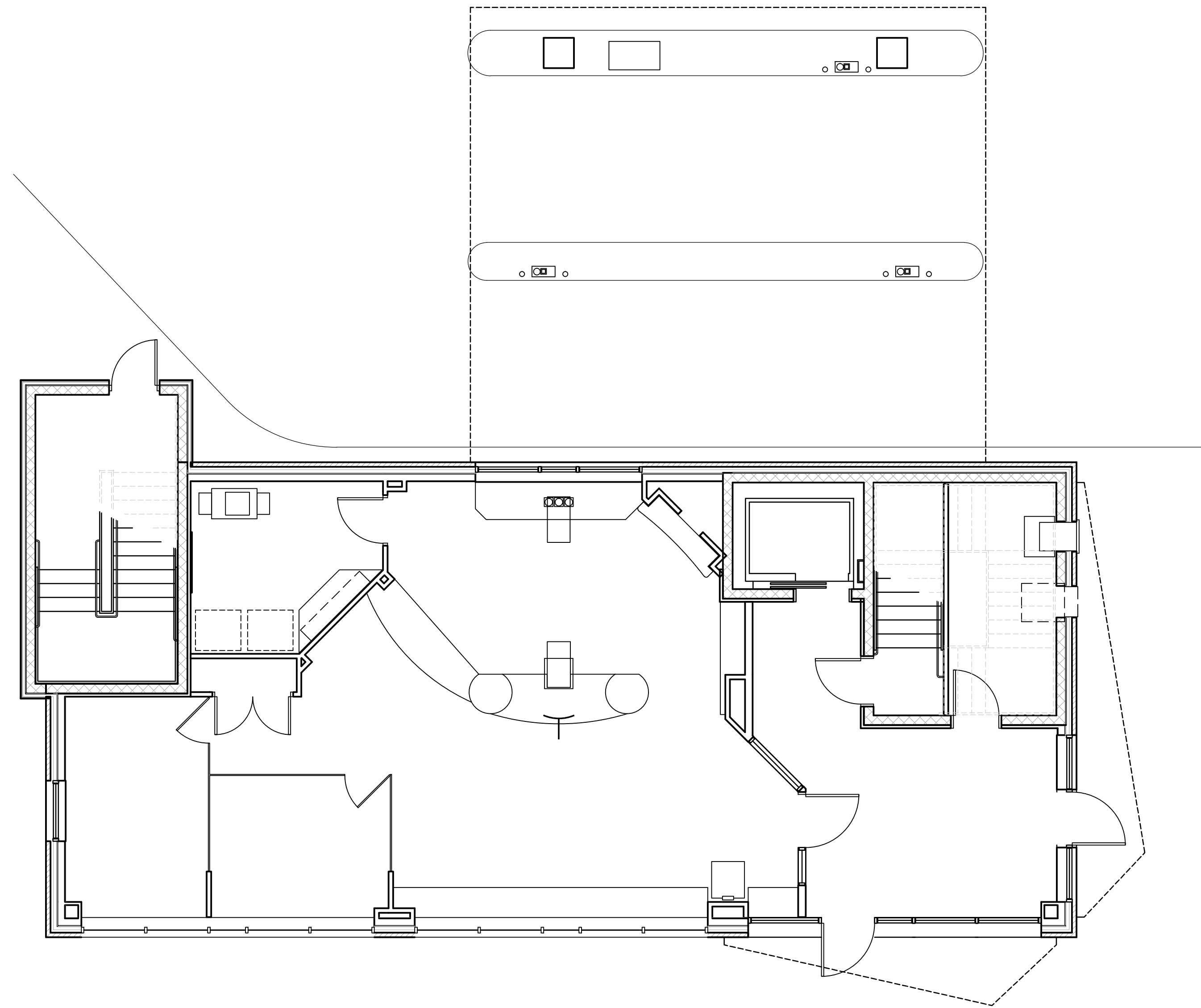


# BSB - MARGINAL WAY

PORTLAND, MAINE



## DRAWING INDEX

GI002 - CODE COMPLIANCE PLANS  
 GI003 - CODE REVIEW SUMMARY & NOTES  
 GI004 - CODE SUMMARY BUILDING ELEVATIONS & SITE PLAN

### CIVIL

C001 - COVER SHEET, GENERAL NOTES & LEGEND  
 C002 - EXISTING CONDITIONS PLAN  
 C101 - SITE & UTILITY PLAN  
 C102 - GRADING, DRAINAGE & EROSION CONTROL PLAN  
 C401 - DETAILS 1  
 C402 - DETAILS 2  
 C403 - DETAILS 3  
 L101 - LANDSCAPING PLAN

### STRUCTURAL

S1.0 - GENERAL NOTES  
 S1.1 - FOUNDATION PLAN  
 S1.2 - SECOND FLOOR FRAMING PLAN  
 S1.3 - THIRD FLOOR FRAMING PLAN  
 S1.4 - ROOF FRAMING PLAN  
 S1.5 - PENTHOUSE ROOF FRAMING PLAN

S2.1 - DETAILS  
 S2.2 - DETAILS  
 S2.3 - DETAILS

### ARCHITECTURAL

AE101 - FIRST FLOOR PLAN  
 AE102 - SECOND FLOOR PLAN  
 AE103 - THIRD FLOOR PLAN  
 AE104 - MECHANICAL PENTHOUSE PLAN  
 AE105 - ROOF PLAN  
 AE106 - FIRST FLOOR REFLECTED CEILING PLAN  
 AE107 - SECOND FLOOR REFLECTED CEILING PLAN  
 AE108 - THIRD FLOOR REFLECTED CEILING PLAN  
 AE109 - MECHANICAL PENTHOUSE REFLECTED CEILING PLAN

AE201 - EXTERIOR ELEVATIONS  
 AE202 - EXTERIOR ELEVATIONS  
 AE203 - EXTERIOR ELEVATIONS  
 AE204 - EXTERIOR ELEVATIONS  
 AE205 - INTERIOR ELEVATIONS  
 AE206 - CASEWORK ELEVATIONS

AE301 - BUILDING SECTIONS  
 AE302 - BUILDING SECTIONS  
 AE303 - WALL SECTIONS  
 AE304 - WALL SECTIONS

AE401 - ENLARGED STAIR AND ELEVATOR PLANS  
 AE402 - STAIR 1 - SECTIONS & DETAILS  
 AE403 - ENLARGED TOILET PLANS

AE501 - ROOF DETAILS  
 AE502 - PARTITION TYPES  
 AE503 - PLAN DETAILS  
 AE504 - WALL, WINDOW & DOOR DETAILS  
 AE505 - MISCELLANEOUS DETAILS

AE601 - DOOR AND WINDOW SCHEDULES  
 AE602 - ALUMINUM FRAME SCHEDULE

### INTERIORS

AF101 - FIRST FLOOR FINISH PLAN  
 AF102 - SECOND FLOOR FINISH PLAN  
 AF103 - THIRD FLOOR FINISH PLAN  
 AF104 - MECHANICAL PENTHOUSE FINISH PLAN  
 AF601 - FINISHES SCHEDULE & LEGEND

### PLUMBING

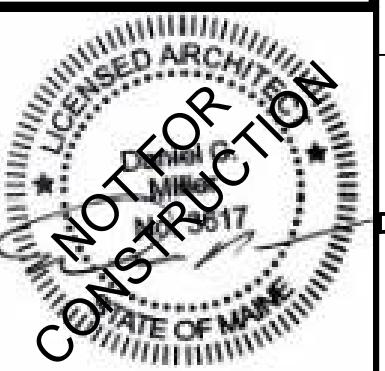
P101 - WASTE & VENT PLANS  
 P102 - HOT & COLD PLANS  
 P201 - SCHEDULES & DETAILS

### MECHANICAL

H101 - HVAC PIPING PLANS  
 H102 - HVAC DUCTWORK PLANS  
 H201 - HVAC SCHEDULES & DETAILS  
 H202 - HVAC DETAILS

### ELECTRICAL

E001 - SCHEDULES & DIAGRAMS  
 EL101 - ELECTRICAL LIGHTING PLANS  
 EP101 - ELECTRICAL POWER PLANS  
 EY101 - ELECTRICAL SYSTEMS PLANS  
 EY102 - ACCESS CONTROL & SECURITY PLANS  
 ES101 - ELECTRICAL SITE PLAN & DETAILS  
 ES01 - RISER DIAGRAMS  
 ES02 - LIGHTING DIAGRAMS & CONTROLS  
 ES03 - SYSTEMS DIAGRAMS  
 ES01 - PANEL SCHEDULES



ISSUED FOR CONSTRUCTION

07.22.15

NO.	DATE	DESCRIPTION
1	09.23.15	AS1 #003
0	03.31.15	SCHEMATIC DESIGN

COVER SHEET

GI001

**TAC**  
 Architectural  
 Group Inc.

**Structural Integrity**  
 Consulting Engineers, Inc.

**Hewett & Whitney**  
 ENGINEERS & DESIGNERS  
 Electrical & Mechanical Systems