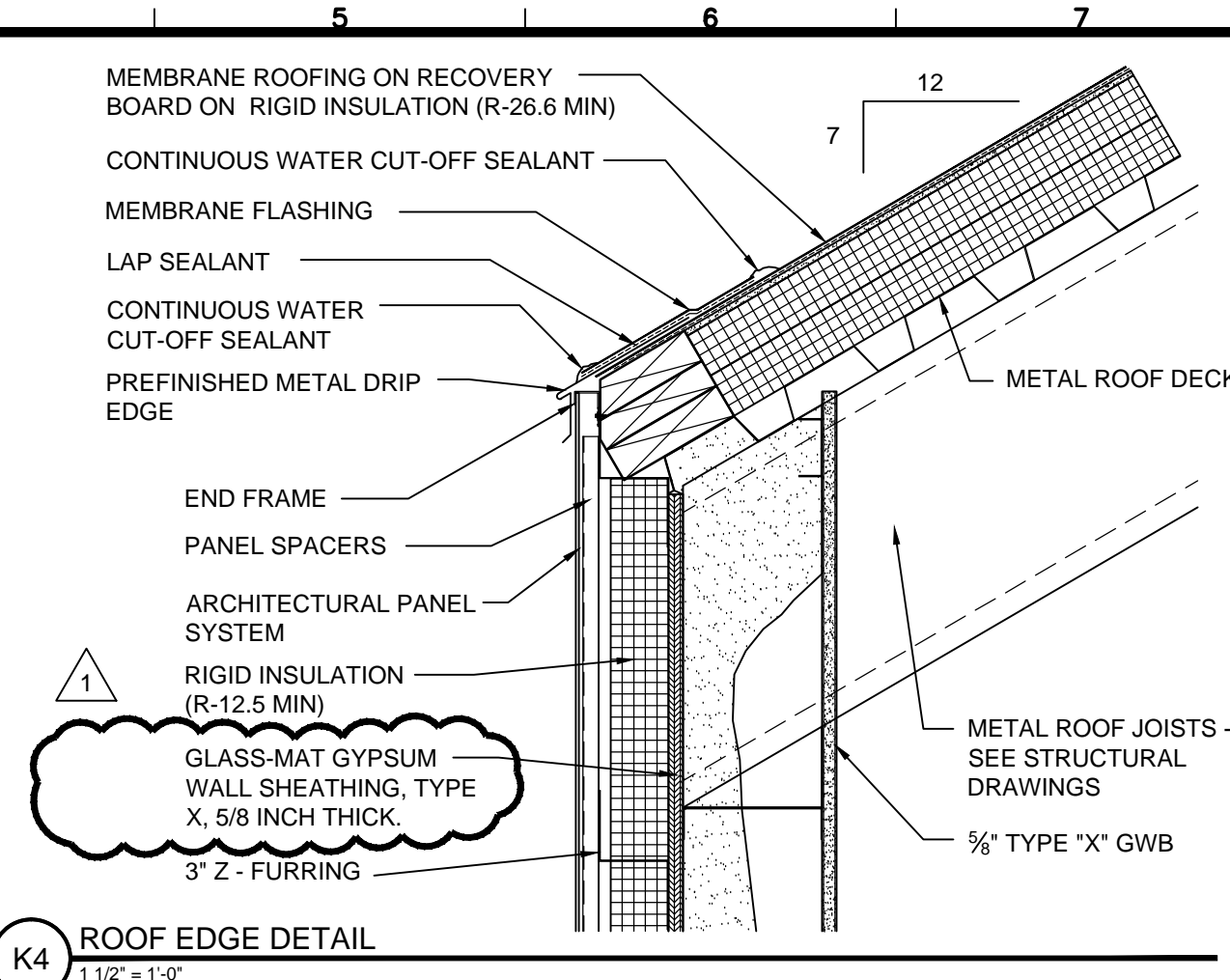
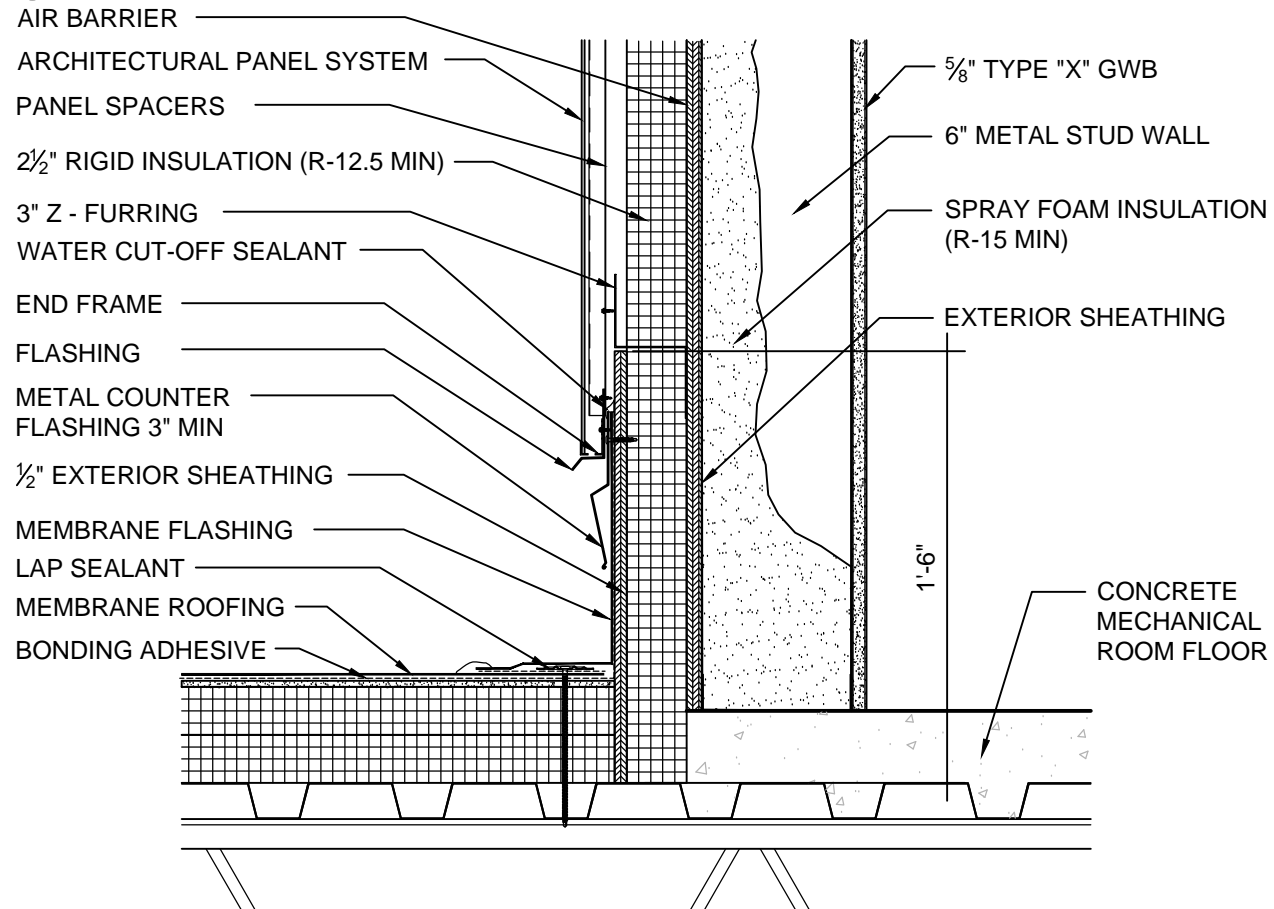


**K1** ROUND PENETRATION THRU ROOF DETAIL  
1 1/2" = 1'-0"

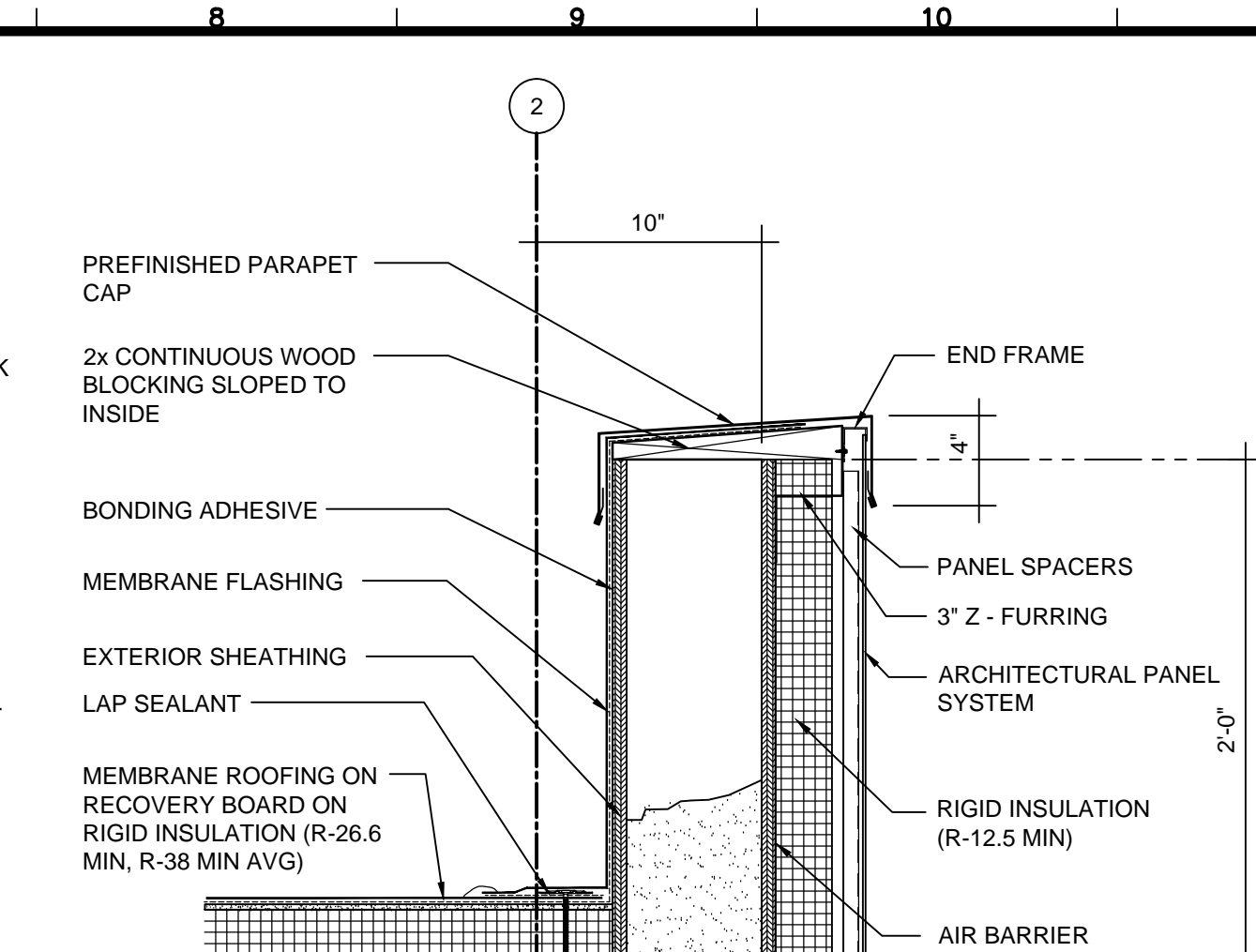
- NOTES:**
1. REFER TO MANUFACTURE WEBSITE FOR THE MOST CURRENT INFORMATION.
  2. PIPE MUST BE ANCHORED TO ENSURE STABILITY.
  3. PRE-MOLDED PIPE FLASHING MAY BE CUT TO HEIGHT, BUT NO LOWER THAN REINFORCING RING (NO WRINKLES OR FOLDS UNDER CLAMPING RING).
  4. APPLY SEALANT BETWEEN PENETRATION AND PRE-MOLDED PIPE FLASHING PRIOR TO INSTALLATION OF CLAMPING RING. REFER TO SEAM EDGE TREATMENT.
  5. LARGE PRE-MOLDED PIPE FLASHING FITS 4" - 8" PENETRATIONS SIZES.
  6. DO NOT USE WHEN SERVICE LINE TEMP. EXCEEDS 160°F.



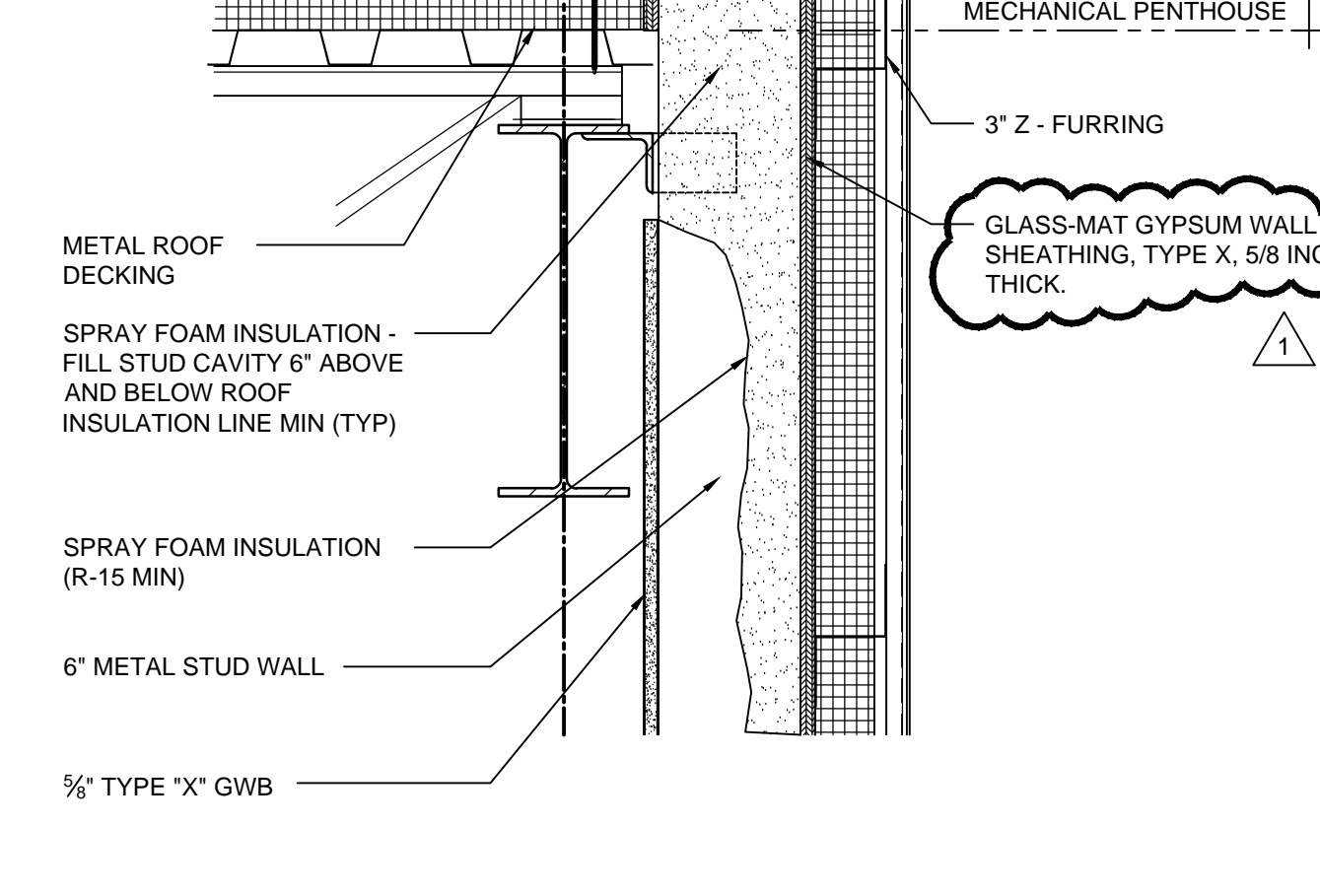
**K4** ROOF EDGE DETAIL  
1 1/2" = 1'-0"



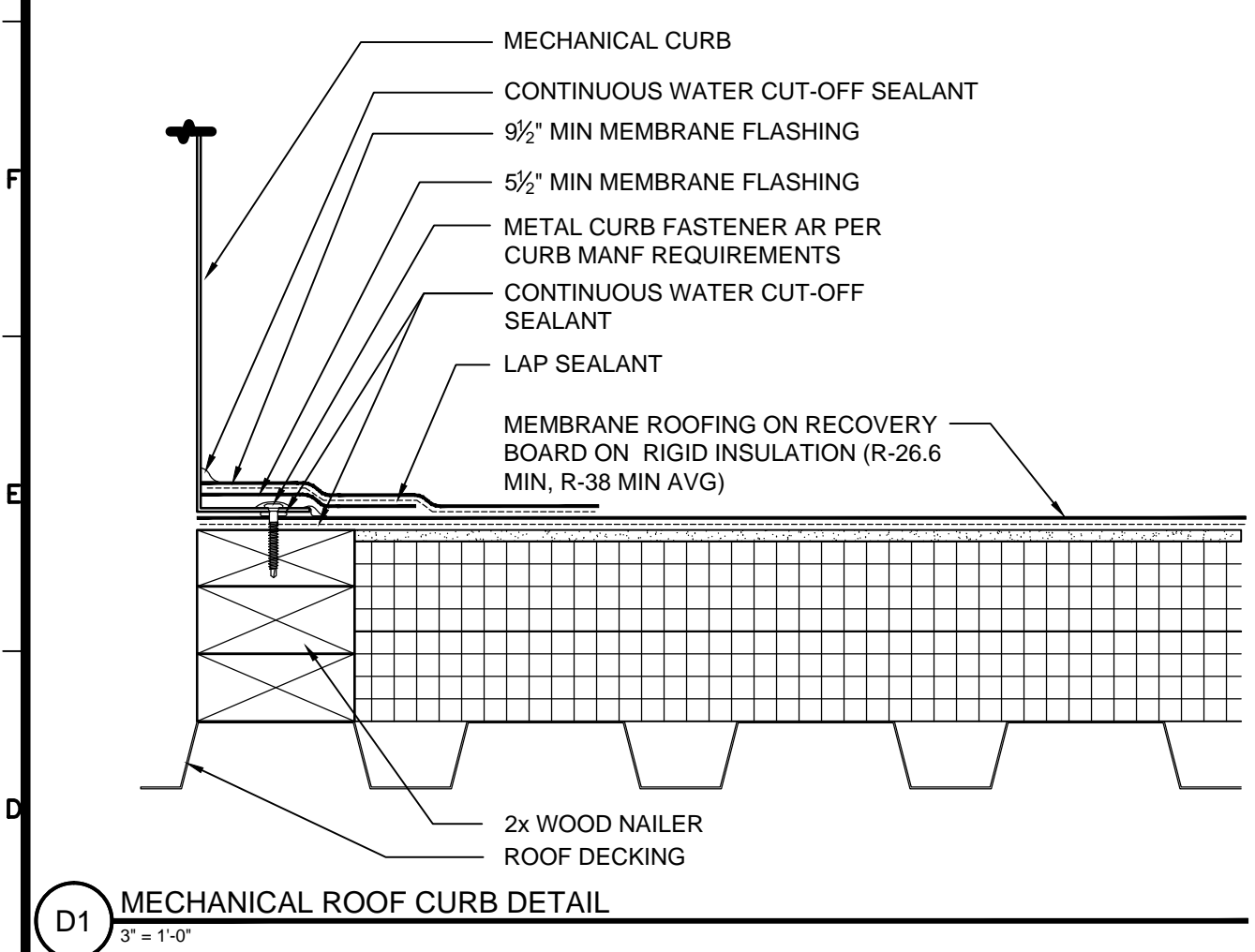
**G4** ROOF DETAIL  
1 1/2" = 1'-0"



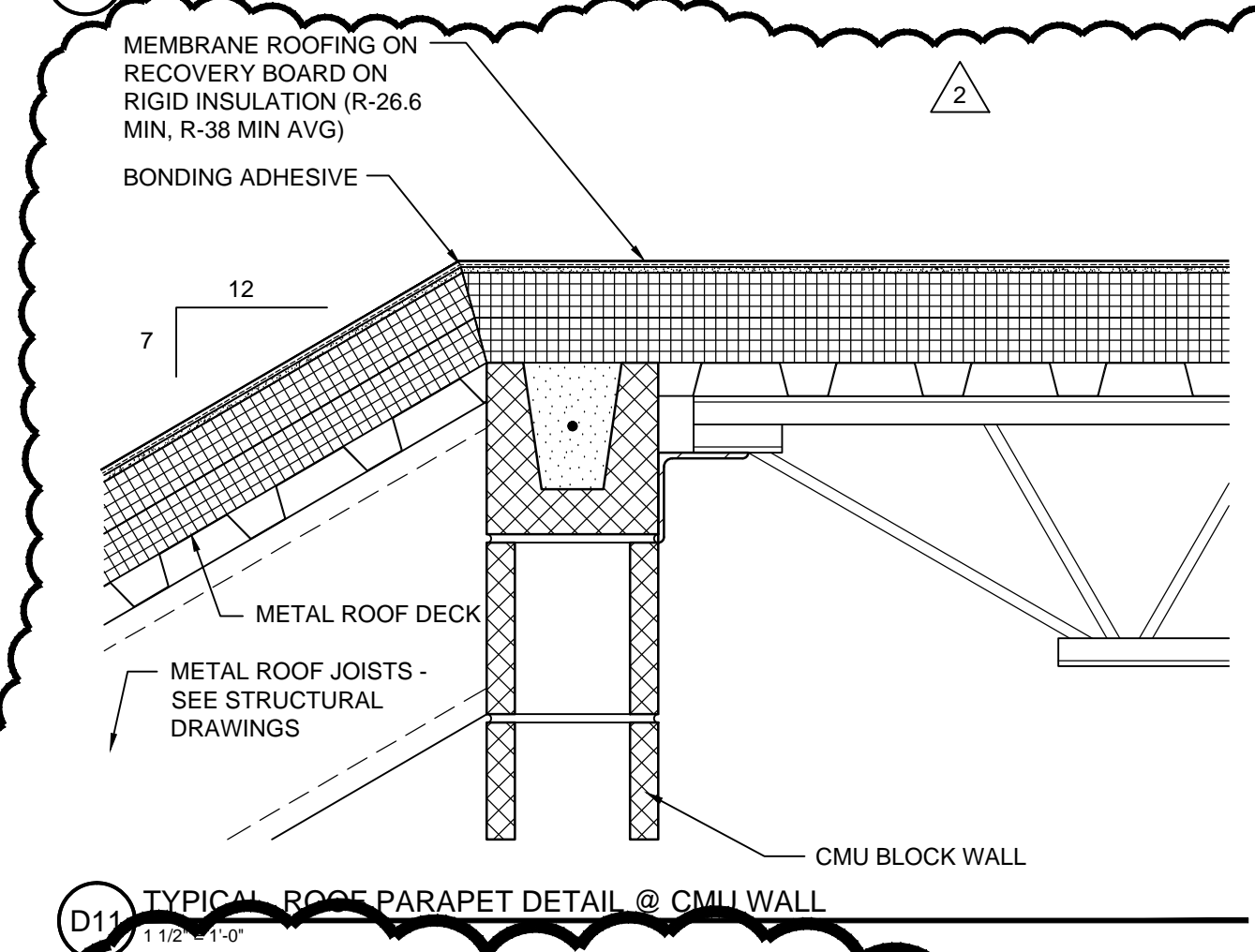
**G8** TYPICAL ROOF PARAPET DETAIL @ METAL STUD WALL  
1 1/2" = 1'-0"



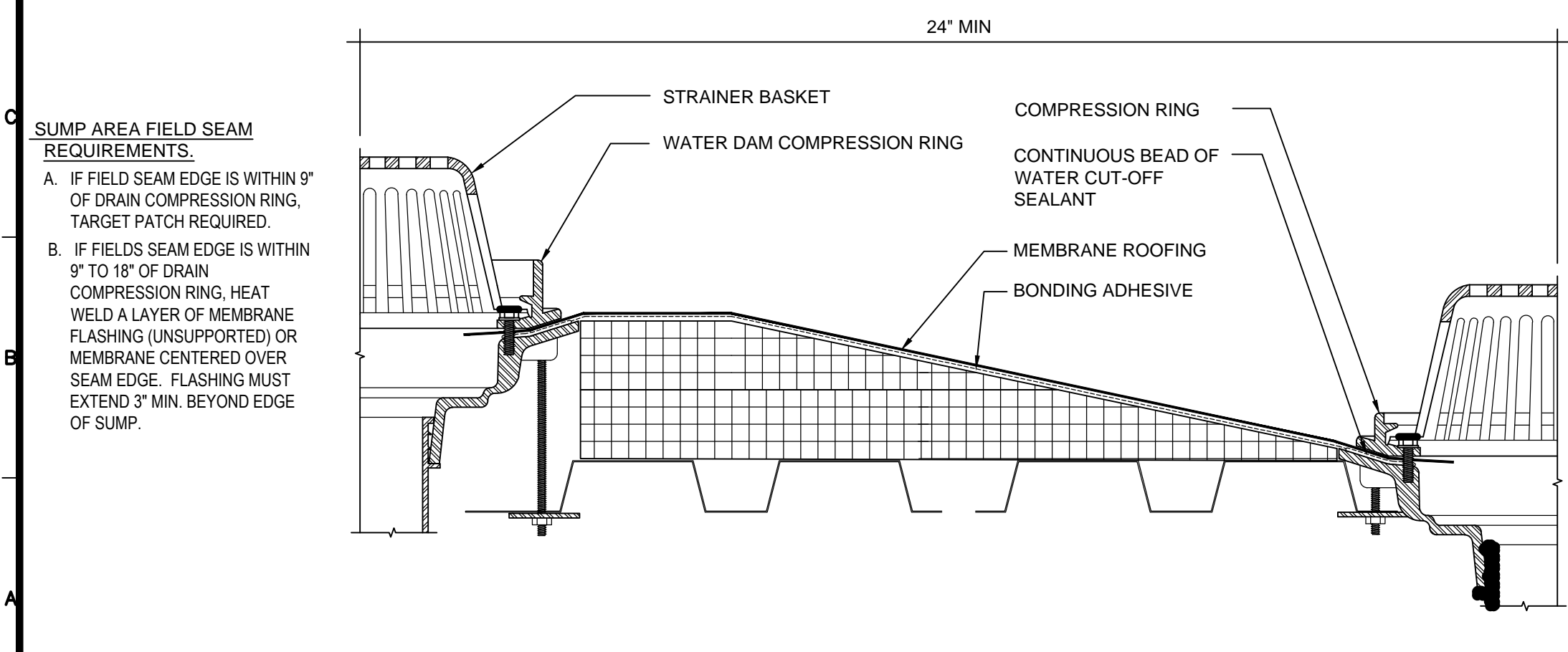
**G11** PATIO RAILING / ROOF PARAPET DETAIL  
1 1/2" = 1'-0"



**D1** MECHANICAL ROOF CURB DETAIL  
3" = 1'-0"



**D11** TYPICAL ROOF PARAPET DETAIL @ CMU WALL  
1 1/2" = 1'-0"

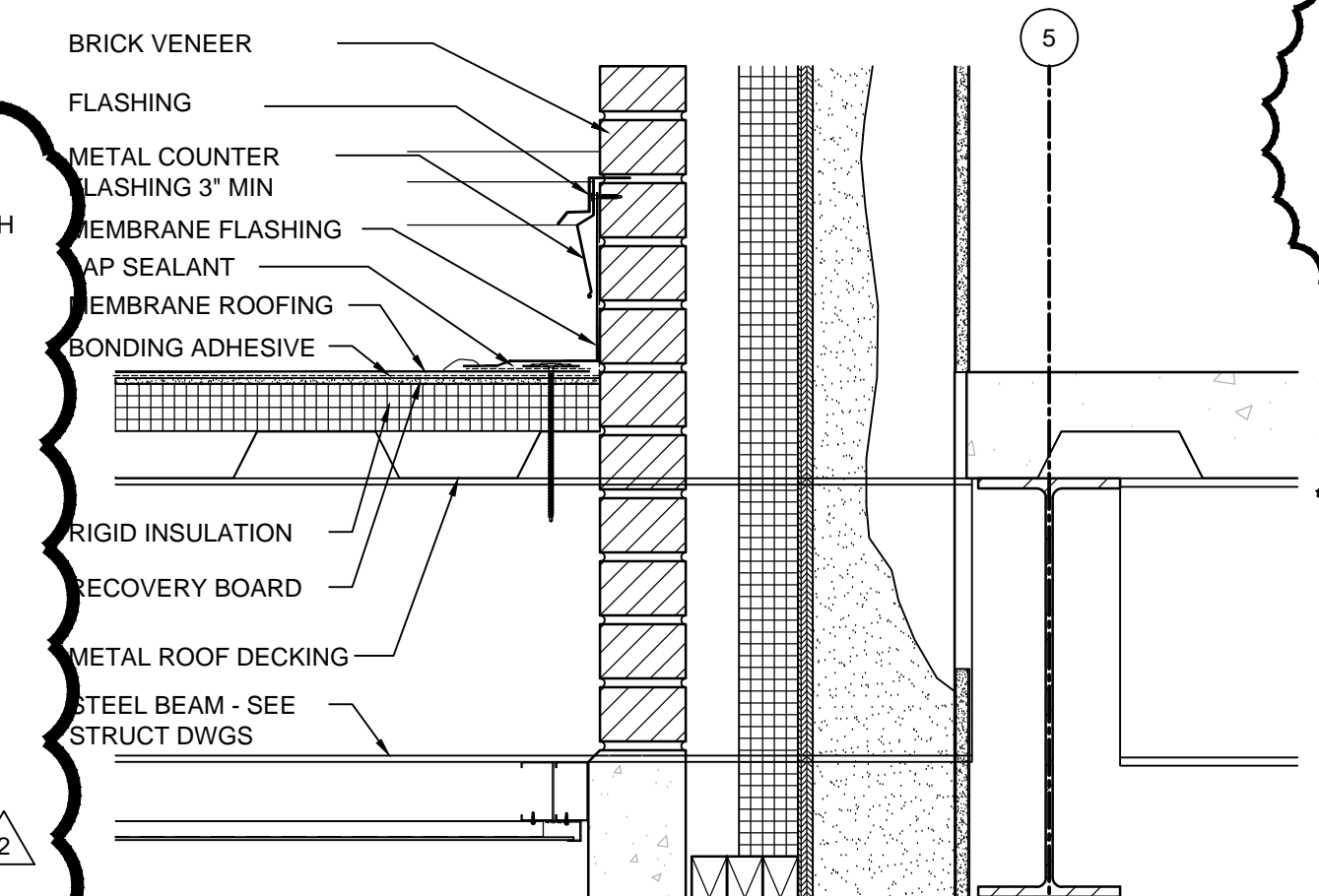


**A1** ROOF DRAIN WITH OVERFLOW DETAIL  
NTS

- NOTES:**
1. REFER TO MANUFACTURE'S WEBSITE FOR THE MOST CURRENT INFORMATION.
  2. HOLE IN MEMBRANE SHOULD EXTEND A MINIMUM OF 1/2" BEYOND CLAMPING RING AND SHOULD NOT BE SMALLER THAN THE DIAMETER OF THE LEADER PIPE.
  3. INSULATION ADJACENT TO DRAIN TO BE APPROPRIATE FIRESTONE INSULATION WITH APPROPRIATE BONDING SURFACE.
  4. WATER CUT-OFF SEALANT MIN 1/2 OF 10 OZ. TUBE PER 4' DRAIN. USE ADDITIONAL WATER CUT-OFF SEALANT FOR LARGER DRAINS.



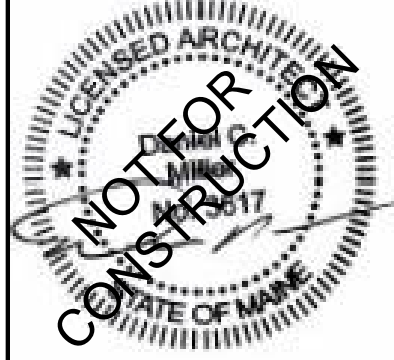
**A8** METAL COMPOSITE WALL PANEL  
NTS



**A11** ENTRY CANOPY DETAIL  
1 1/2" = 1'-0"

NO.	DATE	DESCRIPTION
2	09.22.15	ASI #003
1	06.01.15	ASI #002
0	03.31.15	SCHEMATIC DESIGN

ISSUED FOR CONSTRUCTION  
07.22.15



BSB - MARGINAL WAY  
PORTLAND, MAINE

PROJECT NO: 14-007  
CAD DWG FILE: AES01 ROOF DETAILS.DWG  
DRAWN BY: CRJ  
CHK'D BY: DCM  
COPYRIGHT: 2015

SHEET TITLE  
ROOF DETAILS

AE501