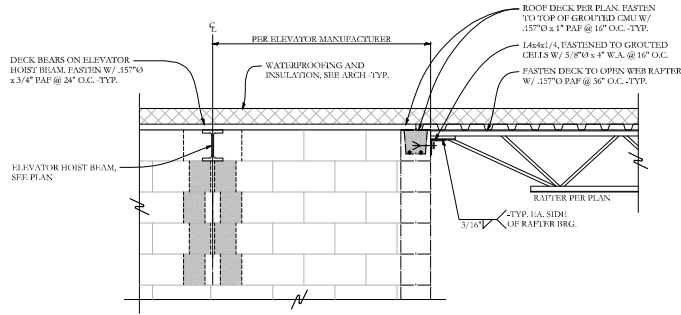
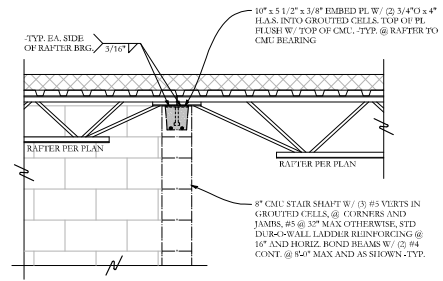


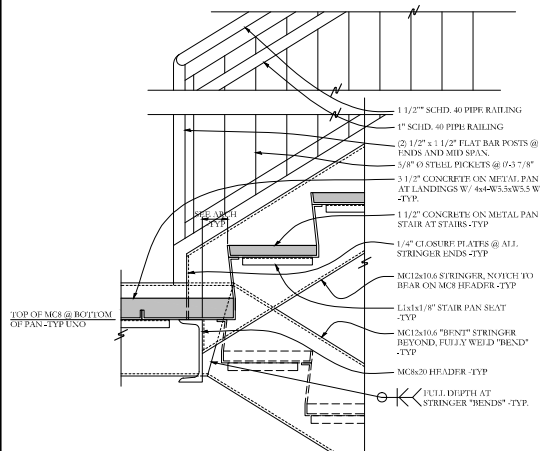
SECTION 1/S2.2 3/4"=1'-0"



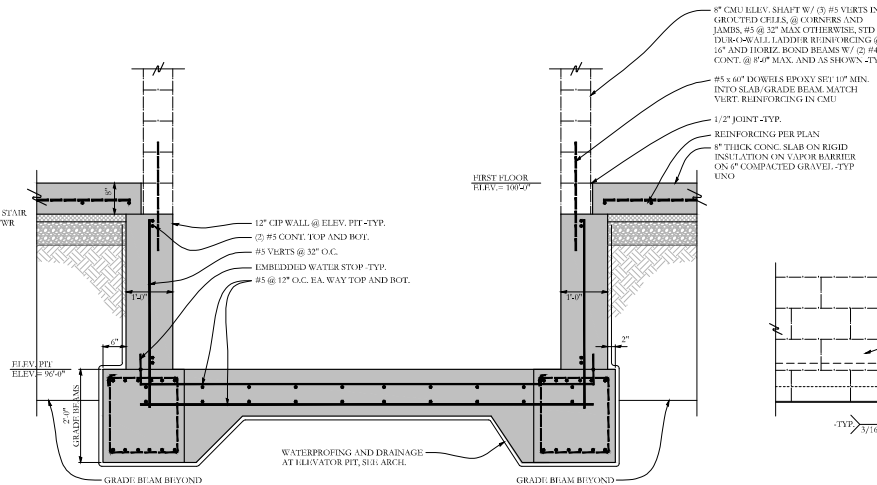
SECTION M/S2.2 1 1/2"=1'-0"



SECTION N/S2.2 1 1/2"=1'-0"

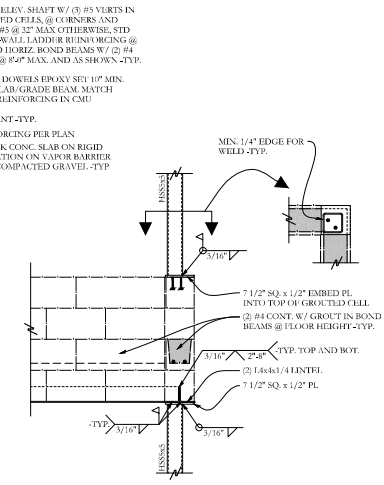


SECTION H/S2.2 1 1/2"=1'-0"
TYPICAL STAIR FRAMING



SECTION J/S2.2 3/4"=1'-0"

* VERIFY ALL DIMENSIONS W/ ARCH AND ELEVATOR SHOP DRAWINGS PRIOR TO START OF CONSTRUCTION



SECTION K/S2.2 3/4"=1'-0"

NO.	DATE	DESCRIPTION

ISSUED FOR CONSTRUCTION
07.22.15



BSB - MARGINAL WAY
PORTLAND, MAINE

PROJECT NO:	1502
CAD DWG FILE:	
DRAWN BY:	BDH
CHECK'D BY:	ACJ
COPYRIGHT:	2015

SHEET TITLE

DETAILS

S2.2

Structural Integrity
7 Oak Street
Portland, ME 04101
p 307-774-6444
f 866-793-2835
www.structuralintegrity.com
S/E 15-0065 BUILD WITH CONFIDENCE
©2015 Structural Integrity Group, Inc.