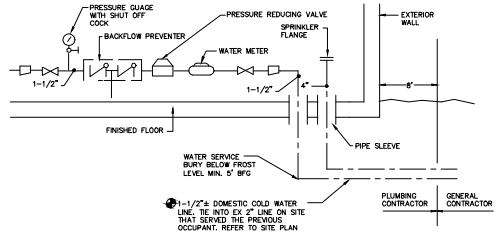
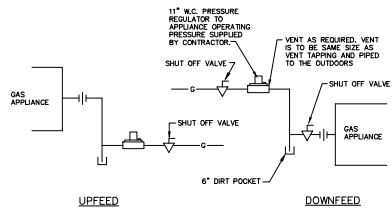


DHW HEATER HTR-1 DETAIL
NTS



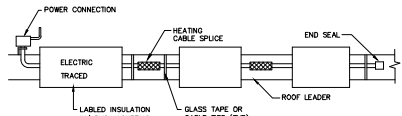
WATER SERVICE ENTRANCE DETAIL
NO SCALE

- NOTES:**
1. WATER METER TO BE PURCHASED FROM THE WATER COMPANY BY THE PLUMBING CONTRACTOR.
 2. WATER METER SPECIFICATIONS
SIZE: 3/4"
PEAK FLOW: 14 GPM
MAX. PRESSURE DROP (PSI): 6 PSI
MIN. INLET PRESSURE (PSI): 110 PSI
 3. BACKFLOW PREVENTER SPECIFICATIONS
TYPE: RPZ
SIZE: 3/4"
PRESSURE DROP: 15 PSI
 4. PRV SPECIFICATIONS
MODEL # 223B
SIZE: 3/4"
PRESSURE DROP: 7 PSI



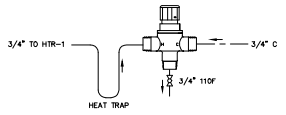
GAS PIPING DETAIL
NTS

- NOTES:**
1. PROVIDE UNIONS AND REDUCERS AT HEATERS/APPLIANCES.
 2. CONTRACTOR SHALL VERIFY ALL GAS PIPING REQUIREMENTS WITH THE BOILER MANUFACTURER PRIOR TO INSTALLATION.
 3. GAS PIPING TO BE LP INITIALLY AND CHANGED TO NATURAL WHEN IT BECOMES AVAILABLE ON-SITE.



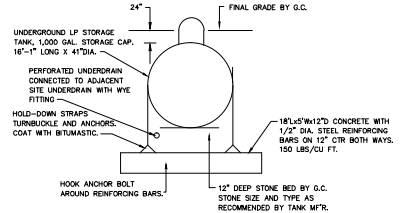
HEAT TRACING DETAIL
NTS

- NOTES:**
1. UNIT TO BE XL TRACE BY RAYCHEM OR EQUAL.
 2. THE INSULATION SHALL NOT BE INSTALLED WITH STAPLES.



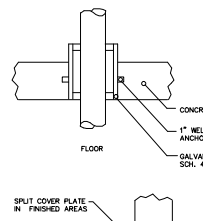
MIXING VALVE MV-1 DETAIL
NTS

- NOTES:**
1. MIXING VALVE, MV-1, LEONARD MODEL 370-LF WITH 20 PSI WPD AT 8 GPM HIGH-LOW TYPE WITH 3/4" INLETS AND 3/4" OUTLET.
 2. ASSE 1017, 1070 CERTIFIED.
 3. INSTALL IN ACCORDANCE WITH MANUFACTURER'S INSTRUCTIONS, OSHA AND AND 23061 TYP.
 4. REFER TO MANUFACTURER'S PIPING DIAGRAM FOR INSTALLATION.



UNDERGROUND LP TANK DETAIL
NTS

- NOTES:**
1. ALL EXCAVATION, BACKFILL AND CONCRETE TO BE BY G.C. TANK TO BE INSTALLED IN STRICT ACCORDANCE W/ MANUFACTURER'S INSTRUCTIONS AND RECOMMENDATIONS.
 2. PROVIDE TWO HOLD DOWN STRAPS PER TANK.
 3. ADJUST DEPTH AS REQUIRED IF INSTALLED IN TRAFFIC AREA.



PIPING SLEEVE DETAILS
NTS

- NOTES:**
1. PROVIDE 1/4" ANNULAR SPACE BETWEEN SLEEVE AND PIPE. PACK WITH OILUM AND SEAL OR CAULK ENDS.
 2. PROVIDE FRESTOPPING AT ALL FIRE RATED PENETRATIONS.

FIXTURE SCHEDULE						
UNIT	DESCRIPTION	MIN. LINE SIZE (IN)				NOTES
		W	V	H	G	
P-1A	ADA TANK WC	4	2	-	1/2	- 1
P-1B	TANK WC	4	2	-	1/2	- 1
P-2A	ADA WALL LAVATORY	1-1/4	1-1/4	1/2	1/2	- 1
P-2B	SOP SINK	3	1-1/2	1/2	1/2	- 1
P-3B	ADA SINGLE SINK	2	1-1/2	1/2	1/2	- 2
P-4A	ADA DUPLEX COOLER	1-1/4	1-1/4	-	1/2	- 1
P-5A	ADA WALL URINAL	2	1-1/2	-	3/4	-
NFM	NONFREEZE WALL HYDRANT	-	-	-	3/4	- 1
FD-A	FLOOR DRAIN	3	1-1/2	-	-	- 2
FD-B	FLOOR DRAIN	3	1-1/2	-	-	- 2

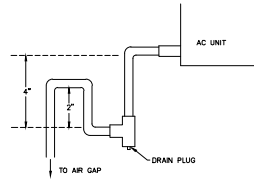
- NOTES:**
1. PROVIDE SHUT OFF VALVES IN H & C LINES TO ALL FIXTURES/APPLIANCES
 2. PROVIDE TRAP PRIMER

PUMP SCHEDULE (P)											
UNIT	LOC.	SYS.	MODEL	TYPE	GPM		HP	POWER	NOTES		
					BY PUMP	(FT)					
PP-1	ELE PIT	SUMP	SE-50	SUB	1	74	37	1/2	3600	115	1

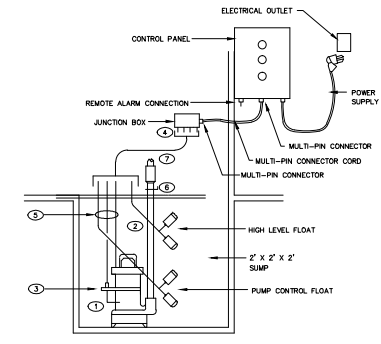
- NOTES:**
1. BASED ON STANCON

DHW HEATER (HTR)								
UNIT	LOC.	INPUT (MBH)	RECVY (GPH)	FUEL	MODEL #	STOR (GAL)	POWER	NOTES
HTR-1	15.3	51-88	ELECT	SPX-500HPT	50	4.5	240/1	1,2

- NOTES:**
1. BASED ON STATE WATER HEATERS HYBRID ELECTRIC HEAT PUMP WATER HEATERS.
 2. ALL UNITS WITH 4500V ELEMENTS HAVE UPPER AND LOWER ELEMENTS WITH NON-SIMULTANEOUS OPERATION.
 3. PROVIDE DUCT ADAPTOR KIT



CONDENSATE TRAP DETAIL
NTS



ELEVATOR PIT SUMP PUMP DETAIL
NTS

- SUMP PUMP NOTES:**
1. SUBMERSIBLE PUMP WITH 2" DISCHARGE
 2. CHECK VALVE
 3. OIL MINDER PROBE
 4. JUNCTION BOX WITH MULTI-PIN CONNECTOR AND CORD (25')
 5. POWER CABLE, PROBE CABLE AND FLOAT CABLE
 6. CAMLOCK QUICK DISCONNECT
 7. PROVIDE A DEEP SEAL "P" TRAP, SMITH 72201, WITH FUNNEL INTAKE AND TRAP PRIMER TO RECEIVE SUMP DISCHARGE THROUGH AN AIR GAP OR DISCHARGE INTO NEAREST JANITORS CLOSET.

PLUMBING LEGEND

- X- SANITARY SOIL OR WASTE - ABOVE FLOOR
- - - - - SANITARY SOIL OR WASTE - UNDER FLOOR
- VENT
- RL --- ROOF LEADER
- RL --- UNDERFLOOR ROOF LEADER
- 110" --- 110" HOT WATER LINE
- 110R --- 110" HOT WATER RECIRCULATION LINE
- 140 --- 140" HOT WATER LINE
- 140R --- 140" HOT WATER RECIRCULATION LINE
- 160 --- 160" HOT WATER LINE
- 160R --- 160" HOT WATER RECIRCULATION LINE
- CD --- CONDENSATE DRAIN
- X- GR --- UNDERFLOOR GREASE WASTE
- - - - - COLD WATER
- - - - - GAS LINE
- 3"/1" --- PIPE SIZE / SLOPE PER FOOT
- --- PIPE RISER
- --- PIPE DROP
- --- UNDN
- --- GATE VALVE
- --- CHECK VALVE
- --- BALL VALVE
- --- BALANCING VALVE (BV)
- --- GAS PLUG VALVE
- --- PUMP
- --- THERMOMETER/THERMOWELL
- --- PRESSURE GAUGE WITH SHUT-OFF COCK
- --- SPRINKLER
- --- SPVIL --- PRESSURE RELIEF VALVE
- --- FD --- FLOOR DRAIN
- --- HOSE BIBB (HB)
- --- NON-FREEZE WALL HYDRANT (NFMH)
- --- TE INTO EXISTING SYSTEM
- --- EXISTING EQUIPMENT TO BE REMOVED
- --- ABOVE FINISHED FLOOR
- --- ABOVE FINISHED GRADE
- --- CD --- CONDENSATE DRAIN
- --- CLEANOUT
- --- EX --- EXISTING EQUIPMENT
- --- FCO --- FLOOR CLEANOUT
- --- FE --- FIRE EXTINGUISHER - WEIGHT (LB)
- --- H & C --- HOT AND COLD
- --- INV --- INVERT ELEVATION
- --- NC --- NOT IN CONTRACT
- --- NTS --- NOT TO SCALE
- --- SA --- SHOCK ABSORBER
- --- VTR --- VENT THROUGH ROOF
- --- W & V --- WASTE AND VENT
- --- WCO --- WALL CLEANOUT



ISSUE FOR CONSTRUCTION
07.22.15



BSB - MARGINAL WAY
PORTLAND, MAINE

PROJECT NO: 1502
CAD DWG FILE: Plumb-SchedulesDetails.dwg
DRAWN BY: GRL/KWW
CHK'D BY: KWW
COPYRIGHT: 2015

SCHEDULES & DETAILS

P201