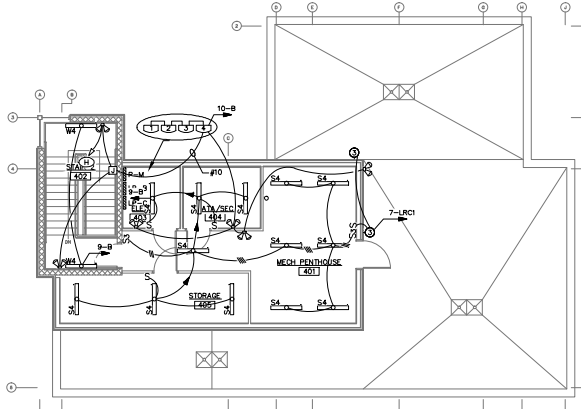


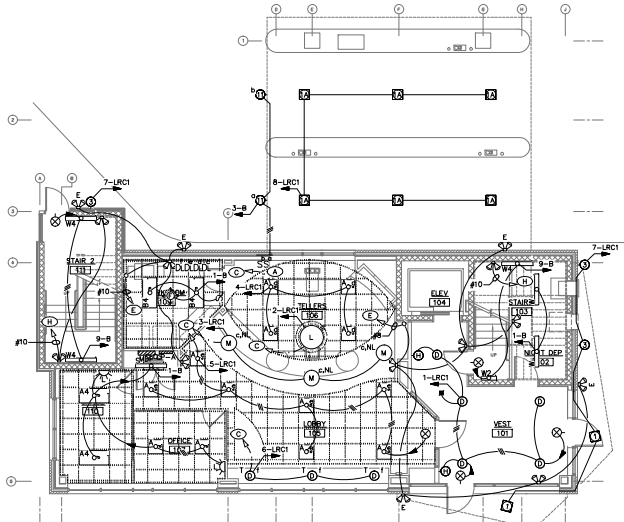
**THIRD FLOOR PLAN**  
SCALE: 1/8" = 1'-0"



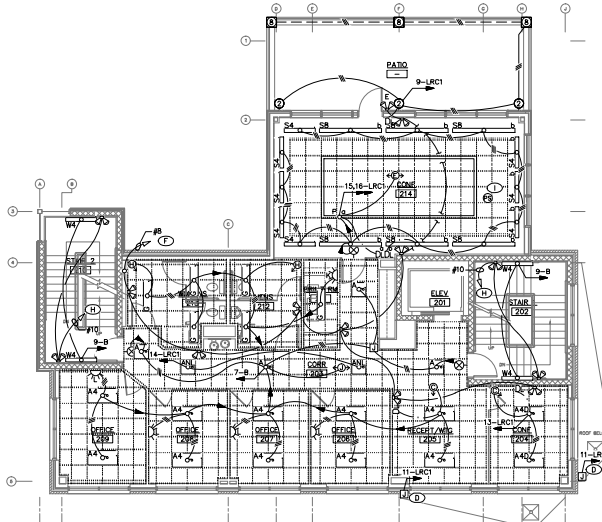
**MECHANICAL PENTHOUSE PLAN**  
SCALE: 1/8" = 1'-0"

- KEYED NOTES**
- ① SIGN SWITCHES BY SECURITY VENDOR, EC TO INSTALL.
  - ② FIELD ADJUST LOCATION OF LIGHT FIXTURE AND SWITCH PER ELEVATOR MANUFACTURER'S RECOMMENDATIONS.
  - ③ TO DIMMER SWITCH IN WORKROOM 109.
  - ④ VERIFY LOCATION(S) AND POWER REQUIREMENTS FOR BUILDING MOUNTED SIGNS PRIOR TO ROUGH-IN. COORDINATE WITH SIGN INSTALLER.
  - ⑤ TO BATTERY UNIT #1 IN MECHANICAL PENTHOUSE.
  - ⑥ TO BATTERY UNIT #2 IN MECHANICAL PENTHOUSE.
  - ⑦ TO BATTERY UNIT #3 IN MECHANICAL PENTHOUSE.
  - ⑧ TO NEXT FUTURE.
  - ⑨ PROVIDE CORRECT QUANTITY AND LOCATE PHOTO SENSORS FOR MANUFACTURER'S RECOMMENDATIONS.

PROVIDE CLEAR LABELS WITH BLACK LETTERING INDICATING CIRCUIT/PANEL ON ALL SWITCH PLATES.




**FIRST FLOOR PLAN**  
SCALE: 1/8" = 1'-0"



**SECOND FLOOR PLAN**  
SCALE: 1/8" = 1'-0"





1" = 0' 4" 8" 16"  
SCALE: 1/8" = 1'-0"



**Hewlett & Whitney**  
ENGINEERS & DESIGNERS  
MECHANICAL & ELECTRICAL DIVISION  
161 MAIN STREET WINTHROP, MAINE  
Tel 207.637.9900 Fax 207.637.9504  
PLOT DATE: Jul 21, 2015

NO.	DATE	DESCRIPTION
<b>ISSUE FOR CONSTRUCTION</b>		
07.22.15		





**BSB - MARGINAL WAY**

PORTLAND, MAINE

PROJECT NO: 1502  
CAD DWG FILE: Elec-Plans.dwg  
DRAWN BY: ELP/COH  
CHK'D BY: COH  
COPYRIGHT: 2015

ELECTRICAL LIGHTING PLANS

EL 101