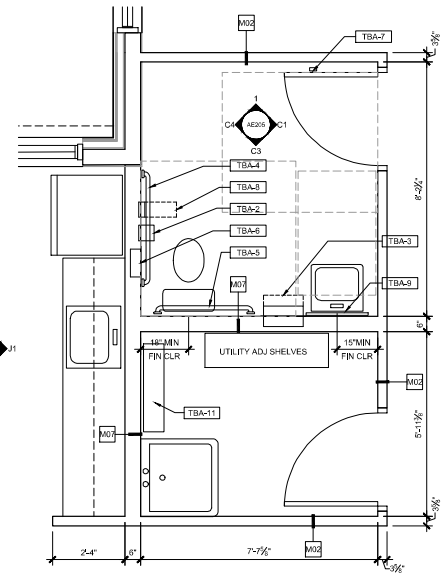
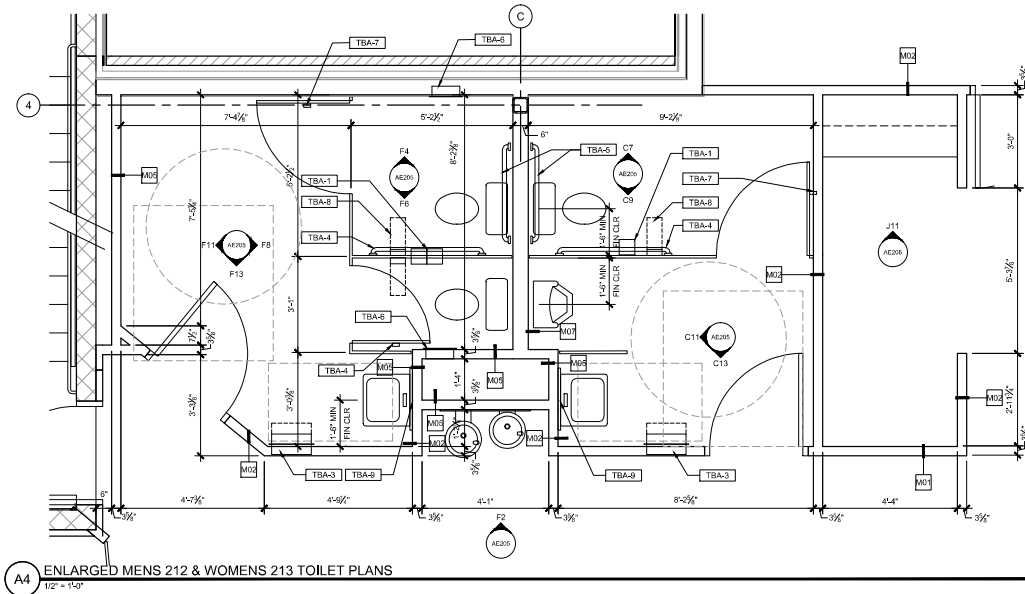


F1 ENLARGED TELLER CASEWORK PLAN  
1/2" = 1'-0"



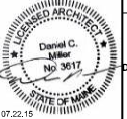
F11 ENLARGED TOILET 313 PLAN  
1/2" = 1'-0"



A4 ENLARGED MENS 212 & WOMENS 213 TOILET PLANS  
1/2" = 1'-0"

0 03.31.15 SCHEMATIC DESIGN  
NO. DATE DESCRIPTION

ISSUED FOR CONSTRUCTION  
07.22.15



BSB - MARGINAL WAY  
PORTLAND, MAINE

PROJECT NO: 14-007  
CAD DWG FILE: AE403 ENLARGED TOILET PLANS.DWG  
DRAWN BY: CRJ  
CHK'D BY: DCW  
COPYRIGHT: 2015

SHEET TITLE  
ENLARGED TOILET PLANS

AE403